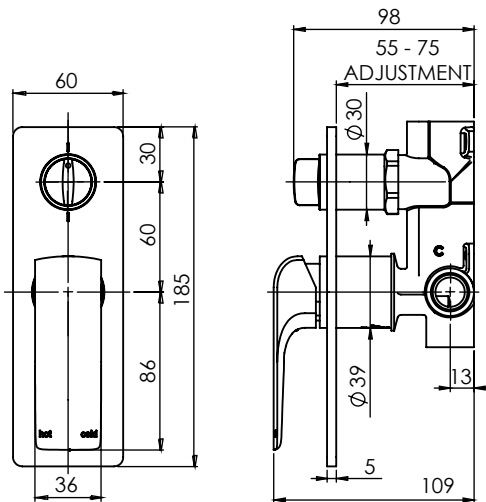


MILLI GLANCE

DIVERTER MIXER



SPECIFICATIONS

Recommended Use	Domestic, hotel and commercial
Finish Available	Chrome Matte Black Rose Gold Brushed Nickel Gun Metal
Pressure Rating	Maximum continuous operating pressure 500 kPa. Note: For best performance and longer life, we recommend 150-500 kPa.
Temperature Rating	Maximum continuous working temperature 75°C
Suitable Hot Water	Storage Tank: Yes Continuous Flow: Refer to manufacturer of continuous hot water systems Gravity Feed: No
Standards	AS/NZS 3718



To see the complete MILLI GLANCE range go to www.reece.com.au/bathrooms

CLEANING RECOMMENDATIONS

We recommend the use of soapy water or approved cleaners. This product should not be cleaned with abrasive materials. Damage caused by any improper treatment is not covered by the product warranty- refer to Warranty Conditions.

INSTALLATION INSTRUCTIONS

Important Note

Mixer must be installed to the requirements of AS/NZS 3500 by a qualified plumber. Your mixer comes to you already factory assembled and tested. We do not recommend the dismantling of any internal part of the mixer. The mixers are factory tested and sealed so as to give the best performance.

Wall Mixer With Rotary Diverter Installation Instructions

WATER SUPPLY REQUIREMENTS	Set Up	Water Connection	Diverter Operation	Diverter Replacement
<p>Recommended Working Pressure: 150 kPa Min. - 550 kPa Max.</p> <p>Maximum hot water temperature: 75°C</p> <p>Note:</p> <ul style="list-style-type: none"> - If the pressure exceeds or is likely to exceed 550kpa, an approved pressure limiting device must be installed. - Flush out all pipe work prior to installation. - If the water temperature exceeds 75°C, an approved tempering valve must be fitted. - Installation should comply with Australian standard AS3500.1 or relevant local authority requirements. - Showers may not be suitable for use with gravity-fed water heaters, low-pressure supply networks or some instantaneous water heaters. - NOTE: Some showers with nominal flow rates of less than 7.5l/min may not provide an effective shower when used with gravity-fed water heaters, low-pressure supply networks or some instantaneous water heaters. <p>Failure to comply with the above may void all warranties.</p> <p>While we aim to ensure the specifications shown are correct at time of printing, we reserve the right to make modifications without prior notice. Always use the physical product measurements for mark-ups and roughing-in as the line drawing shown may differ from the actual product over time.</p> <p>Maintenance and Care</p> <ul style="list-style-type: none"> - Chrome plated surfaces should be cleaned with mild liquid detergent or soap and water. - Do not use cream cleaners or citrus based cleaning products, as they are abrasive. - Use of unsuitable cleaning agents may damage the surface. Any damage caused in this way will not be covered by warranty. 				<div style="display: flex; flex-direction: column; align-items: center;"> <p>Remove the diverter shroud with a 34mm tube spanner.</p> <p>Remove the plastic spacer. Release grub screws.</p> <p>Remove the diverter button. Release the adaptor.</p> <p>Remove the diverter cartridge with a 21mm tube spanner.</p> </div> <div style="display: flex; flex-direction: column; align-items: center; margin-top: 10px;"> <p>Install the diverter shroud with a 34mm tube spanner, push the dress plate back to position.</p> <p>Fasten grub screws and fit the plastic spacer to position.</p> <p>Fasten the screw to secure Spindle Adaptor on the spindle. Turn spindle Anti-Clockwise until it stops. Push on Diverter Button.</p> <p>Fasten New Diverter Cartridge with the tube spanner.</p> </div>
<p>1: Screw the diverter mixer assembly in place. Attach water supplies. TEST & CHECK FOR LEAKS Do not remove Protective Cover until final fit-off.</p> <p>IN0131_revD</p>	<p>2: Create a 45mm hole and a 50mm hole in cement sheet and tiles, as shown.</p>	<p>3: Ensure that "O" rings are fitted in Dress Plate. Remove the protective covers. Push on Dress Plate.</p>	<p>4: Push on the mixer handle.</p>	<p>5: Fasten the grub screw firmly.</p>