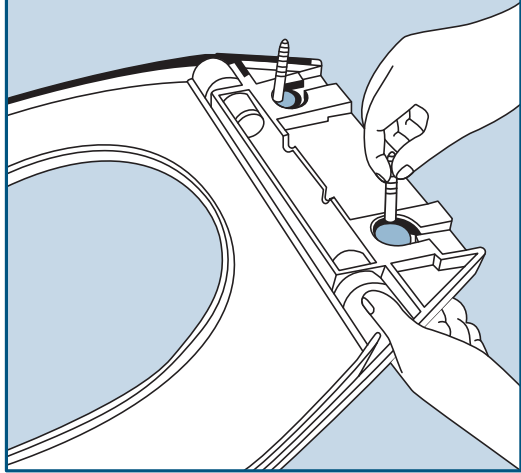
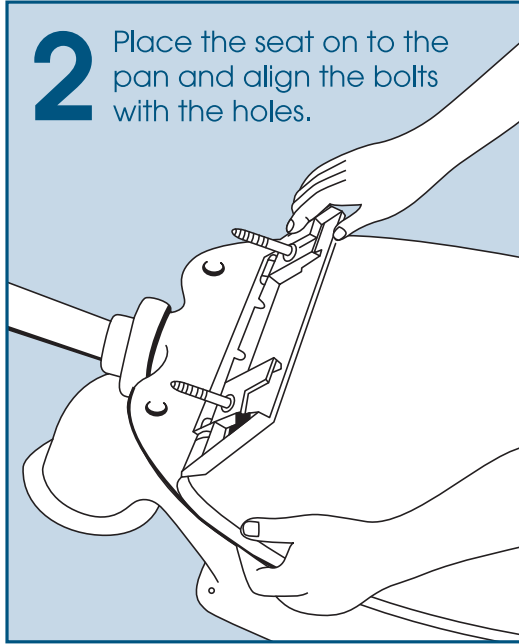


INSTALLATION INSTRUCTIONS

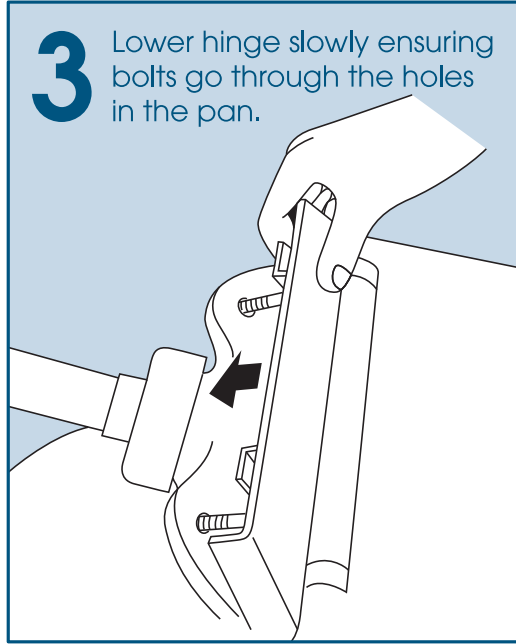
- 1** Insert the bolt heads into the slots provided under the hinge plate.



- 2** Place the seat on to the pan and align the bolts with the holes.



- 3** Lower hinge slowly ensuring bolts go through the holes in the pan.



- 4** Secure the seat by tightening nuts underneath finger tight.

