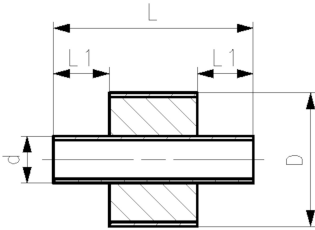


COOL-FIT 4.0 Barrel nipple

Model:

- Pre-insulated PE100 SDR11/17 metric
- Insulation made from GF HE foam
- Impact resistant Colour: black
- For short connections between COOL-FIT 4.0 Fittings Typ A

*d32/90 - d110/180 available from Q4 2018



	d/D (mm)	PN (bar)	SDR	Code	Weight (kg)	L1 (mm)	z (mm)	closest inch (inch)
*	32/90	16	11	738 913 408	0.126	36	151	1
*	40/110	16	11	738 913 409	0.188	40	155	1 ¼
*	50/110	16	11	738 913 410	0.226	44	163	1 ½
*	63/125	16	11	738 913 411	0.328	48	171	2
*	75/140	16	11	738 913 412	0.447	55	185	2 ½
*	90/160	16	11	738 913 413	0.631	62	199	3
*	110/180	16	11	738 913 414	0.929	72	219	4
	160/250	10	17	738 913 417	1.576	90	255	6
	225/315	10	17	738 913 420	3.254	110	295	8

The technical data are not binding. They neither constitute expressly warranted characteristics nor guaranteed properties nor a guaranteed durability. They are subject to modification. Our General Terms of Sale apply.

Georg Fischer Piping Systems Ltd, Postfach, CH-8201 Schaffhausen/Switzerland

Phone +41 -(0)52-631 1111

e-mail: info.ps@georgfischer.com

Internet: <http://www.gfps.com>