

Grandeur Hand Wash Basin



HBGU

Scan QR code
to view our
installation notes



Product Info:

- Highly vandal resistant
- Radius safety fascia
- Concealed plumbing & wall fixings
- 1, 2 or 3 tap holes
- Front and rear fixed models
- 40mm waste supplied
- Suits P trap installation
- Optional tapware (see Tapware: Section 11)

To order this item please advise:

- Fixing method: front or rear
- Waste type: standard or anti-ligature
- Tapware and tap hole details (if required)

Suggested Tapware:

(see Tapware Section: 11 for complete range of options)



TW-SEC-01
Security Tap Set
(Cold Only)



TW-SEC-06
Security 3/4 Turn Basin Set
(Hot & Cold)



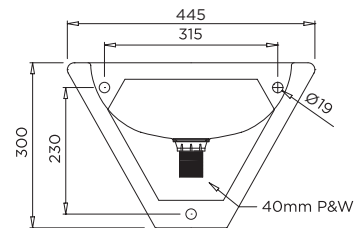
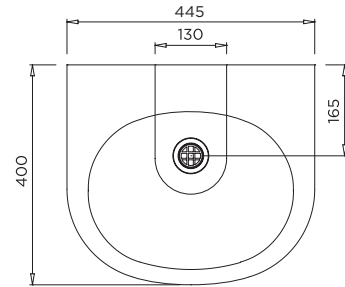
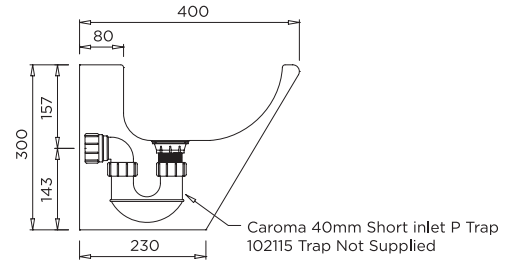
TW-9201
Deluxe Timed Flow
Pillar Tap



TW-9102
Eco Timed Flow
Pillar Tap

INSTALLATION NOTES

1) Fixture strength is ultimately determined by the load capacity of the supporting structure (noggins recommended for stud walls) and use of appropriate fixings. 2) Basin is secured to wall via three integrated fixing holes (19mm dia.) Suggested additional fixings are three threaded rods with nuts and washers (not supplied). 3) An offset bracket is supplied to provide additional support to basin at rear. 4) Front fixed model is supplied with a side access panel. 5) Rear fixed model supplied without access panel. 6) A 'short trap' is required to fit within the basin shroud.



To suit Caroma 40mm Short inlet P Trap
102115 Trap Not Supplied