

## D-TDW-A

Scan QR code  
to view our  
installation notes

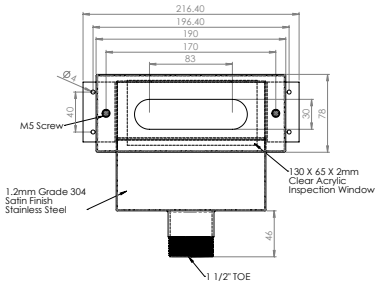
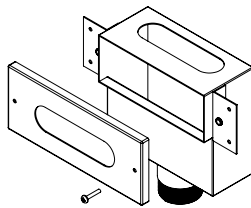
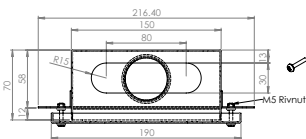


To order this item please advise:

- Model: D-TDW-A, D-TDW-B or custom
- Custom design requirements
- Grade of stainless: 304 or 316

### Product Info:

- Removable inspection window
- Standard and custom designs available
- Purpose built to specific applications
- Grade 304 or 316 stainless steel
- Quality components provides optimal durability



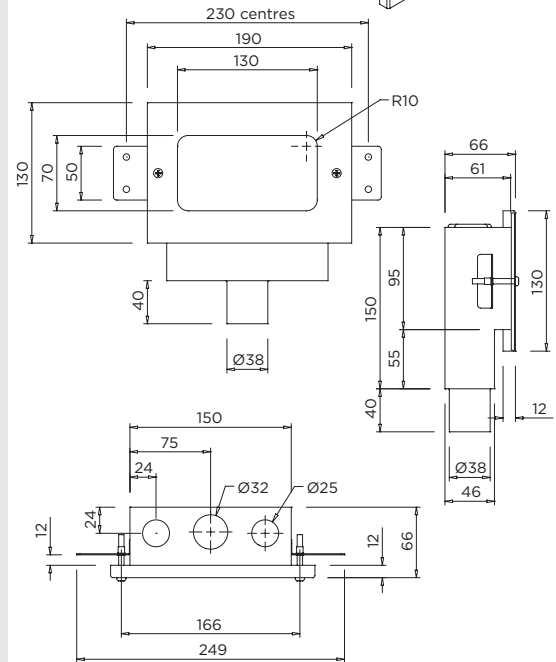
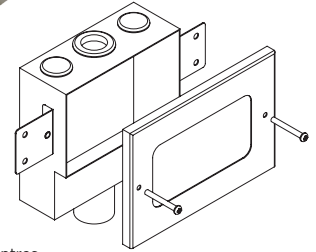
## INSTALLATION NOTES

**General:** 1) Connection sizes, overall dimensions and configurations are fully customisable for every project. 2) A sealant should be applied around condensate/discharge wastes at point of entry into tundish and any entries not utilized.

**Model D-TDW-A:** supplied with a 50mm male thread connection.



## D-TDW-B



## INSTALLATION NOTES

**Model D-TDW-B:** supplied with plugs for 2 entries to prevent vermin from entering tundish if not utilized by pipe work. A 38mm spigot outlet is designed to connect to copper or PVC adaptor / slip coupling.