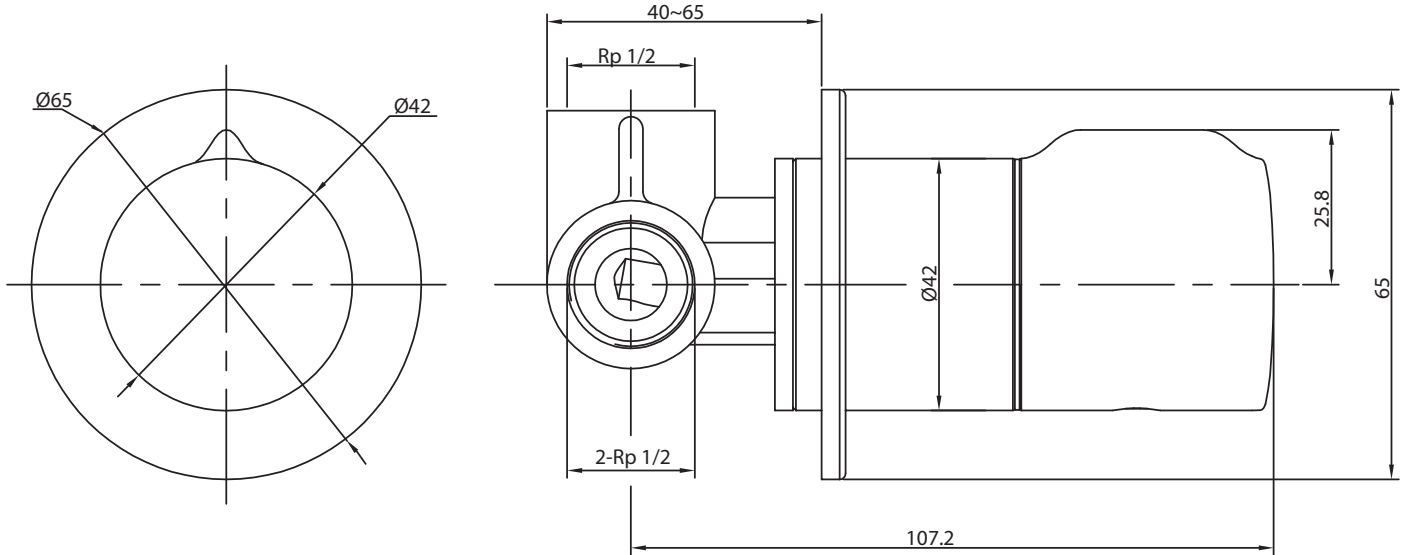


FLOW SHOWER MIXER



Dimensions are nominal measurements only.

SPECIFICATIONS

Recommended Use	Domestic, Hotel & Commercial	
Colour	Chrome	
Material	Brass	
Pressure Rating	Minimum Continuous Working Pressure	150 kPa
	Maximum Continuous Working Pressure	500 kPa
Temperature Rating	Minimum Continuous Working Temperature	1°C
	Maximum Continuous Working Temperature	75°C
Suitable Hot Water Units	Storage Tank	Yes
	Continuous Flow	Yes
	Gravity Feed	No
Cartridge Type	Progressive	
Retrofit Suitability	No	



To see the complete MILLI range go to www.reece.com.au/bathrooms

CLEANING RECOMMENDATIONS

We recommend the use of soapy water or approved cleaners.

This product should not be cleaned with abrasive materials.

Damage caused by any improper treatment is not covered by the product warranty. Refer to Warranty Conditions.

FLOW SHOWER MIXER

INSTALLATION INSTRUCTIONS

Note

Mixer must be installed to the requirements of AS/NZS 3500 by a qualified plumber. Your mixer comes to you already factory assembled and tested. We do not recommend the dismantling of any internal part of the mixer. The mixers are factory tested and sealed so as to give the best performance.

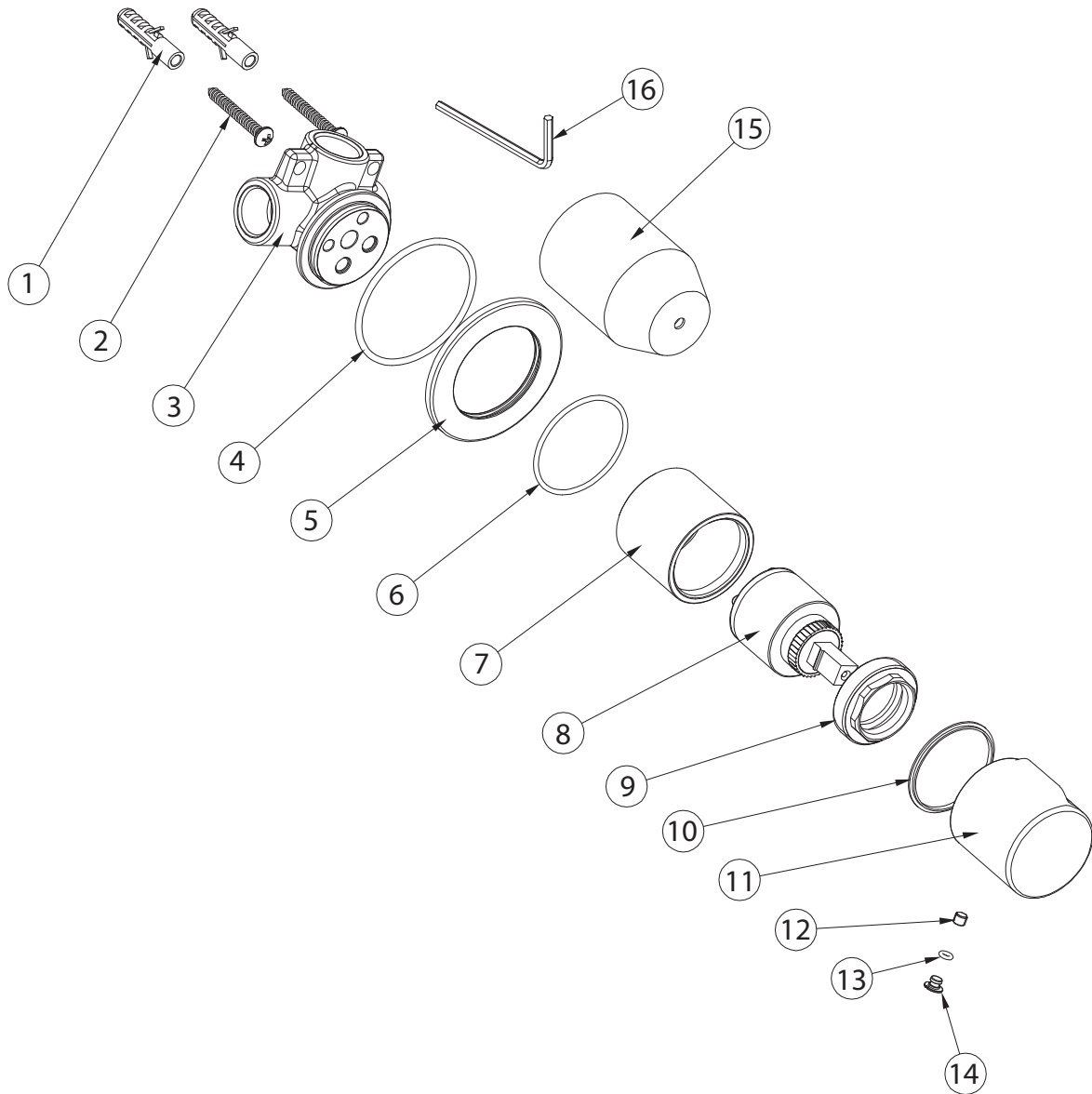
Mixers are recommended for use on mains pressure and instantaneous systems only. Equal pressure for hot and cold water supply is required for this mixer.

Installation Procedure

1. Please flush out new pipe work prior to connecting the new mixer
2. During installation protect the exposed surface finish by using the plastic cover provided
3. In a typical installation, the mixer is mounted on a timber/metal noggin and secured using suitable screws through the mounting lugs
4. Connect mixer to hot and cold water supply
5. Connect to bath or shower outlet
6. Pressure check all connections. Leaking joints are not covered by the warranty
7. Recommended maximum tile cutout for cover plate not to be larger than 50mm
8. When the wall is finished (eg. tiling), remove the plastic cover and fit the cover plate and handle

FLOW SHOWER MIXER

COMPONENT LISTING



No.	Description
1	Fixing Plugs
2	Fixing Screw
3	Mixer Body
4	Rubber Seal
5	Cover Plate
6	O Ring
7	Cartridge Sleeve
8	Cartridge

No.	Description
9	Cartridge Locknut
10	Teflon Glide Ring
11	Mixer Handle
12	Grub Screw
13	O Ring
14	Chrome Cover
15	Protective Cover
16	Allen Key