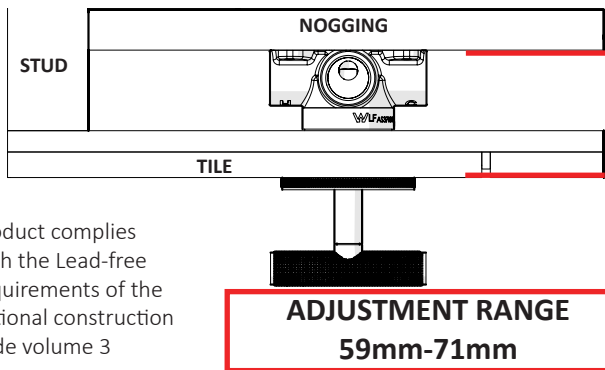


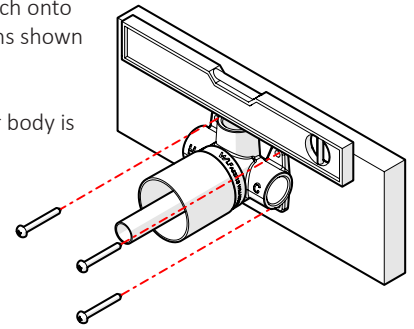
Milli Etch Progressive Shower Mixer Tap



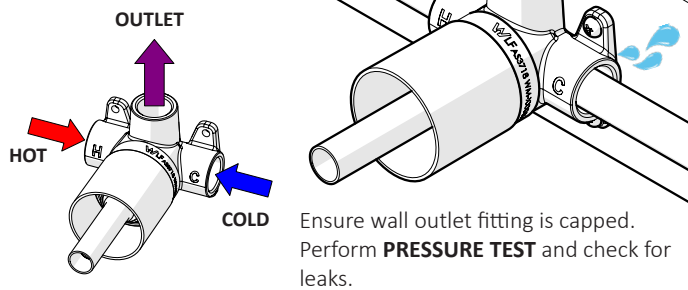
Product complies with the Lead-free requirements of the national construction code volume 3

- 1 Screw the Mixer Breach onto Nogging to dimensions shown in adjustment range.

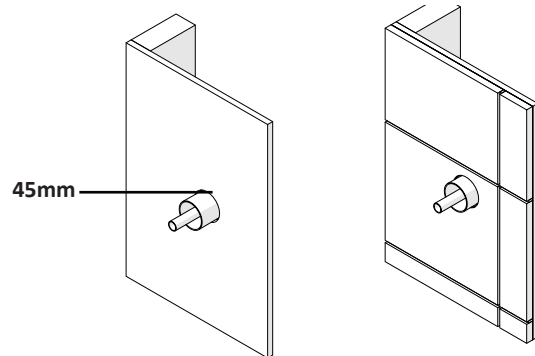
Ensure that the mixer body is level.



- 2 Plumb all connections to Mixer Body.

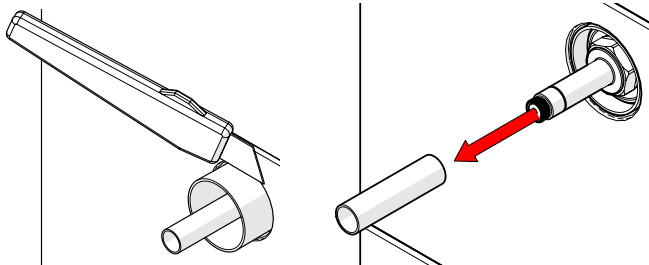


- 3 Drilling a 45mm hole. Waterproof and Tile as shown.

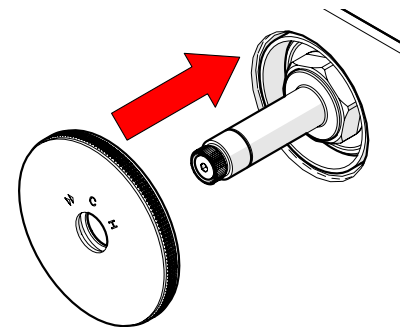


- 4 Trim waterproofing Sleeve flush with tile face.

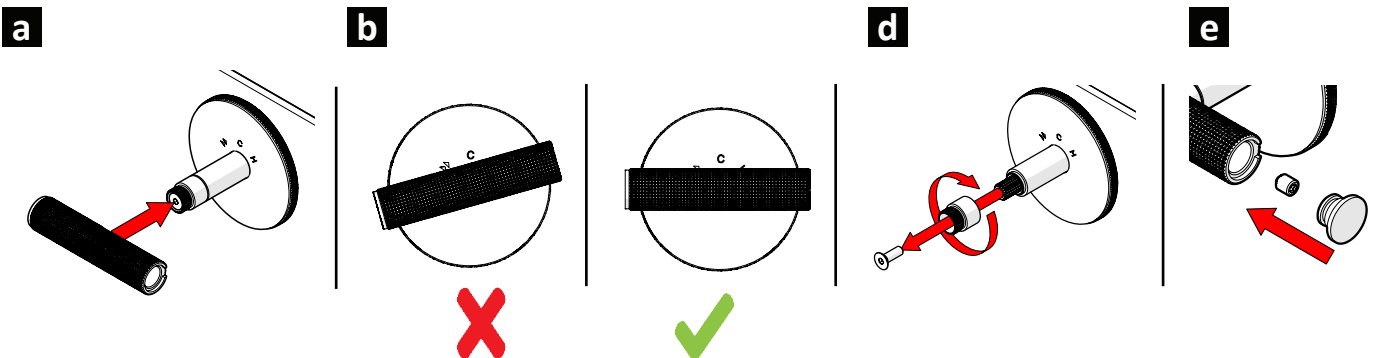
Remove Protective Cover as shown.



- 5 Push Dress Plate onto Mixer.



- 6 Install Handle ensuring it is level in the OFF position. If the Handle is not level follow below steps to adjust.



Care Details

We recommend the use of soapy water or approved cleaners. This product should not be cleaned with abrasive materials. Damage caused by any improper treatment is not covered by the product warranty. Refer to Warranty Conditions

Installation should comply with Australian standard AS3500.1 or relevant local authority requirements. Showers may not be suitable for use within:

- Gravity-fed water systems
- Some instantaneous hot water systems

Any flow controller incorporated in the outlet to be tightened to prevent removal by hand. As Per AS3718

Plumbers, please ensure a copy of the installation instruction is left with the end user for future reference.

