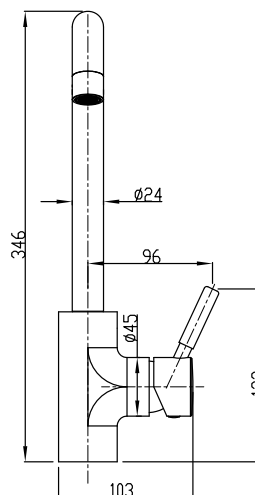
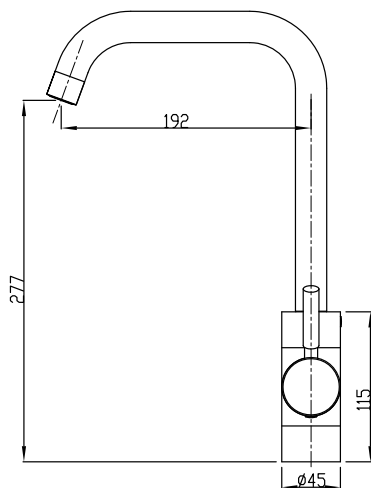


# MIZU

## DRIFT SQUARE G/NECK SINK MIXER



### SPECIFICATIONS

<b>Recommended use</b>	Domestic, hotel and commercial
<b>Colour availability</b>	Chrome
<b>Pressure rating</b>	Maximum continuous operating pressure 1000kPa.  Note: As per AS/NZS 3500 pressure must be limited to 500kPa on any new home, extension or renovation.  Note: For best performance and longer life we recommend an operating pressure between 150-500 kPa
<b>Temperature rating</b>	Maximum continuous working temperature 80°
<b>WELS</b>	Stars 4 Flow Rate 7.5 L/min
<b>Suitable Hot Water Units</b>	Storage tank: Yes Continuous Flow: Yes Gravity Feed: Not suitable
<b>Standards</b>	AS/NZS 3718



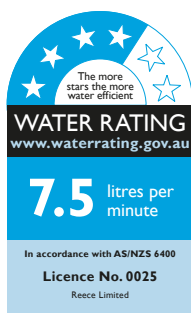
To see the complete MIZU range go to [www.reece.com.au/bathrooms](http://www.reece.com.au/bathrooms)

### CLEANING RECOMMENDATIONS

We recommend the use of soapy water or approved cleaners.

This product should not be cleaned with abrasive materials.

Damage caused by any improper treatment is not covered by the product warranty- refer to Warranty Conditions.



**Disclaimer:** Products in this specification manual must by regulation be installed by licensed and registered trade people. The manufacturer/distributor reserves the right to vary specifications or delete models from their range without prior notification. Dimensions are nominal measurements only. Dimensions and set-outs listed are correct at time of publication however the manufacturer/distributor takes no responsibility for printing errors.

Tech Page Version 1

m i z u reece

# MIZU

## DRIFT SQUARE GOSENCK SINK MIXER

### INSTALLATION

#### Note

The installation must comply with requirements of AS/NZS 3500 and the mixer must be installed by a licensed plumber.

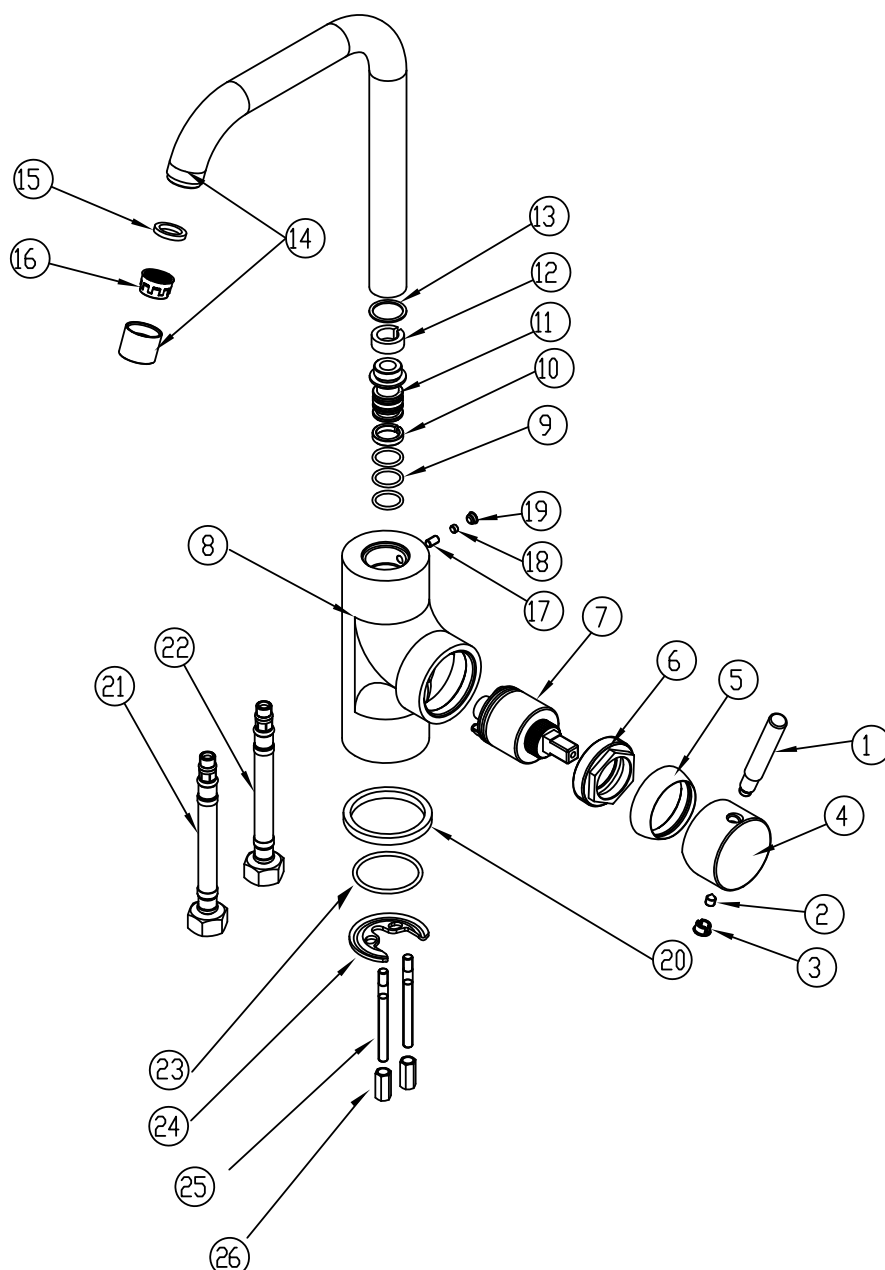
1. Please flush out pipe work prior to connecting the new mixer.
2. All mixers should be installed with isolating stop cocks. Arco brand recommended.
3. This mixer is suitable for high pressure applications where both hot and cold water supply pressures are at 150kPa or above. Equal pressure for hot and cold water supply is required for this mixer.
4. Fit fixing rods (25) into mixer body (8).
5. Place the mixer body (8) into the sink hole making sure first that the flexible hoses (21 & 22) are firmly tightened into the base of the mixer body and that the base washer (20) is in position.

6. Do not use Teflon tap on threads.
7. From underneath, apply plate seal (23), horse shoe plate (24) and hex nut (26).
8. Lock the mixer onto the sink by tightening the hex nut (26).
9. Clean aerator (16) at regular intervals, particularly if you notice a drop in pressure.

#### Servicing-Replacement of Cartridge:

1. Lift chrome cover (3) and unscrew the grub screw (2) using allen key.
2. Remove sink mixer handle (1 & 4, cartridge dome (5) and unscrew the lock nut (6).
3. Pull out cartridge (7) and replace with new, making sure the cartridge sits properly into the mixer body. Replace the lock nut (6), cartridge dome (5) and sink mixer handle (1 & 4).
4. Tighten grub screw (2) and push in chrome cover (3).

#### Exploded View



Item Description	Product Code
<b>Sink Mixer Handle Complete</b>	9503516
1. Pin Lever	
2. Grub Screw	
3. Chrome Cover	
4. Handle Body	
5. Cartridge Dome	
6. Cartridge Locking Nut	
7. Cartridge	9503517
8. Mixer Body	
9. Spout O-Rings	
10. Rubber Washer	
11. Spout Connection Assembly	
12. Rubber Connector	
13. Spout O-Ring	
<b>Aerator Complete</b>	
14. Aerator	
15. Aerator Rubber Washer	
16. Aerator Insert	
17. Grub Screw Pin	
18. Grub Screw (Spout)	
19. Spout Grub Screw Cap	
20. Base Washer	
21. Flex Hose (Hot)	9503519
22. Flex Hose (Cold)	9503520
<b>Sink Mixer Fixing Kit</b>	9503518
23. Plate Seal	
24. Horse Shoe Plate	
25. Fixing Rods	
26. Hex Nut	

Plumbers, please ensure a copy of the installation instructions is left with the end user for future reference