



enda Accessible Compliant Shelf

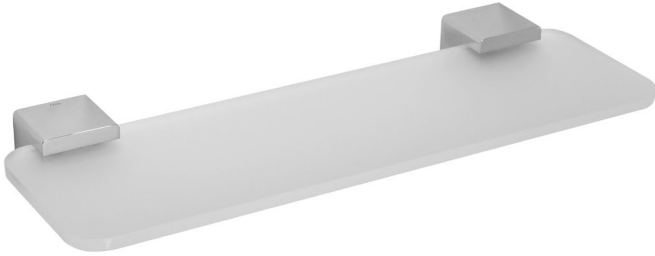
Model RBA1622-106

Materials & Features

Brackets are manufactured from heavy duty brass with all exposed surfaces in bright chrome. enda is a suite of attractive commercial grade accessories with radiused corners and edges to increase comfort and minimise catch.

Technical Detail

Material: Heavy Duty Brass, Bright Chrome Finish
Shelf: Frosted Acrylic
Bracket: Heavy Duty Brass Lug
Fixings: Included

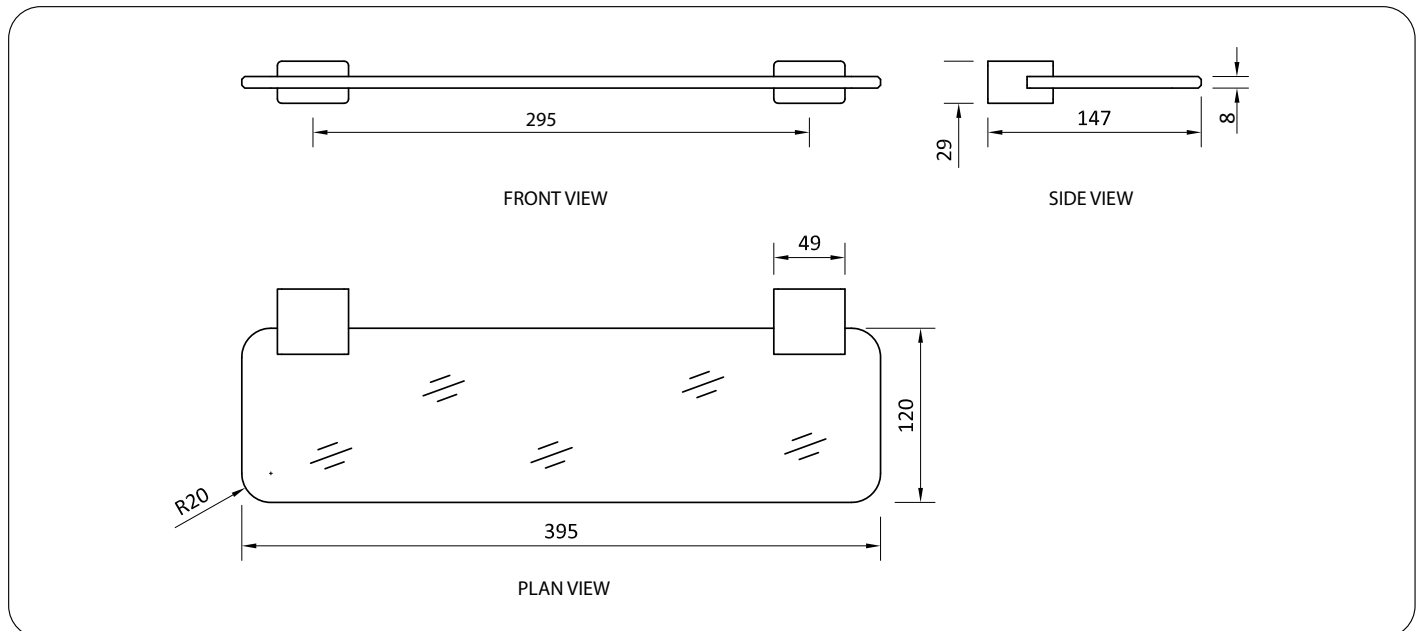


Available Model

RBA1622-106

enda Accessible Compliant Shelf

Important: Installation instructions and current rough-in details should be furnished with each fixture. Do not rough in without certified dimensions. Dimensions are subject to manufacturer's tolerance of +/-10mm.



As improvements in the design and performance of RBA products are continuous, specifications may be subject to change without notice. The illustrations and descriptions herein are applicable to production as of the date of this Technical Data Sheet. Revised 03/20 © 2020 by RBA Group TD/Model RBA1622-106/0320



ända Robe Hook #1

20mm[W] x 65mm[H] x
21mm[D]

RBA1622-102



ända Robe Hook #3

20mm[W] x 45mm[H] x
35mm[D]

RBA1622-104



ända Toilet Roll Holder #1

140mm[W] x 30mm[H] x
85mm[D]

RBA1622-107



ända Toilet Roll Holder #2

130mm[W] x 81mm[H] x
74mm[D]

RBA1622-105



ända Soap Dish

110mm[W] x 38mm[H] x
110mm[D]

RBA1622-101



ända Acrylic Shelf to AS1428.1-2009

395mm [W] x 29mm[H] x
147mm[D]

RBA1622-106



ända Single Towel Rail

600mm[W] x 30mm[H] x
70mm[D]

RBA1622-108



ända Double Towel Rail

600mm[W] x 30mm[H] x
105mm[D]

RBA1622-109