

NEO SLIMLINE WALL HUNG VANITY UNIT



Neo combines function with exclusive, uncomplicated design. The needs and desires of the modern family strongly influenced the creation of Neo, resulting in a contemporary, highly adaptable range of basins with superior quality furniture.

Neo Slimline provides your bathroom with a minimalist feel and a sense of additional space due to the slimmer cabinet body.

SPECIFICATIONS

Recommended Use	Domestic, Hotel and Commercial
Material	Exterior: Timber Laminate on HMR board, Thermofoil on board Internal: Laminate on HMR board
Colour	Maison Oak, Black Wenge, White Satin
Basin Type	Neo Wall Hung Basins. See separate tech pages for the Neo range
Fixing	Bolted/screwed to wall by licensed trades person Fixings not supplied Installer to determine appropriate wall fixings
Drawers	Soft Close Drawers
Handle Type	Polished Chrome - Rectangle or Quad Matt Black - Square Can be positioned left, right or centre of each door
Micro Trap	Supplied with a 40mm pvc micro trap (15168)



To see the complete OMVIVO range go to www.reece.com.au/bathrooms

VANITY	700/700 12 Litre	1000	1400 Double
Width mm	700	1000	1400
Depth mm	450	450	450
Height mm (including basin)	505/535	505	505
Number of drawers	1	1	2

NEO SLIMLINE WALL HUNG VANITY UNIT

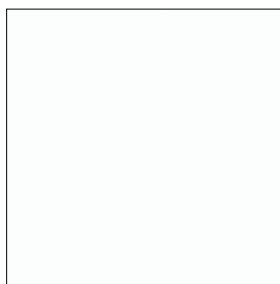
CABINET OPTIONS



MAISON OAK

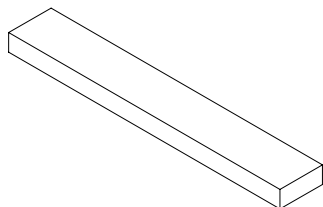


BLACK WENGE

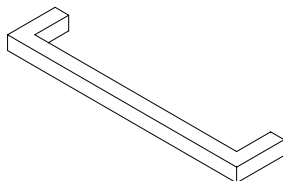


WHITE SATIN

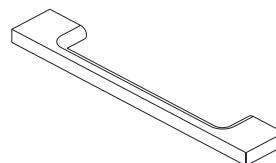
CHROME HANDLE OPTIONS



RECTANGLE



QUAD



SQUARE

MATT BLACK HANDLE OPTIONS

DETAILED CLEANING INSTRUCTIONS

Regular cleaning will assist to keep your solid surface looking fantastic and reduce wear and dirt build up. Spills should be cleaned promptly.

Clean with mild detergent or soapy water and a soft cloth, sponge or non-scratch scourer*.

For stubborn marks start with the non-scratch scourer and a mild detergent, if required use a diluted very mild abrasive cleaner* cleaning in light circular motions.

Intense clean/repair: For extreme marks and light scratches a very Light buff in circular motions using the finest grade sand/glass paper will restore the surface. A heavier grade of sandpaper will scratch the surface which can be removed by then using a light sand paper. Avoid applying excessive pressure or clean/rub the same area for a prolonged time unless repairing a scratch or damage.

*Always test 'non scratch' and 'mild abrasive' products in a non-conspicuous area first to ensure suitability as brands can differ.

Important notes: If the product is created from a combination of Solid surface and another material such as glass or Softskin, it is important that the cleaning instructions for Solid surface are not carried out on the alternate material. Damage may occur which will void your warranty.

To maintain a uniform appearance, you may need to clean the entire surface. Never use sharp products such as steel wool or aggressive, commercial grade / strong cleaners or chemicals (e.g. acetone, trichloroethylene, acids, and caustic soda) as these may damage and scratch the surface. For best results always finish by wiping surface clean of all detergents and dry with a soft clean cloth.

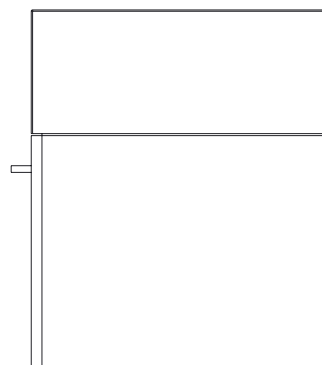
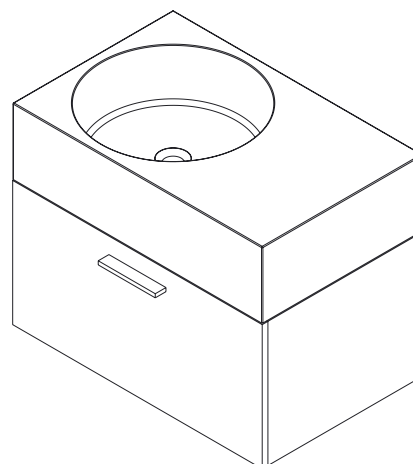
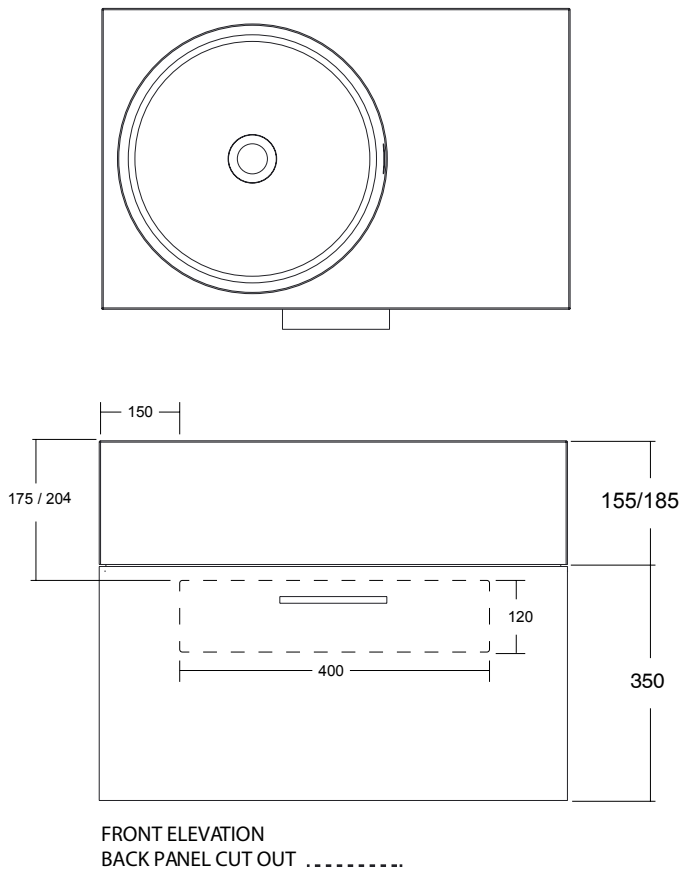
Your furniture should be cleaned with a mild, non-acidic, non-abrasive detergent and soft cloth. Finish by cleaning off detergents with a soft slightly damp cloth and towel dry. Always clean spills and water immediately. It is important that the cleaning instructions for your solid surface basin are not carried out on the vanity as this will scratch the finish.

Damage caused by any improper treatment is not covered by the product warranty – refer to Warranty Conditions.

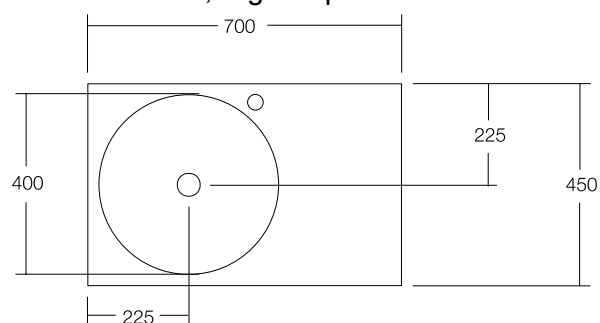
NEO SLIMLINE WALL HUNG VANITY UNIT

LINE DRAWINGS

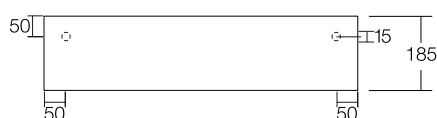
700 Cabinet



Left Hand Bowl, Right Tap Hole



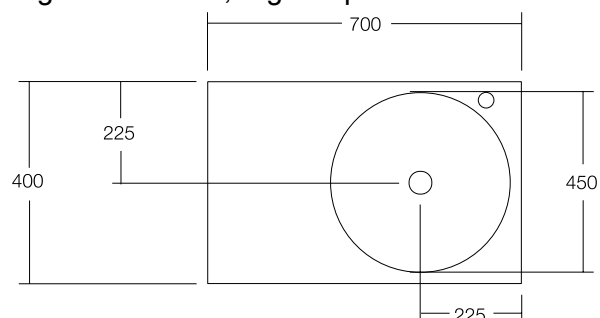
Neo 700 12 Litre Basin



Standard Neo 700 Basin



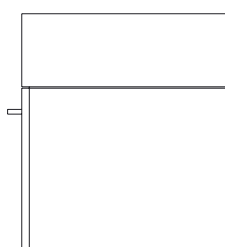
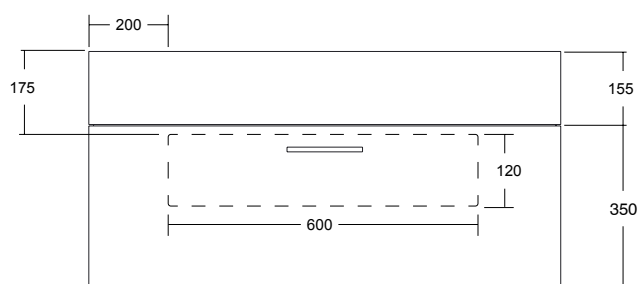
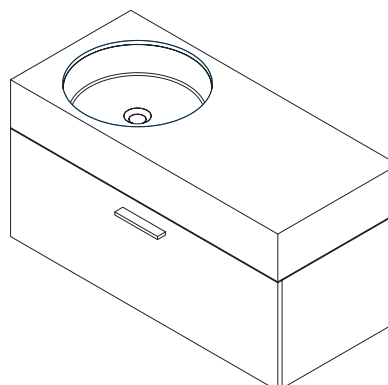
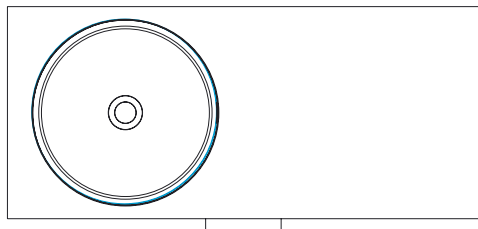
Right Hand Bowl, Right Tap Hole



NEO SLIMLINE WALL HUNG VANITY UNIT

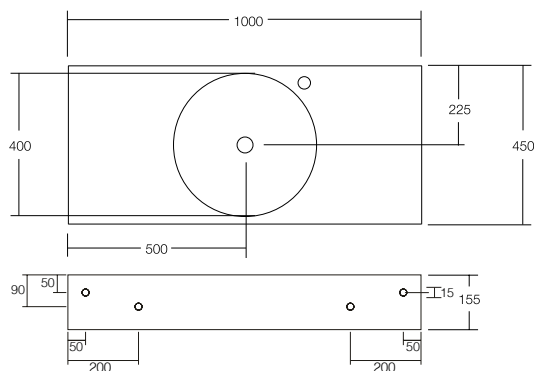
LINE DRAWINGS

1000 Cabinet

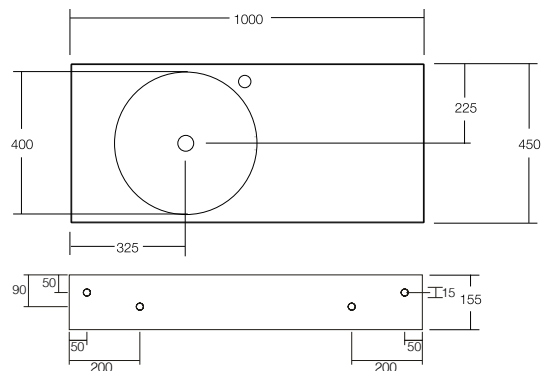


FRONT ELEVATION
BACK PANEL CUT OUT

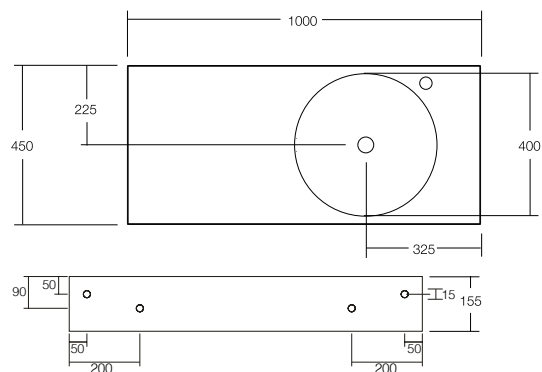
Centred Bowl, Right Tap Hole



Left Hand Bowl, Right Tap Hole



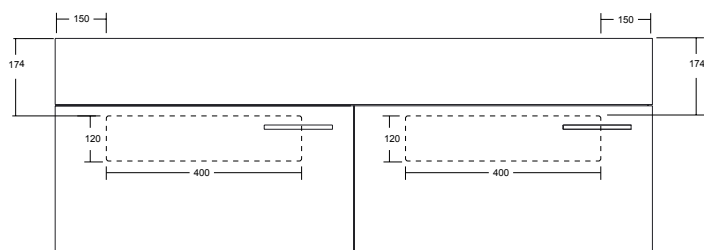
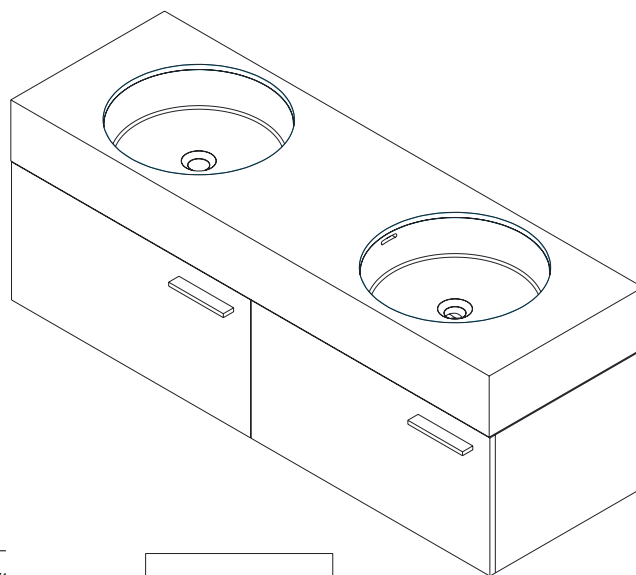
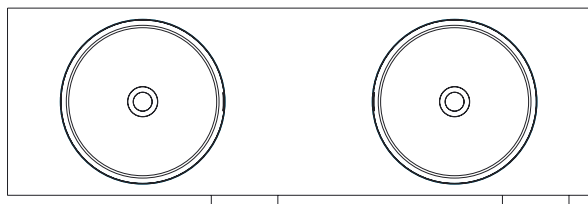
Right Hand Bowl, Right Tap Hole



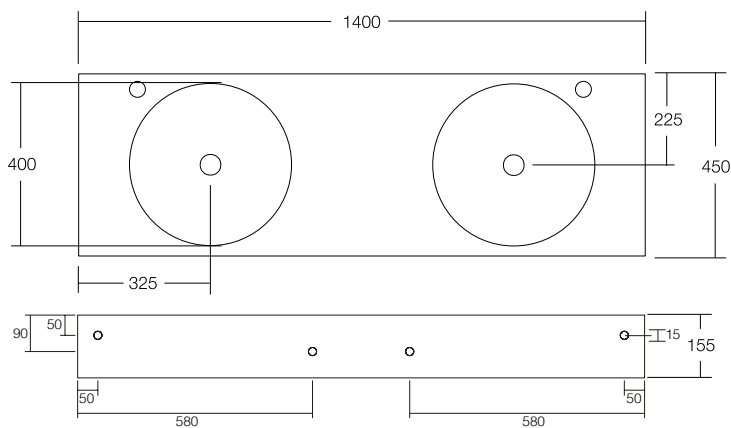
NEO SLIMLINE WALL HUNG VANITY UNIT

LINE DRAWINGS

1400 Double Cabinet



FRONT ELEVATION
BACK PANEL CUT OUT



NEO SLIMLINE WALL HUNG VANITY UNIT

NEO SLIMLINE CABINET INSTALLATION INSTRUCTIONS

No claims for damages / defects will be recognised after installation.

Prior to installation it is important to unpack and inspect your products to ensure no damage has occurred in transit and that the product IS CORRECT.

If damage has occurred, or a visible defect exists, do not proceed with installation and contact supplier IMMEDIATELY.

Step 1. Remove drawer and align cabinet directly under the already installed Neo basin.

See figure 2 and 3.

NOTE: Often cabinets are made slightly smaller than the vanities so the basin can overhang the cabinet sides. Ensure your basin is centred over the cabinet when installing.

Step 2. Installer to determine appropriate fixings and provide adequate wall framing (studs/nogging) to ensure secure mounting of cabinet.

Step 3. If the wall is not level/square, packers must be used to prevent cabinet twisting/malfunction.

Step 4. As a minimum, use fixings at all corners and top and bottom centres. Use additional fixings if required. All fixings must be secured to wall framing (studs/noggins). See figure 4.

Step 5. Once cabinet is attached to wall, connect micro trap 15168 (supplied). Refer figure 4.

Step 6. Insert the drawer by simply locating the runners and pushing it in. Ensure runners 'click' into location. Test operation by opening and closing ensuring it's secure to the cabinet.

Figure 2.

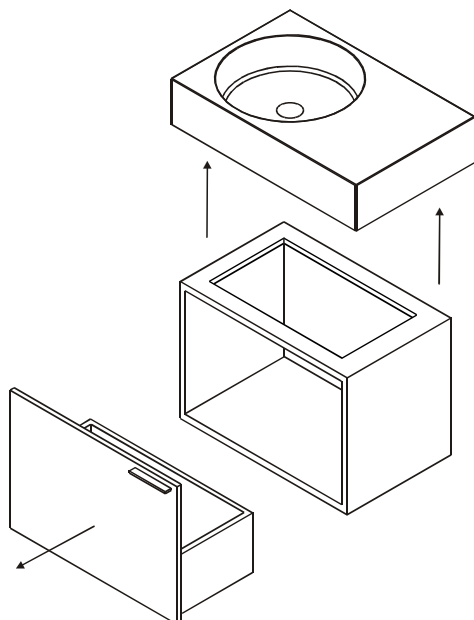
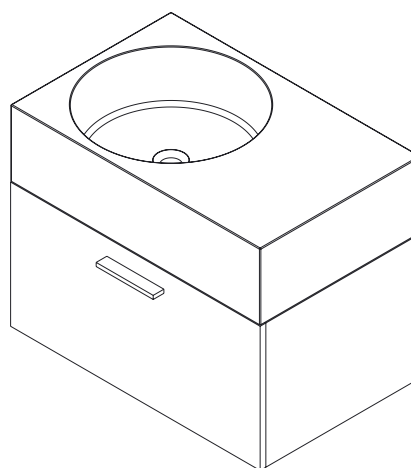
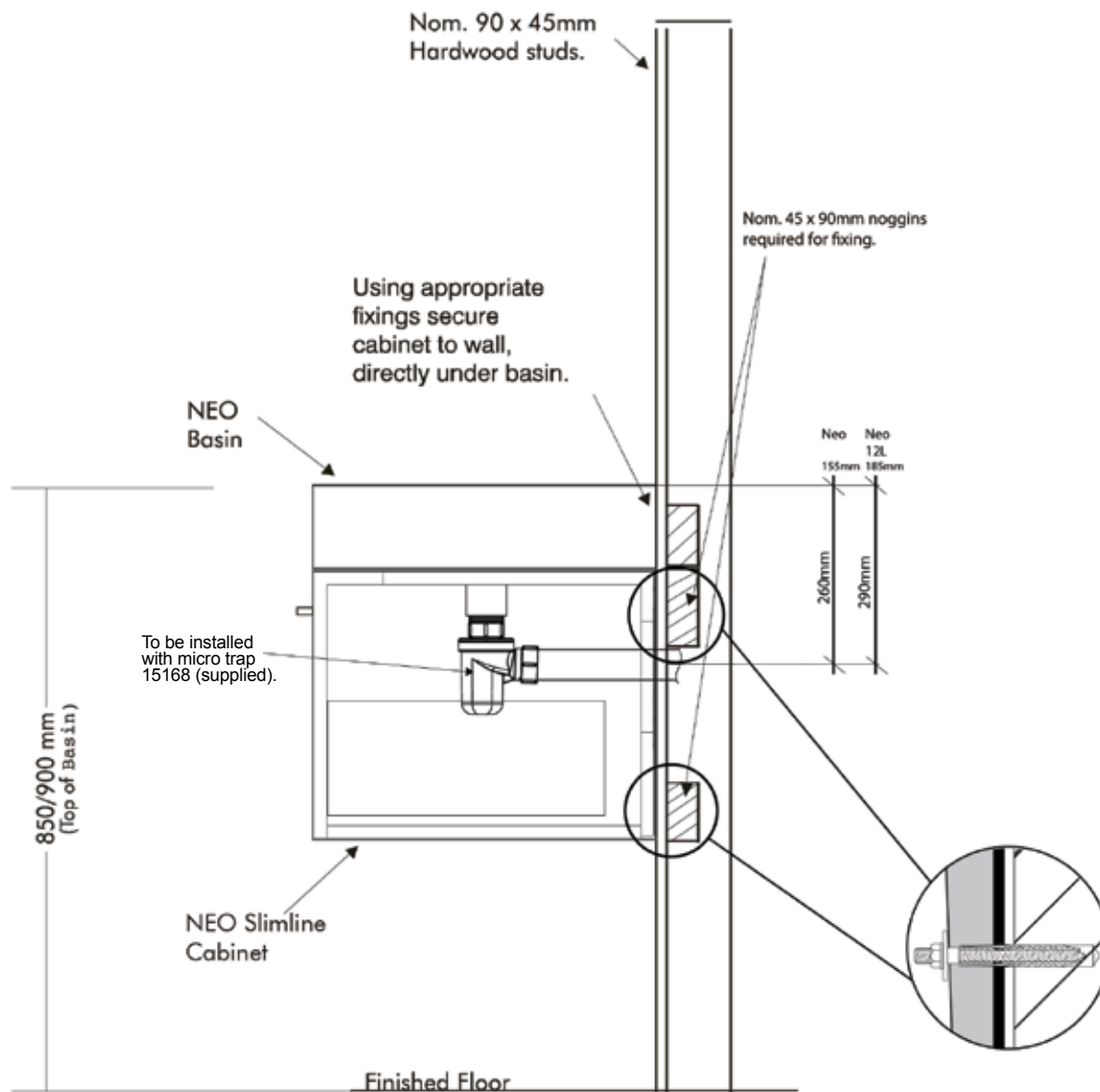


Figure 3.



NEO SLIMLINE WALL HUNG VANITY UNIT

Figure 4.



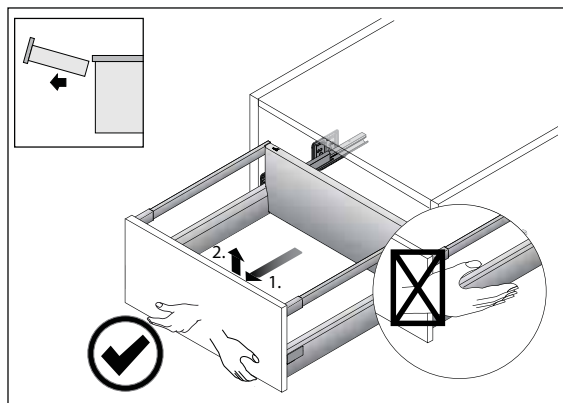
Dimensions are approximate. Information provided in this installation is a guide only. We recommend having the product on site prior to rough in.

Plumbers, please ensure a copy of the installation Instructions is left with the end user for future reference

NEO SLIMLINE WALL HUNG VANITY UNIT

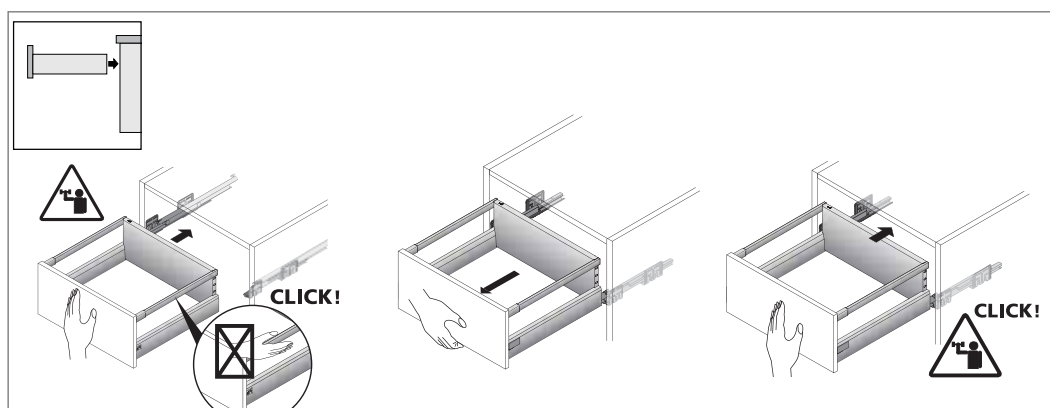
NEO SLIMLINE CABINET DRAWER ADJUSTMENT INSTRUCTIONS

Figure 5. Removing drawer



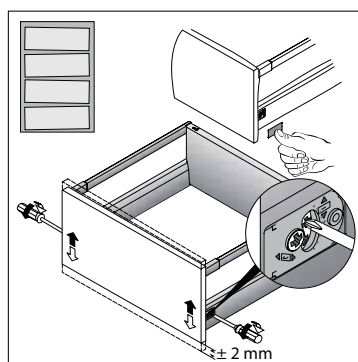
Remove drawer by pulling fully out and then pull upward, holding the underside front

Figure 6. Replacing drawer

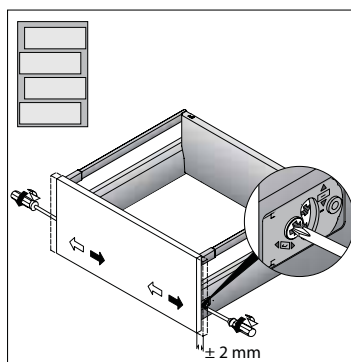


Drawer is inserted by locating it on the runners and pushing it in. Ensure runners 'click' into location. Test operation by opening and closing

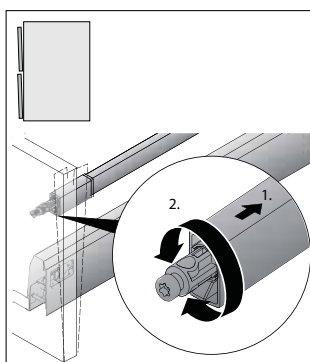
Figure 7. Adjusting drawer front



Drawer front height is adjustable at both left and right by maximum ± 2 mm. Rotate click wheel with screwdriver firmly located in place.



Drawer front sideways location adjusts left and right by maximum ± 2 mm. Use screwdriver on adjustment screws at left and right. Adjust as required.

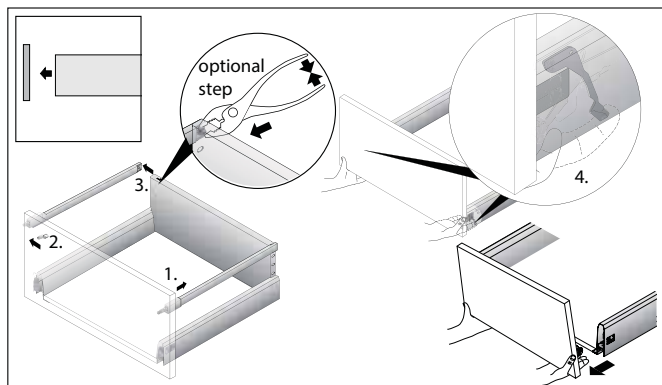


Drawer front tilt is adjustable. Slide back rail cover. Rotate plastic lug in either direction to adjust accordingly.

NEO SLIMLINE WALL HUNG VANITY UNIT

NEO SLIMLINE CABINET DRAWER ADJUSTMENT INSTRUCTIONS

Figure 8. Replacing drawer front



If front panel requires replacing it is easily removed & reinstalled.

1. Slide left & right rail covers back
2. Detach rails from drawer front panel by pushing to one side.
3. (Optional) Using pliers, remove rails by closing lugs & pulling rail away
4. Disengage front drawer panel by actuating left and right levers. Remove panel