

Type 26 Lab Bench Bib Tap with Anti-Vandal Aerator

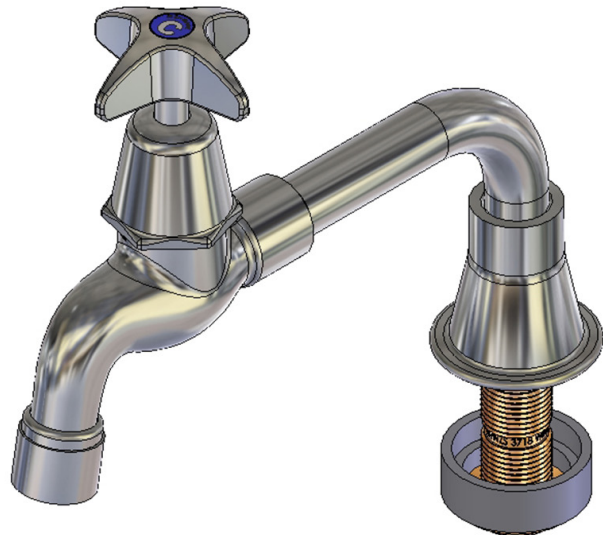
LF118S

Enware's School Lab series robust water fittings are built for the rigours of school laboratory applications.

This product is part of NSW School Specification and includes an aerator.

KEY FEATURES

- Vandal resistant school pattern handle
- Jumper valve
- 5 Star WELS (6 L/min) aerator aerator supplied standard
- High quality construction with durable chrome plating
- Serviceable with all wearing components replaceable, thus providing an even longer life



PRODUCT CODES

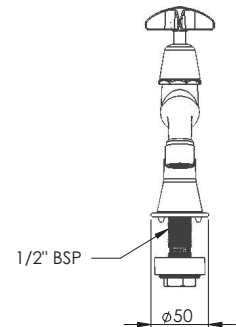
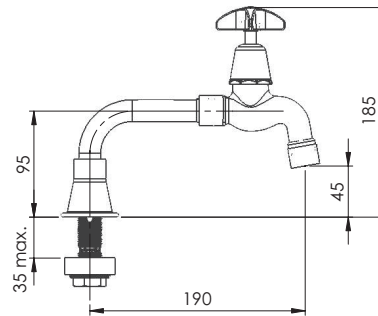
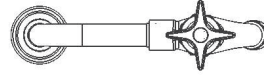
LF118S	Type 26 Lab Bench Bib Tap with Anti-Vandal Aerator - 6 lpm
--------	---

Version: Feb 22

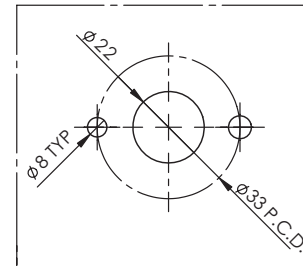
Type 26 Lab Bench Bib Tap with Anti-Vandal Aerator

TECHNICAL INFORMATION

Maximum Static Pressure	1200kPa
Working Pressure Range	30-500kPa
Maximum Working Temperature	95 °C (Jumper Valve)



INSTALLATION DETAIL
(BENCHTOP CUTOUT)
CHECK LOCKING PIN
POSITION BEFORE
INSTALLATION AS
ORIENTATION MAY VARY



Enware products are to be installed in accordance with the Plumbing Code of Australia and AS/NZS3500. Reference should also be made to the Australasian Health facility Guidelines (AHFG), ABCB and Local Government regulations when considering the choice of, and the installation of these products.

Enware Australia advises:

1. Due to ongoing Research and Development, specifications may change without notice.
2. Component specifications may change on some export models.
3. Refer to warranty statement for warranty details - www.enware.com.au/warranty

Version: Feb 22