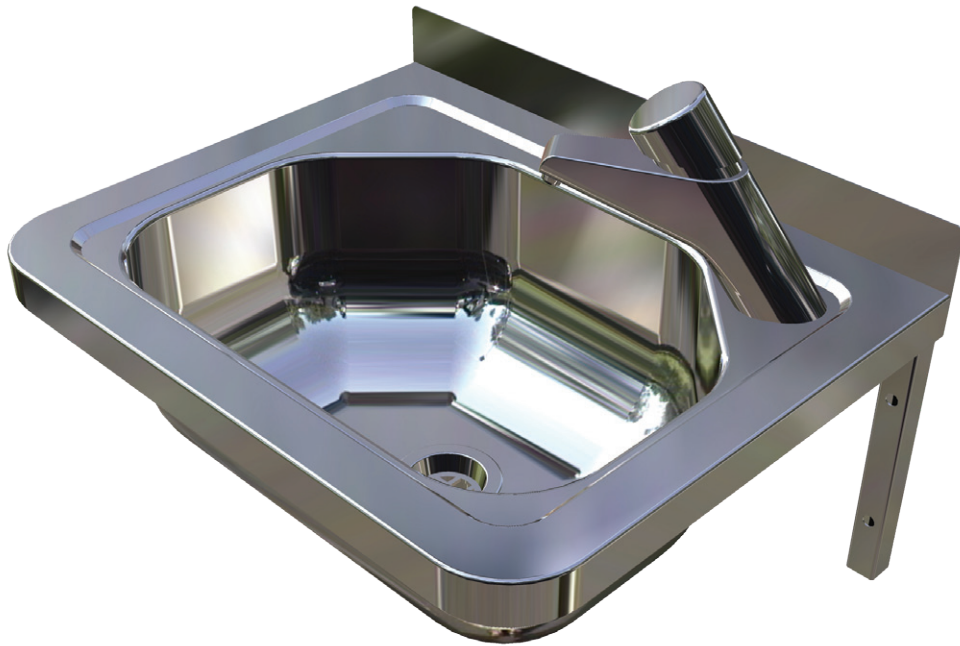


# COMPACT HAND BASIN

6.11

HAND BASINS

#HBMB / COMPACT HAND BASIN



Scan QR code  
to view online



*Image shows Model HBMB-TW-9201  
Compact Hand Basin with Deluxe Timed Flow Tap*

## features and benefits

- Compact, convenient size
- 8 litre bowl capacity
- Grade 304 high polished S.S.
- Rounded front corners
- 40mm waste & wall brackets supplied
- 30mm front fascia
- 30mm blade rear upstand
- 1 or 2 tap holes
- Choice of tapware styles

## about

The *BRITEX Stainless Steel Compact Hand Basin* is a robust, compact sized hand basin with high polished finish and rounded front corners for additional safety. Mounted on stainless steel brackets it comes complete with 40mm waste outlet and left or right hand tap hole as required. Ideal for use in schools, public amenities, sporting clubs and commercial applications.

## sample spec. text

*BRITEX S.S. Compact Hand Basin - 410L x 330W x 140D. Supplied complete with S.S. wall brackets, 40mm waste outlet and XXXX tapware. - Product Code HBMB-TW-XXXX*

NB Please refer to reverse page for tapware and basin options

\*RED TEXT may denote a **variable** where one option only is to be selected, a **nominal dimension** that needs to be specified, or an **optional feature** that can be removed if not required. Please refer to the back of this page for additional specification details and options.

VISIT [BRITEX.COM.AU](http://BRITEX.COM.AU) TO DOWNLOAD BIM FILES, CAD DRAWINGS AND THE MOST CURRENT PRODUCT LITERATURE.



**MELBOURNE**  
Britex Place, Mirra Crt  
Bundoora VIC 3083  
t (03) 9466 9000  
f (03) 9466 9044

**SYDNEY**  
16 Northumberland Drv  
Taren Point NSW 2229  
t (02) 9531 2100  
f (02) 9531 2800

**PERTH**  
Unit 1/8 Principal Link  
Malaga WA 6090  
t (08) 9249 5464  
f (08) 9248 6893

**BRISBANE**  
19 Manilla St  
East Brisbane QLD 4169  
t (07) 3363 2400  
f (07) 3363 2444

**ADELAIDE**  
The Britex Group  
SA State Office  
t 1300 764 744  
f 1300 784 306

[britex.com.au](http://britex.com.au) | [info@britex.com.au](mailto:info@britex.com.au) | A.B.N 83 004 309 737

# COMPACT HAND BASIN

PRODUCT CODE

**HBMB** Basin only

## HOW TO SPECIFY: Compact Hand Basin

Sample Specification Code

**A**      **B**  
**HBMB - TW-9201**

= Compact Hand Basin with Deluxe Timed Flow Pillar Tap

### Specification Key

A = Product Code

B = Tapware - if required  
 (see below for suggested tapware options)

### Suggested Tapware Options:

(see Tapware Section: 11 for complete range of options)



**TW-9201**  
 Deluxe Timed Flow  
 Pillar Tap



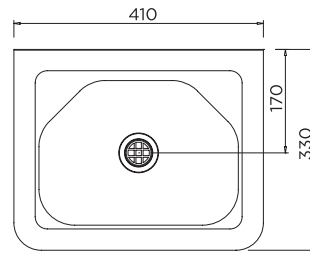
**TW-9101**  
 Eco Timed Flow  
 Pillar Tap



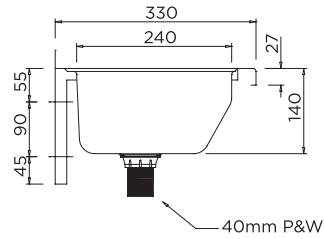
**TW-9110**  
 Euro Basin Mounted  
 Sensor Tap



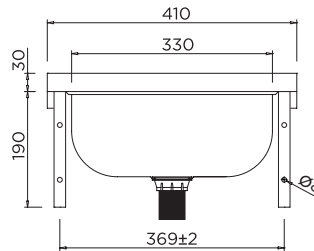
**TW-MIX-01**  
 Basin Mounted  
 Flick Mixer



MODEL HBMB Plan



MODEL HBMB Side Elevation



MODEL HBMB Rear Elevation

When specifying this product please include:

- Product Name and Code
- Product Dimensions
- Tapware details (if required)

specifying guide

options

- Tap holes
- Splashback Panel - Up to 500mm High

VISIT [BRITEX.COM.AU](http://BRITEX.COM.AU) TO DOWNLOAD BIM FILES, CAD DRAWINGS AND THE MOST CURRENT PRODUCT LITERATURE.



Due to ongoing research and our commitment to product development, details are subject to change without notice. Details accurate at time of print. Please refer to [britex.com.au](http://britex.com.au) for the most current product information. Allow +/- 5mm tolerance for dimensions and setouts shown in product literature.

[britex.com.au](http://britex.com.au) | [info@britex.com.au](mailto:info@britex.com.au) | A.B.N 83 004 309 737

