



WOLFEN™

INSTALLATION MANUAL

2266741 Wolfen Lead Free Trigger Spray

2266742 Wolfen Lead Free Pre Rinse Sink Mixer
Tap with Pot Filler - Compact

2266743 Wolfen Lead Free Pre Rinse Sink Mixer
Tap with Pot Filler





WOLFEN

CONTENTS

Intro	03
Technical Information	04
Unit Components	06
Installation Instructions	08
Warranty	10

Delivering unrivalled quality

Designed for absolute performance, Wolfen's commercial mixer products set new standards in quality and durability. Ergonomic design combined with precision engineering ensures that every Wolfen product is easy-to-use and made to last.

Here are just some of the many innovative features that make Wolfen mixers the smart solution.

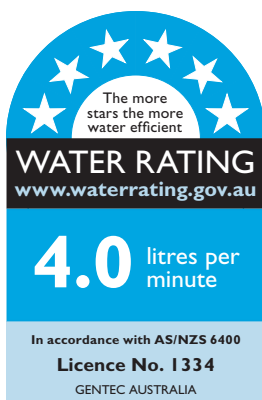
Scope of Use :

Wolfen Pre Rinse

- Installation is subject to the regulatory requirements of the plumbing code of Australia associated to AS/NZS 3500.4 (Taps)
- Inlet pressure: Maximum 500 kPa
- Manufacturers recommended pressure: 350 kPa
- Installation: Refer to further information in the manual
- Suitable for indoor use only
- Temperature recommendation:
 - Maximum operating temperature 80°C
 - Minimum operating temperature 5°C
- Material: Lead Free DZR Brass
- Mounting: Bench or in line installation

Features

- High efficiency cleaning with Blade Spray technology
- Effective ergonomic design for ease of use
- WELS 6 Star rated pre-rinse trigger spray
- Adjustable wall bracket design
- Integral backflow prevention
- Hygienic easy clean design



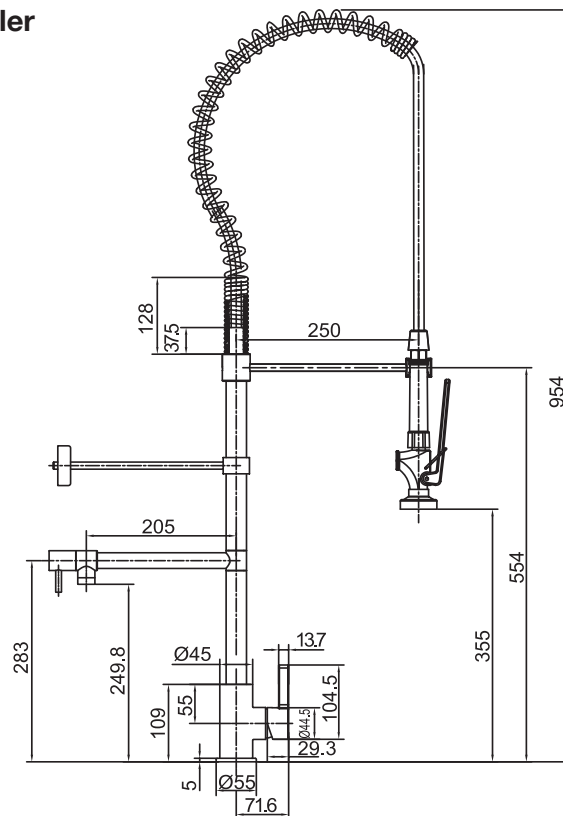
TECHNICAL INFORMATION

Model	Pre Rinse Sink Mixer	Pre Rinse Sink Mixer - Compact	Trigger Spray
Product Code	2266743	2266742	2266741
Product Type	Pre rinse unit	Pre rinse unit	Trigger spray
Colour	Chrome	Chrome	Chrome
Finish	Polished	Polished	Polished
Material	Lead Free Brass	Lead Free Brass	Lead Free Brass
Cartridge Type	Ceramic Disc Cartridge	Ceramic Disc Cartridge	N/R
Min Continuous Flow Working Pressure	150kPa	150kPa	150kPa
Max Continuous Flow Working Pressure	500kPa	500kPa	500kPa
Min Continuous Working Temperature	5°C	5°C	5°C
Max Continuous Working Temperature	80°C	80°C	80°C
Max Static Pressure	500kPa	500kPa	500kPa
Height	954mm	615mm	N/R
Clearance (Pot Filler)	205mm	205mm	N/R
Reach (Trigger Spray)	250mm	250mm	N/R
Recommended Working Pressure	350kPa	350kPa	350kPa



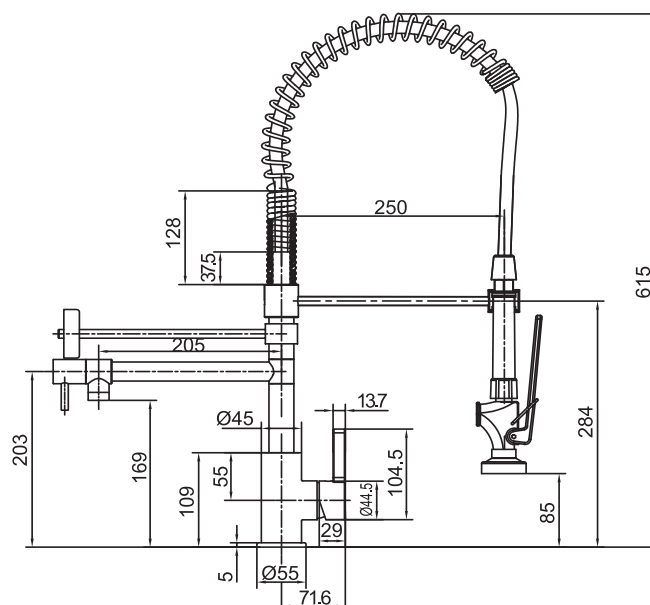
Wolfen Lead Free Pre Rinse Sink Mixer Tap with Pot Filler

2266743



Wolfen Lead Free Pre Rinse Sink Mixer Tap with Pot Filler - Compact

2266742

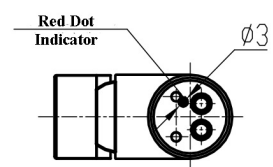
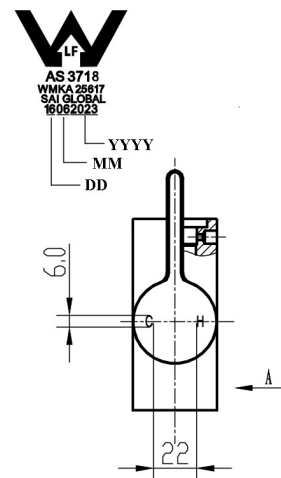
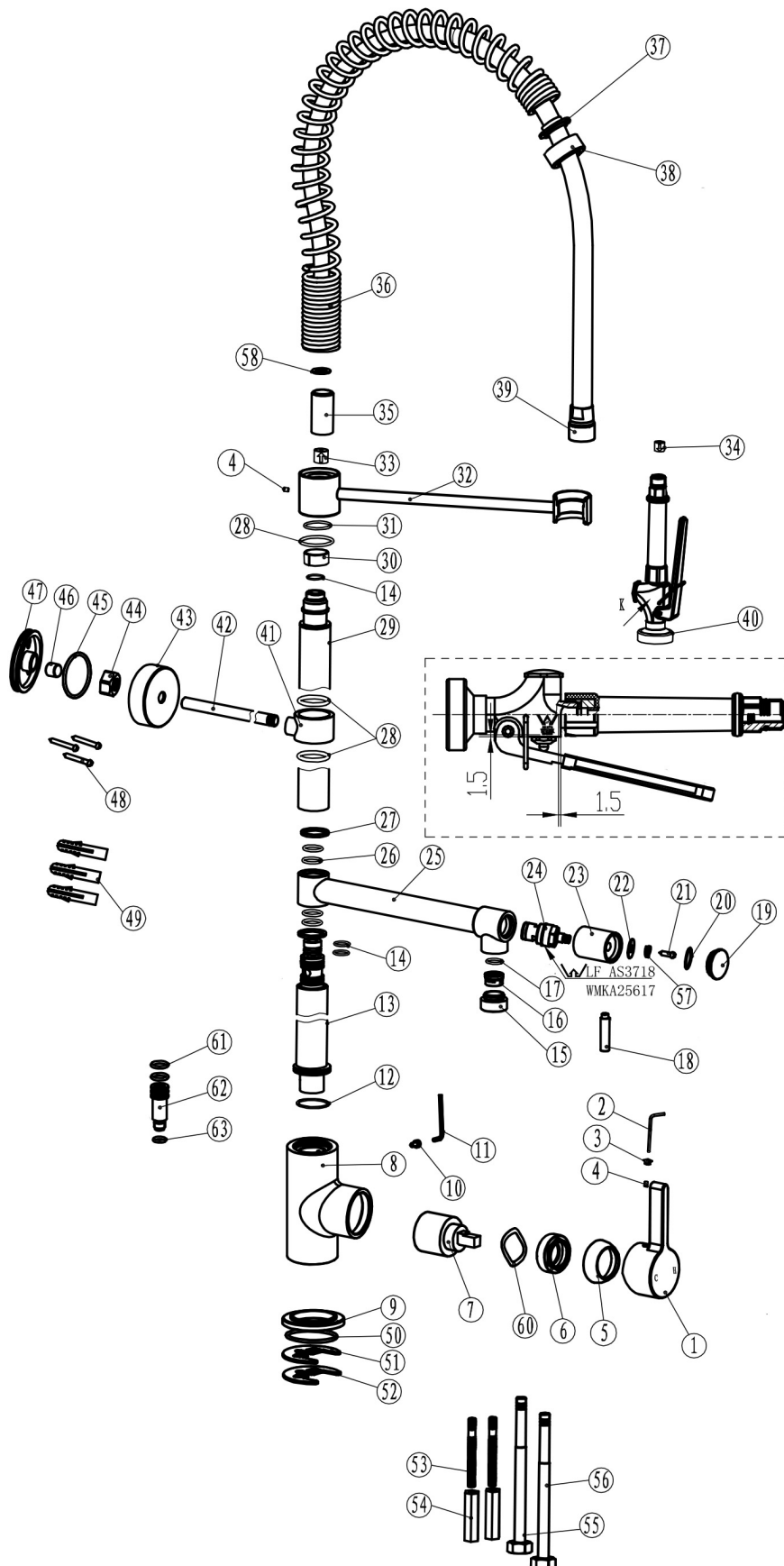


UNIT COMPONENTS

2266742, 2266743

No.	Code	Description	Qty
01	JETLF0074W	Mixer handle	1
02		Allen key	1
03		Handle porlug	1
04		M5 grub screw	1
05		Decorative cap	1
06		Lock nut	1
07	JETF9001	Mixer cartridge	1
08	JETFLF0082	Mixer body	1
09		Mixer flange and seat	1
10		M4 x 8 screw	1
11		Allen key	1
12		POM ring	1
13		Riser body1	1
14		O-ring	3
15	JETFLF9006	Aerator housing	1
16		Aerator	1
17		Seal Washer	1
18	JETF0065	Pot filler handle pin	1
19		Pot filler handle cap	1
20		O-ring	1
21		M4 x 10 screw	1
22		Flat washer	1
23		Pot filler handle body	1
57		Circlip	1
24	JETFLF0064	Pot filler spindle	1
25		Pot filler outlet	1
26		O-ring	4
27		Ring	2
28		O-ring	3
29		Riser body2	1
30		Friction ring	1
31		O-ring	1
32	JETF0061	Trigger spray holder	1
33		Check Valve	1

No.	Code	Description	Qty
34		DN6 check valve	1
35		Check valve sleeve	1
36	GPJ0060	Spring	1
37		Spring cap washer	1
38		Spring cap	1
39	JETFLF0070	Hose	1
40	JETFLF0050W	Trigger spray	1
41		Wall bracket sleeve	1
42		Wall bracket rod	1
43	JETF0063	Wall bracket cover	1
44		Lock nut	1
45		O-ring	1
46		Brass olive	1
47		Fixing plate	1
48		Self-tapping screws	3
49		Wall plug	3
50	JETF0066	O-ring	1
51		Fixing washer	1
52		Fixing plate	1
53		Fixing stud	2
54		Fixing nut	2
55	JETFLF9002	Pex hose Hot	1
56		Pex hose Cold	1
58	JETF9007	Red fibre washer	1
60	JETF9009	SS spring washer	1
61		O-ring	2
62		Riser-mixer connection	1
63		O-ring	1



INSTALLATION INSTRUCTIONS

Important Note

The mixer must be installed to the requirements of AS/NZS 3500 by a qualified and licenced plumber. Your mixer comes to you already factory assembled and tested. We do not recommend the dismantling of any internal part of the mixer. The mixers are factory tested and sealed so as to give the best performance.

Installation Instructions

1. Please flush out new pipe work prior to connecting the new mixer.
2. All mixers should be installed with isolating stop cocks (Arco brand recommended).
3. This tap is suitable for high pressure applications where both hot and cold water supply pressures are at 150kPa or above.

1. Place the base o-ring (9) on the underside of the mixer body (8).
2. Screw in the hot and cold flexible connectors (57 & 58) to the mixer body (8).
3. Screw in the fixing bolt (55) into the mixer body (8) and tighten with a screw driver.
4. Place the mixer unit over the pre-punched tap hole in the sink. Feed the flexible connectors through first.
5. From underneath the sink or basin, slide on the U-shaped fixing washer (53), then the U-shaped fixing plate (54).
6. Screw on the long hex nut (56) until the mixer base is firmly fixed to the sink. Tighten with a socket set or tube spanner.
7. Connect the hot and cold flexible connectors to the inlet isolation valves. **The unit must be installed with the main mixer handle to the RIGHT side. If riser is disassembled from main body, product must be installed correctly.**
8. This product comes pre-assembled, if you wish to fit the main riser assembly into the mixer body by pushing the twin o-ring spigot downward, do not chipping the O ring then fit and tighten the allen key screw just firm (10) with the allen key provided (11). **Do not over-tighten.**

Note: the wall support bar (44) can be slid up or down to the desired height to enable fixing to the wall or splashback.

9. Ensuring the riser is 90 degrees to the wall, measure and cut the wall support bar to a length with a 2 to 5mm gap from the wall.

10. Slide on the chrome cover flange (45), nut (46), brass olive (48) & wall fixing plate (49) onto the wall support bar (44) as shown in exploded parts diagram.
11. Fit the o-ring (47) to the groove on the fixing wall plate.
12. Swing the wall support bar into position and mark the three holes for drilling into the wall.
13. Swing the wall support bar to the left or right to enable the three holes to be drilled.
14. For a masonry wall use the wall anchors provided (51) with screws (50).
15. For a timber backed wall use the screws provided (50).

Note: For a stainless steel splashback and/or cool room panel wall, ensure the fixing method used results in a solid fixing.

16. Swing the wall support bracket back into position, line up the holes and screw the fixing plate back to the wall. Tighten the nut and olive, ensuring a firm and solid installation. Slide the chrome cover plate over the wall plate.

Note: The brass M15 thread on the end of the end of the trigger spray hose swivels, so you do not have to spin the whole hose around when connecting the hose to the riser assembly.

17. Fit the flat washer (31) into the top of the riser assembly to ensure a water tight seal.
18. Slide the spring return back to expose the M15 connecting thread.

***To ensure longevity of the product we recommend Pressure reduction valves (PRV's) not pressure limiting valves (PLV's) set at 350kPa working pressure (hot/cold).**

19. Using the open ended spanner provided, screw the M15 end of the flexible hose into the top of the riser assembly. Do up firmly but do not over tighten. Support the weight of the hose and spring while tightening to prevent cross threading and kinking of the hose.
20. Slide the spring back over the end of the hose until it sits on top of the riser assembly.
21. Fit the washer (39) to the other end of the flexible hose.
22. Screw the trigger spray unit to the flexible hose. Tighten firmly using a spanner on the flat section of the loose nut.
23. Turn on the water and test the unit.

Operating Instructions

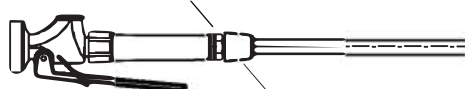
When not in use, the mixer should be turned off at the mixer cartridge so the unit is not under mains pressure when unsupervised.

The sticker supplied must be installed in a prominent position.

The hose must not be overextended, obstructed or bent forcibly.



Tighten using flats on trigger spray



Tighten using flats on the hose connector

There are two fixing methods to connect the trigger spray to the hose:

1. Using Teflon Tape

- Insert the white washer into the hose adaptor.
- Apply adequate Teflon tape to the male thread of the trigger spray.
- Screw hose connection on to trigger spray then tighten firmly against O ring Supplied on trigger)

2. Using Loxeal

- Insert the white teflon washer into the hose adaptor.
- Apply Loxeal to the male thread of the trigger spray.
- Screw hose connection on to trigger spray then tighten firmly against o ring. Test to ensure there are no leaks.

IMPORTANT INFORMATION

- The mixer can only be used on main pressure systems.
- The warranty is extended to the purchaser only and is not transferable.
- Misuse of the product is not covered by warranty.
- Use only suitable agents to clean the surface of your mixer i.e. no abrasive cleaners.
- If the incoming water pressure exceeds 500kPa, it is recommended that you install an approved pressure reduction valve (PRV).
- Approved operating temperature is not to exceed 80°C. Optimum operating temperature is 60°C.
- Minimum operating pressure is 150kPa.
- Maximum pressure is 500kPa, optimum working pressure is 350kPa.

Servicing and Cleaning

Manufacturer's recommendation is to service this product annually to ensure longevity of this product.

- Trigger Spray "O" ring kits (JETF0052)

Usage of soft moist cloth is highly recommended for cleaning purposes. Strong acids and bleaches must be avoided for cleaning purposes. Do not use abrasives or hard clothes. The product must be used at least once every week for proper functioning. Regularly clean off the accumulating dust particles in the nooks of the product to avoid any product failure.

REECE PRODUCT QUALITY GUARANTEE



You have purchased a quality product from Reece Australia Pty Ltd ABN 84 004 097 090 ("Reece"). This product is covered by a 5 year replacement product warranty and a 12 month warranty over spare parts and labour.

5 YEAR WARRANTY

This warranty covers faults in the product construction, material and assembly. Products which are within 5 years from the date of purchase, found upon inspection by an authorised Reece representative, to be defective in construction, material or assembly, will be repaired or exchanged with an equivalent product free of charge. Replaced items become Reece's property.

All replacement products will be available for collection without charge to the customer at the nearest Reece branch to the customer's location, or elsewhere as agreed between the customer and Reece.

Labour and Spare Parts

The labour for the replacement of products and spare parts to which this warranty applies will be supplied by Reece or relevant supplier using licensed plumbers engaged by Reece or relevant supplier within 1 year from the date of purchase. Spare parts other than those listed in the Manufacturer's Provisions above, which are within 1 year from the date of purchase found upon inspection by an authorised Reece representative to be defective in construction, material or assembly, will be replaced free of charge.

Warranty Conditions

This warranty will apply only under all of the following conditions:

- The item has been installed by a licensed plumber
- Failure is due to a fault in the manufacture of the product
- Proof of purchase (including the date of purchase) is provided
- The installation of the product is in accordance with the instructions provided

This warranty does not cover products purchased as an ex-display without being fully checked and tested for sale by the manufacturer.

This warranty does not include faults caused by:

- Unsuitable or improper use
- Incorrect installation or installation not in accordance with the instructions provided
- Installation or part installation by the purchaser or any person other than a LICENSED PLUMBER
- Normal wear and tear
- Inadequate or complete lack of maintenance
- Chemical, electrochemical or electrical influences
- Harsh detergents or abrasive cleaners used on product finishes

EXCLUSIONS

To the fullest extent permitted by law, Reece excludes all liability for damage or injury to any person, damage to any property, and any indirect consequential or other loss or damage.

CLAIM PROCEDURE

For all warranty queries customers are to contact the branch where the product was purchased. These details can be found on your purchase invoice.

Our goods come with guarantees that cannot be excluded under the Australian Consumer Law. You are entitled to a replacement or refund for a major failure and for compensation for any other reasonably foreseeable loss or damage. You are also entitled to have the goods repaired or replaced if the goods fail to be of acceptable quality and the failure does not amount to a major failure.

Don't risk it, use a licensed plumber.™

IF AFTER CHECKING THE
INSTALLATION INSTRUCTIONS
AND IMPORTANT
INFORMATION, THE PROBLEM
HAS NOT BEEN IDENTIFIED,
PLEASE CONTACT GENTEC
CUSTOMER SUPPORT ON:

+61 2 9319 4422 or
info@gentecaustralia.com.au



WOLFEN™

reece.com.au/wolfen