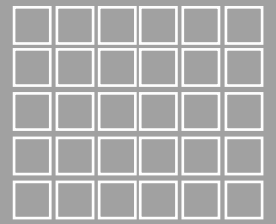
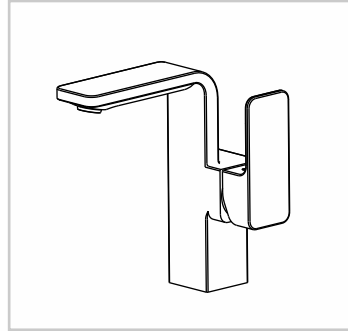


To ensure that your installation proceeds smoothly,  
please read this instructions carefully before you begin.

*American Standard*

## CYGNET

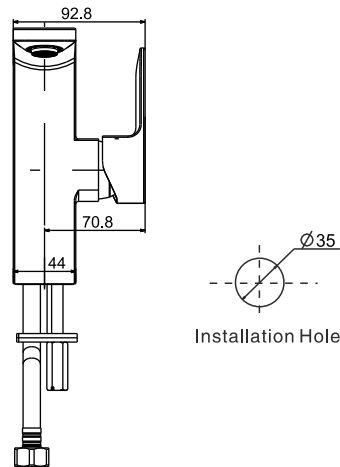
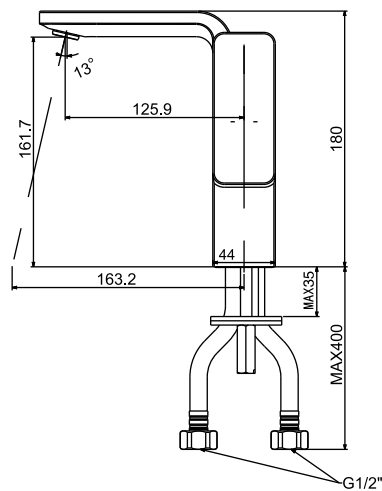
FFAS1305-102500ZNO  
CYGNET G/NECK BASIN MIXER CP (4\*)



Installation &  
Operation Instruction

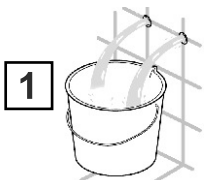
## Dimension

Unit: mm

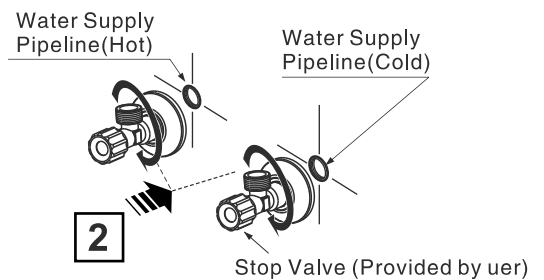


## Installation

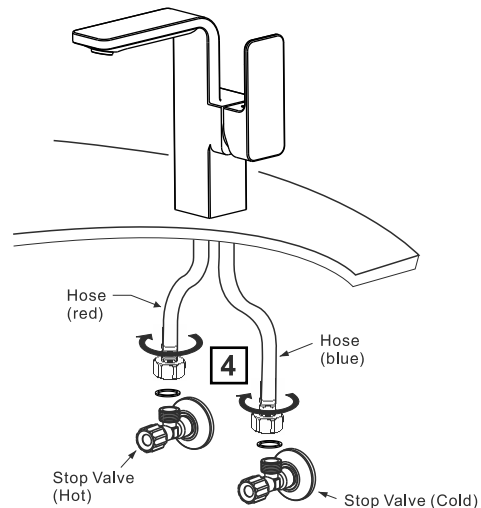
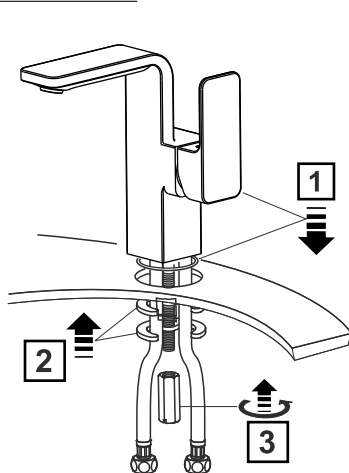
### 1 Preparation



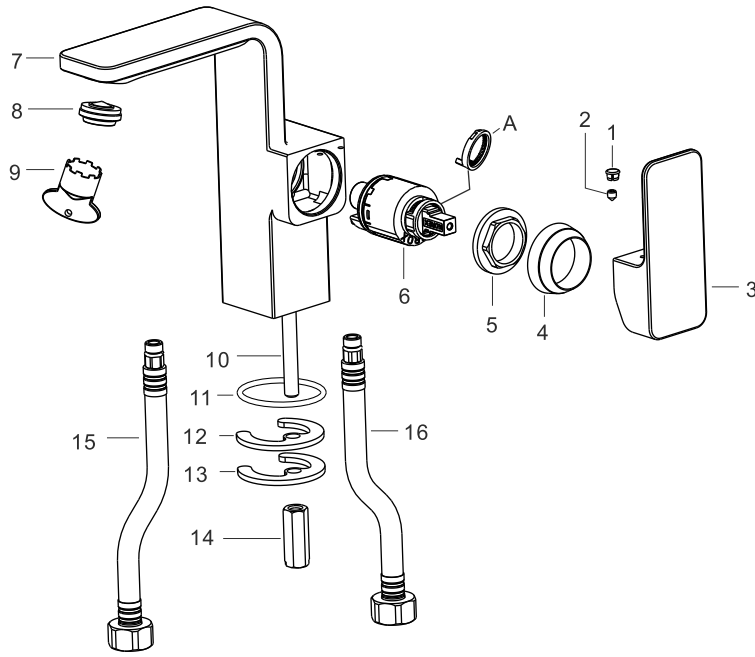
- \* Consult the dimension drawing and lay the pipes.
- \* Wash and clean the water supply pipeline.



### 2 Faucet Installation

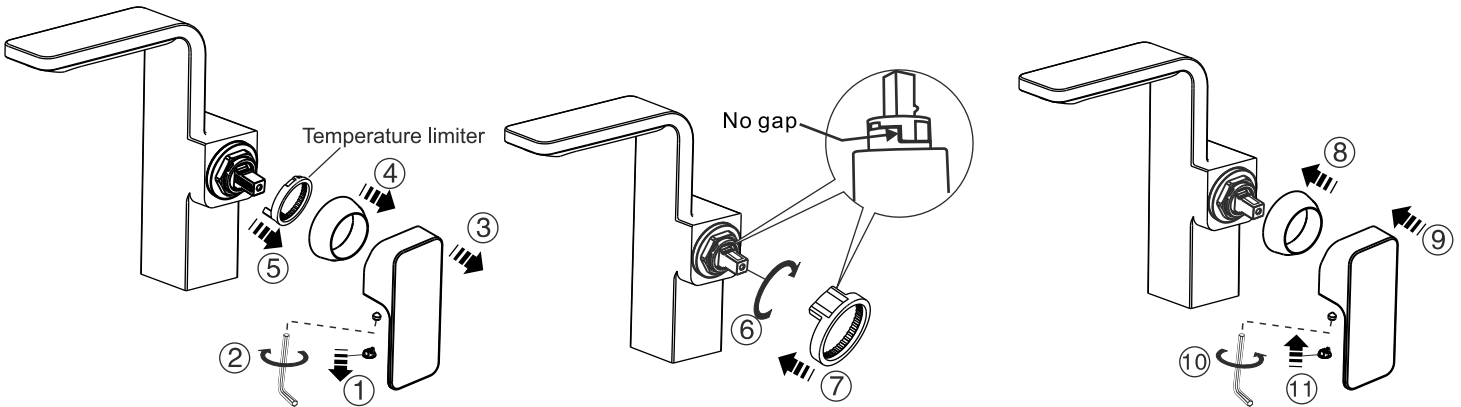


## Parts List



No.	Part Name	Q'ty
1	Index Button	1
2	Screw	1
3	Handle	1
4	Cap	1
5	Nut	1
6	Cartridge	1
7	Spout	1
8	Aerator	1
9	Aerator Wrench	1
10	Bushing	1
11	O-Ring	1
12	Washer	1
13	Washer	1
14	Nut	1
15	Hose ( red )	1
16	Hose ( blue )	1
A	Temperature limiter	1

## Operation instruction for temperature Limiter



\* Remove the handle and cover, you can see the cartridge.  
\* Take out the temperature limiter.

\* Move the pivot of cartridge to the position of you wanted hot water temperature. Reinstall the temperature limiter with no gap as shown in the figure above.

\* Intall cap and handle.

## Notice

- \* Remove all impurity in pipes before beginning to avoid clogging. Connect faucet pipes correctly.
- \* Check installation distances in the Dimension diagram to ensure correct installation.
- \* When in the process of installation, Please grab the body. Do not grab handle only.

### Conditions for use

- \* Recommended water pressure condition: 0.1~0.5Mpa.
- \* Environment Temperature: 1~55°C
- \* Water temperature: 4 ~ 90°C, Recommended hot water temperature 55°C ~ 65°C
- \* Steam is not allowed to use.
- \* The cold and hot water pipes must not be reserved.

**AUS**

Reece Australia Pty Ltd  
118 Burwood Hwy  
Burwood VIC 3125

Tel.: 1800 080 055  
Email: [customercare@reece.com.au](mailto:customercare@reece.com.au)



**NZ**

Robertson  
25 Vestey Drive  
Mt Wellington, Auckland

Tel.: +64 9 5730490  
Email: [sales@robertson.co.nz](mailto:sales@robertson.co.nz)