

# FORMA WALL HUNG BASIN INSTALLATION INSTRUCTIONS

## PLEASE READ CAREFULLY BEFORE INSTALLATION

### IMPORTANT

Provide suitable reinforcement behind finished wall for the basin D.200 Fixing Kit at the fixing height position.

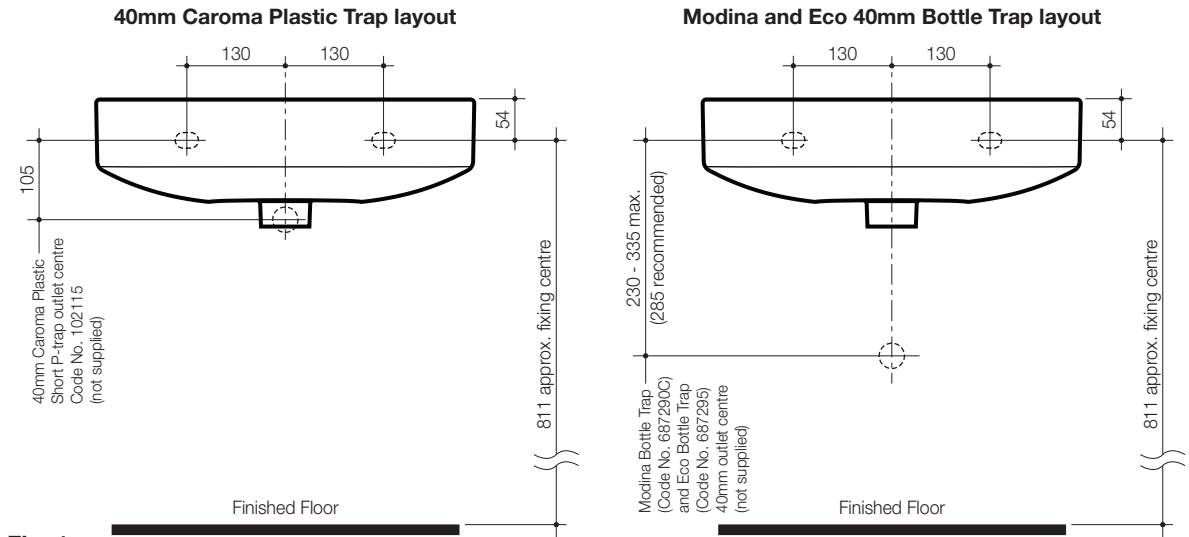
### Roughing in for D.200 Basin Fixing Kit:

For timber stud walls, nogginns and studs must be positioned at a height to allow for the location of fasteners as detailed in **Fig. 1**.

### BASIN INSTALLATION WITH D.200 BASIN FIXING KIT

- 1- Mark Fixing Screw hole position on finished wall at the recommended height as detailed in **Fig. 1**.
- 2- Drill two Ø12mm holes in masonry wall for Expansion Fasteners. For timber stud walls drill two Ø8mm holes for Fixing Screws.
- 3- Insert Expansion Fasteners into the drilled holes in masonry wall. The Fixing Screws should be screwed into the wall using the flat section of the Fixing Screw with a spanner as shown in **Fig. 2**. Allow 48 mm of thread to protrude from the finished wall.
- 4- Locate basin onto the Fixing Screws on the wall. Insert Plastic Bushes, Washers and fasten to wall with Fixing Nut to complete assembly as detailed in **Fig. 3**.
- 5- The Plastic Bush allows for leveling adjustment if required by rotating the hexagonal head bush, the basin will be slightly raised or lowered as shown in **Fig. 3**.
- 6- Fit taps and waste assembly to the basin.
- 7- Tighten Fixing Nuts and connect plumbing to complete the installation.

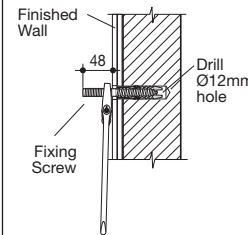
### D.200 Basin Fixing Kit



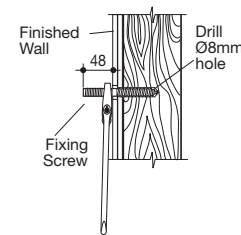
**Fig. 1**

### IMPORTANT:

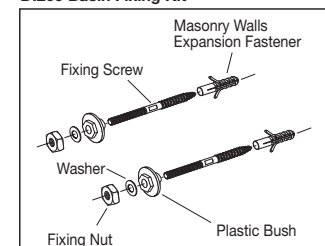
#### Fixing Screw Masonry Walls Installation



#### Fixing Screw Timber Stud Walls Installation

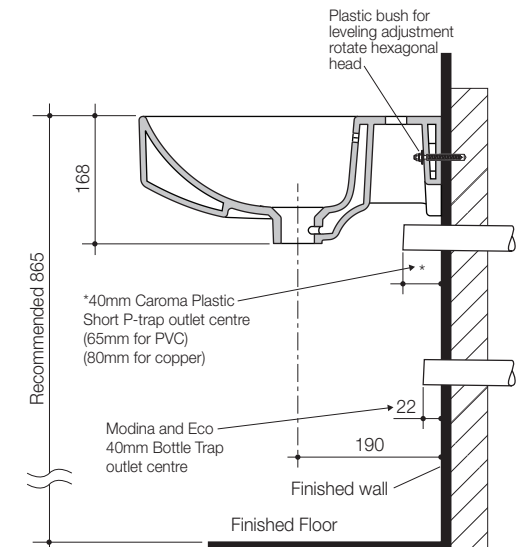


#### D.200 Basin Fixing Kit



**Fig. 2**

### D.200 Basin Fixing Kit Completed Installation



**Fig. 3**