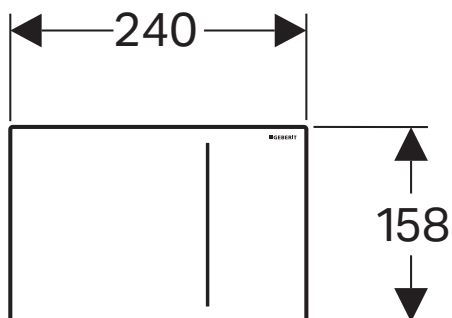


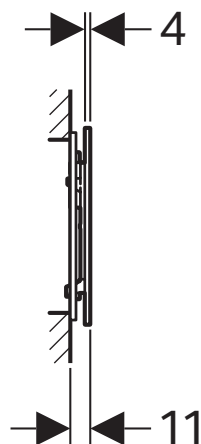
■ GEBERIT

SIGMA70 PNEUMATIC BUTTON

ACCESS PLATE



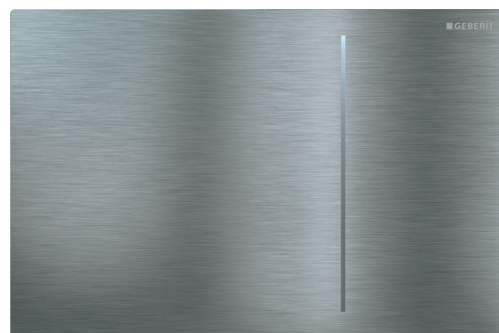
Dimensions are nominal measurements only.



Sigma8 front press, service through the button.

SPECIFICATIONS

| | |
|----------------------------|---|
| Recommended use | Domestic, hotel and commercial |
| Material | Metal and Glass |
| Colour Availability | Brushed SS, White Glass, Black Glass Satin Black |
| Application | Dual-flush Access Plate |
| Compatibility | Sigma8 Cistern |
| Operation | Front press in wall |
| Working Pressure | 100-500 kPa |
| Actuation Force | < 10N |
| Spare Parts | Guarantee of availability for 25 years |
| Technical Support | 1800 Geberit |



To see the complete GEBERIT range go to
www.reece.com.au/bathrooms



| | |
|-----------------|---------|
| D/F Brushed SS | 1811559 |
| D/F White glass | 1811560 |
| D/F Black glass | 1811561 |
| D/F Matt Black | 1811575 |

CLEANING INSTRUCTIONS

You have selected a Geberit product with a high-grade surface. Please follow the cleaning instructions so that your Geberit product will give you many years of pleasure.

Never use aggressive cleaners that contain chlorine, are acidic, abrasive or corrosive.

Only use water and a mild cleaning agent.

1. Clean the unit with a soft cloth soaked in water.
2. Dry with a soft cloth.

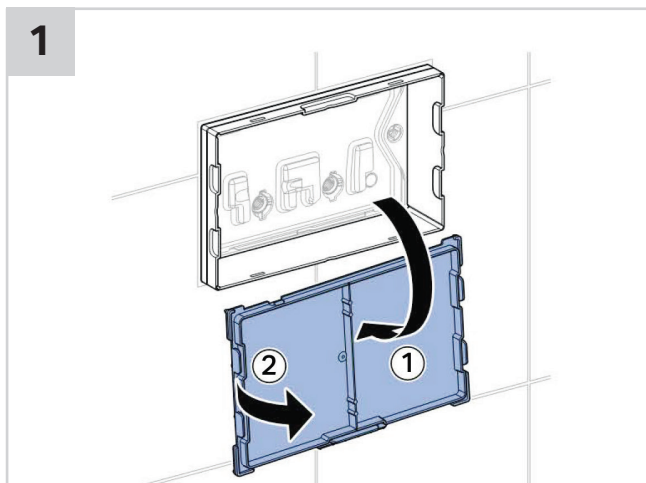
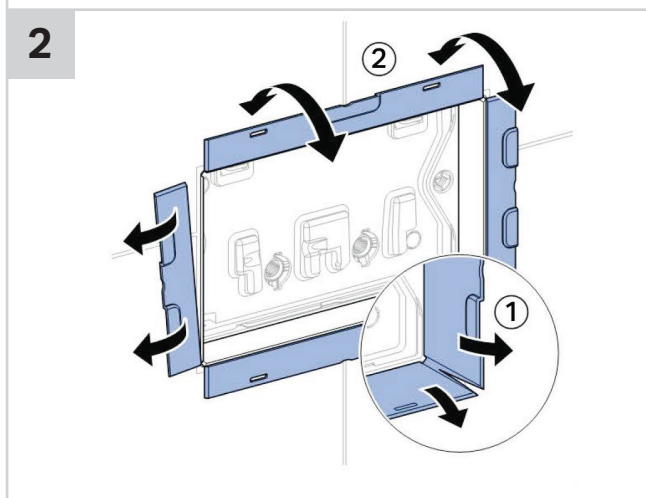
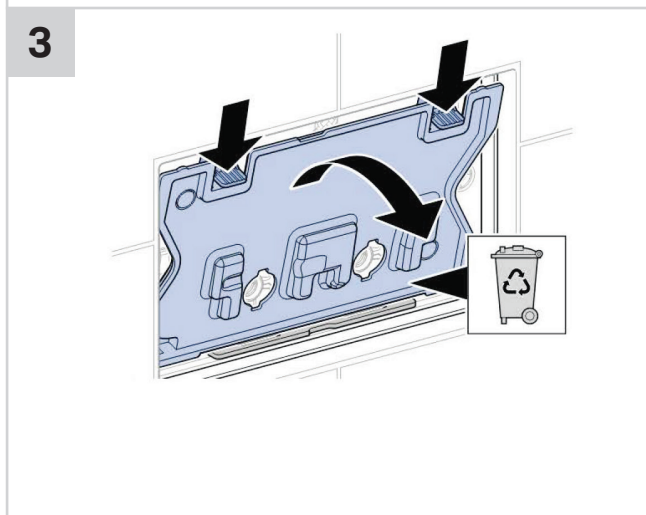
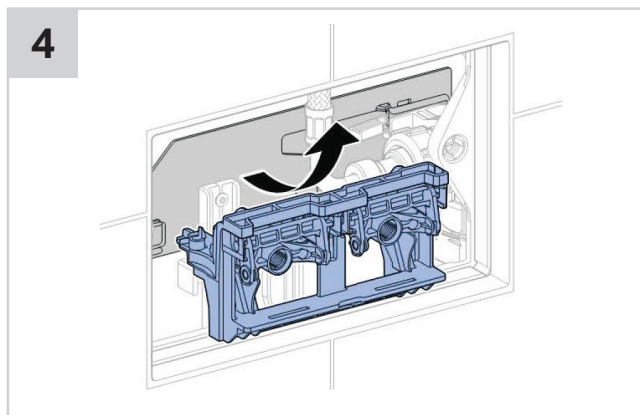
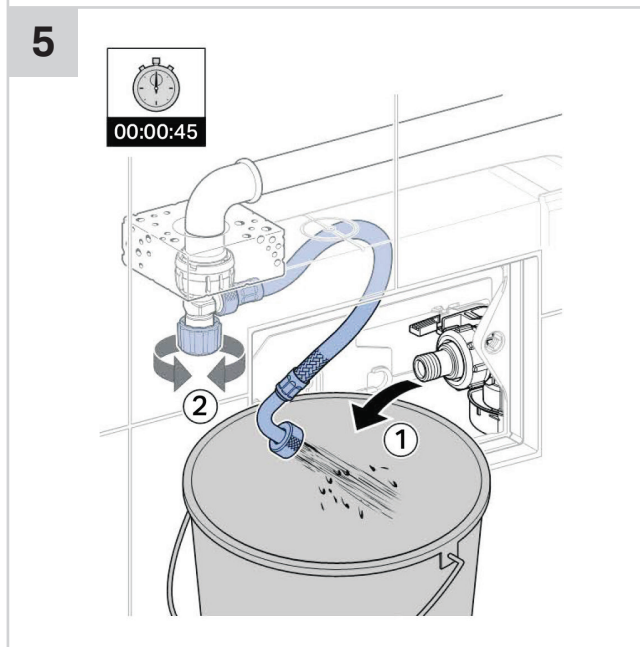
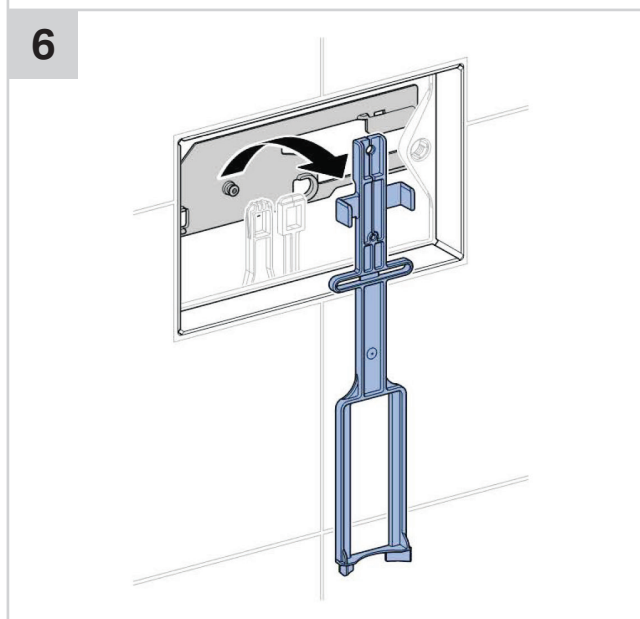
Damage caused by any improper treatment is not covered by the product warranty. Refer to warranty Conditions.

Disclaimer: Products in this specification manual must by regulation be installed by licensed and registered trade people. The manufacturer/distributor reserves the right to vary specifications or delete models from their range without prior notification. Dimensions are nominal measurements only. Dimensions and set-outs listed are correct at time of publication however the manufacturer/distributor takes no responsibility for printing errors.

Tech Page – Version 1

■ GEBERIT **SIGMA70 PNEUMATIC BUTTON/ACCESS PLATE**

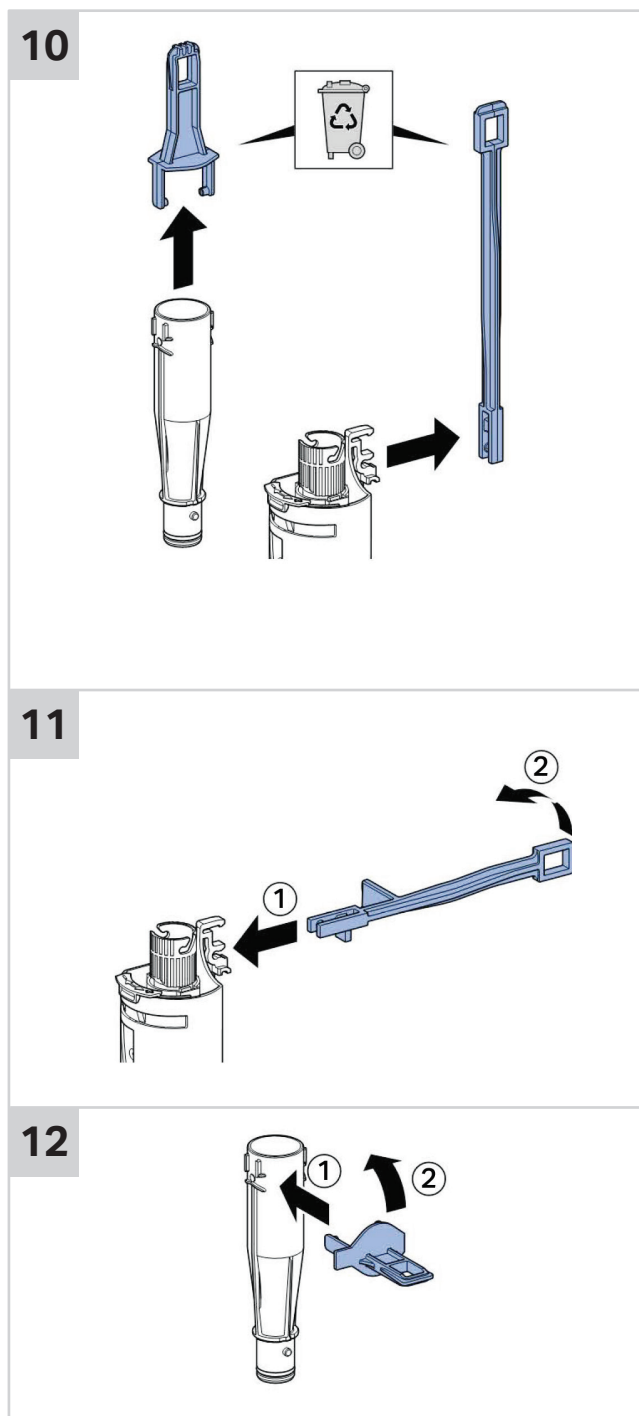
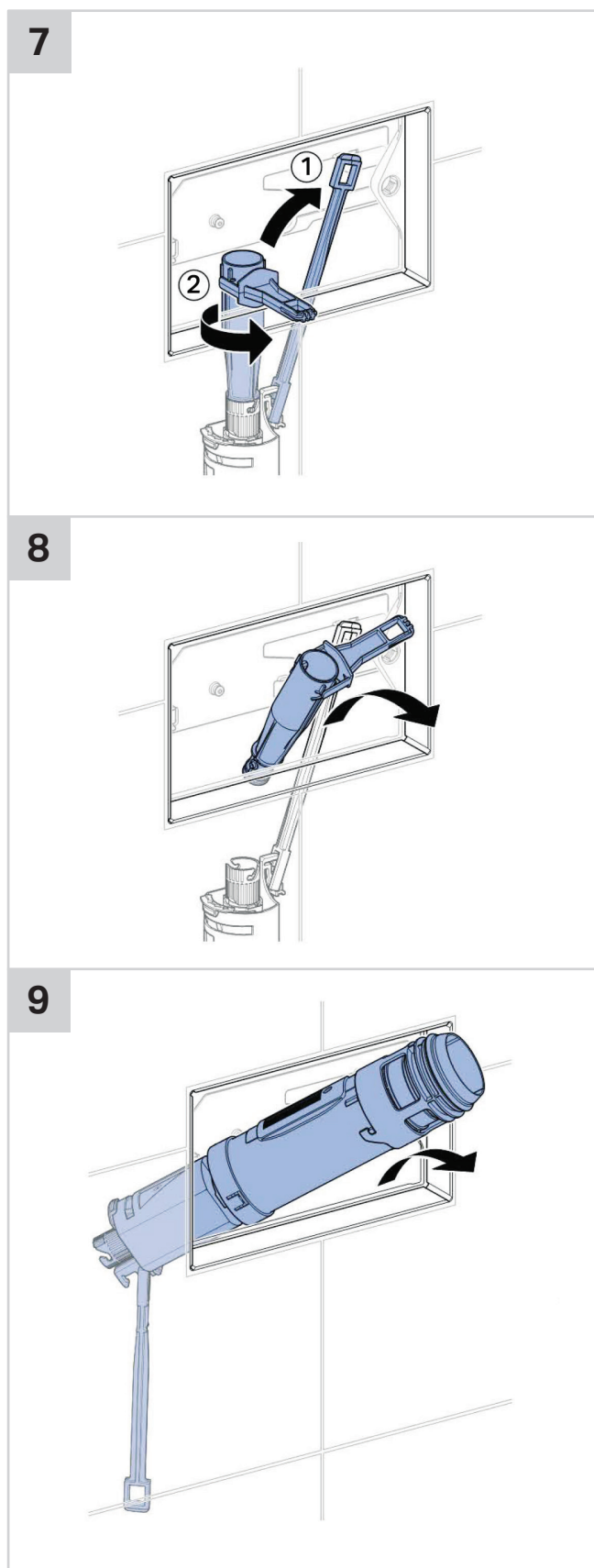
INSTALLATION INSTRUCTIONS

1

2

3

4

5

6


Plumbers, please ensure a copy of the installation instructions is left with the end user for future reference

■ GEBERIT **SIGMA70 PNEUMATIC BUTTON/ACCESS PLATE**

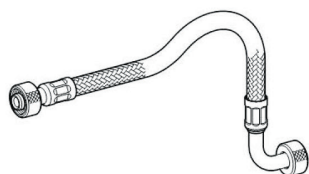
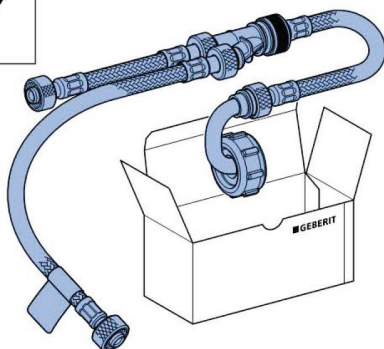
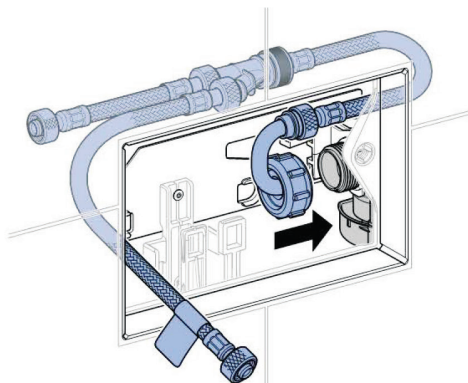
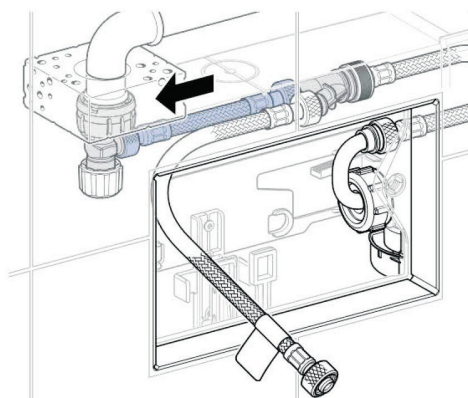
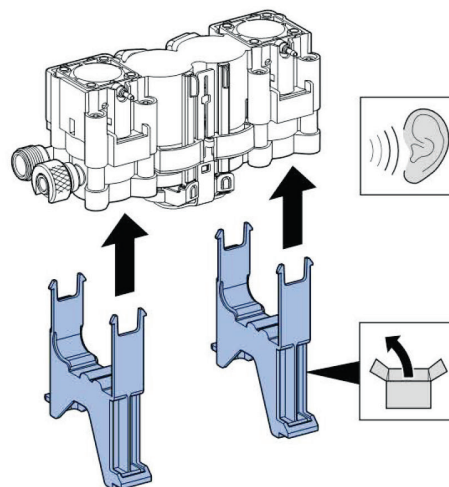
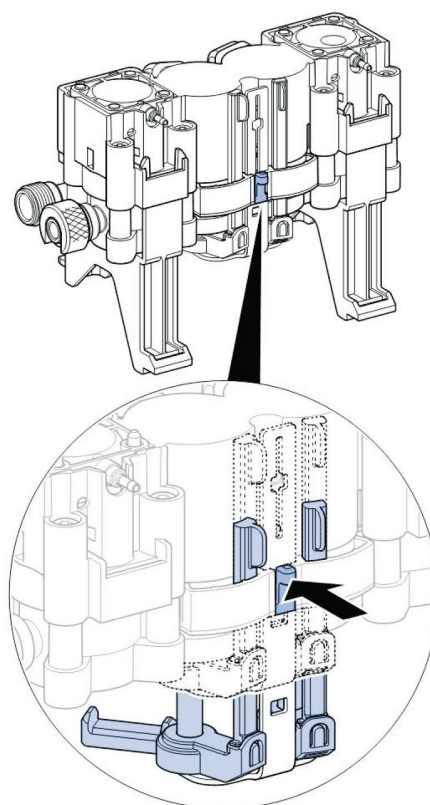
INSTALLATION INSTRUCTIONS



Plumbers, please ensure a copy of the installation instructions is left with the end user for future reference

■ GEBERIT **SIGMA70 PNEUMATIC BUTTON/ACCESS PLATE**

INSTALLATION INSTRUCTIONS

2
i

1

2

3

5


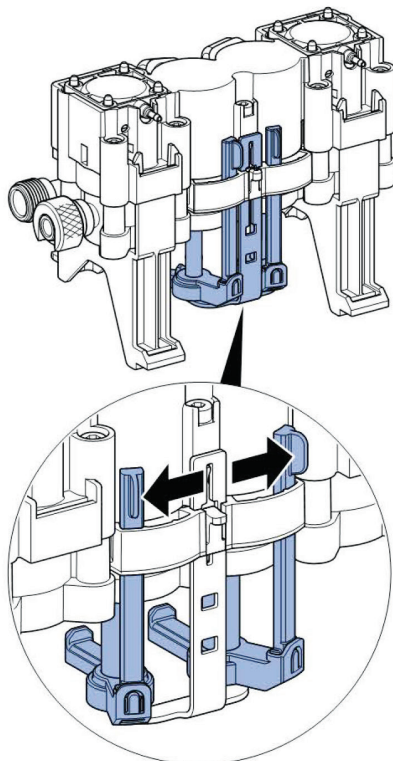
Plumbers, please ensure a copy of the installation instructions is left with the end user for future reference

■ GEBERIT

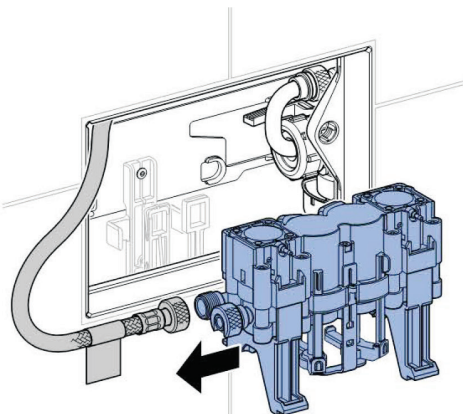
SIGMA70 PNEUMATIC BUTTON/ACCESS PLATE

INSTALLATION INSTRUCTIONS

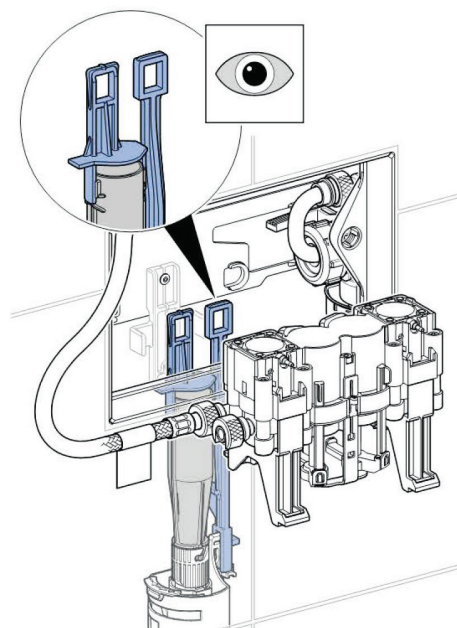
5



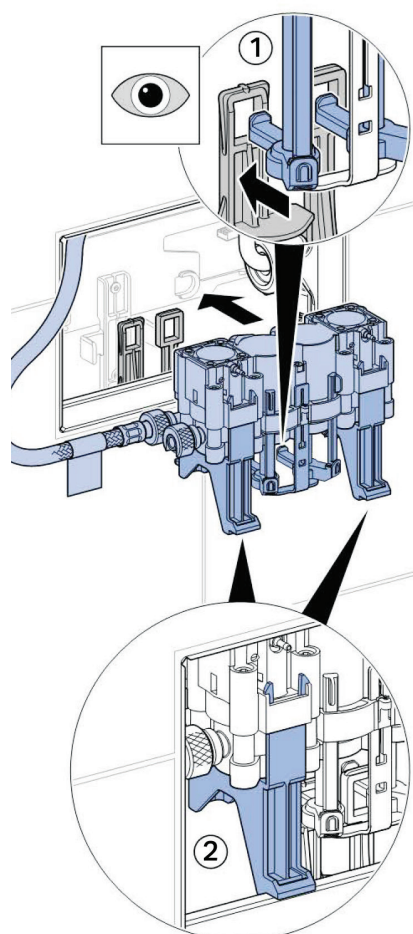
6



7



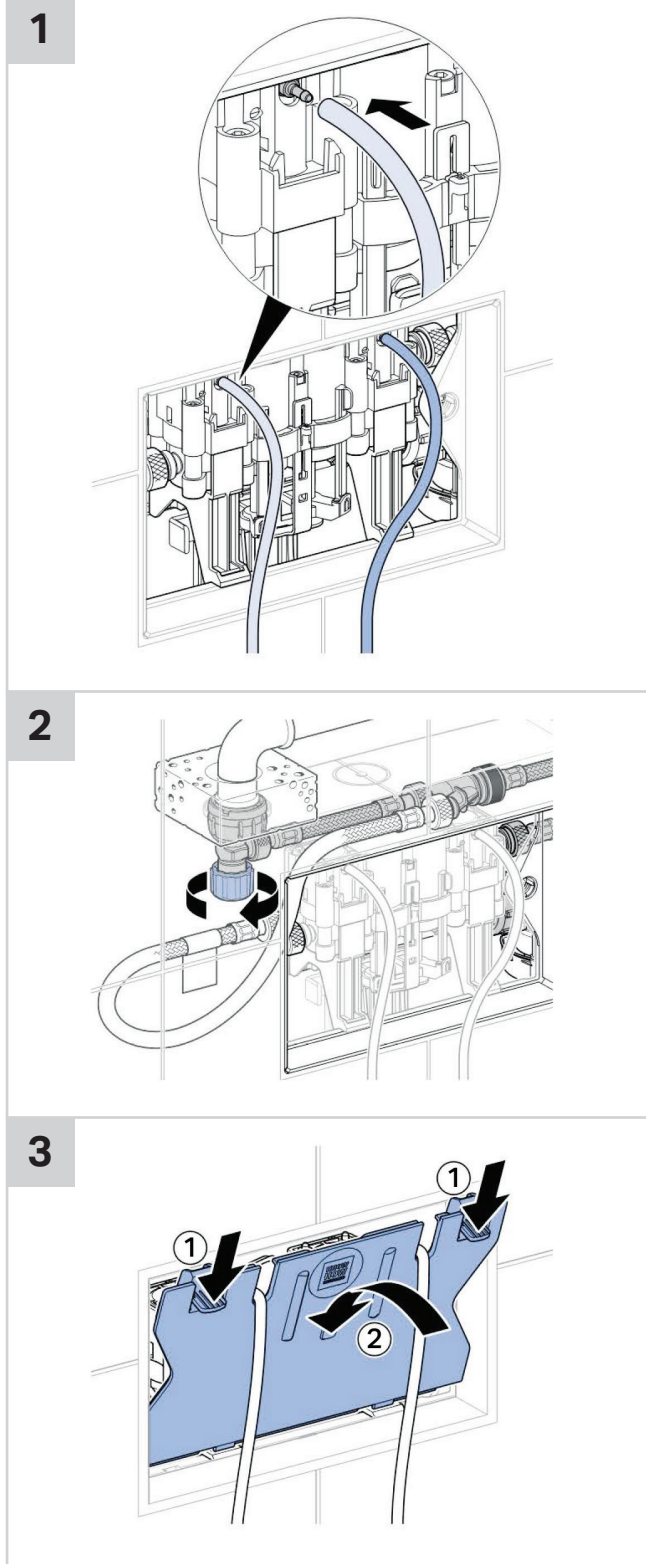
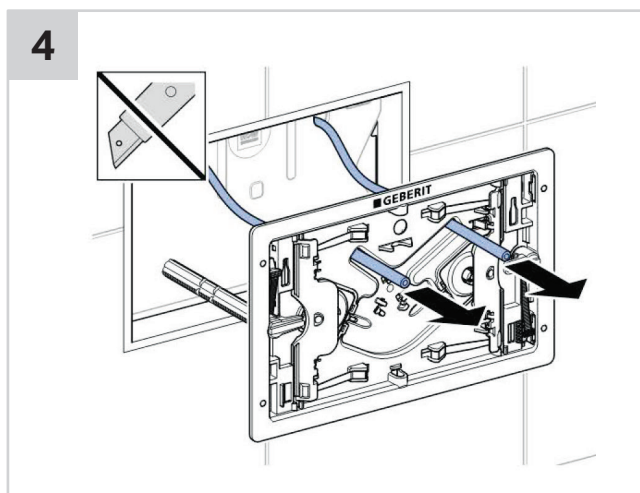
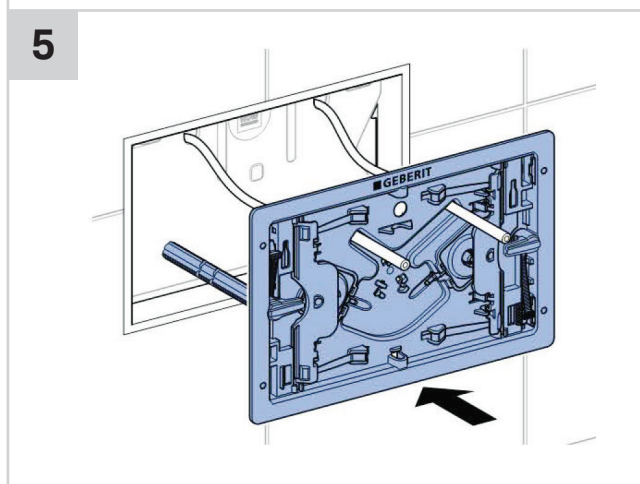
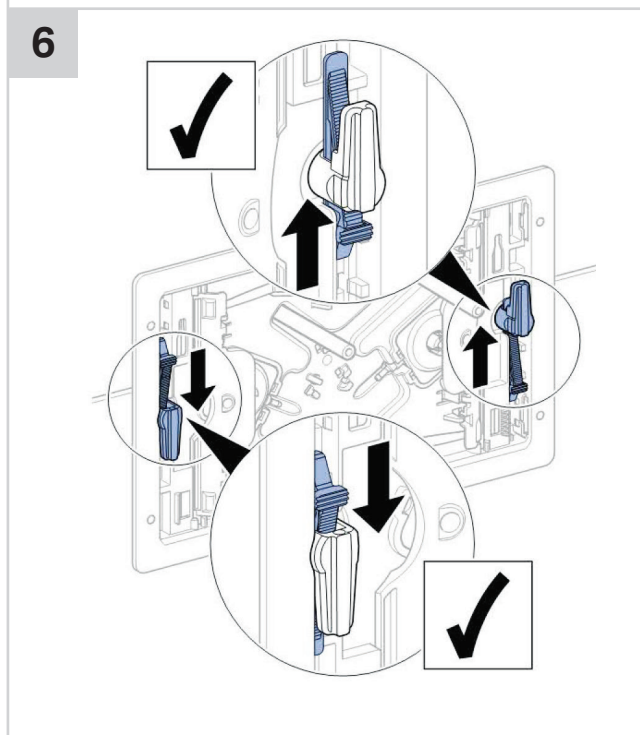
8



Plumbers, please ensure a copy of the installation instructions is left with the end user for future reference

■ GEBERIT **SIGMA70 PNEUMATIC BUTTON/ACCESS PLATE**

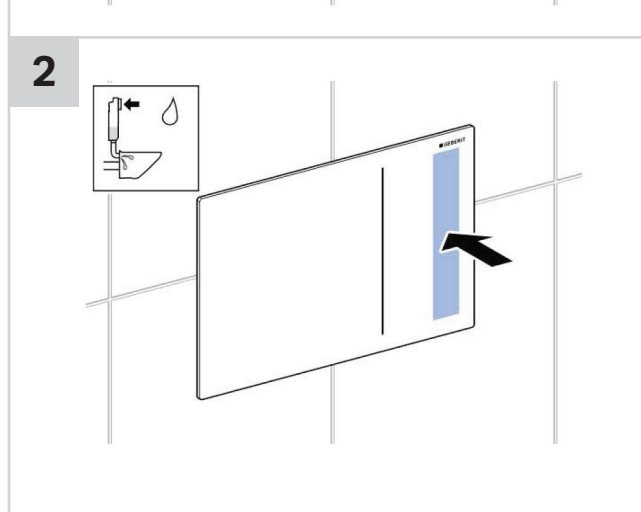
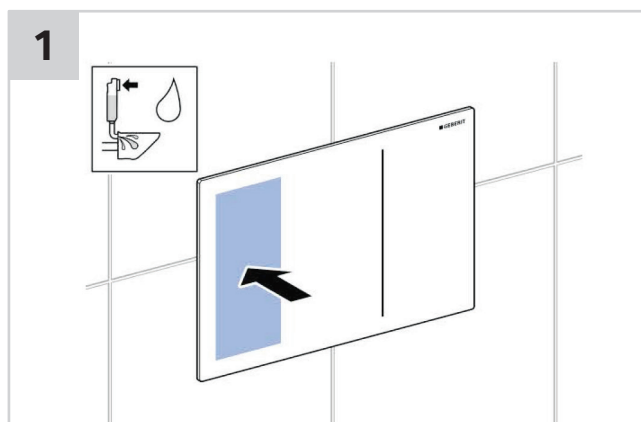
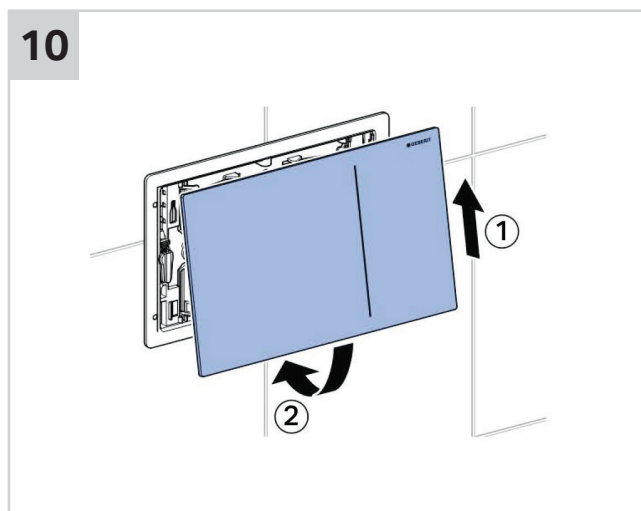
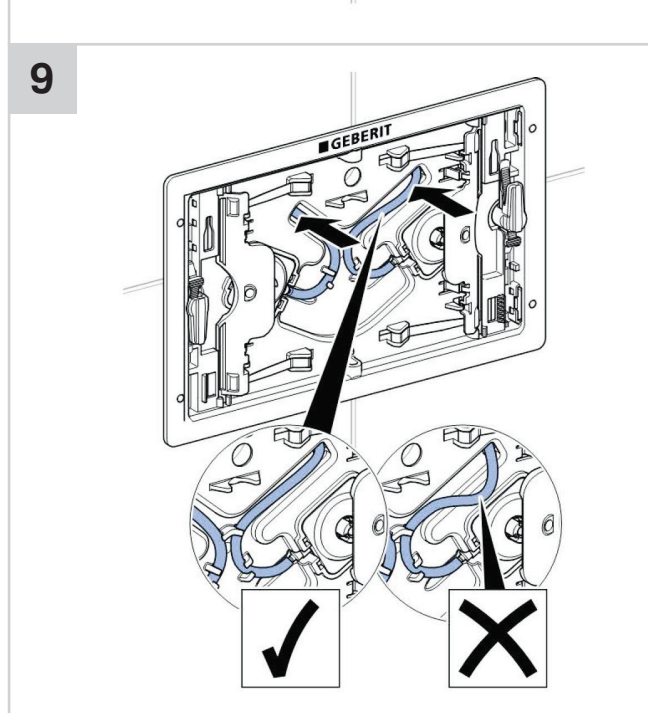
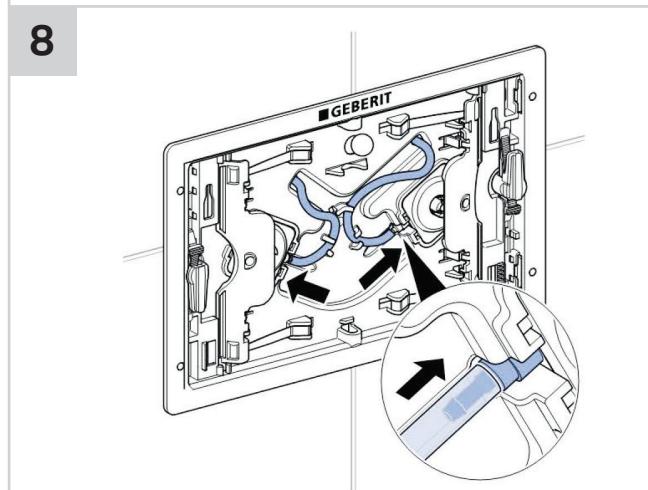
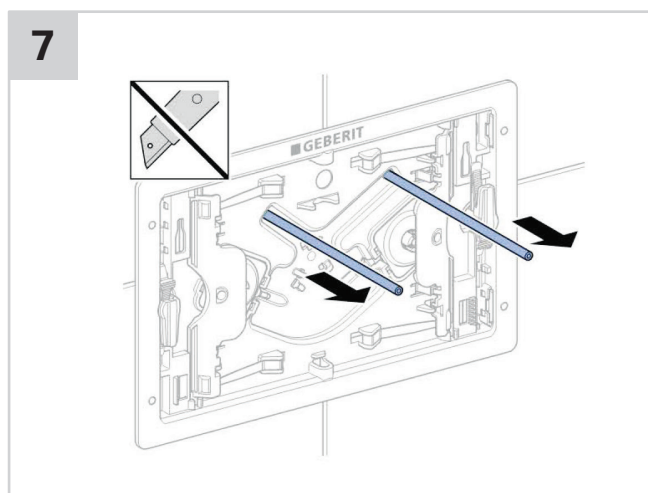
INSTALLATION INSTRUCTIONS

3

4

5

6


Plumbers, please ensure a copy of the installation instructions is left with the end user for future reference

■ GEBERIT **SIGMA70 PNEUMATIC BUTTON/ACCESS PLATE**

INSTALLATION INSTRUCTIONS



Plumbers, please ensure a copy of the installation instructions is left with the end user for future reference