

NEW PRODUCT



FDUA140VH | FDU A160VH SPLITTABLE DUCTED INDOOR UNIT

- INDOOR UNIT SEPARATES INTO TWO SECTIONS FOR EASIER HANDLING INTO THE ROOF SPACE
- UP TO 1,000 l/s AIRFLOW
- UP TO 150Pa EXTERNAL STATIC PRESSURE
- BUILT-IN DRAIN PUMP
- AVAILABLE IN BOTH R410A AND R32
- RETURN AIR CONNECTION CAN BE CONVERTED FROM REAR TO TOP
- RETURN AIR CONNECTION IS VIA 2 X OVAL SPIGOTS FOR 2 X Ø400mm FLEXIBLE DUCTS

*RC-EXZ3A controller and MH-4ZRM required

mhiaa.com.au | 1300 138 007

Mitsubishi Heavy Industries Air-Conditioners Australia, Pty. Ltd.

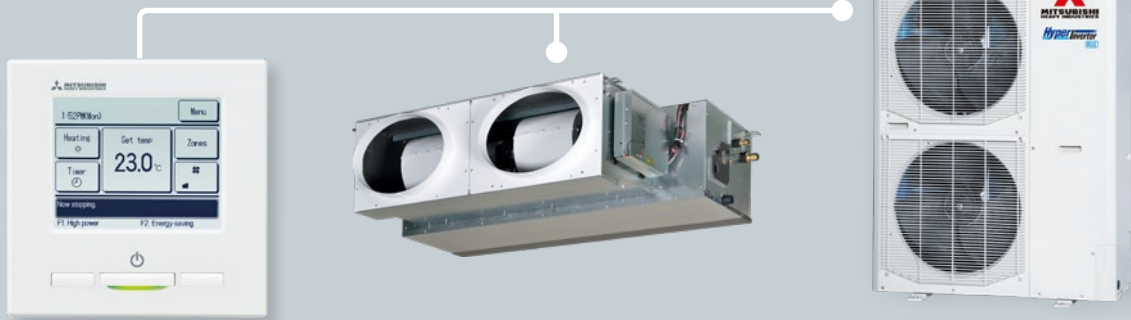


AIR CONDITIONING

FDUA140VH | FDU A160VH

SPLITTABLE DUCTED INDOOR UNIT

REVERSE
CYCLE



14.0kW | 16.0kW

HIGH STATIC PRESSURE

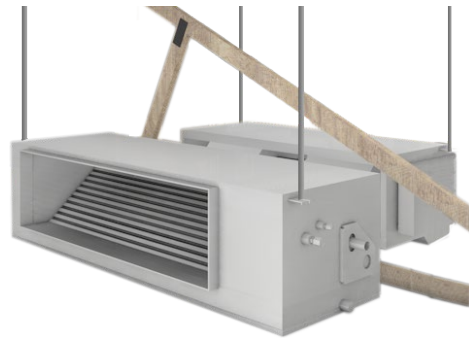
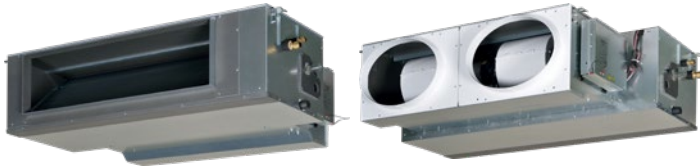
SINGLE PHASE MODEL (14.0KW)
THREE PHASE MODELS (14.0KW and 16.0KW)

SPLITTABLE INDOOR UNIT

A unique design allows the fan deck and heat exchanger to be separated for easier handling during installation.

FRONT (SUPPLY AIR)

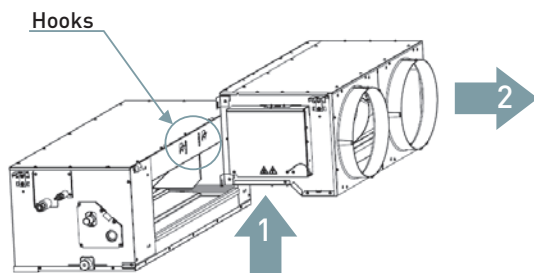
BACK (RETURN AIR)



Note: Unit must be reassembled prior to operation*

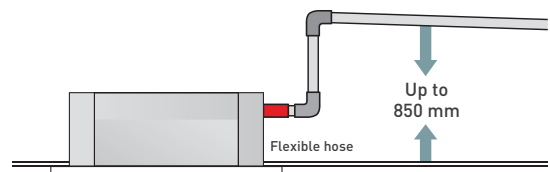
EASY SEPARATION

Fan deck assembly and heat exchanger are designed to easily separate and come back together. Return air connection can also be converted to allow suction from the back to the top of the unit.



BUILT-IN DRAIN PUMP

A built-in drain pump with a lift of 850mm allows greater flexibility during installation.



mhiaa.com.au | 1300 138 007

Mitsubishi Heavy Industries Air-Conditioners Australia, Pty. Ltd.

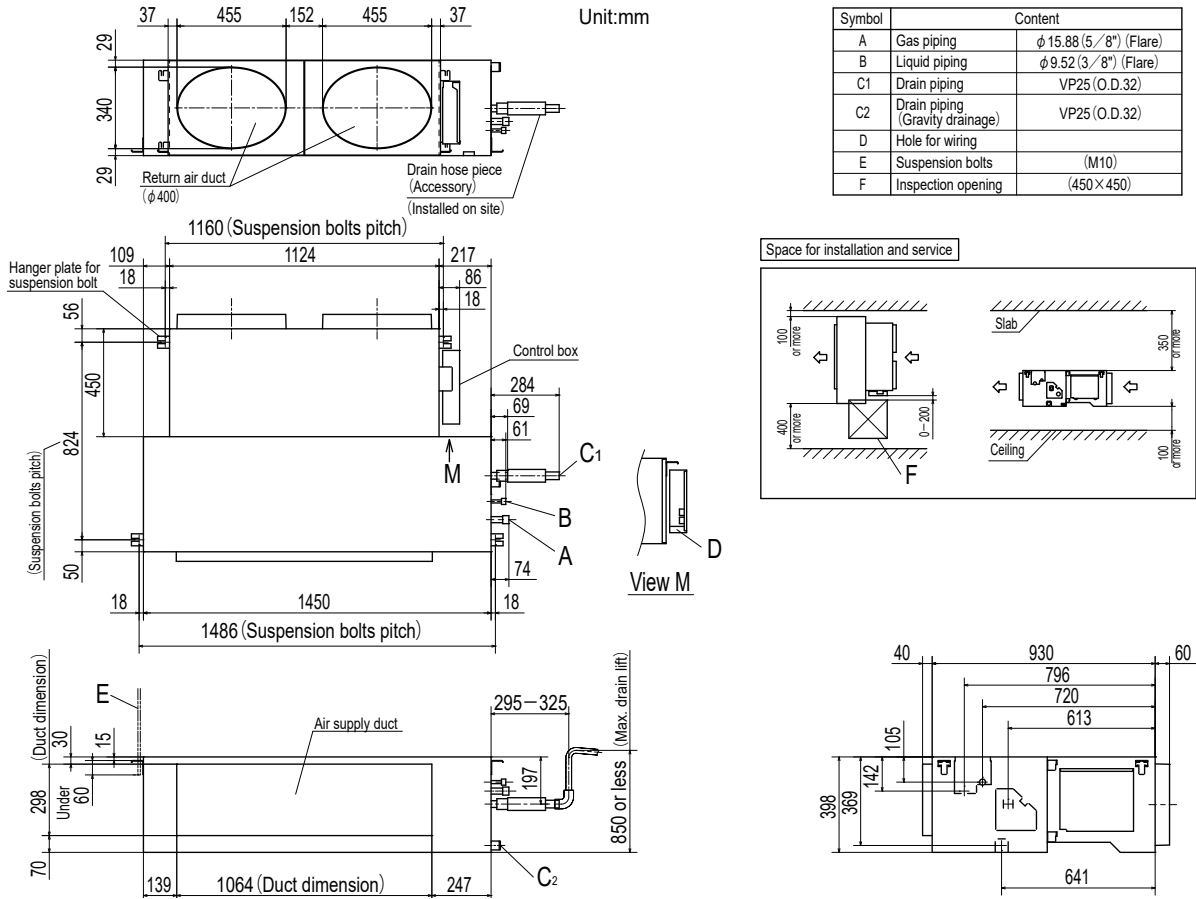


AIR CONDITIONING

FDUA140VH | FDUA160VH

SPLITTABLE DUCTED INDOOR UNIT

Model FDUA140VH, 160VH



Symbol	Content
A	Gas piping φ15.88 (5/8") (Flare)
B	Liquid piping φ9.52 (3/8") (Flare)
C1	Drain piping VP25 (O.D.32)
C2	Drain piping (Gravity drainage) VP25 (O.D.32)
D	Hole for wiring
E	Suspension bolts (M10)
F	Inspection opening (450×450)

Return air duct dimension = 2 x oval spigots for 2 x Ø400 mm Flexible ducts
Supply air duct dimension = 1064mm x 298mm for hard duct.

System		FDUA140AVNXVH	FDUA140AVNXVWH	FDUA140AVSXVH	FDUA140AVSXVWH	FDUA160AVSAVH	FDUA160AVSAVWH
Indoor unit		FDUA140VH	FDUA140VH	FDUA140VH	FDUA140VH	FDUA160VH	FDUA160VH
Outdoor unit		FDCA140VNX	FDCA140VNX-W	FDCA140VSX	FDCA140VSX-W	FDCA160VSA	FDCA160VSA-W
Power source (Outdoor Unit)		1 Phase 240V 50Hz			3 Phase 380-415V 50Hz		
Control Options		Wired: RC-EXZ3A, RCH-E3, RC-E5 Wireless: RCN-KIT4-E2. Wi-Fi*: MH-RC-WIFI-1B					
Rated Capacity Cool/Heat		kW	14.0 / 16.0	14.0 / 16.0	14.0 / 16.0	14.0 / 16.0	16.0 / 18.0
Weight	Indoor	kg	66	66	66	66	66
	Outdoor	kg	106	97	106	99	143
External Dimensions (HxWxD)	Indoor	mm	398x1450x930	398x1450x930	398x1450x930	398x1450x930	398x1450x930
	Outdoor	mm	1300x970x370	1300x970x370	1300x970x370	1300x970x370	1505x970x370
Refrigerant Piping	Liquid Line	mm	Ø9.52	Ø9.52	Ø9.52	Ø9.52	Ø12.7
	Gas Line	mm	Ø15.88	Ø15.88	Ø15.88	Ø15.88	Ø22.22 , Ø25.4 or Ø28.58
Refrigerant	Precharged	m	30	30	30	30	30
	Quantity	kg	(R410A) 4.5	(R32) 4.0	(R410A) 4.5	(R32) 4.0	(R410A) 7.2
Max Pipe Length		m	100	100	100	100	**70

* Individual Zone on/off function unavailable
**Maximum 70m (Gas piping:Ø25.4 or Ø28.58), Maximum 35m (Gas piping:Ø22.22)

