



Dura Lead Free Brass Water Ball Valve F&F 15-50mm

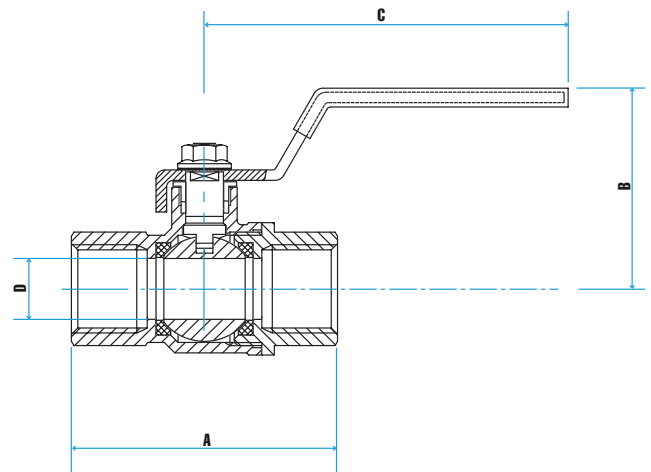
SPECIFICATIONS

Recommended use	Suitable for in-line isolation in a pipeline. Must be operated in fully open or closed position.
Features	Quarter Turn Operation w/- Lever Handle Full Bore Chromed Plated Ball PTFE Seats Both Ends
Working Pressure	2000 kPa at 90°C 1500 kPa at 100°C
Temperature Range	-20°C to +100°C
Warranty	12 Months
Standards	Female sealing threads to AS/ISO 7.1 series Rp
Watermark	WM-00683 to WMTS012



COMPONENTS

End Cap	Lead Free Brass
Seal Ring	PTFE
Body	Lead Free Brass
Ball	Chrome Plated DR Brass
Spindle	Lead Free Brass
Packing	PTFE
Packing Nut	DR Brass
Handle	SS 304
Nut	SS 304



DIMENSIONS

Product Codes	Product Description	Size	A	B	C	D
		DN	mm	mm	mm	mm
1009522	Dura LF Brass Water Ball Valve F&F 15mm	15	58.5	49.5	85	14
1009523	Dura LF Brass Water Ball Valve F&F 20mm	20	68	56	113	19
1009524	Dura LF Brass Water Ball Valve F&F 25mm	25	80	60	113	24
1009525	Dura LF Brass Water Ball Valve F&F 32mm	32	94.5	67	130	30
1009526	Dura LF Brass Water Ball Valve F&F 40mm	40	104	78	155	38
1009527	Dura LF Brass Water Ball Valve F&F 50mm	50	125	83	155	47

Dimensions are nominal measurements only.

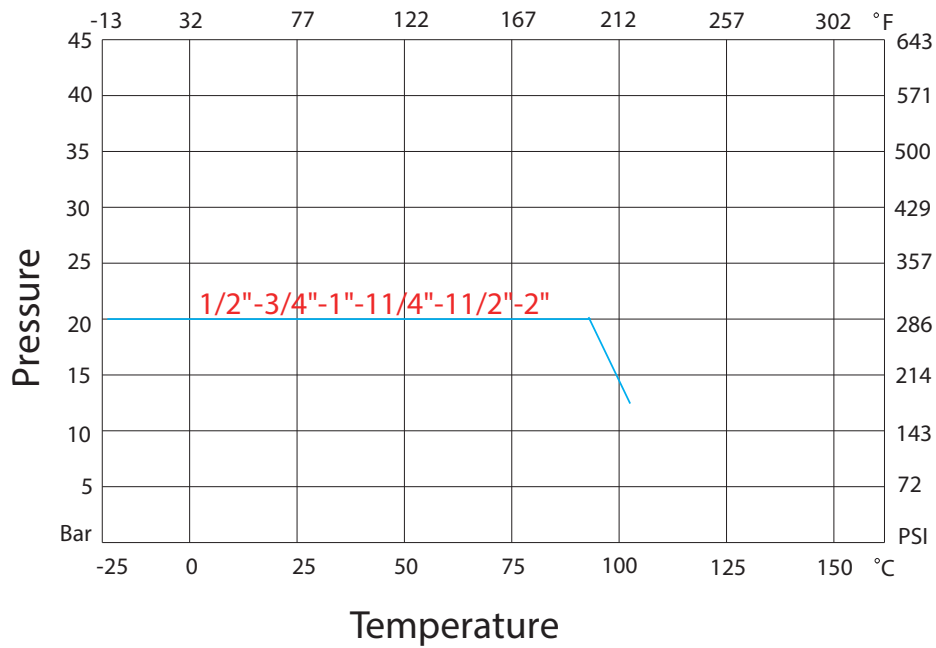
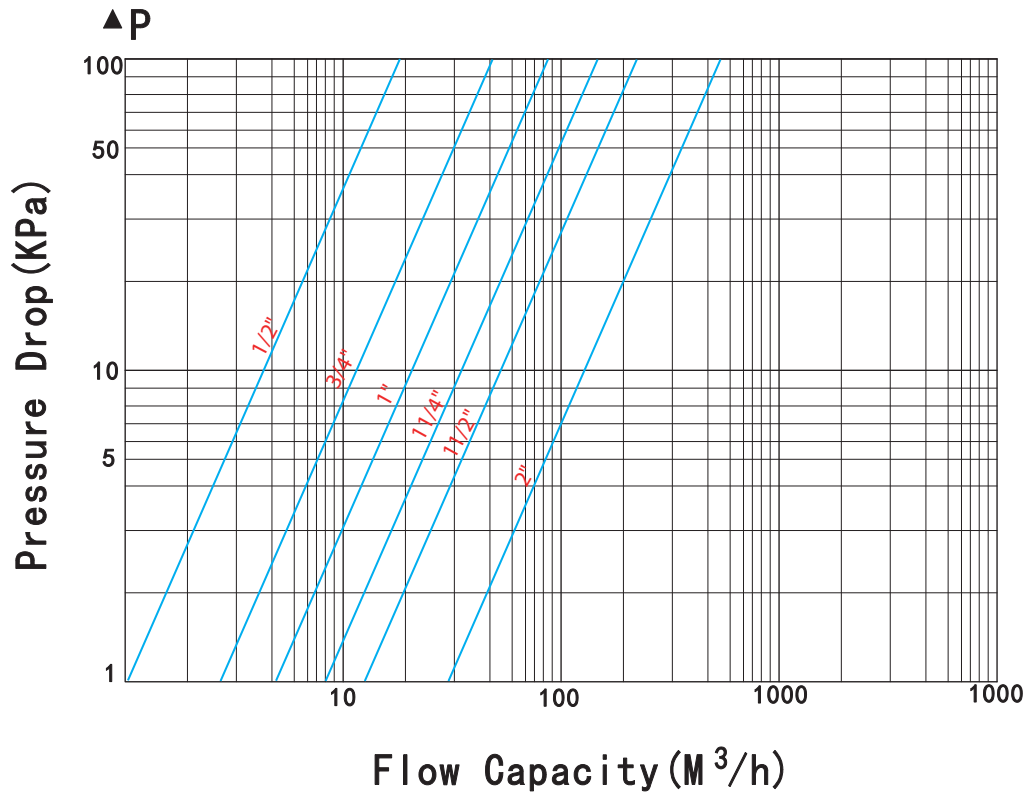
Disclaimer: Products in this specification manual must by regulation be installed by licensed and registered trade people. The manufacturer/distributor reserves the right to vary specifications or delete models from their range without prior notification. Dimensions are nominal measurements only. Dimensions and set-outs listed are correct at time of publication however the manufacturer/distributor takes no responsibility for printing errors.

Published 18/06/25





Dura Lead Free Brass Water Ball Valve F&F 15-50mm



Dimensions are nominal measurements only.

Disclaimer: Products in this specification manual must by regulation be installed by licensed and registered trade people. The manufacturer/distributor reserves the right to vary specifications or delete models from their range without prior notification. Dimensions are nominal measurements only. Dimensions and set-outs listed are correct at time of publication however the manufacturer/distributor takes no responsibility for printing errors.

Published 18/06/25

