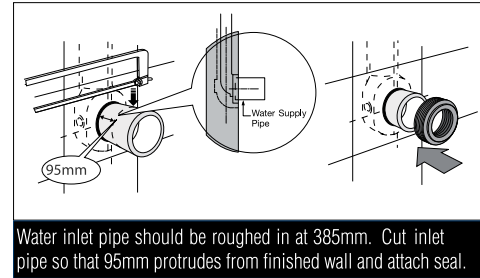
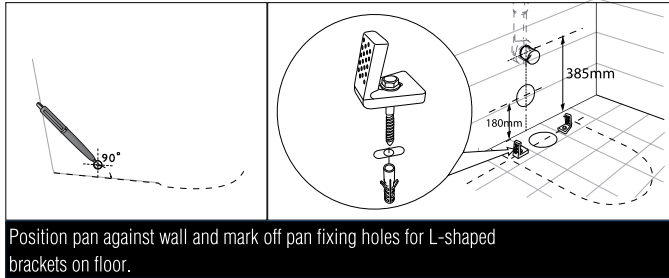


KADO

Lux Rimless Plus Back to Wall Overheight Pan (4 Star)

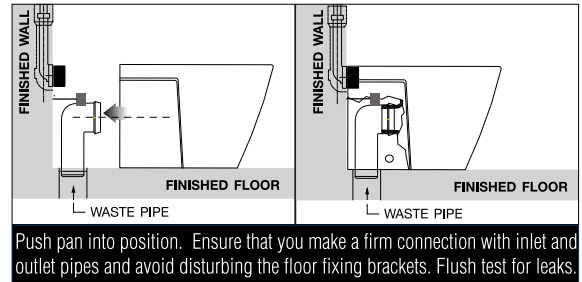
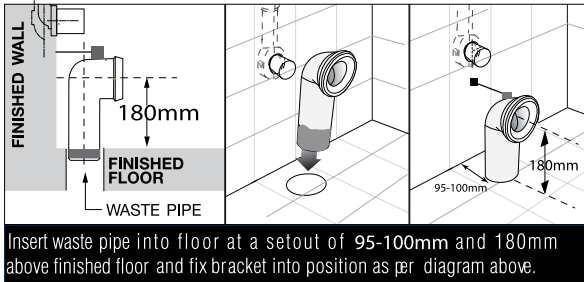
INSTALLATION INSTRUCTIONS

- Note:** All measurements for roughing in should be taken from the finished wall/floor
Fixing bracket & Water inlet

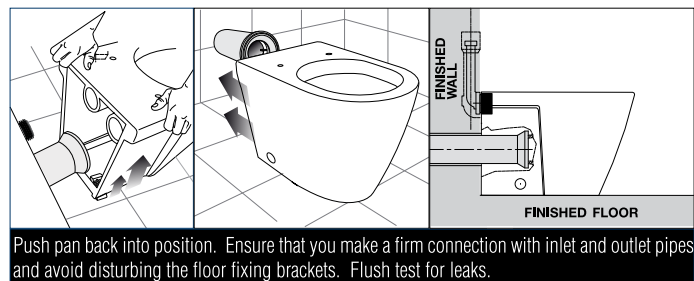
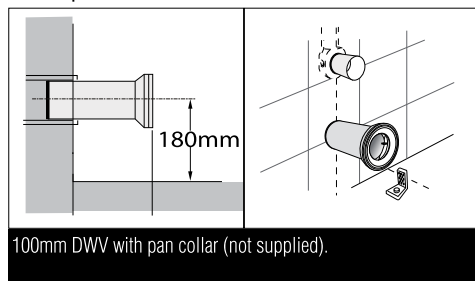


S-Trap Installation

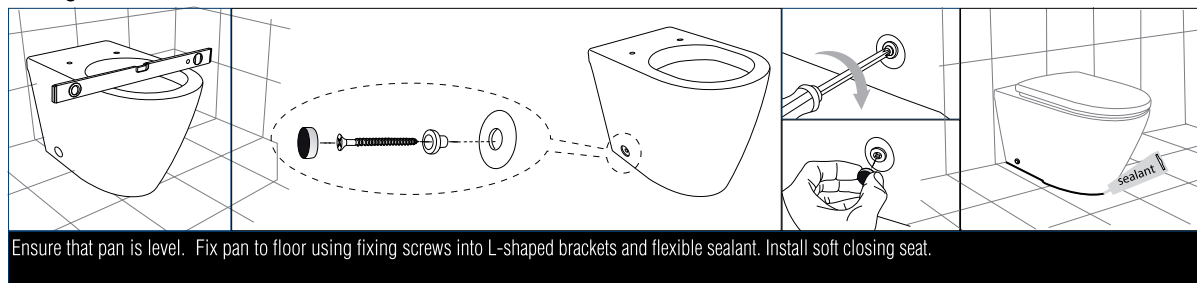
NOTE: This is a set out of 95-100mm



P-Trap Installation



Fixing Pan to Floor



Care Details

We recommend the use of soapy water or approved cleaners. This product should not be cleaned with abrasive materials. Damage caused by any improper treatment is not covered by the product warranty - refer to Warranty Conditions.

Plumbers, please ensure a copy of the installation instruction is left with the end user for future reference.

