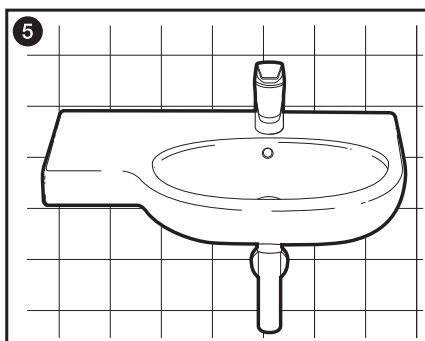
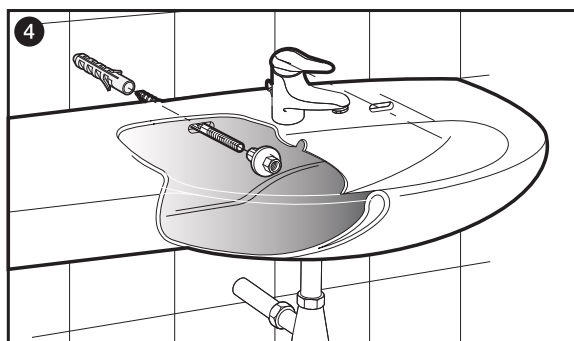
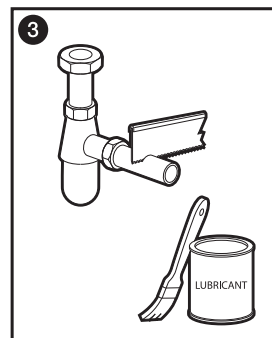
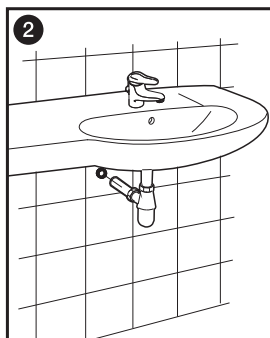
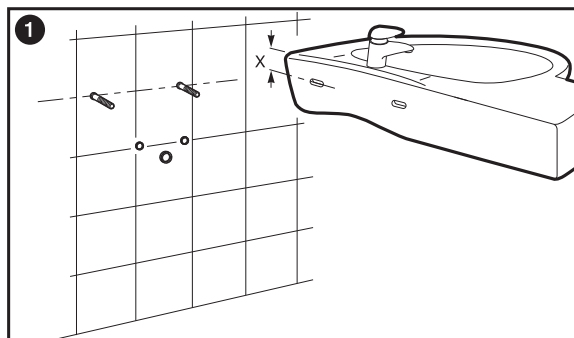
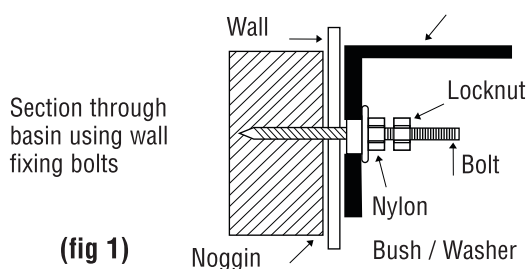


INSTALLATION

Note: If fixing to timber framed wall or partitioning, the wall should be reinforced with noggins to receive fixing bolts/screws.

- Drill holes into wall and install fixing bolts supplied (**fig 1**).
- Fit selected tapware to basin. Fit the supplied overflow or non-overflow waste to basin ensuring it is sealed with silicone.
- Carefully align basin complete with fittings onto protruding bolts.
- Insert nylon bushes and locking nut and partially tighten lock nuts to hold basin into position. Make minor adjustments at this stage to ensure basin is level and then fully tighten lock nuts. Do not over tighten.
- All visible external edges are to be joint sealed using flexible sealant ensuring to wipe off any excess.



Plumbers, please ensure a copy of the installation instruction is left with the end user for future reference.