 ST-5

FINAL INSPECTED MOTORS MUST COMPLY WITH ELECTRIC MOTOR VIBRATION SPECIFICATION (ES049)

THIRD ANGLE PROJECTION.

Q.R. No.		-		CUSTOMER NO.		-		
CUSTOMER		VARIOUS						
MOTOR RATING	VOLTS	240	Hz	50	Ph	1	Duty	A.O.M
	RPM.	1400			4.2 AMPS			
	NOM. OUTPUT	750 WATTS						
ROTATION		CLOCKWISE AT DRIVE END (REVERSIBLE)						
CAPACITOR		START	NIL	µF/V	RUN	20/440		µF/V
ENCLOSURE		VENTED						
MOTOR TYPE		CSR			INSULATION CLASS		B	
THERMAL PROTECTION		AUTO RESET OVERLOAD						
APPLICATION		EVAPORATIVE COOLER						
BEARING D.E.		6204 ZZ			LUBRICATION		LONG LIFE, WIDE RANGE	
BEARING N.D.E.		6203 ZZ						
SUPPLY LEAD		FLEX 1500±30 GREY						
EARTH PROVISION		VIA SUPPLY LEAD						
BASIC BUILD SPECIFICATION		470-063-02			PAINT/ COLOUR		PC GREYCASE PLAIN E/SHIELDS	
PERFORMANCE SPECIFICATION		SP94001-01						
CONNECTION DIAGRAM		305-305-02			RATING LABEL		SSTDAUTO.FMT	

The image shows a white rectangular label with a black border. At the top left is the FASCO logo, which consists of the word "FASCO" in white, bold, sans-serif capital letters inside a black rectangle. To the right of the logo, the text "DESIGNED AND MANUFACTURED TO AUSTRALIAN STANDARDS & SPECIFICATIONS" is printed in black, sans-serif capital letters. Below this text is a black rectangular box containing a white serial number "ddmmmyxxxx". Underneath the serial number box is another black rectangular box divided into two sections. The left section contains the word "MODEL" in white, bold, sans-serif capital letters. The right section contains the model number "80945BQVB-B11S" in white, bold, sans-serif capital letters. Below the model number box, there are three rows of technical specifications. Each row has three columns. The first column contains the unit name in black, sans-serif capital letters. The second column contains the value in black, sans-serif capital letters. The third column contains the unit name in black, sans-serif capital letters. The first row is "VOLTS 240 R.P.M. 1400 CLASS B130 Hz 50". The second row is "WATTS 750 TYPE CSR μF/V S NIL Ph 1". The third row is "AMPS 4.2 DUTY S1/AOM μF/V R 20/440 PROT. AUTO". At the bottom of the label, there is a black rectangular box containing the word "WARNING" in white, bold, sans-serif capital letters. To the right of the "WARNING" box, the text "MOTOR FITTED WITH INTERNAL AUTO RESET OVERLOAD AND MAY RESTART WITHOUT WARNING" is printed in black, sans-serif capital letters. The label is surrounded by a white border. There are blue dimension lines with arrows at the ends. A vertical dimension line on the right side indicates a height of 35.0. A horizontal dimension line at the bottom indicates a width of 87.0.

FASCO

DESIGNED AND MANUFACTURED TO
AUSTRALIAN STANDARDS & SPECIFICATIONS

ddmmmyxxxx

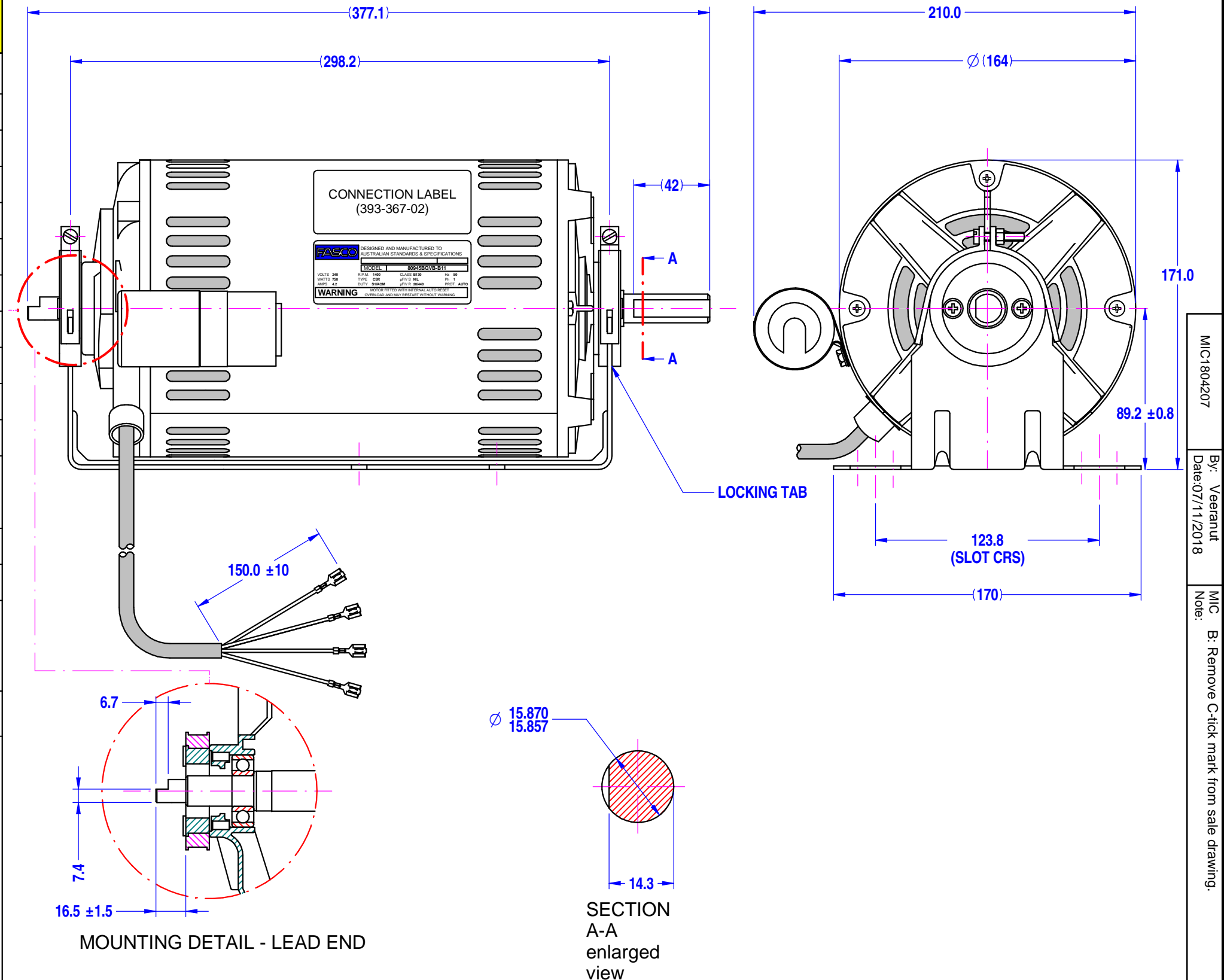
MODEL 80945BQVB-B11S

VOLTS **240** R.P.M. **1400** CLASS **B130** Hz **50**
WATTS **750** TYPE **CSR** μF/V S **NIL** Ph **1**
AMPS **4.2** DUTY **S1/AOM** μF/V R **20/440** PROT. **AUTO**

WARNING MOTOR FITTED WITH INTERNAL AUTO RESET
OVERLOAD AND MAY RESTART WITHOUT WARNING

35.0

87.0



1)_CAPACITOR FITTED TO MOTOR.
2) MOTOR TO BE PACKED IN SINGLE CARTON.

THIS DRAWING REMAINS THE PROPERTY OF FASCO
MOTORS AND MAY NOT BE USED, COPIED OR ISSUED
WITHOUT WRITTEN PERMISSION FROM FASCO MOTORS

DRAWN	muntana	12/07/2006
CHECKED	Pipat	20/12/2018
RELEASED	Suksakorn	27/12/2018
SCALE	NTS	

FASCO
THAILAND
29/7-8 MOO 3, BANGKRUAY - SAINOI Rd.,
ANGKRANG, MUANG NONTABURI DISTRICT,
NONTABURI 11000 THAILAND

A3

80945BQVB-B11S

B