

# COMFORT DT

The Grundfos COMFORT DT hot water circulator with digital timer, lets homeowners choose when they want hot water instantly available on tap.

Being able to set the timer to circulate hot water only in peak usage periods, like mornings and evenings, means no waiting for hot water when homeowners really need it - and saving on power usage when they don't.



## KEY FEATURES

### Fully customisable digital timer

Allows families to easily set the circulator to only run in peak usage periods, like mornings and evenings.

### Continuous operation

Can be set to operate 100% of the time when the family is home for longer periods, like holidays.

### Insulation Shell

Minimises heat loss from the pump body.

### Brass pump housing

Makes the Comfort DT corrosion free and AS/NZS 4020 Certified for delivery of potable drinking water.

### Liquid lubricated bearings

Mean the pump is virtually silent when running.

### Alpha Plug

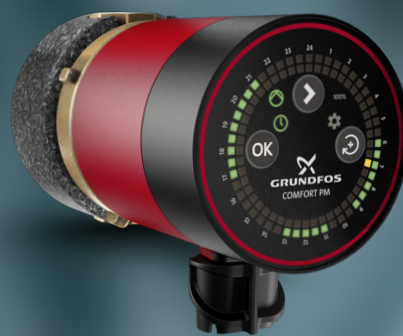
Makes electrical installation easy and maintenance even easier. Simply plug in and unplug at the pump.

**GRUNDFOS** 

Possibility in every drop

# GRUNDFOS COMFORT DT Hot Water Circulator

## Technical Data Sheet



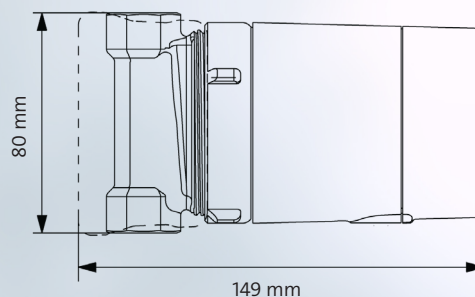
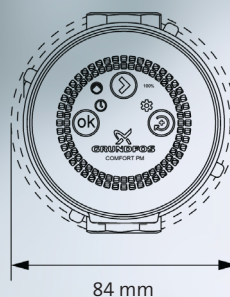
### PRODUCT PART NUMBERS

Grundfos Part No.	Reece Product Code	Description
99831287	1539585	Grundfos COMFORT 15-14 BDT PM GB

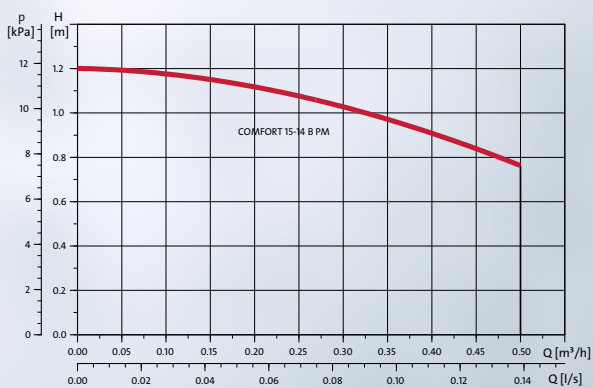
### TECHNICAL DATA

Liquid Temperature Max.	2°C - 95°C
Ambient Temperature Max.	40°C
System Pressure Max.	10 Bar
Inlet Pressure Min.	0.5 Bar
Enclosure Class	IP44 (Indoor Installation)
Power Supply	230 V / 50 Hz
Current	0.07 A
Power P1	7 W
Connections	RP 1/2" F
Port to Port	80mm

### DIMENSIONS



### PERFORMANCE



### OTHER RESOURCES



COMFORT  
Quickguide Installation  
Instructions



COMFORT DT  
Digital Timer  
Set-up video

**GRUNDFOS** 

Possibility in every drop