

POSH CANTERBURY SHOWER/BATH MIXER

GENERAL INFORMATION

- Pressure reducing valves should be installed if either pressure exceeds maximum stated below
- It is recommended that isolation stop taps are fitted to the inlet connections of the mixer
- Brazed connections should NOT be made directly onto the mixer, as excessive heat will cause permanent damage
- All pipework must be thoroughly flushed prior to installation of the mixer

Unequal Pressure Systems

- See specifications stated below
- A 450mm length of straight pipe must run from the mixer outlet before any bend occurs
- Line strainers should be installed in both the hot and cold water supply lines (foreign bodies could block the small hole in the colder water Venturi action nozzle)
- Install mixer as supplied

Equal Pressure Systems

- See specifications stated below

PRESSURE REQUIREMENTS

Unequal Pressure Systems

- Cold Inlet Pressure Range 300 to 600Kpa
- Hot Inlet Pressure Range 25 to 100kPa
- Hot Water Temperature 55°C MIN / 80°C MAX

Equal Pressure Systems

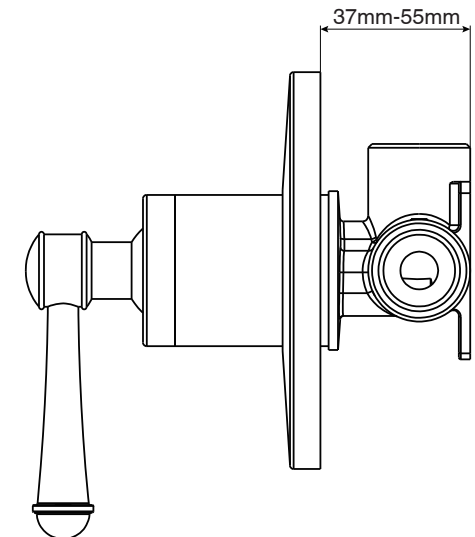
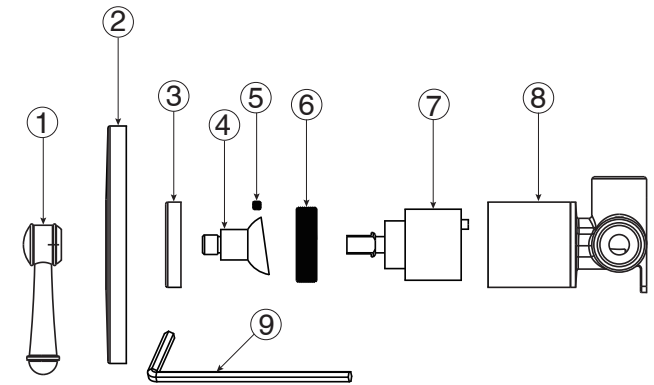
- Cold Inlet Pressure Range 300 to 600Kpa
- Hot Inlet Pressure Range 300 to 600kPa
- Hot Water Temperature 55°C MIN / 80°C MAX

INSTALLATION

1. Mount the Mixer Body (8) to a suitable support timber in the wall and secure with screws. When facing the mixer, the connections should be:
 - Hot Water Inlet Connection 'H' to the left
 - Cold Water Inlet Connection 'C' to the right
 - Mixer Water Outlet Connection, vertically upwards
 - Check all connections for leaks
 - Mixer Body (8) must be installed square to the wall/tile face to ensure Cover Plate (2) sits flush
2. Fit Cover Plate (2) followed onto the Mixer Body (8) until the Cover Plate (2) abuts wall/tile face
3. Fit the Handle (1) taking care that it is pushed fully down. Tighten Grub Screw (5) using the Allen Key (9) provided
4. Turn on the hot and cold water supply and check operation

REPLACING THE CARTRIDGE

1. Turn off hot and cold water supplies
2. Using the Allen Key (9) to loosen the Screw (5) and remove the Handle (1). Unscrew the Cap (4) taking care not to damage the decorative finish. Remove the Nut (6) then lift out the Cartridge (7)
3. Ensure that the inside of the Mixer Body (8) is clean. Fit the Cartridge (7) into the Mixer Body (8), taking care that the two lugs on the base of the Cartridge (7) fit into the matching holes in the Mixer Body (8)
4. Screw in the Nut (6). The Nut (6) should be tightened to a torque of 11Nm. Screw on the Cap (3)
5. The assembly of the Handle (1) is a reversal of the removal procedure



Responsibility will not be accepted for incorrect installation of this Tapware or any Tapware **not installed by a REGISTERED PLUMBER**

Plumbers, please ensure a copy of the installation instructions is left with the end user for future reference

Posh

reece™