



WOLFEN™

INSTALLATION MANUAL

9505569 Wolfen Electronic Foot Pedal Operated Tap





WOLFEN™

IF AFTER CHECKING THE
INSTALLATION INSTRUCTIONS
AND IMPORTANT
INFORMATION, THE PROBLEM
HAS NOT BEEN IDENTIFIED,
PLEASE CONTACT AUTOFLO
CUSTOMER SUPPORT ON:

+61 3 9380 8244 or
customerservice@autoflo.com.au

CONTENTS

Intro	03
Technical Information	04
Unit Components	06
Installation Instructions	08
Warranty	11

Delivering unrivalled quality

Designed for absolute performance, Wolfen's electronic foot pedal operated tap sets new standards in quality and durability. Ergonomic design combined with precision engineering ensures that every Wolfen product is easy-to-use and made to last. Here are just some of the many innovative features that make the Wolfen electronic foot pedal operated tap the smart solution.

Infection control

- Hands-free operation

Commercial durability

- Heavy-duty foot pedal

Installation and servicing

- Wall bracket for solenoid control box
- Fixed 1/2" BSP thread provides a fast and stable installation point

Usage features

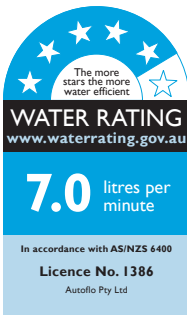
- Touch-on / touch-off and timed operation
- LED on control unit indicates when battery is low

Anti-vandal features

- Aerator cannot be easily unscrewed

Application

- Hospital and health care
- Commercial food premises



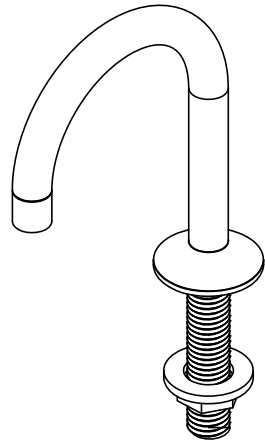
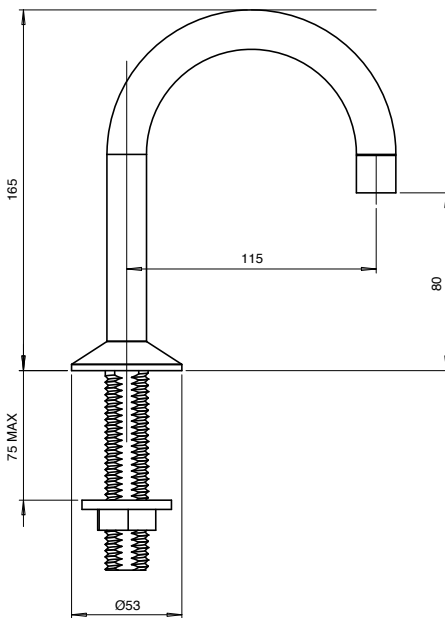
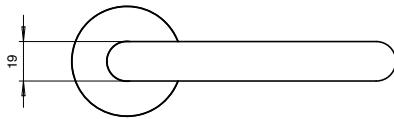
Suitable for High Pressure applications
(minimum 150kPa)

TECHNICAL INFORMATION

Product Code	9505569
Colour	Chrome
Finish	Polished
Material	Brass
Power Supply	6V Battery
Max Continuous Flow Working Pressure	500kPa
Min Continuous Working Temperature	2°C
Max Continuous Working Temperature	50°C
Max Static Pressure	500kPa
Height	165mm
Reach	115mm
Run Time Adjustable	15-40 seconds
Safety Timer	45 seconds maximum

Wolfen Electronic Foot Pedal Operated Tap





UNIT COMPONENTS

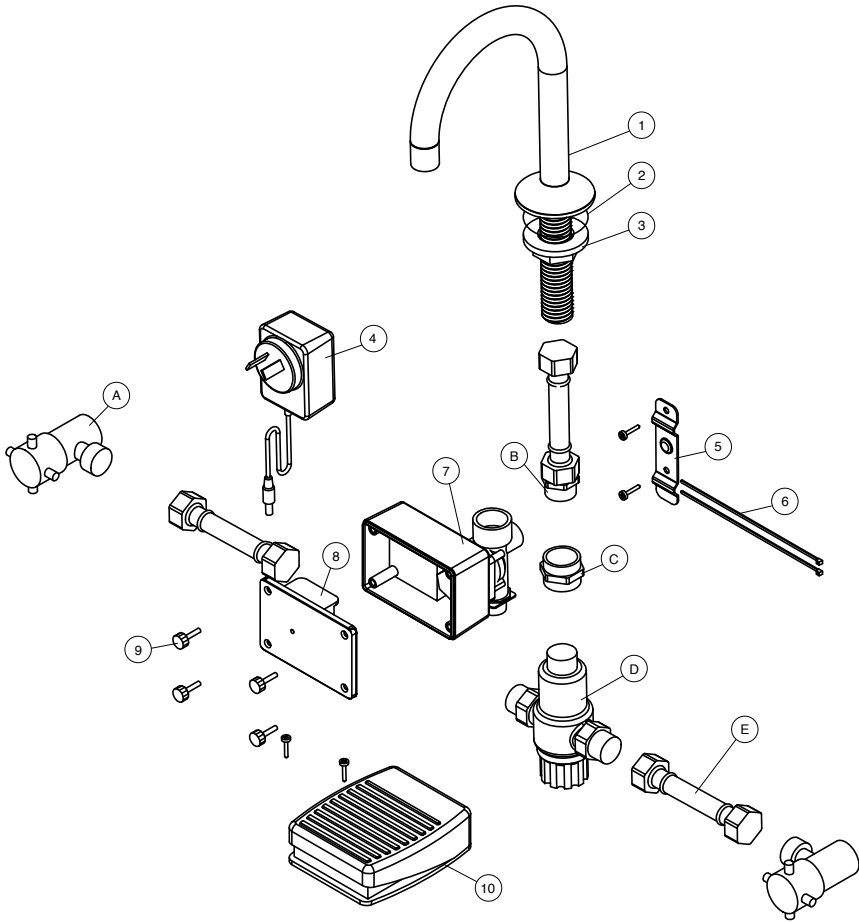
Wolfen Electronic Foot Pedal Operated Tap

Item No.	Part Number	Description	Qty
1	600-0180	Gooseneck Spout	1
2	600-0107	Spout O-Ring	1
3	600-0102	1/2" Nut	1
4	600-0105 (optional)	9V Transformer Power Pack	1
5	300-0101	Solenoid Wall Bracket	1
6	600-0103	Cable Ties	2
7	300-0102	Control Unit	1
8	600-0106	6V Battery (CR-P2)	1
9	600-0104	Thumb Screw	4
10	300-0100	Foot Pedal	1
A	N/A	Stop Tap	2
B	N/A	1/2" Nipple	1
C	N/A	1/2" Socket	1
D	N/A	Tempering Valve	1
E	N/A	Flexible Hose	3

NOTE: The transformer is optional for mains operation.

NOTE: Parts A-E are not supplied with the product.





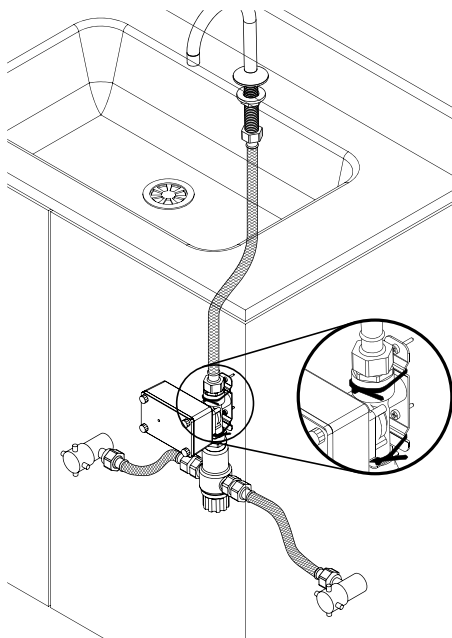
INSTALLATION INSTRUCTIONS

Important Note

The product must be installed to the requirements of AS/NZS 3500 by a qualified plumber. The product comes to you already factory assembled and tested. We do not recommend the dismantling of any internal part of the product. The product is factory tested and sealed so as to give the best performance.

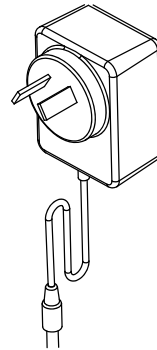
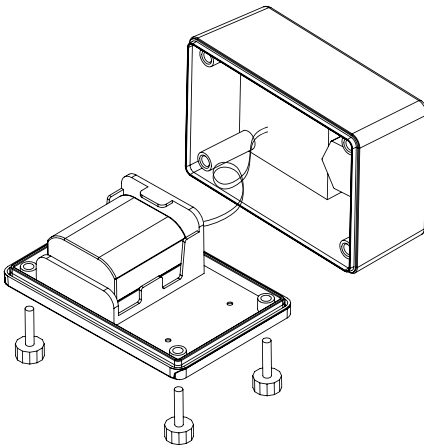
Electronic Foot Pedal Operated Tap Installation Instructions:

1. Please flush out new pipe work prior to connecting the unit.
2. The product should be installed with isolating stop cocks (Arco brand recommended).
3. This tap is suitable for high pressure applications where cold water supply pressures are at 150kPa or above. Where pressure is above 500kPa, a pressure limiting valve must be used.
4. Affix the gooseneck outlet to the basin, ensuring the supplied o-ring is in position under the spout before tightening the outlet nut under the basin.
5. Connect the control unit directly to the tempering valve with a 1/2" to 1/2" socket, or with a steel braided hose if necessary. Ensure the arrow on the solenoid rear is pointing up towards the spout – this indicates water flow direction.
6. Mount the control unit wall bracket in a suitable position so as to allow easy access to the tempering valve adjuster after the installation (see unit component diagram).
7. Should the tempering valve not be equipped with internal check valves, they must be fitted between the hot and cold taps, and the tempering valve.
8. Ensure all water connections are made before securing the tempering valve/control unit to the wall bracket. Use the two supplied cable ties to secure the assembly to the wall bracket. The solenoid is to be placed on the bracket pillar before tightening the cable ties.



9. Turn hot and cold water on and check for leaks.
10. Connect the foot switch to the larger socket (labelled foot switch) on the underside of the control unit.
11. On the battery powered unit, remove the unit cover by unscrewing the four thumb screws and dropping the cover to gain access to the battery holder inside the control unit. Fit the supplied 6V battery in the battery holder on the rear of the unit cover.
12. For a mains power unit, connect the power pack plug (optional power pack available through Reece, code 9506218) into the smaller socket on the underside of the control unit (labelled power pack). Then, plug the power pack into the mains socket and turn power ON.

9506218



13. Following steps 11 or 12, observe three bursts of water through the spout, indicating the unit is ready for use.
14. Test the foot pedal by pressing once and observe the water flow. Press again to stop the water.
15. Ensure that the foot switch/pedal is placed in a convenient position to operate the unit when using the basin/sink. The foot pedal can be foot operated on the floor or cabinet, or alternatively higher for knee operation.

Automatic and Manual Mode Operation:**Automatic mode timer set**

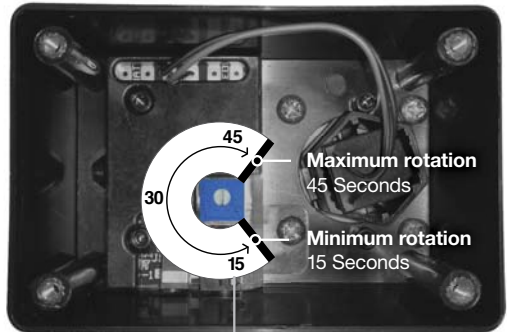
Use a small flat head screwdriver and rotate the dial to the desired automatic shut-off time between 15 and 45 seconds. (See image)

Automatic mode operation

Press foot pedal once to initiate water flow. Water will flow until pre-set auto shut-off time. To instantly cease water flow, press foot pedal before auto shut-off time.

Manual mode operation

Press and hold foot pedal to initiate water flow. Water will flow until pedal is released, or to a maximum of 1 minute, which ever come first. Should more water be required, repeat.

Control box internals

Time in seconds (approx)

IMPORTANT INFORMATION:

- If installing the unit using the mains power, the power pack must be mounted in an area away from likely water contact or damage to the case. All electrical work must comply with local electricity supply regulations. Ensure all connections are securely made before turning on power.
- To avoid damage to the control unit solenoid, ensure that no loose pieces of Teflon tape enter the unit.
- Make sure to check the foot pedal location with the end use customer.

REECE PRODUCT QUALITY GUARANTEE



You have purchased a quality product from Reece Australia Pty Ltd ABN 84 004 097 090 ("Reece"). This product is covered by a 5 year replacement product warranty and a 12 month warranty over spare parts and labour.

5 YEAR WARRANTY

This warranty covers faults in the product construction, material and assembly. Products which are within 5 years from the date of purchase, found upon inspection by an authorised Reece representative, to be defective in construction, material or assembly, will be repaired or exchanged with an equivalent product free of charge. Replaced items become Reece's property.

All replacement products will be available for collection without charge to the customer at the nearest Reece branch to the customer's location, or elsewhere as agreed between the customer and Reece.

Labour and Spare Parts

The labour for the replacement of products and spare parts to which this warranty applies will be supplied by Reece or relevant supplier using licensed plumbers engaged by Reece or relevant supplier within 1 year from the date of purchase. Spare parts other than those listed in the Manufacturer's Provisions above, which are within 1 year from the date of purchase found upon inspection by an authorised Reece representative to be defective in construction, material or assembly, will be replaced free of charge.

Warranty Conditions

This warranty will apply only under all of the following conditions:

- The item has been installed by a licensed plumber
- Failure is due to a fault in the manufacture of the product
- Proof of purchase (including the date of purchase) is provided
- The installation of the product is in accordance with the instructions provided

This warranty does not cover products purchased as an ex-display without being fully checked and tested for sale by the manufacturer.

This warranty does not include faults caused by:

- Unsuitable or improper use
- Incorrect installation or installation not in accordance with the instructions provided
- Installation or part installation by the purchaser or any person other than a LICENSED PLUMBER
- Normal wear and tear
- Inadequate or complete lack of maintenance
- Chemical, electrochemical or electrical influences
- Harsh detergents or abrasive cleaners used on product finishes

EXCLUSIONS

To the fullest extent permitted by law, Reece excludes all liability for damage or injury to any person, damage to any property, and any indirect consequential or other loss or damage.

CLAIM PROCEDURE

For all warranty queries customers are to contact the branch where the product was purchased. These details can be found on your purchase invoice.

Our goods come with guarantees that cannot be excluded under the Australian Consumer Law. You are entitled to a replacement or refund for a major failure and for compensation for any other reasonably foreseeable loss or damage. You are also entitled to have the goods repaired or replaced if the goods fail to be of acceptable quality and the failure does not amount to a major failure.

Don't risk it, use a licensed plumber.™



WOLFEN™

reece.com.au/wolfen