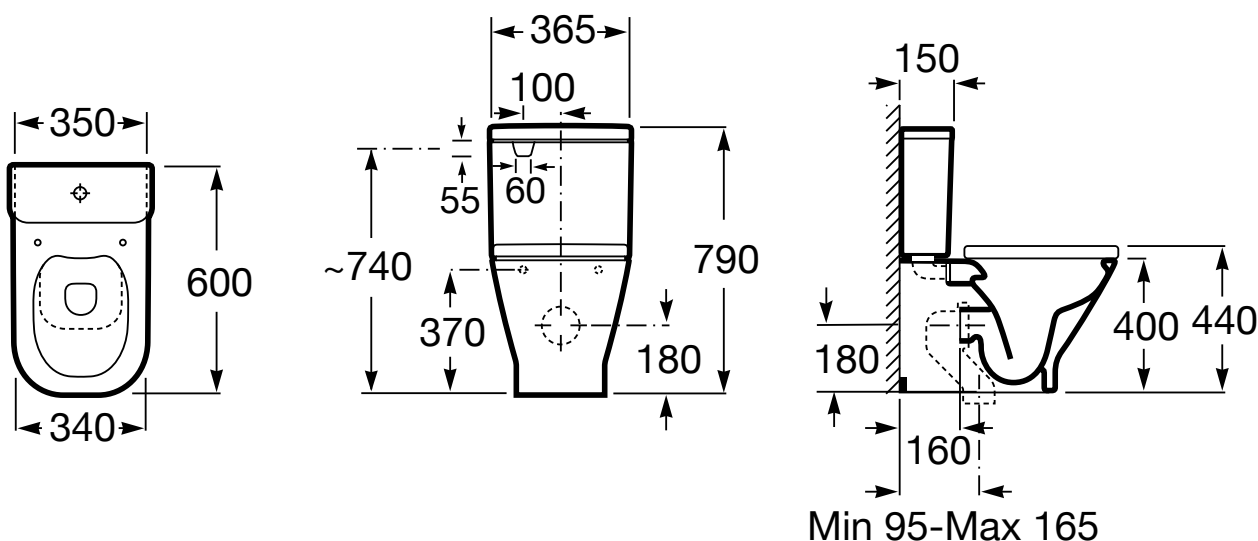


ROCA

THE GAP RIMLESS BACK TO WALL TOILET SUITE BACK INLET



Min 95-Max 165

Dimensions are nominal measurements only

SPECIFICATION

Recommended Use	Domestic, hotel and commercial
Rim Configuration	Clean Rim
Bowl Configuration	P Trap (Converts to S using plastic S-bend provided)
Pan Fixing	Pan requires to be fitted to a noggin inside the wall (Pan Wall fixing kit supplied)
Cistern Fixing	Top-fix cistern bolted directly to the bowl
Seat	Matching top-fix, soft-close seat supplied with suite
Water Inlet	Back Inlet
Inlet Valve	Recommended max. working pressure 1000kPa
Weight	Pan: 30kg, Cistern: 11kg
WELS	4 Star WELS Rating 4.5/3 litres dual flush 3.5 litres average flush
Standards	AS1172



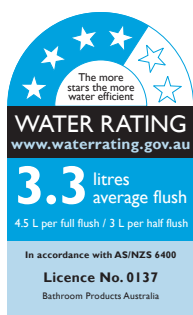
To see the complete Roca range go to
www.reece.com.au/bathrooms

CLEANING RECOMMENDATIONS

We recommend the use of soapy water or approved cleaners.

This product should not be cleaned with abrasive materials.

Damage caused by any improper treatment is not covered by the product warranty. Refer to Warranty Conditions.



WaterMark
AS 1172
WMKA 02321

Disclaimer: Products in this specification manual must by regulation be installed by licensed and registered trade people. The manufacturer/distributor reserves the right to vary specifications or delete models from their range without prior notification. Dimensions and set-outs listed are correct at time of publication however the manufacturer/distributor takes no responsibility for printing errors.

Tech Page Version 2

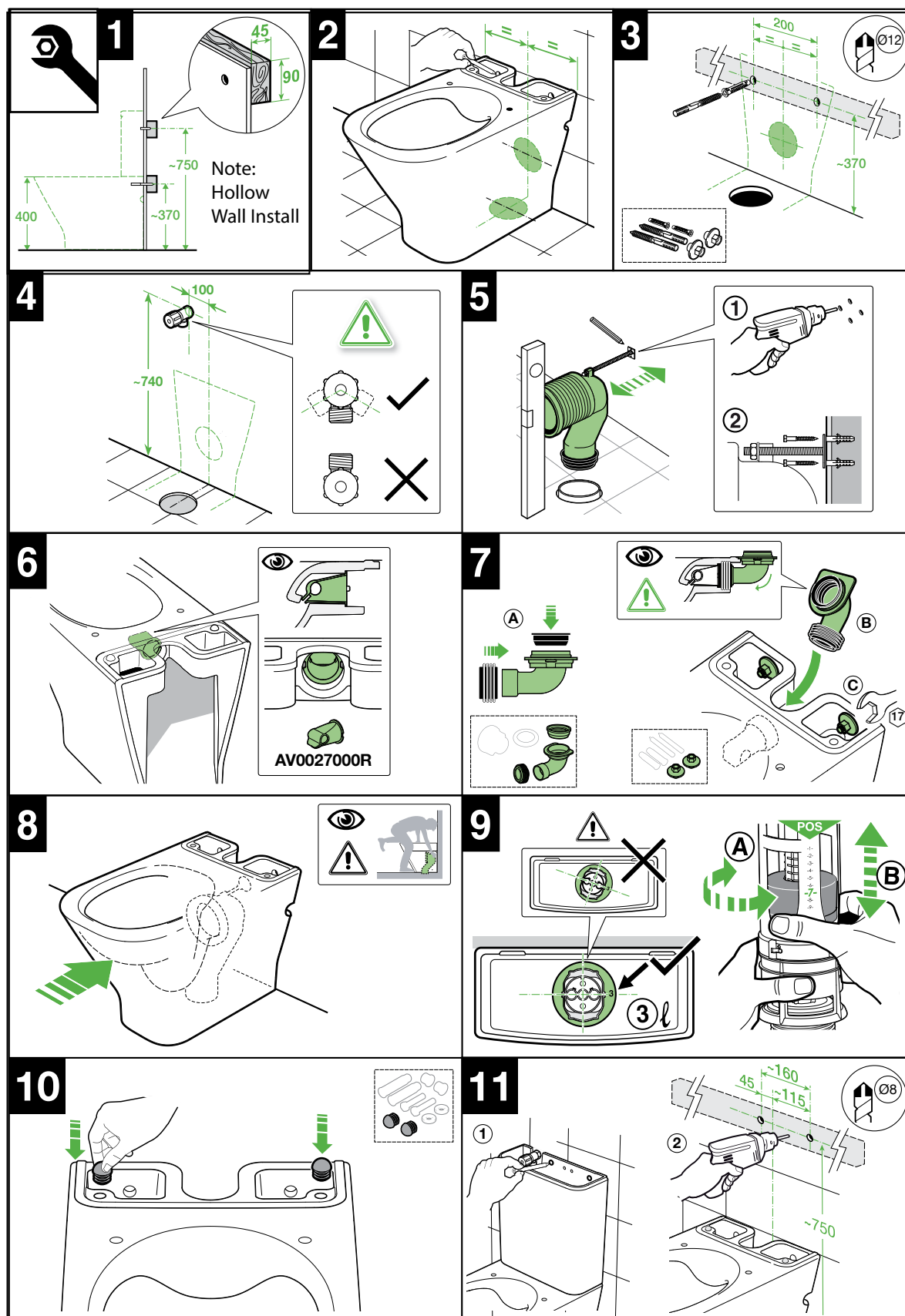
Roca

reece

ROCA

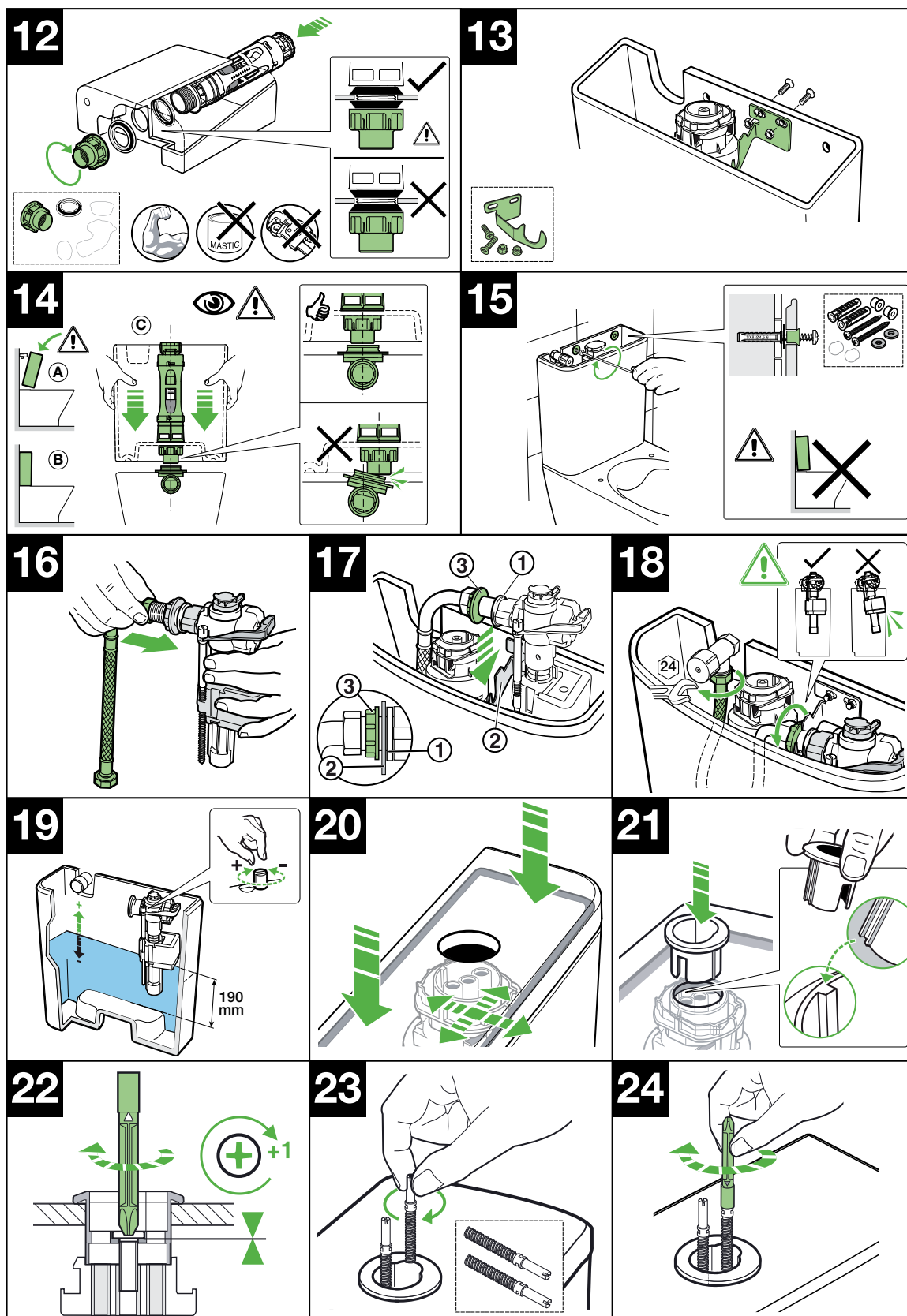
THE GAP RIMLESS BACK TO WALL TOILET SUITE BACK INLET

INSTALLATION INSTRUCTIONS



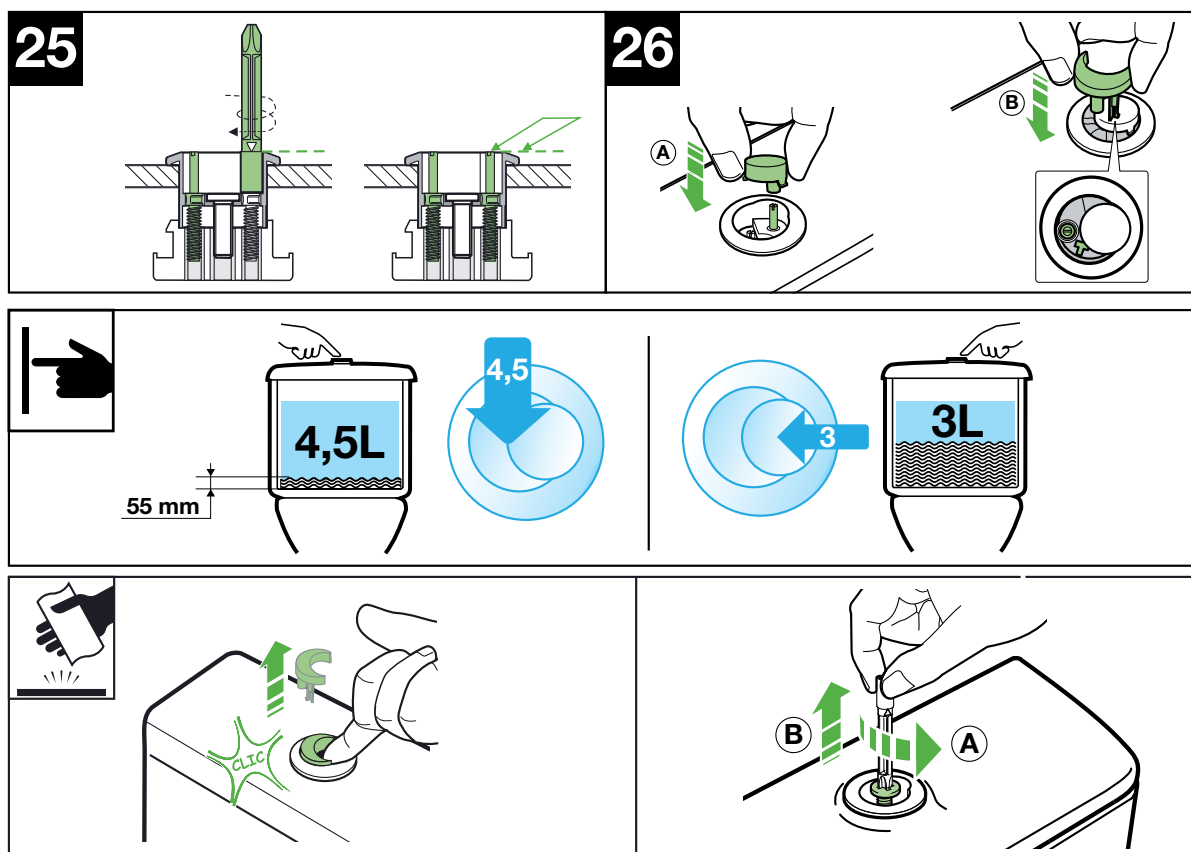
ROCA

THE GAP RIMLESS BACK TO WALL TOILET SUITE BACK INLET

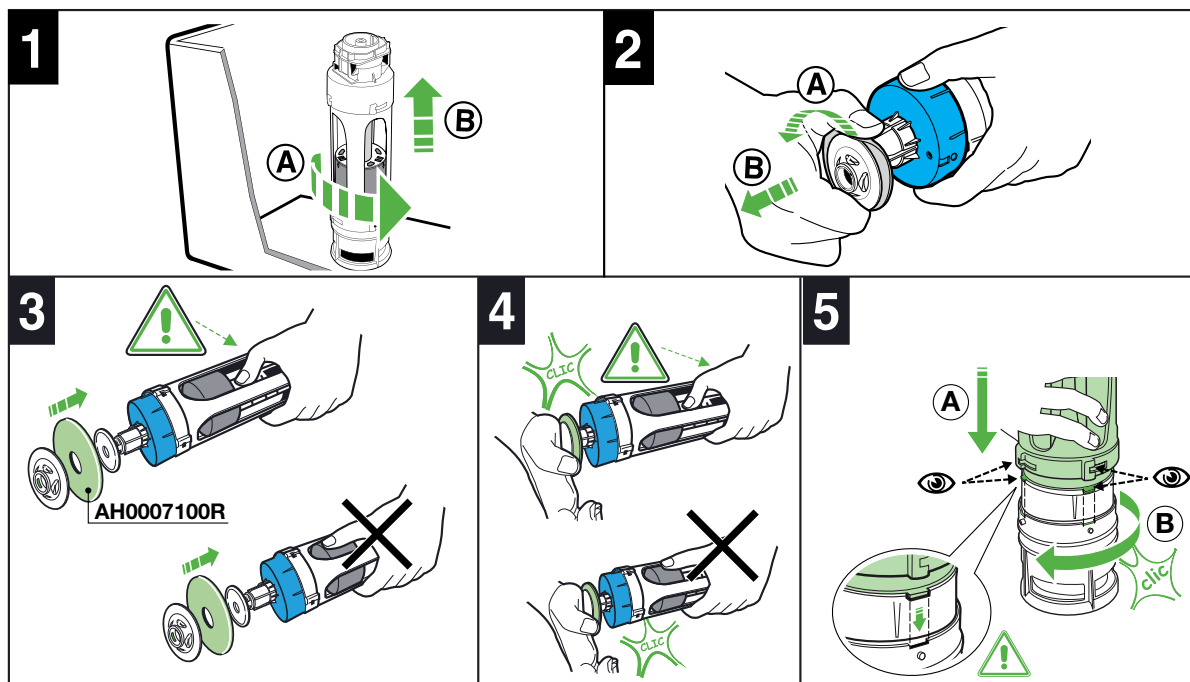


ROCA

THE GAP RIMLESS BACK TO WALL TOILET SUITE BACK INLET



MAINTENANCE / REPLACEMENT OF OUTLET WASHER



Plumbers, please ensure a copy of the installation instructions is left with the end user for future reference

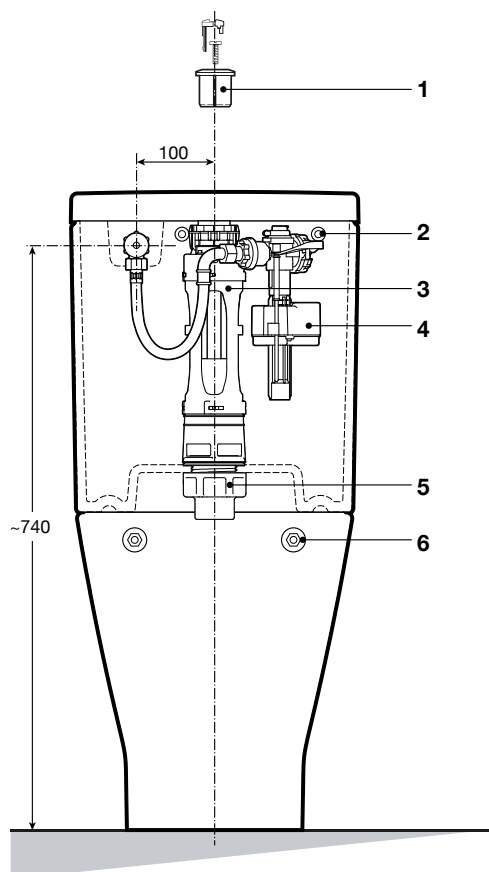
Roca

reece

ROCA

THE GAP RIMLESS BACK TO WALL TOILET SUITE BACK INLET

PARTS



1 - AH0001800R Push Button Assembly

2 - AV0014700R Cistern Fixing Kit



3 - AH0009200R Outlet Valve

4 - A822096400 **W** Inlet Valve

5 - AV0014900R Outlet Flush Assembly



6 - AV0007500R Pan Fixing Kit

