

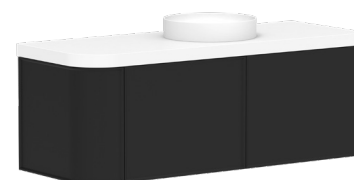
KADO

ERA ALL DRAWER - 50MM BENCHTOP (SINGLE CURVED END)



SPECIFICATIONS

Recommended Use	Domestic, Hotel and Commercial
Vanity Top Material	50mm Durasein Solid Surface Basin sold separately
Vanity Unit Material	MDF MR E0 (Medium Density Fibreboard, Moisture Resistant, Rated Emission Level E0)
Vanity Colour Variations	Matte White, Matte Feather Grey, Matte Black, Matte Royal Battle (Blue), Matte Wolfram (Green), Matte Red Marble
Interior Finish	Fresh White
Tap Hole Availability	0, 1 or 3 Tap Holes (pending basin selection)
Waste	Chrome Universal Plug & Waste 40mm Outlet (included) Dura Short Trap (recommended for semi-inset basins)
Fixing	Bolted/Screwed to the wall by a licensed tradesperson (Fixings not included).
Drawers	Deluxe solid sided soft-close drawers in white OR Hettich AvanTech Push-To-Open Drawers in white Internal storage drawer in white
Inclusions	150mm radius, curved push-to-open shaker door. One end flat panel, suitable for against wall installation.
Handle Options or Push-to-Open Drawer(s)	350mm Blaze Handle available in <i>Matte Black, Matte White, Brushed Nickel</i> or <i>Brushed Brass</i> . Cooper Knob available in <i>Matte Black, Matte White, Brushed Nickel</i> or <i>Brushed Brass</i> . Seashell Handle available in <i>Matte Black, Brushed Brass, Brushed Nickel</i> or <i>Chrome</i> . Push-to-Open option.



To see the complete KADO range go to www.reece.com.au/bathrooms

STANDARD SIZES	600mm	750mm	1050mm	1350mm	1650mm
Width (mm)	605	755	1055	1355	1655
Depth (mm)	500	500	500	500	500
Wall Hung Height (mm)	500	500	500	500	500
Number of Drawer(s)	1	1	1	2	2
Number of Doors (Curved Ends)	1	1	1	1	1
Basin Configurations	Centre	Centre	Centre/Offset	Centre/Offset/ Double	Centre/Offset/ Double

Disclaimer: Products in this specification manual must by regulation be installed by licensed and registered trade people. The manufacturer/distributor reserves the right to vary specifications or delete models from their range without prior notification. Dimensions are nominal measurements only. Dimensions and set-outs listed are correct at time of publication however the manufacturer/distributor takes no responsibility for printing errors.

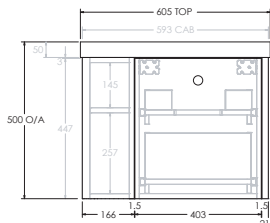
Tech Page Version 1

KADO

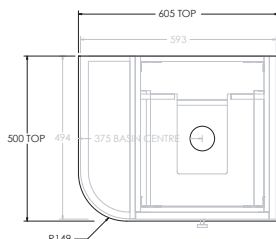
ERA ALL DRAWER - 50MM BENCHTOP (SINGLE CURVED END)

600mm

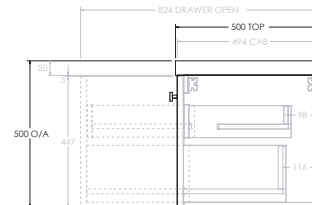
Front View



Top View

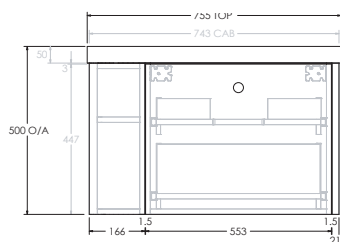


Side View

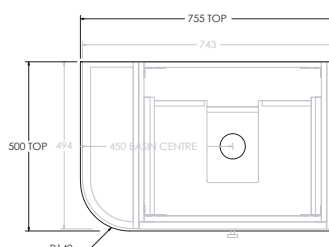


750mm

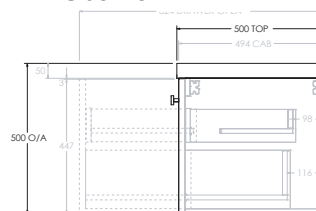
Front View



Top View

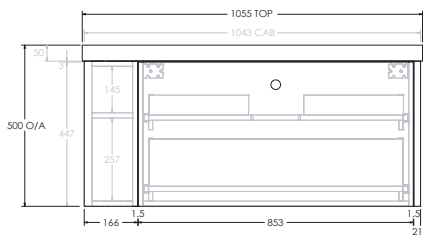


Side View

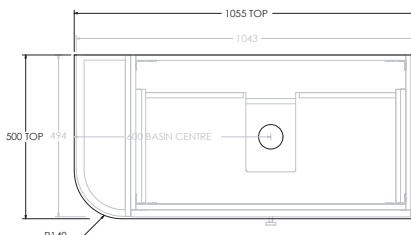


1050mm Centre

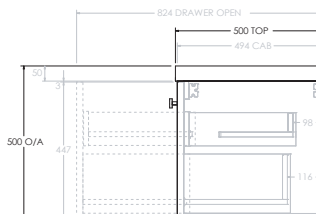
Front View



Top View

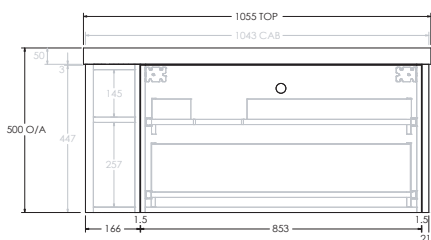


Side View

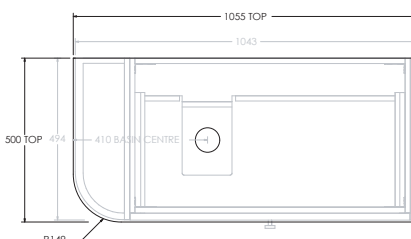


1050mm Left Hand Offset

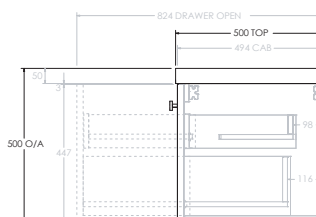
Front View



Top View

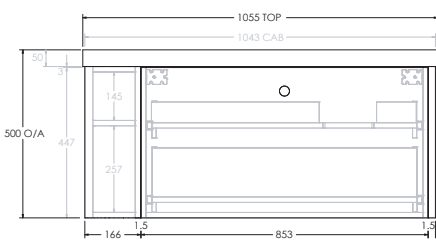


Side View

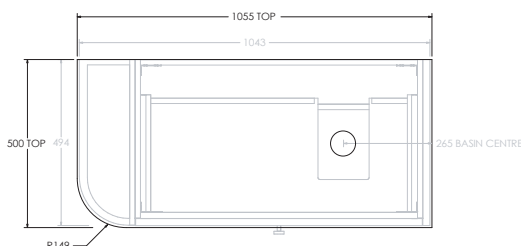


1050mm Right Hand Offset

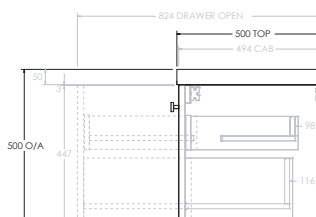
Front View



Top View



Side View



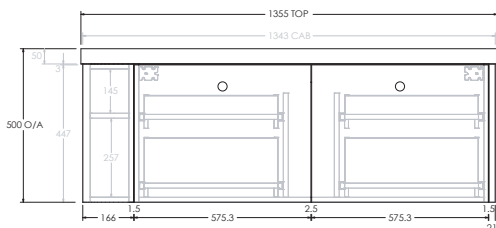
Please Note: Specs show benchtop over hang on flat end, specify on order form if end is up against wall to remove overhang (-6mm).

KADO

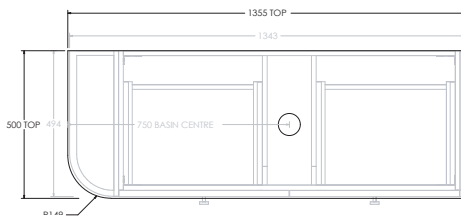
ERA ALL DRAWER - 50MM BENCHTOP (SINGLE CURVED END)

1350mm Centre

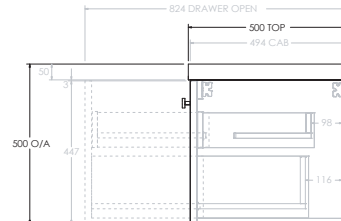
Front View



Top View

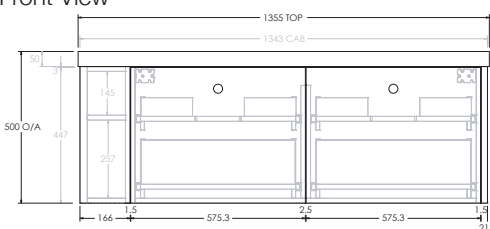


Side View

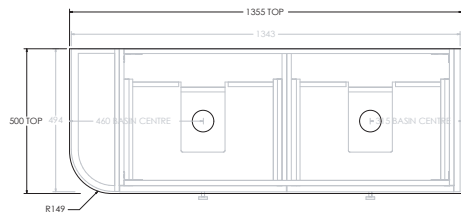


1350mm Double

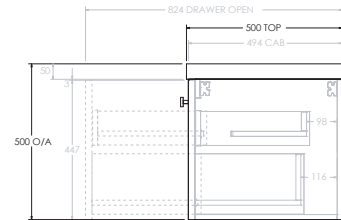
Front View



Top View

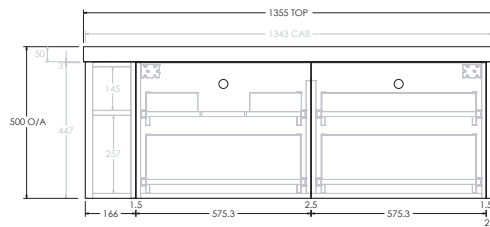


Side View

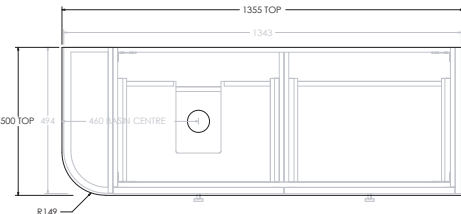


1350mm Left Hand Offset

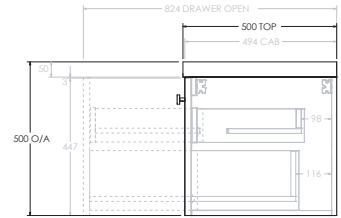
Front View



Top View

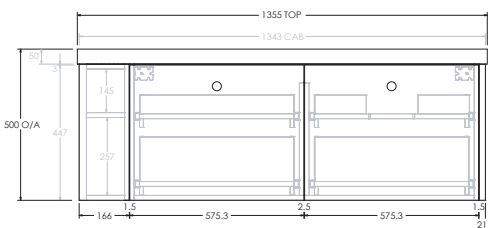


Side View

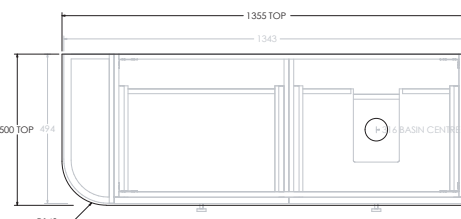


1350mm Right Hand Offset

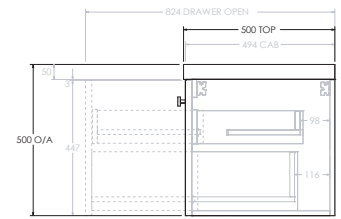
Front View



Top View

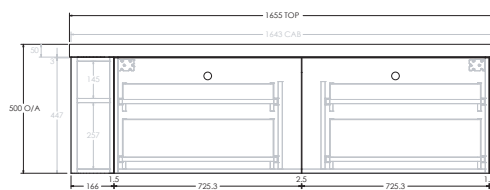


Side View

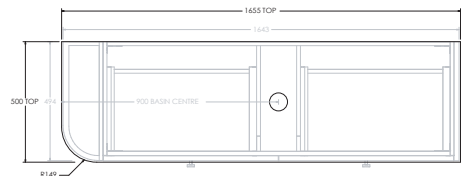


1650mm Centre

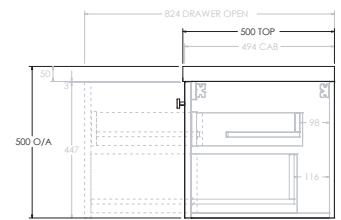
Front View



Top View



Side View



Please Note: Specs show benchtop over hang on flat end, specify on order form if end is up against wall to remove overhang (-6mm).

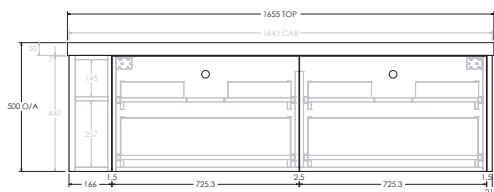


KADO

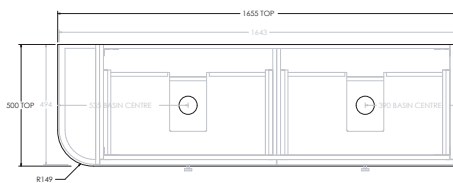
ERA ALL DRAWER - 50MM BENCHTOP (SINGLE CURVED END)

1650mm Double

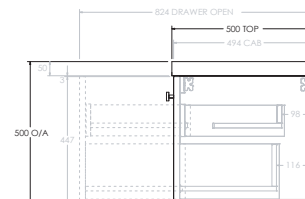
Front View



Top View

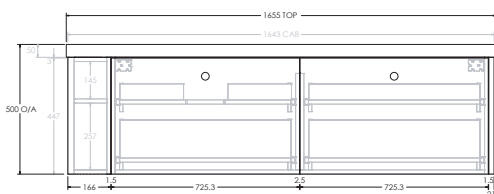


Side View

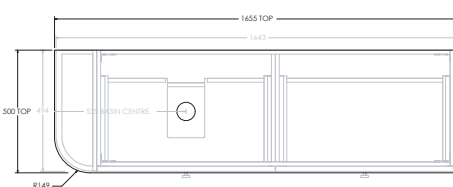


1650mm Left Hand Offset

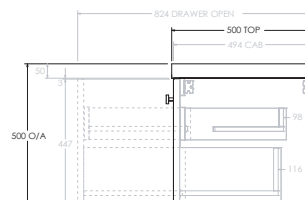
Front View



Top View

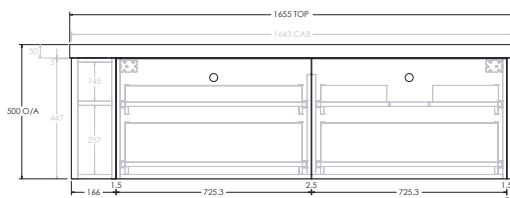


Side View

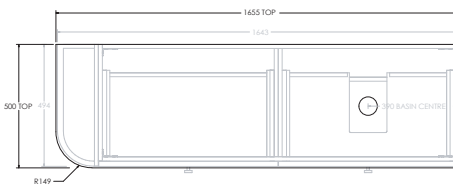


1650mm Right Hand Offset

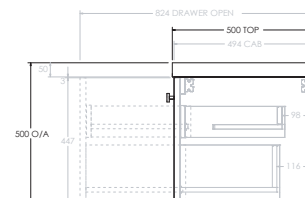
Front View



Top View



Side View



Please Note: Specs show benchtop over hang on flat end, specify on order form if end is up against wall to remove overhang (-6mm).