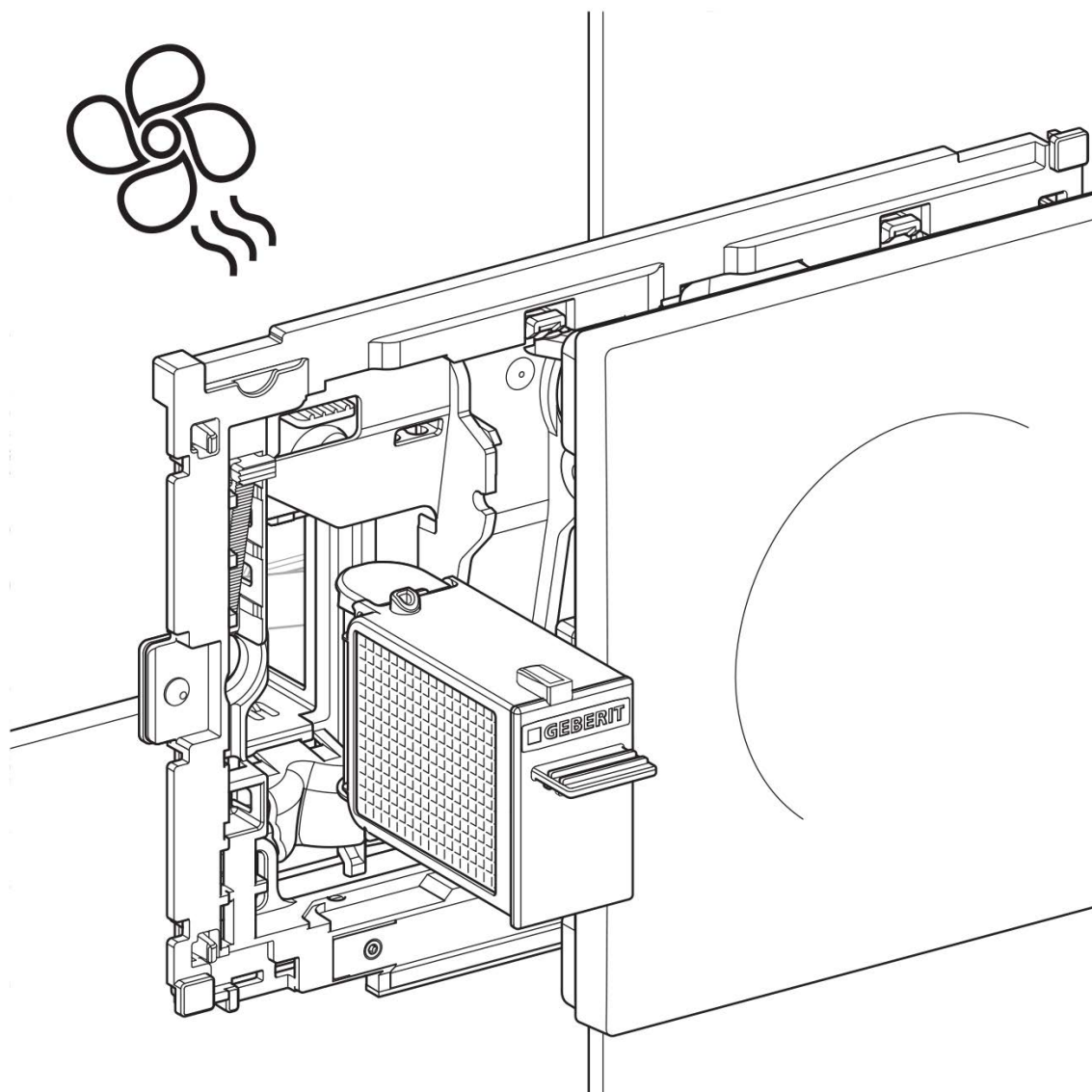


■ GEBERIT**Geberit DuoFresh**

USER MANUAL

Plumbers, please ensure a copy of the installation instructions is left with the end user for future reference.

Published 28/07/2021



Page 1 of 11



Geberit DuoFresh

Target group

This document is intended for all users of the Geberit DuoFresh modules with automatic activation and insert for Geberit DuoFresh stick.

Children and adults who are not familiar with its use should be given appropriate instructions and may need to be supervised.

Intended use

The integrated odour extraction unit is designed to neutralise unpleasant odours in toilets.

Operation, care and maintenance work may only be performed by the operator or user as described in this user manual.

Use for any other purpose is deemed improper. Geberit accepts no liability for the consequences of improper use.

Safety notes

- Impurities in the filter could lead to contamination of the breathing air. In order to preclude any health risks and ensure proper functioning, the filter must be replaced annually.
- This machine may be used by children as well as persons with reduced physical, sensory or mental capabilities or a lack of experience with and knowledge about the machine, provided that they are supervised or taught how to use the machine safely and that they understand the hazards that may result from this. Children must not play with the device. Children must not carry out cleaning or user maintenance without supervision (in accordance with EN 60335-1:2012).
- Do not perform any changes or additional installations.
- Repairs may only be carried out by a skilled person using original spare parts and accessories.

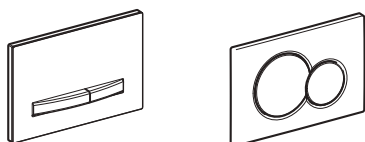
Geberit DuoFresh

Product description

The odour extraction unit neutralises unpleasant odours in the toilet via a filter. Suitable Geberit DuoFresh sticks can be inserted into the cistern via a drawer. The Geberit DuoFresh module is equipped with user recognition and an orientation light. The settings can be modified with the Geberit Home app.



The actuator plate featured in these instructions corresponds to the Sigma20 type and also applies analogously for other compatible types.

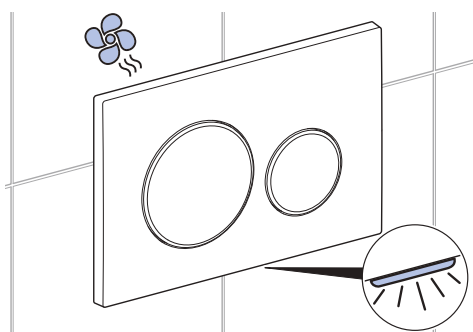


Operation

Starting the odour extraction unit



When a user approaches the toilet, the orientation light lights up and the odour extraction unit starts up.



The odour extraction unit shuts off automatically after approx. 2 minutes (factory setting).



Geberit DuoFresh

Modifying settings

The settings for the odour extraction unit and the orientation light can be modified with the Geberit Home app. The status of the odour neutralisation filter is also shown.

The Geberit Home app is available free of charge for Android and iOS smartphones in the respective App Store.

Android:



iOS:



In order to operate the product with the Geberit Home app, a one-time pairing process must be carried out to establish a connection with the app.

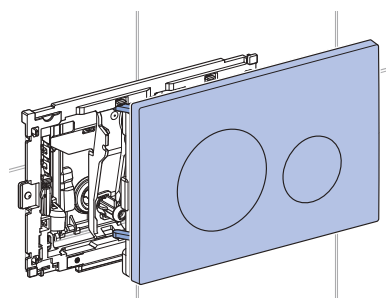
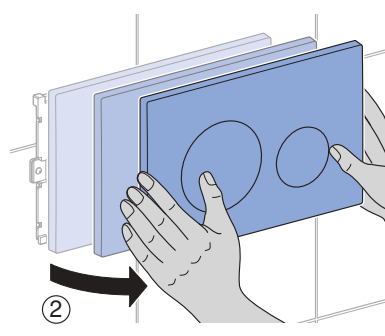
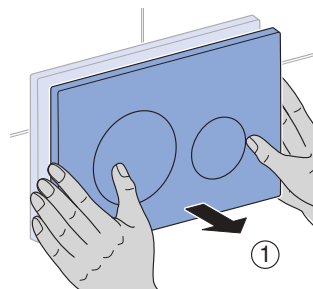
To do this, open the actuator plate and read the QR code with the app.



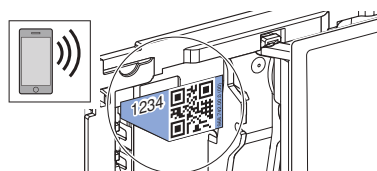
For detailed Geberit Home App operation, please scan the QR code below:



- 1** Gently pull the actuator plate forwards (1) and swivel it to the right (2).



- 2** Read the QR code with the app or enter the printed four-digit number (e.g. 1234).





Geberit DuoFresh

Inserting a Geberit DuoFresh stick

Prerequisite

- The Geberit DuoFresh stick colours the water blue. Only insert a new stick when you notice a permanent decline in the colouring effect.

One DuoFresh stick will last approximately 120 flushes, corresponding to a duration of approximately 2 weeks.



Only use original Geberit DuoFresh sticks. These can be ordered as part of the DuoFresh Annual Servicing Kit (product code: 1804984) from your local Reece Bathroom stores.

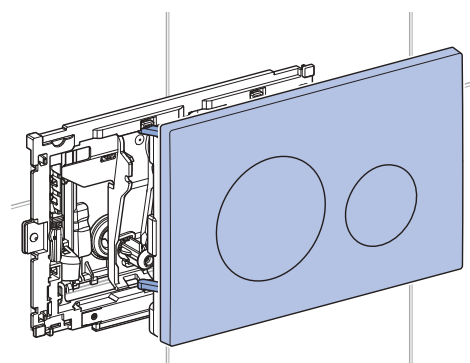
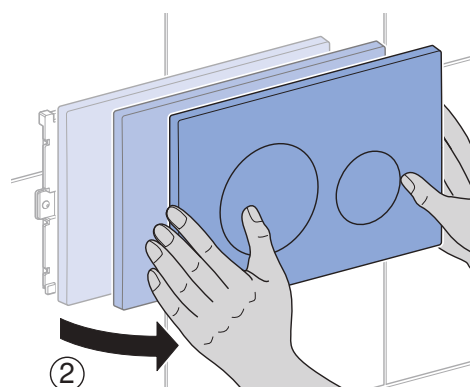
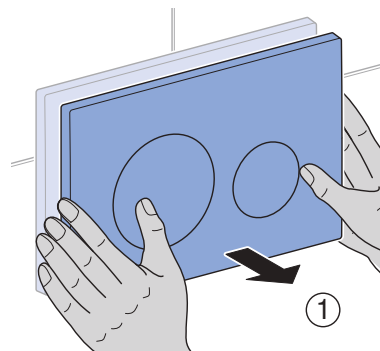


Geberit DuoFresh Annual Servicing Kit:

1. Geberit DuoFresh drawer and filter unit
2. Geberit DuoFresh stick (8) x 3 packs

1

Gently pull the actuator plate forwards (1) and swivel it to the right (2).

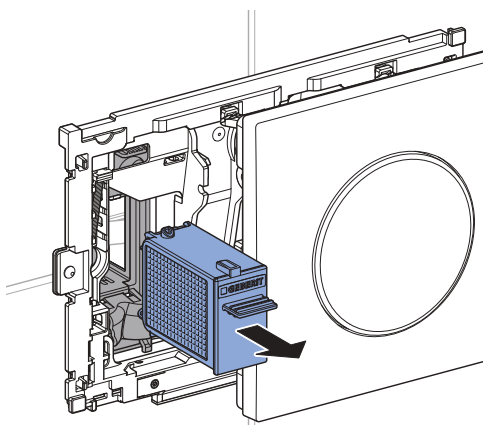
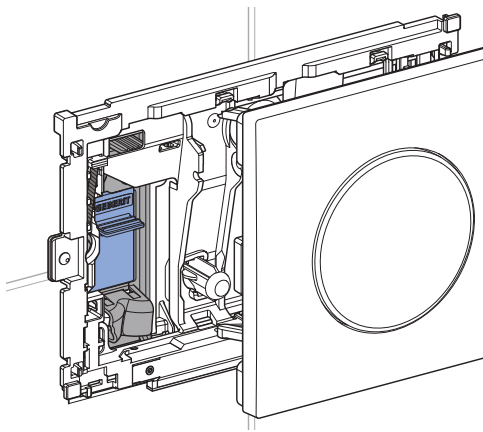


- ✓ The odour extraction unit stops automatically.

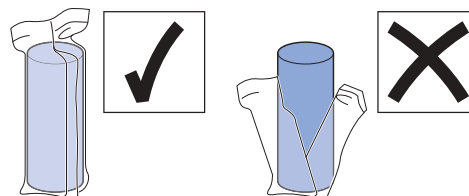


Geberit DuoFresh

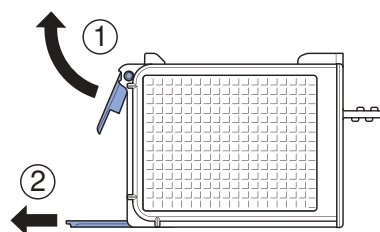
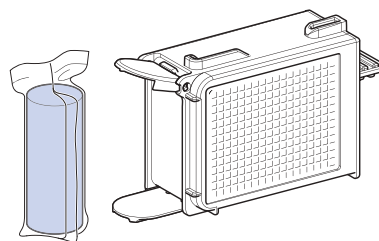
- 2** Pull out the drawer with the filter.



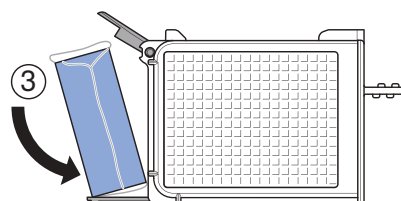
The film on the Geberit DuoFresh stick is water-soluble and does not need to be removed.



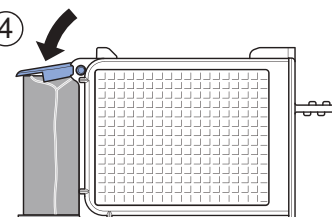
- 3** Insert the Geberit DuoFresh stick into the holder.



2

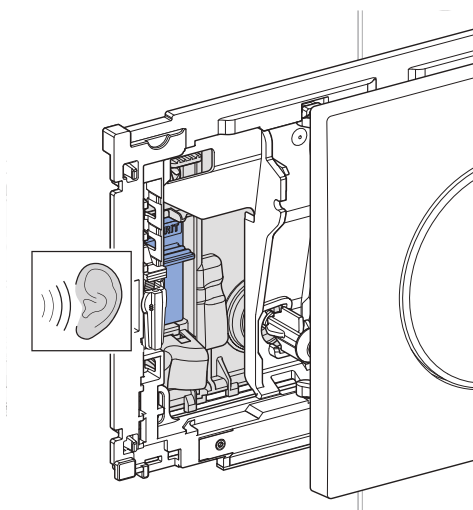
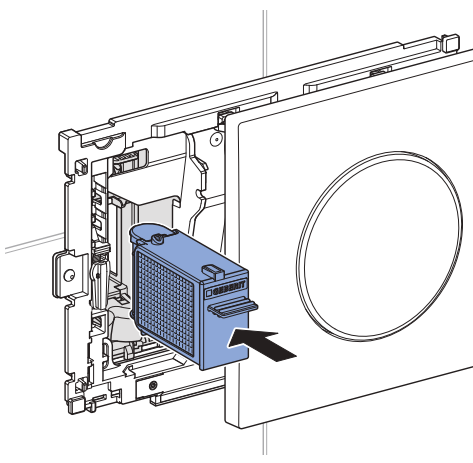


4



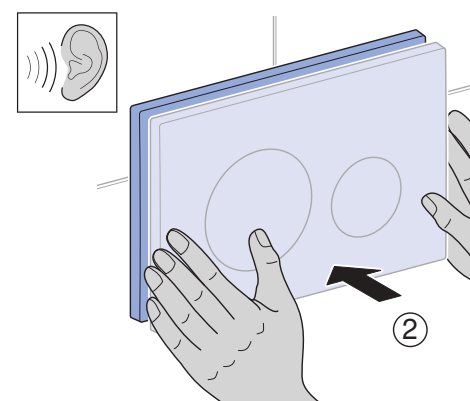
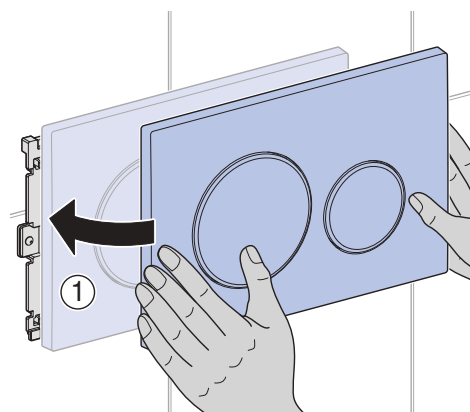
Geberit DuoFresh

- 4** Push in the drawer until the holder noticeably locks into place.



- ✓ The Geberit DuoFresh stick detaches from the holder and falls into the cistern.

- 5** Swivel the actuator plate to the left (1) and gently push it backwards (2) until it noticeably locks into place.



Troubleshooting

Malfunction	Cause	Rectification
The LED behind the actuator plate is flashing red.	Filter spent	► Replace the filter. → See "Replace the filter", page 8.
The device does not work at all or partly incorrectly.	Device failure	► Read the message in the Geberit Home app. ► Contact a skilled person.

Geberit DuoFresh

Maintenance

Replace the filter

Prerequisite

- The odour neutralisation effect has weakened.
- The LED behind the actuator plate is flashing red.
- Prompt in the Geberit Home app.



CAUTION

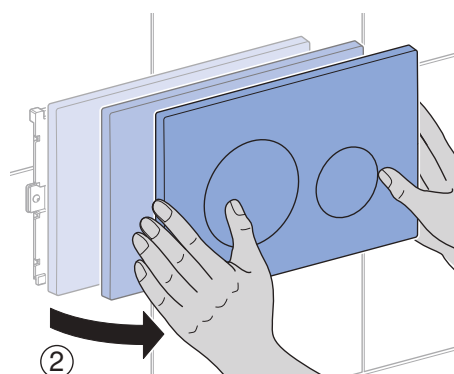
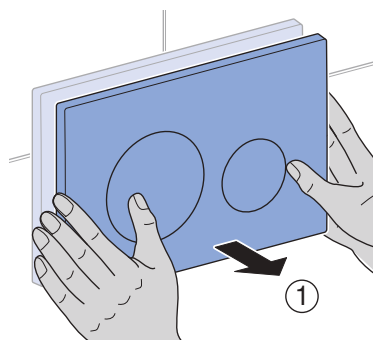
Possible health hazard

Impurities in the filter could lead to contamination of the breathing air.

- Replace the filter annually.

1

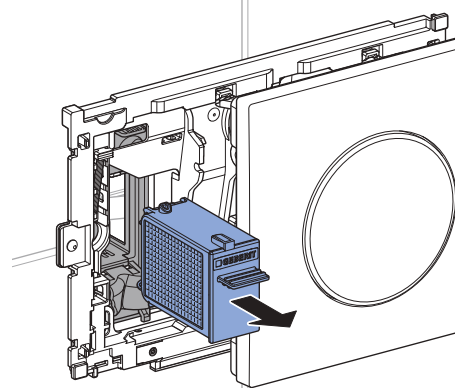
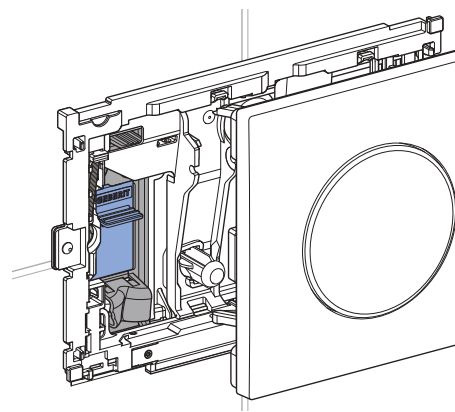
Gently pull the actuator plate forwards (1) and swivel it to the right (2).



- ✓ The odour extraction unit stops automatically.

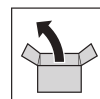
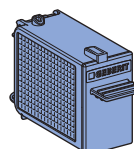
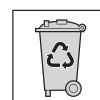
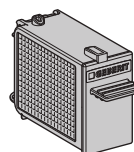
2

Pull out the drawer with the filter.



3

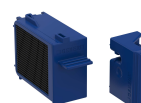
Dispose of the drawer with the filter and have a new drawer ready.



Order the DuoFresh Annual Servicing Kit (product code: 1804984) from your local Reece Bathroom stores.



1804984

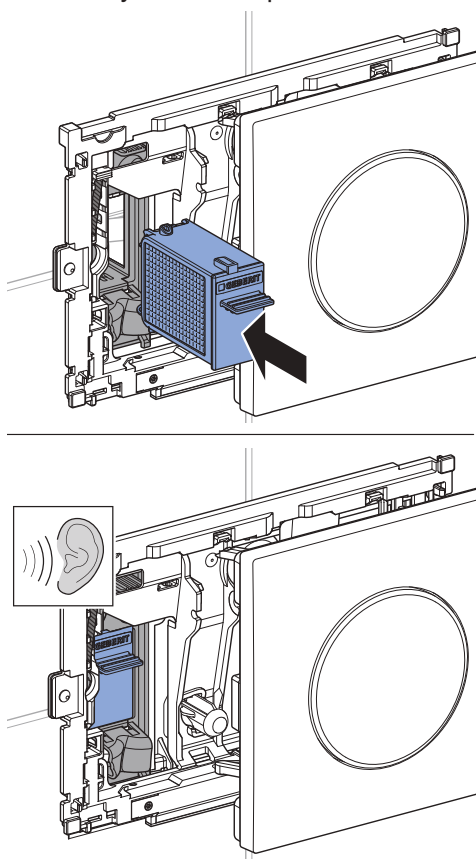


Geberit DuoFresh Annual Servicing Kit:

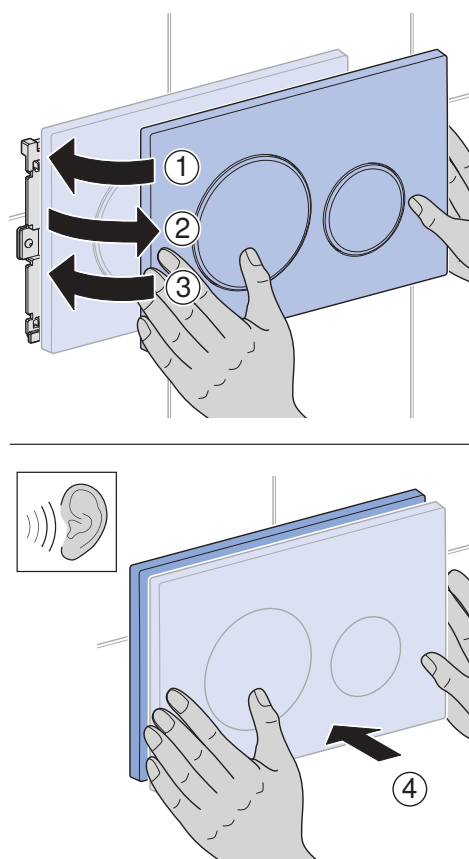
1. Geberit DuoFresh drawer and filter unit
2. Geberit DuoFresh stick (8) x 3 packs

Geberit DuoFresh

- 4** Push in the drawer until the holder noticeably locks into place.



- 5** Confirm the filter replacement:
a) in the Geberit Home app
or
b) within one minute, swivel the actuator plate to the left (1), then to the right (2), then to the left again (3) and gently push it backwards (4) until it noticeably locks into place.



- ✓ The LED behind the actuator plate goes out.



Geberit DuoFresh

Technical data and conformity

Technical data

Protection class	III	
Protection degree	IPX4	
Operating voltage	12 V DC	
Power consumption	7 W	
Power consumption on standby	≤ 0.5 W	
Wireless technology	Bluetooth® Low Energy ¹⁾	Short-range device
Frequency range	2400–2483.5 MHz	24.000–24.250 GHz
Maximum output power	0 dBm	≤ 10 mW

¹⁾ The Bluetooth® brand and its logos are the property of Bluetooth SIG, Inc. and are under licence by Geberit.

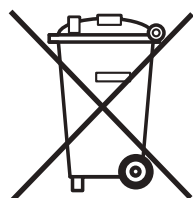
Power Supply Conformity

Hereby, Geberit Pty Ltd AU declares conformity of Geberit DuoFresh power supply unit in compliance with AS/NZS 61558.16:2010+A1+A2+A3 and AS/NZS 61558.1:2008+A1+A2.

Please contact Geberit Pty Ltd on 1800 432 3748 or support.au@geberit.com should you require a copy of the Conformity certificate.

Disposal

Disposal of old electrical and electronic equipment



In accordance with Directive 2012/19/EU (WEEE - Waste Electrical and Electronic Equipment) manufacturers of electrical equipment are obliged to take back old equipment and to dispose of it appropriately. The symbol indicates that the product cannot be disposed of with non-recyclable waste. Old equipment should be returned directly to Geberit where it will be disposed of appropriately. Addresses to which equipment can be returned can be requested from the relevant Geberit sales company.



Geberit DuoFresh

Geberit International AG
Schachenstrasse 77, CH-8645 Jona
documentation@geberit.com
www.geberit.com

