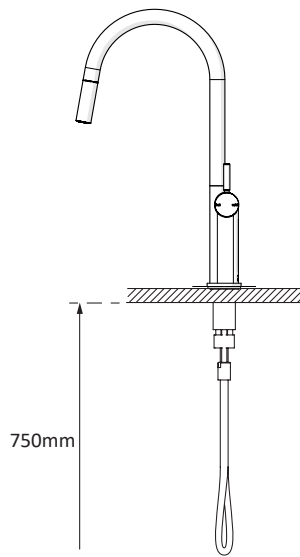




Pullout Sink Mixer

1

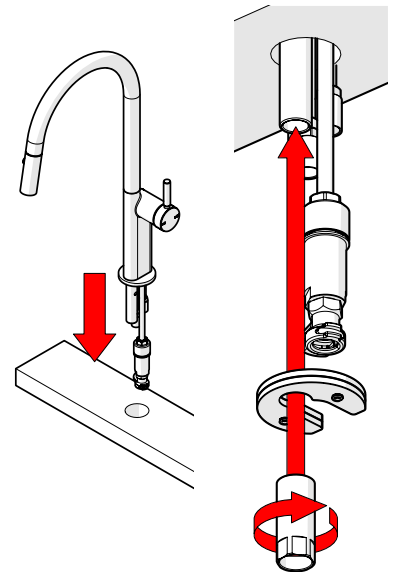
Ensure there is a clear area directly underneath the mixer with 750mm of space.

**2**

Feed the Sprayer Hose through the **35mm** hole and then position the mixer over the hole.

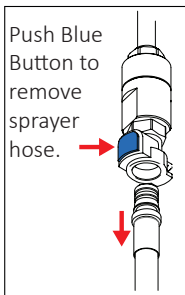
Underneath the Mounting Hole, feed the Rubber Mounting Gasket with the Mounting Plate snapped together onto the Threaded Rod, **Ensure Sprayer Hose is fed through Locknut**

Firmly fasten the Lock Nut with 18mm Tube Spanner

**3**

Screw the Sprayer Hose fitting into the mixer hose outlet. Insert the Sprayer Hose into the fitting until it clicks into place.

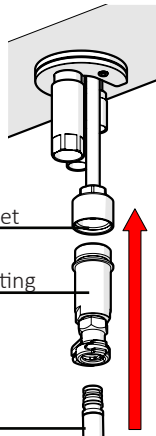
Push Blue Button to remove sprayer hose.



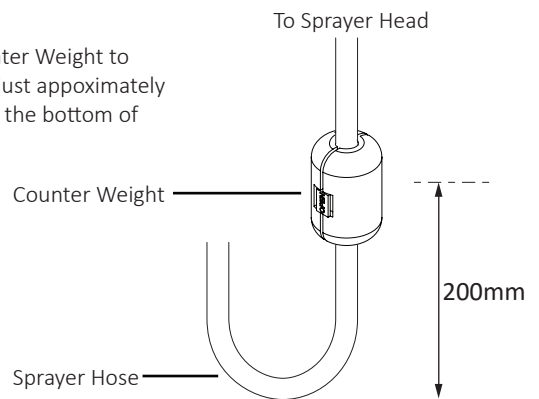
Mixer Hose Outlet

Sprayer Hose Fitting

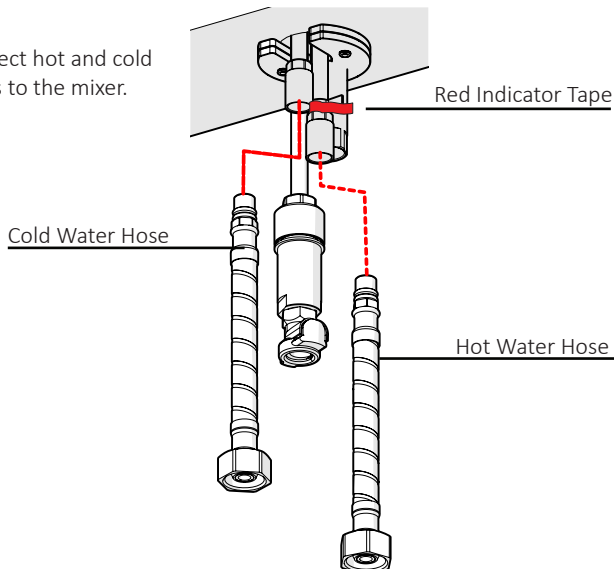
Sprayer Hose

**4**

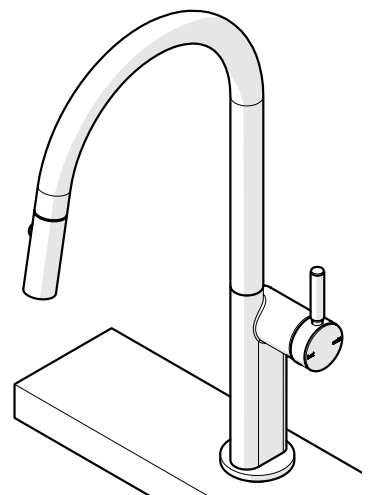
Clip the Counter Weight to the Hose. Adjust approximately 200mm from the bottom of the Hose.

**5**

Connect hot and cold hoses to the mixer.

**6**

TURN ON AND CHECK FOR LEAKS.



Care Details

We recommend the use of soapy water or approved cleaners. This product should not be cleaned with abrasive materials. Damage caused by any improper treatment is not covered by the product warranty. Refer to Warranty Conditions

Installation should comply with Australian standard AS3500.1 or relevant local authority requirements. Showers may not be suitable for use within:

- Gravity-fed water systems
- Some instantaneous hot water systems

Any flow controller incorporated in the outlet to be tightened to prevent removal by hand. As Per AS3718

Plumbers, please ensure a copy of the installation instruction is left with the end user for future reference.

