

# SHAWS

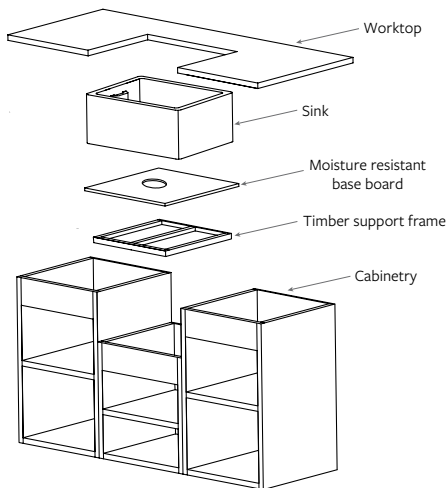
## LANCASTER SINGLE BOWL 840 FIRECLAY BUTLER SINK

### INSTALLATION INSTRUCTIONS

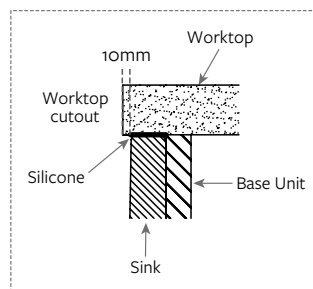
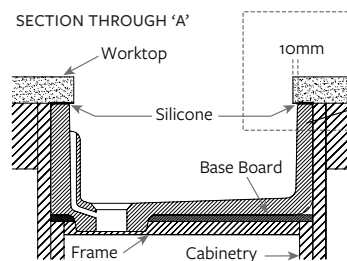
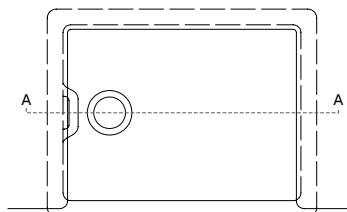
Due to the firing process at our factory, all Shaws handmade sinks have a +/- 2% tolerance in size., or up to a maximum of 6mm variance in length or width. It is therefore advisable to NOT cut or drill worktops or units until you have checked your individual sink size. Please inspect your sink on delivery. The top and sides of your sink should be square within +/- 2% tolerance. The bottom of the internal sink bowl is designed flat with a slight graduated drain.

- When fitting a Shaws sink, it is recommended that 2 persons are used to lift the sink into place.
- No two sinks are alike, so installation templates are not available. You will require the product to trace the template for worktops and cover panels or surrounds.
- Do not adhere the sink to the substrate board. If any warranty issues arise, this prevents easy removal and may result in a fee to the customer.
- Due to the weight of a Shaws sink, it is important that the cabinetry being used is of a suitable strength and sound construction. A typical installation includes a timber support frame and a quality moisture resistant base board.
- The wooden frame must be fixed to the cabinetry using appropriate screws or bolts
- Holes should be cut into the base board to allow the fitting of the waste to the sink. Additional smaller holes may be required if you are fitting an overflow kit.
- When fitting your benchtop in an undermount installation, you have the choice of a half reveal or no reveal (refer to diagrams below). In both methods, it is of the utmost importance to silicone between the sink and worktop.

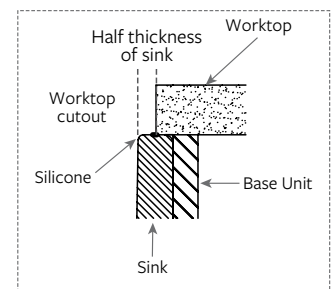
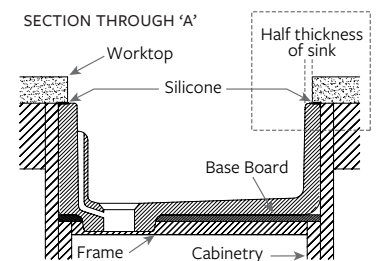
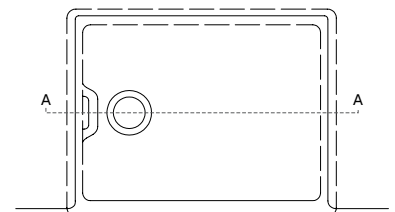
#### INSTALLATION ORDER



#### WORKTOP - NO REVEAL



#### WORKTOP - HALF REVEAL



Plumbers, please ensure a copy of the installation instructions is left with the end user for future reference