



## Posh Domaine Laundry Trough

### INSET INSTALLATION INSTRUCTIONS

**Note:**

If wall mounted tapware is to be used, consideration should be made to length of outlet and positioning of the trough on bench top.

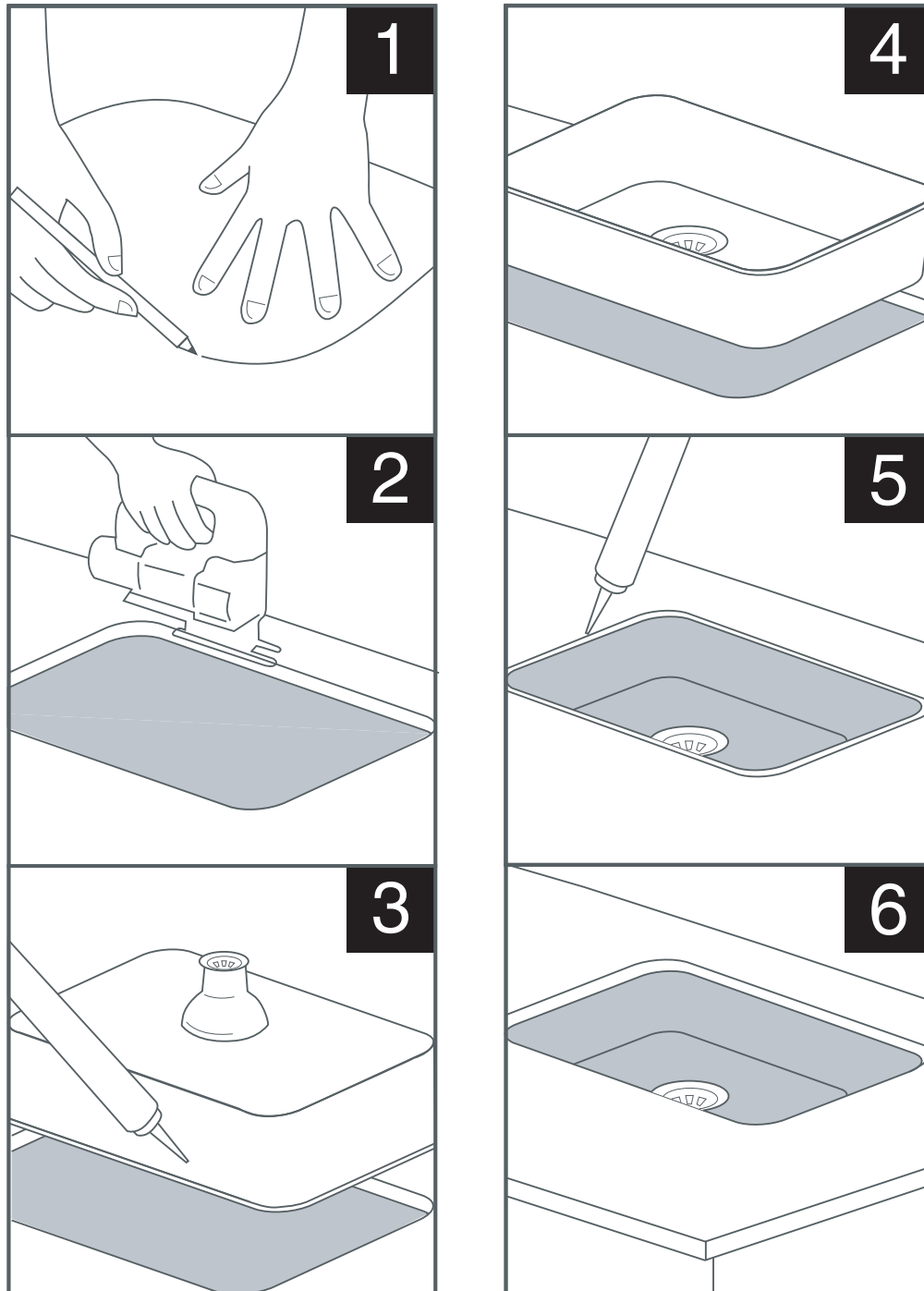
1. Use the template provided to trace the cut-out on both the benchtop and underlay/timber lining.
2. Cut out the bench top
3. Apply silicone sealant around the underside edge of the sink.
4. Position the sink into the benchtop and apply even pressure to the frame until the sink is as close to the benchtop surface as possible.
5. Install all securing clips.
6. Tighten the sink to the benchtop and ensure no gaps exist between sink and benchtop.
7. Remove excess silicone residue.

### UNDERMOUNT INSTALLATION:

#### Stone & Solid Benchtops

1. Use the template provided to trace the cut-out on both the benchtop and underlay/timber lining.
2. Cut out benchtop and the underlay/timber lining
3. **If using the sandwich technique** silicone both the underneath rim of the undermount bowl and around the underlay/timber lining cut out.
4. **If using fixing clips**, affix wooden blocks to the underside of the benchtop to screw fixing clips into.
5. Place the sink into position.
6. Silicone around the lip of the sink to seal between the benchtop and the sink surfaces.

## Posh Domaine Laundry Trough



### CLEANING RECOMMENDATIONS

We recommend the use of soapy water or approved cleaners.  
This product should not be cleaned with abrasive materials.

Damage caused by any improper treatment is not covered by the product warranty - refer to Warranty Conditions

**Plumbers, please ensure a copy of the Installation Instructions are left with the end user for future reference**