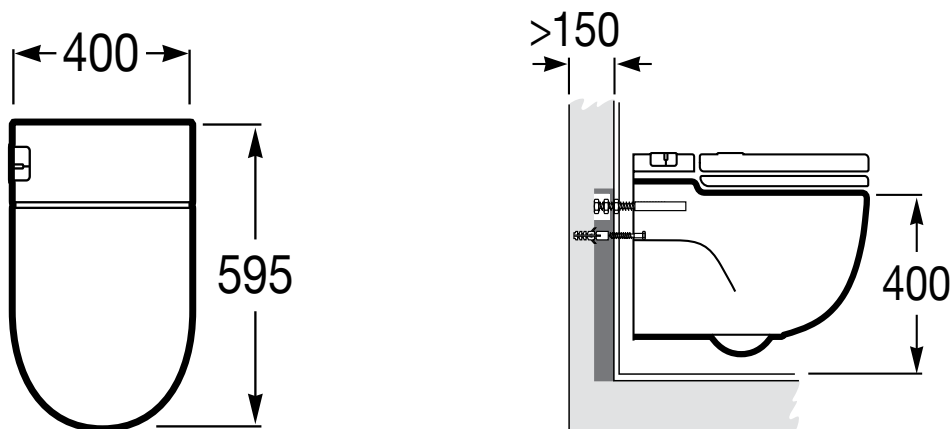


ROCA

MERIDIAN IN TANK WALL HUNG PAN

I SUPPORT (SOLID WALL)



Dimensions are nominal measurements only

SPECIFICATIONS

Recommended Use	Domestic, Hotel and Commercial
Material	Vitreous China
Colour	White
Weight	Pan: 45kg
Water Inlet Position	Back Inlet
Inlet Valve	Maximum working pressure 500kPa
Seat	Matching top-fix, soft-close seat supplied with suite
Rim Configuration	Box Rim
Bowl Configuration	P Trap
Set Out	P Trap: Refer to supplied template 60mm end of spigot to finished wall.
Pan Fixing	Screwed to wall using fixings (supplied) and bedded with sealant
Installation	As per AS/NZS 3500 and AS/NZS 3000
Electrical	240VAC, 50Hz, 17W, IPX4



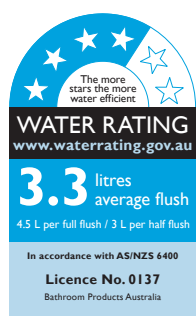
To see the complete ROCA range go to
www.reece.com.au/bathrooms

CLEANING RECOMMENDATIONS

We recommend the use of soapy water or approved cleaners.

This product should not be cleaned with abrasive materials.

Damage caused by any improper treatment is not covered by the product warranty. Refer to Warranty Conditions.



IEC 60335.1
IEC 60335.2.84
EN 55014.1

Disclaimer: Products in this specification manual must by regulation be installed by licensed and registered trade people. The manufacturer/distributor reserves the right to vary specifications or delete models from their range without prior notification. Dimensions are nominal measurements only. Dimensions and set-outs listed are correct at time of publication however the manufacturer/distributor takes no responsibility for printing errors.

Tech Page Version 2

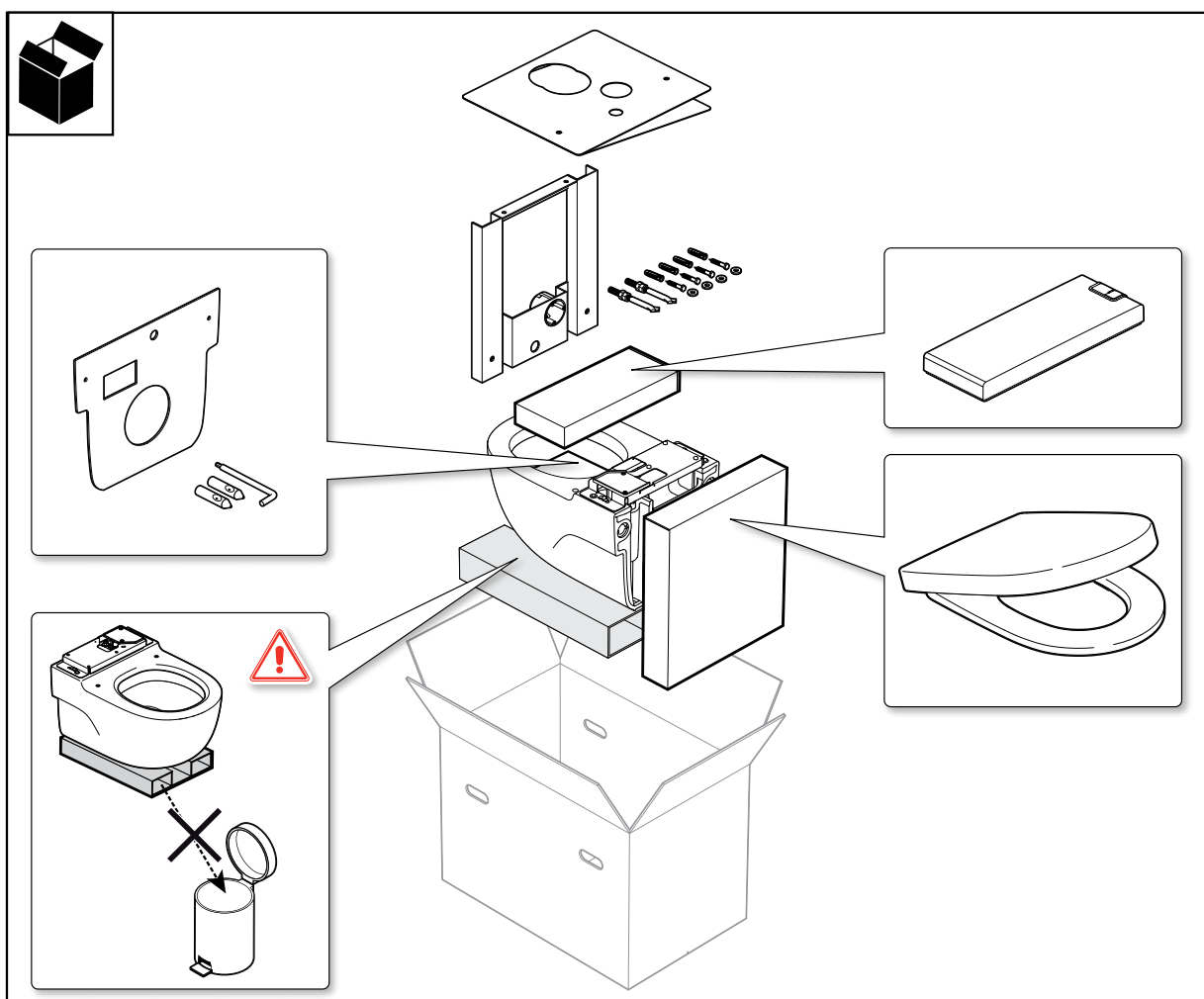
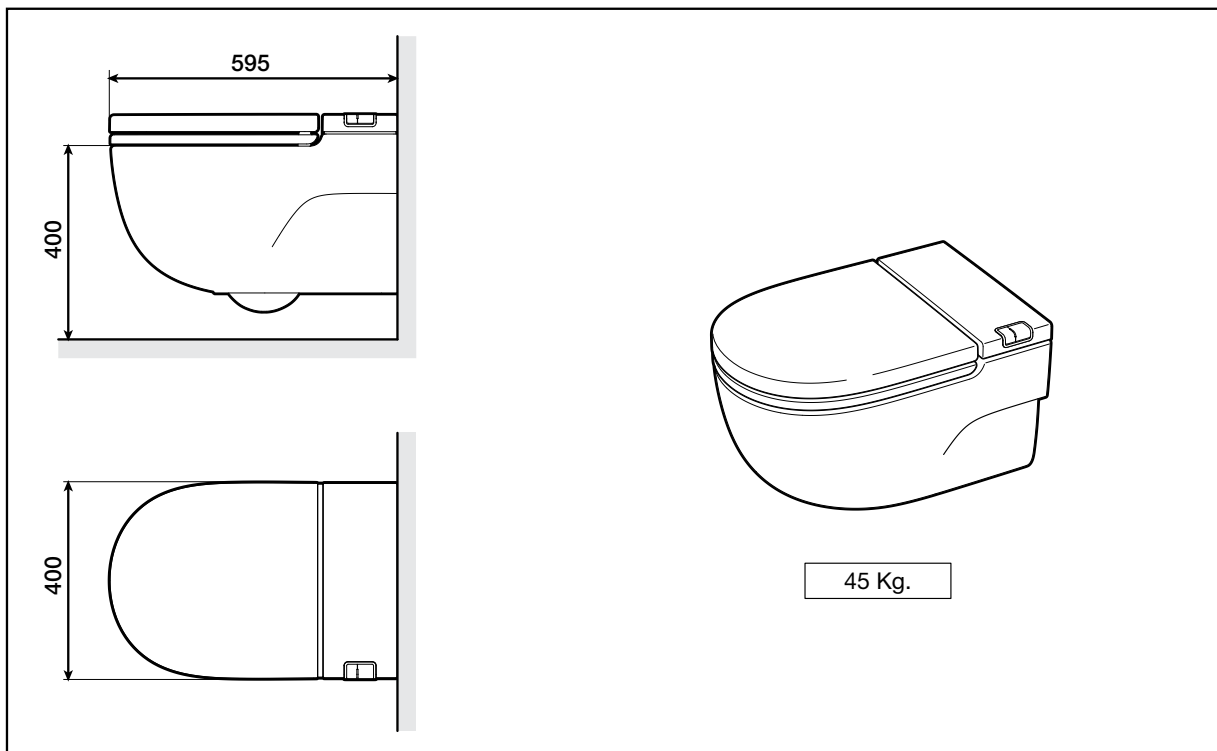


ROCA

MERIDIAN IN TANK WALL HUNG PAN I SUPPORT (SOLID WALL)

INSTALLATION INSTRUCTIONS

Note- This product will be required to be installed by a licenced plumber and electrician



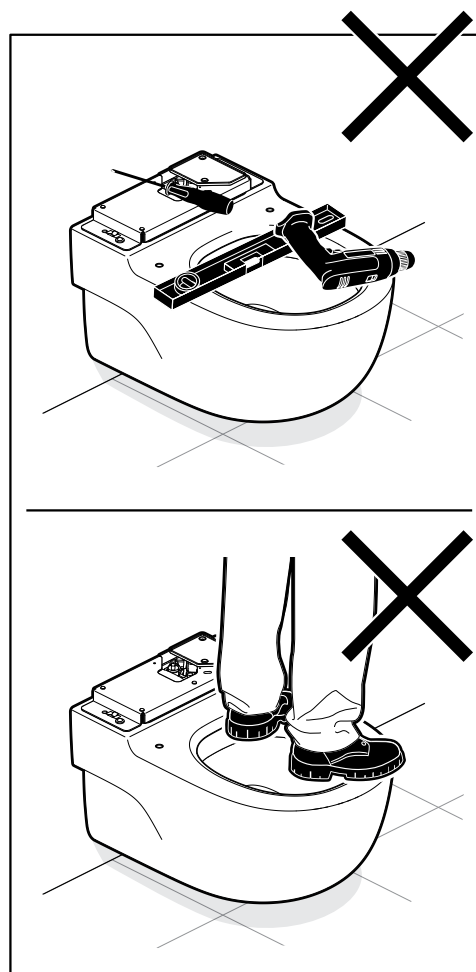
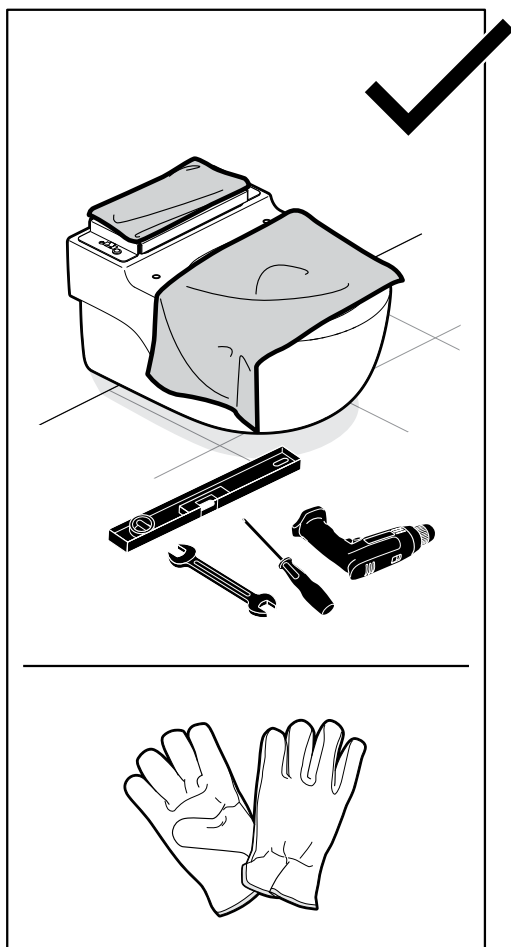
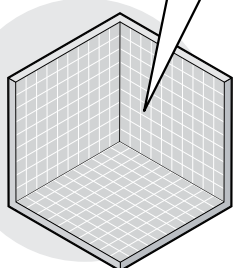
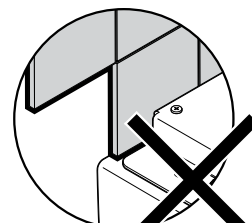
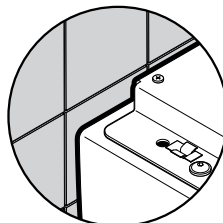
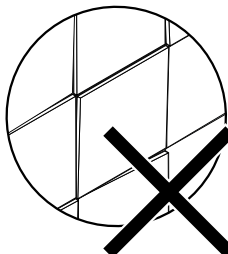
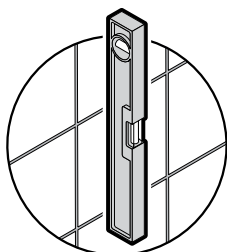
Plumbers, please ensure a copy of the installation instructions is left with the end user for future reference

Roca

reece

ROCA

MERIDIAN IN TANK WALL HUNG PAN | SUPPORT (SOLID WALL)



Plumbers, please ensure a copy of the installation instructions is left with the end user for future reference

Roca
reece

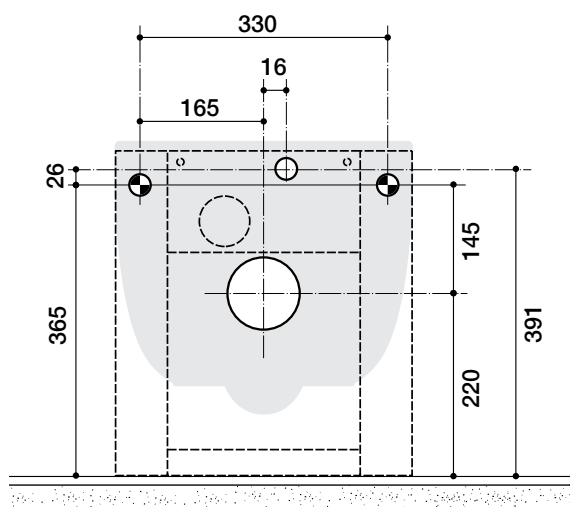
ROCA

MERIDIAN IN TANK WALL HUNG PAN I SUPPORT (SOLID WALL)

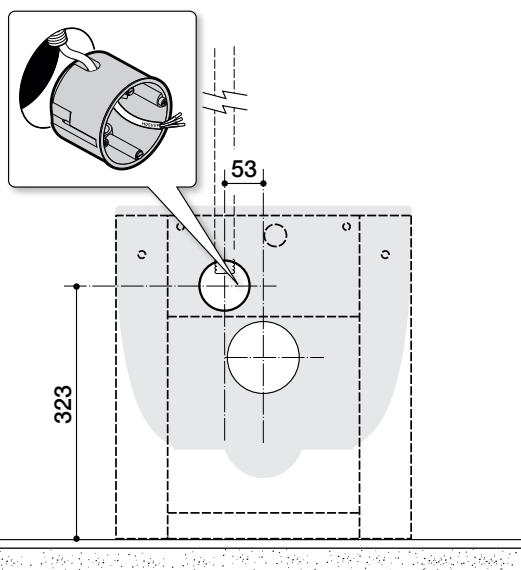


• Fixings

○ Pipes



⚡ Electrical



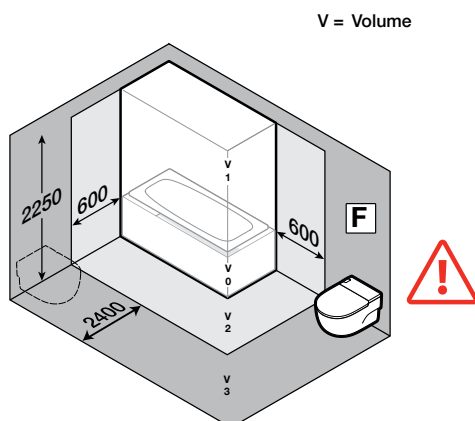
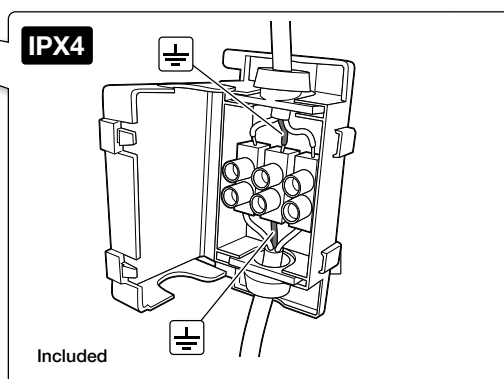
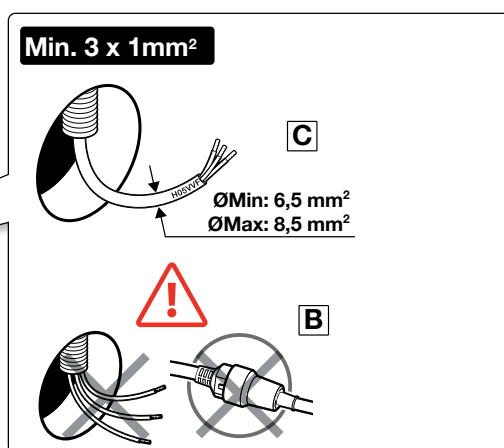
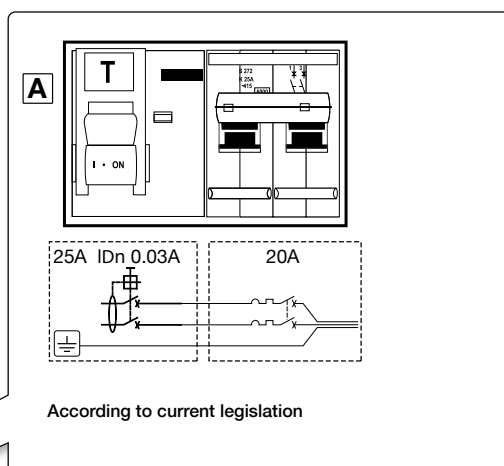
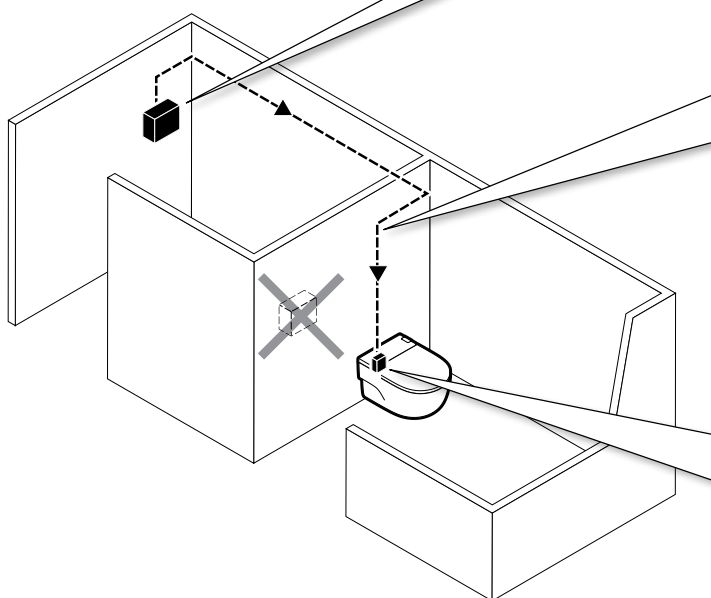
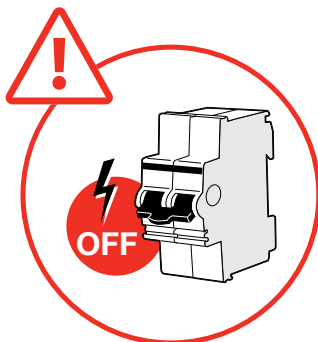
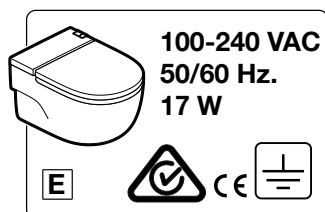
Plumbers, please ensure a copy of the installation instructions is left with the end user for future reference

Roca

reece

ROCA

MERIDIAN IN TANK WALL HUNG PAN I SUPPORT (SOLID WALL)



A The electrical installation must be protected by means of a IDn 0,03A and 25A differential switch and a magnetothermal switch of 20A. Both switches must be placed outside the bathroom.

B The power connection of this product must be permanently connected to a fixed electricity line. Placement of a plug is not acceptable.

C The electrical line to be installed must be a flexible cable consisting of three wires (active, neutral, earth) of at least 1mm² of section exclusively dedicated to the WC. In the event that, due to failure, it is necessary to handle or replace the power cable, this must only be done by Technical Service staff.

D The power connection must only be done inside the included IPX4 electrical box. In case of making a junction of the electrical line must be also used a box of this type.

E The range of function of the WC is 240V, 50Hz.

F The WC must be installed in the protection volume 3 of the bathroom. No electrical device must be introduced inside the WC.

NOTE: This product must be installed by qualified personnel, in according with the national current regulation.

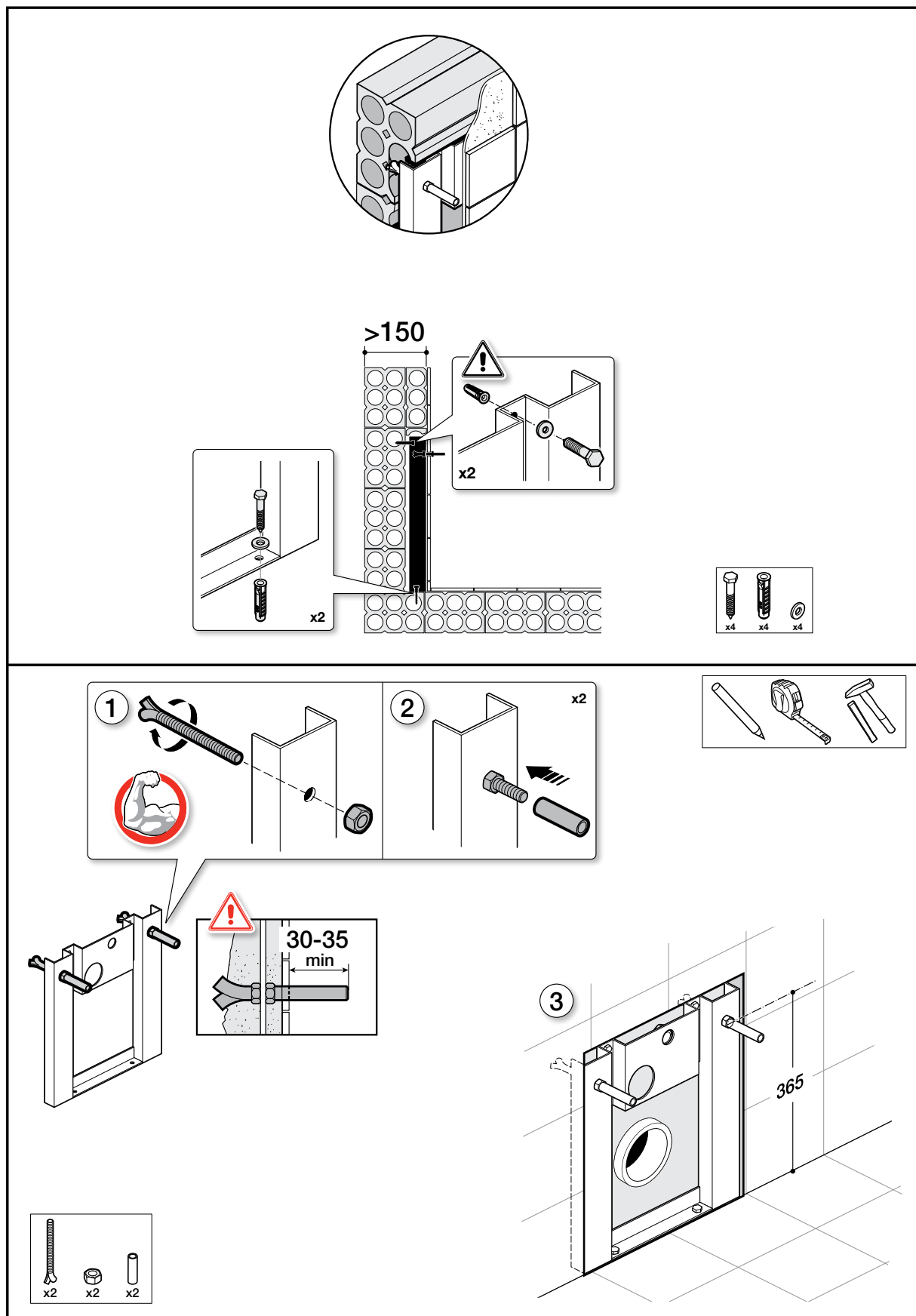
Plumbers, please ensure a copy of the installation instructions is left with the end user for future reference

Roca

reece

ROCA

MERIDIAN IN TANK WALL HUNG PAN I SUPPORT (SOLID WALL)



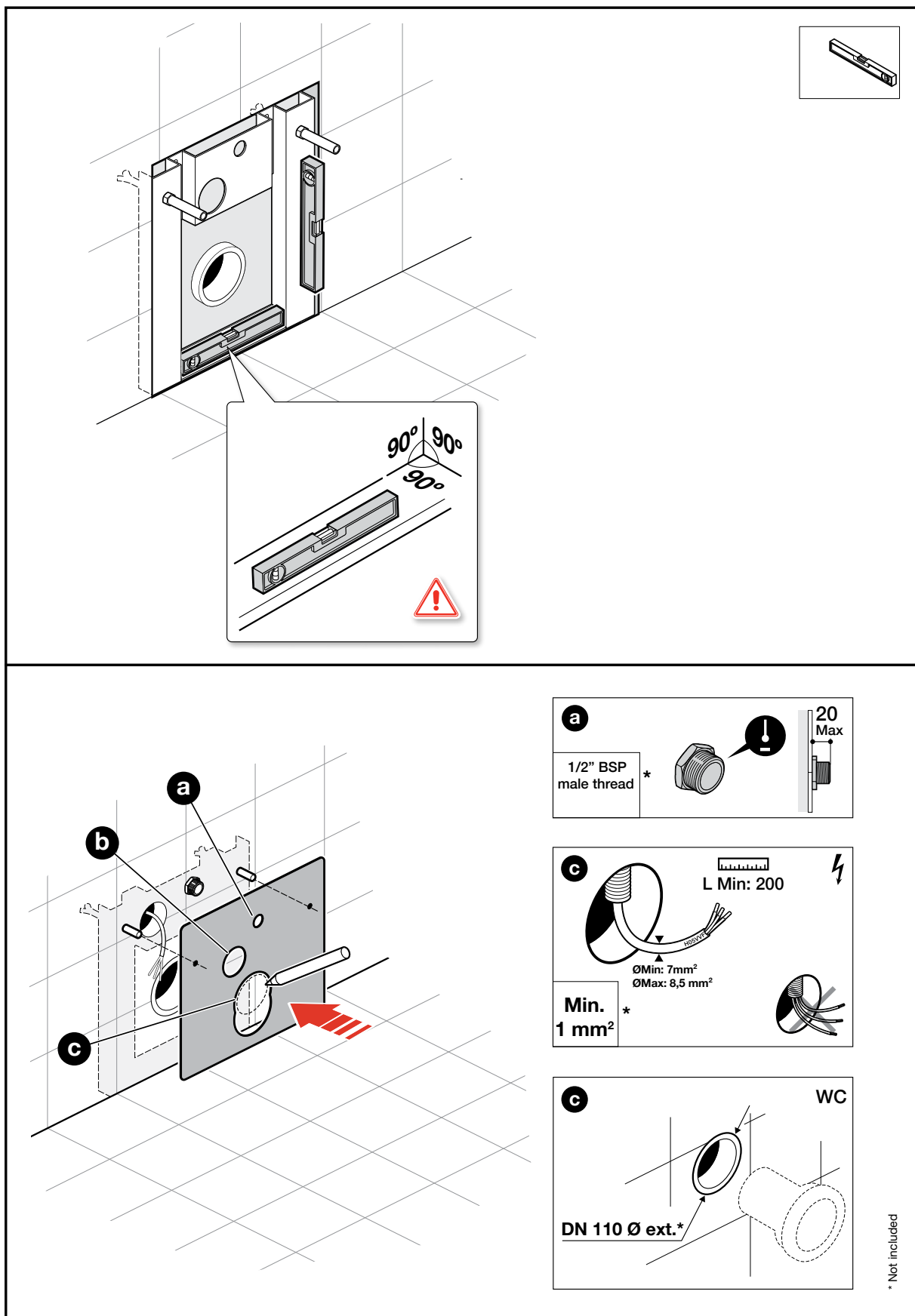
Plumbers, please ensure a copy of the installation instructions is left with the end user for future reference

Roca

reece

ROCA

MERIDIAN IN TANK WALL HUNG PAN I SUPPORT (SOLID WALL)



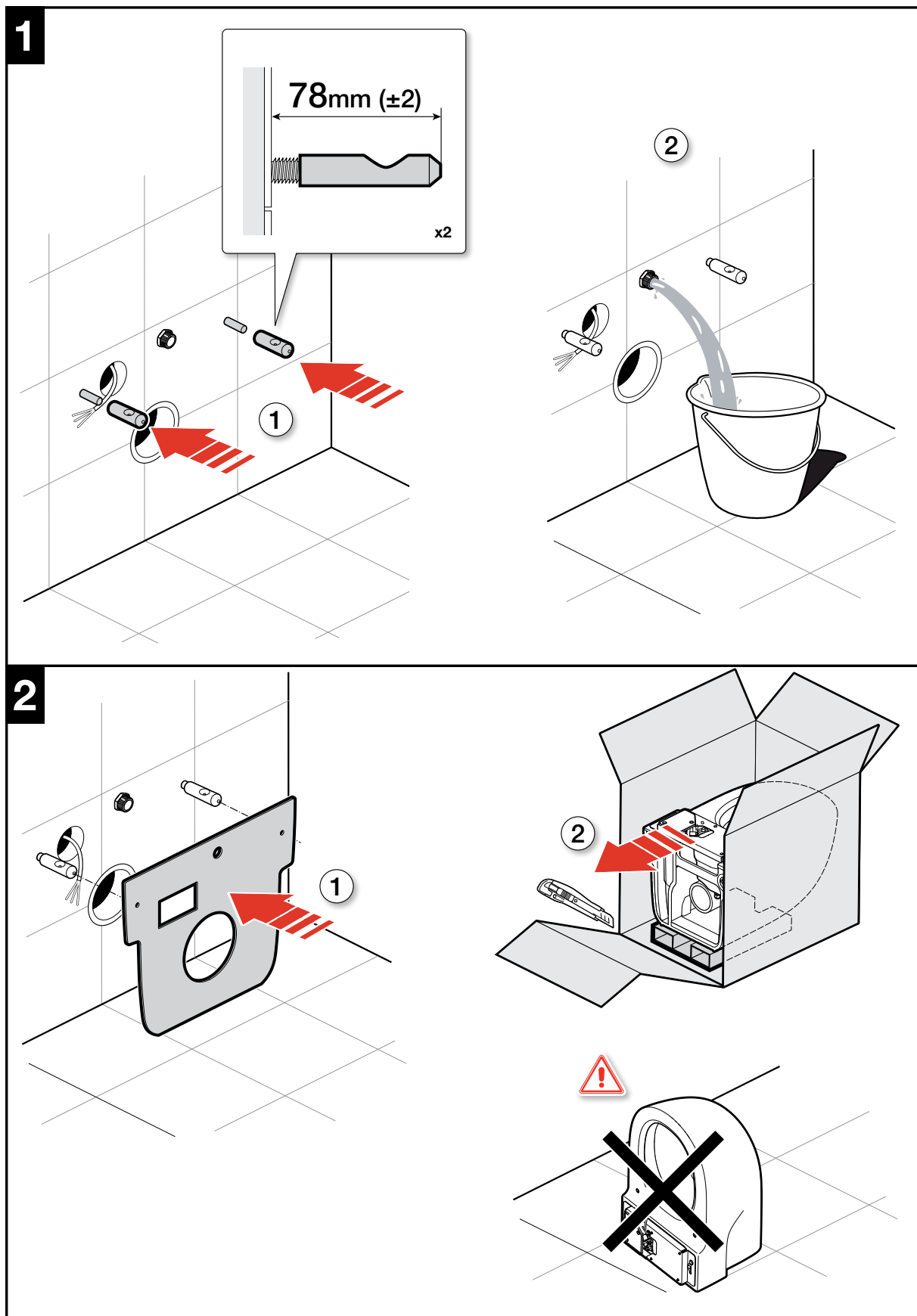
Plumbers, please ensure a copy of the installation instructions is left with the end user for future reference

Roca

reecer

ROCA

MERIDIAN IN TANK WALL HUNG PAN | SUPPORT (SOLID WALL)



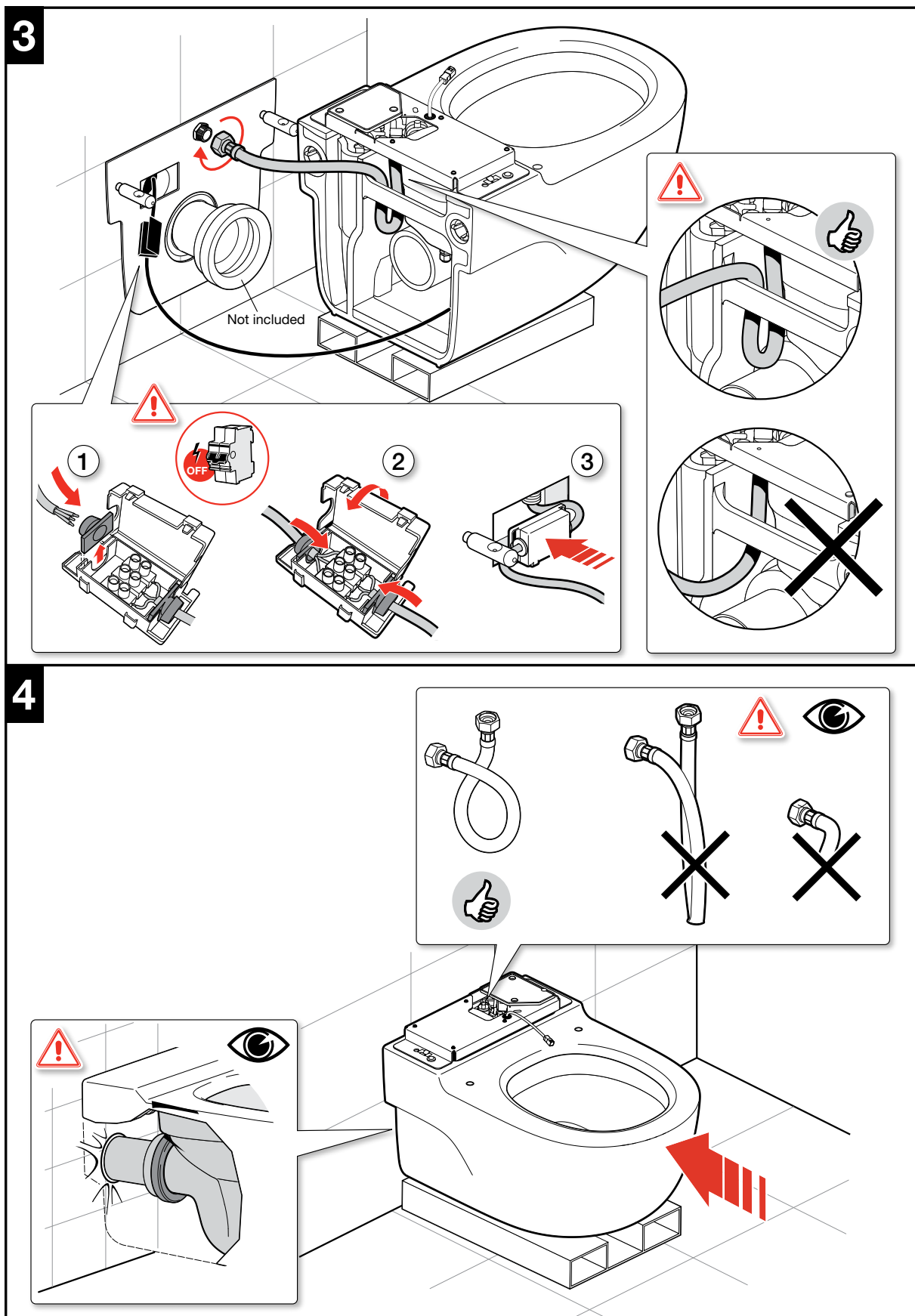
Plumbers, please ensure a copy of the installation instructions is left with the end user for future reference

Roca

reece

ROCA

MERIDIAN IN TANK WALL HUNG PAN I SUPPORT (SOLID WALL)

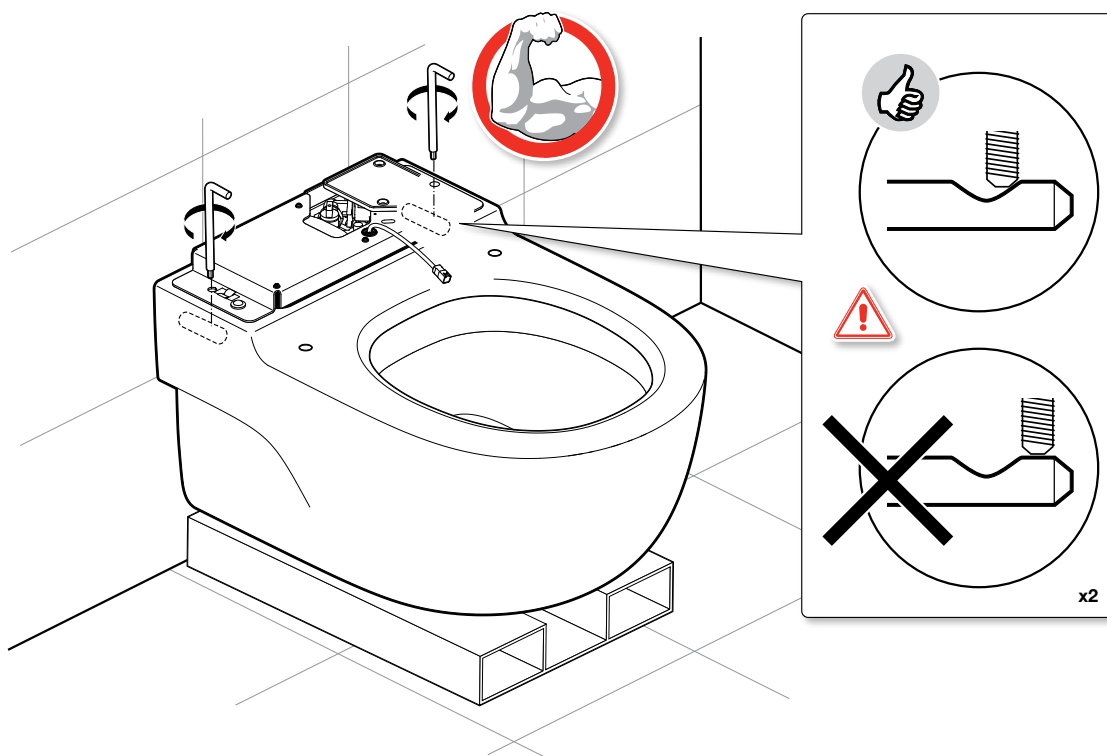
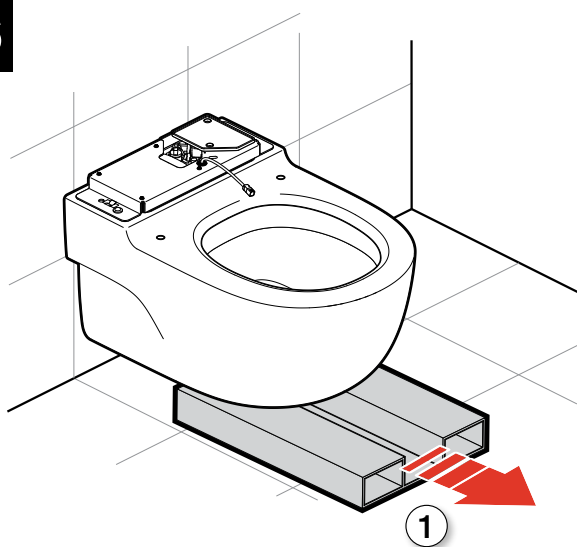


Plumbers, please ensure a copy of the installation instructions is left with the end user for future reference

Roca

reece

ROCA

**MERIDIAN IN TANK WALL HUNG PAN I SUPPORT
(SOLID WALL)****5****6**

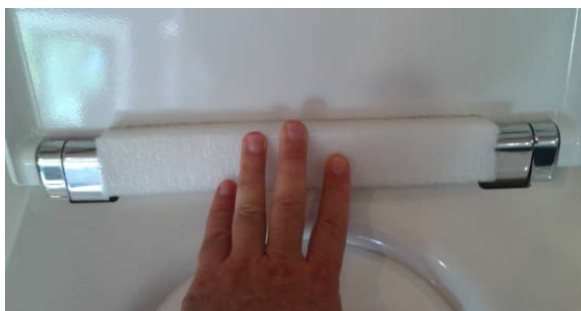
Plumbers, please ensure a copy of the installation instructions is left with the end user for future reference

Roca**reece**

ROCA**MERIDIAN IN TANK WALL HUNG PAN I SUPPORT
(SOLID WALL)****SEAT INSTALLATION**

1. Cover damper
2. Seat damper
3. Grub screw cover
4. Washer
5. Screws Fixings
6. Toggles
7. Spacer
8. Allen key (for Screw fixing)
9. Allen key (for Grub Screw)

Plumbers, please ensure a copy of the installation instructions is left with the end user for future reference

ROCA**MERIDIAN IN TANK WALL HUNG PAN I SUPPORT
(SOLID WALL)****SEAT INSTALLATION**

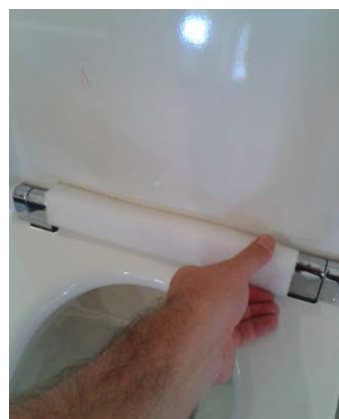
Plumbers, please ensure a copy of the installation instructions is left with the end user for future reference

Roca**reece**

ROCA

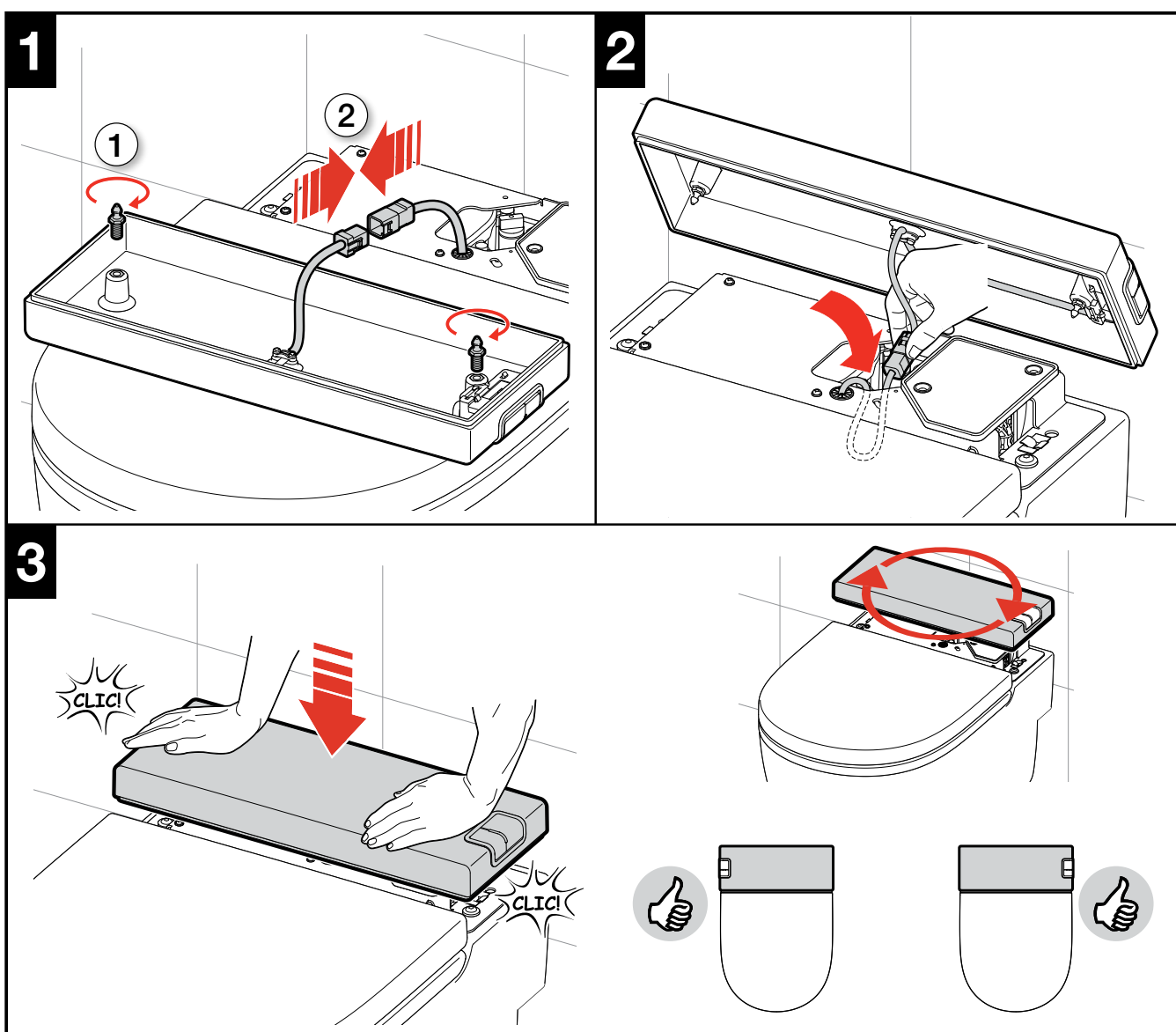
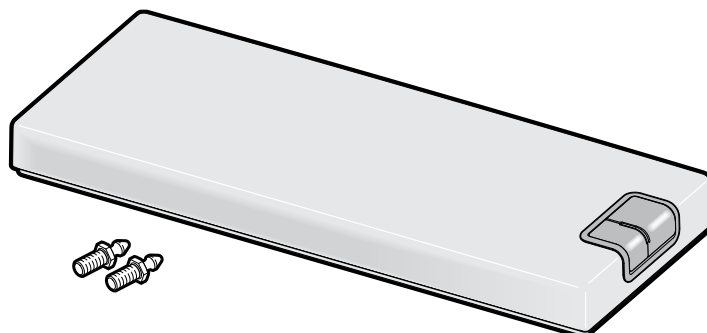
MERIDIAN IN TANK WALL HUNG PAN I SUPPORT (SOLID WALL)

SEAT INSTALLATION



Plumbers, please ensure a copy of the installation instructions is left with the end user for future reference

ROCA

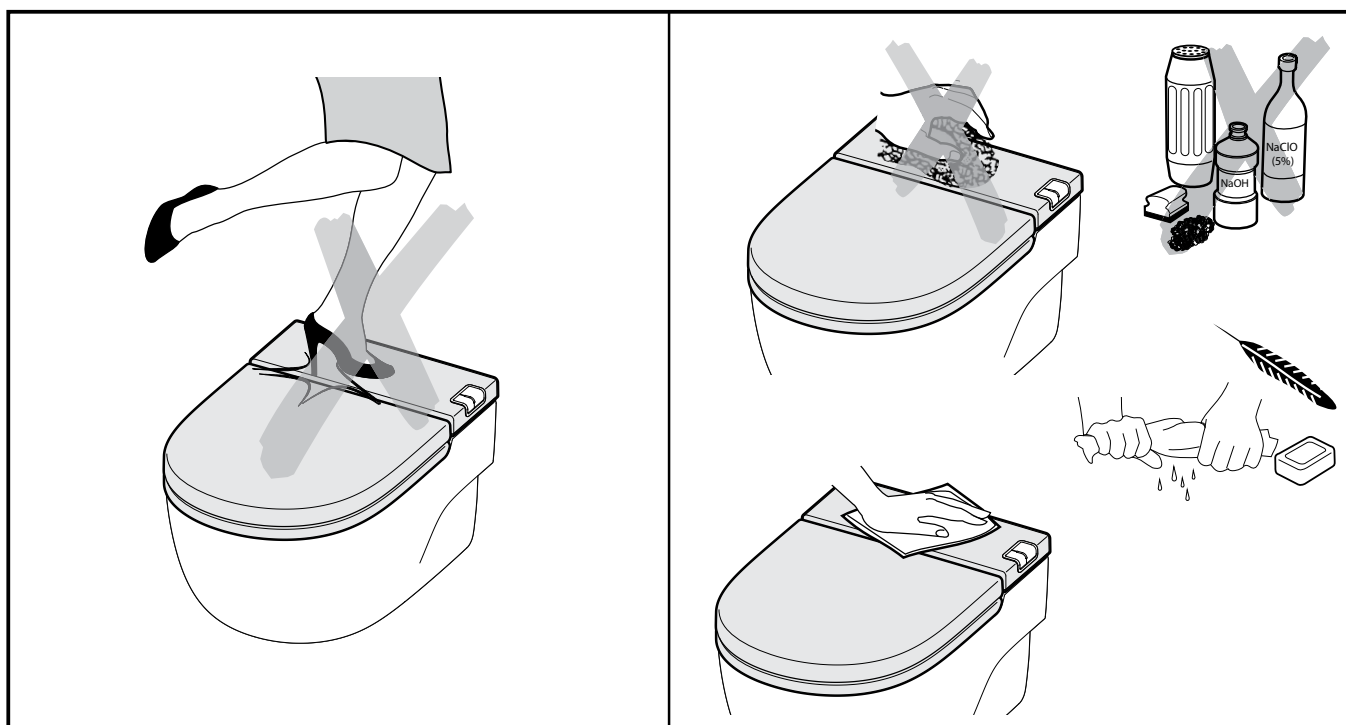
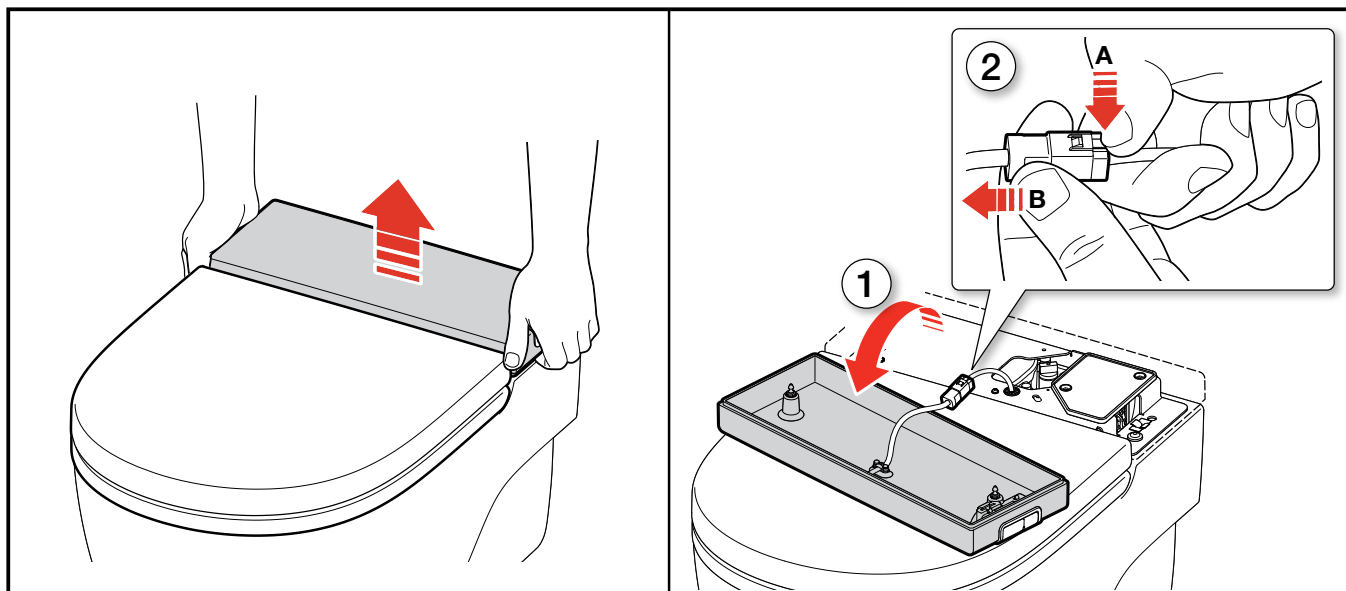
**MERIDIAN IN TANK WALL HUNG PAN | SUPPORT
(SOLID WALL)****BACK COVER INSTALLATION**

Plumbers, please ensure a copy of the installation instructions is left with the end user for future reference

ROCA

MERIDIAN IN TANK WALL HUNG PAN I SUPPORT (SOLID WALL)

BACK COVER INSTALLATION



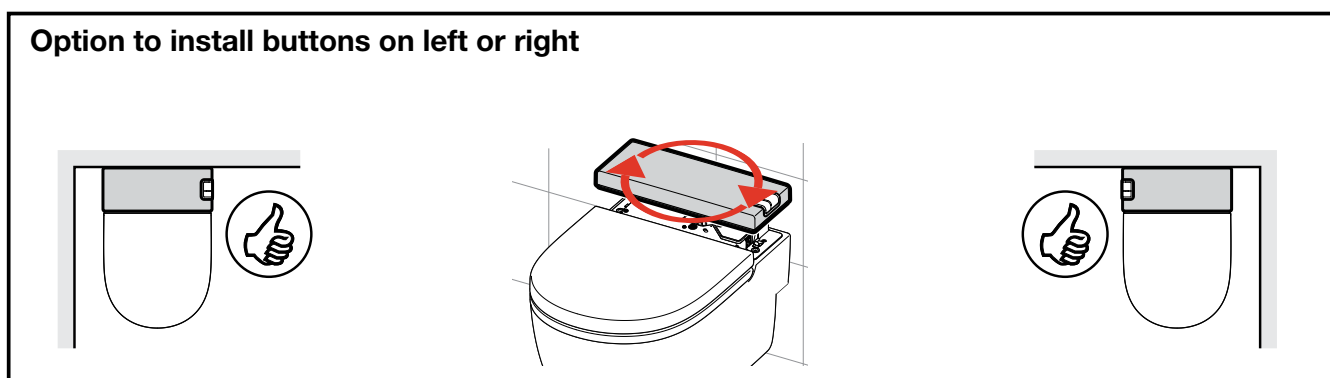
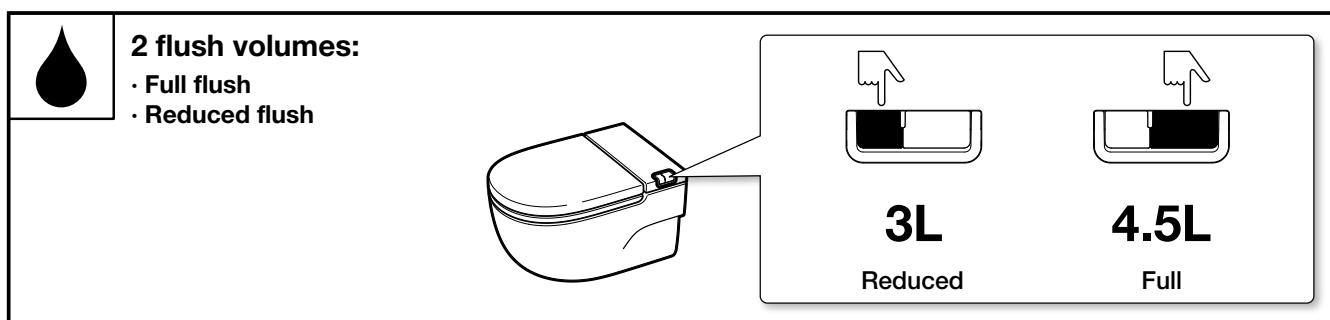
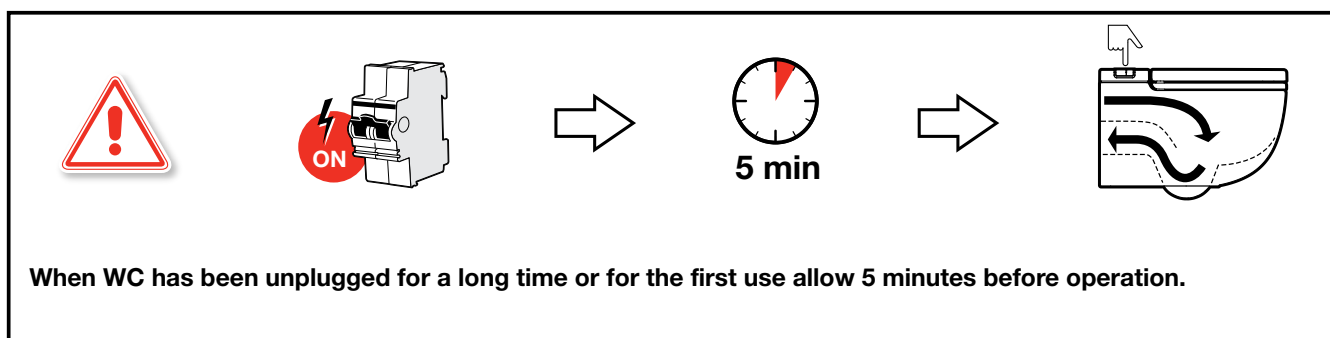
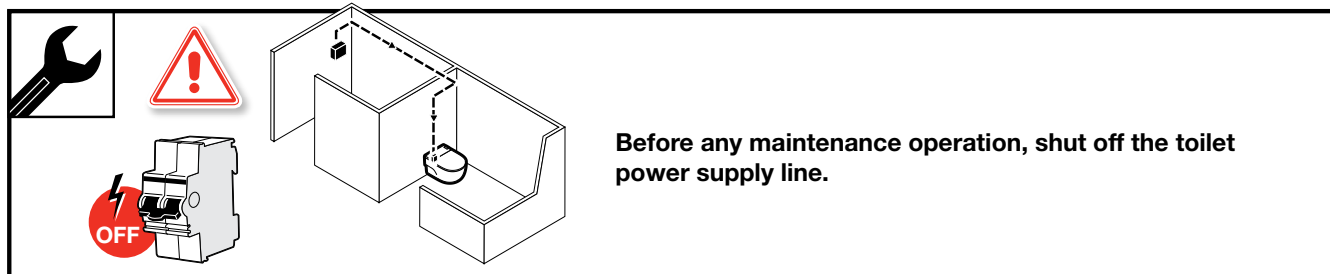
Plumbers, please ensure a copy of the installation instructions is left with the end user for future reference

Roca
reece

ROCA

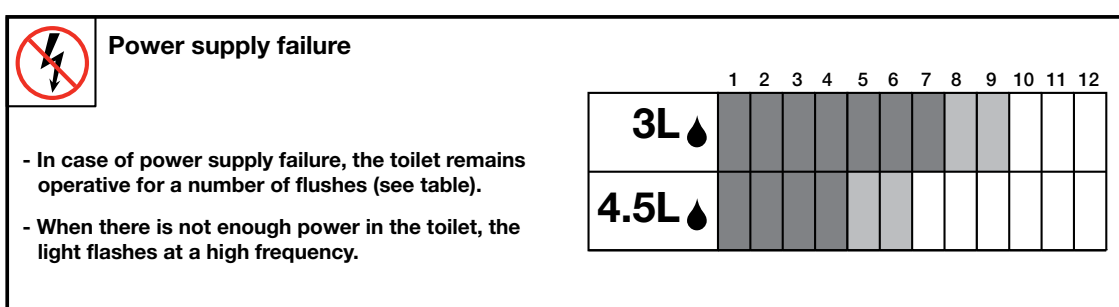
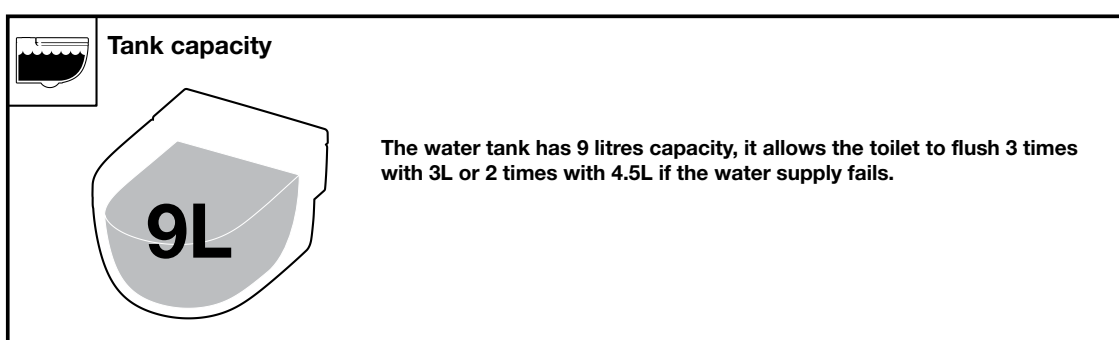
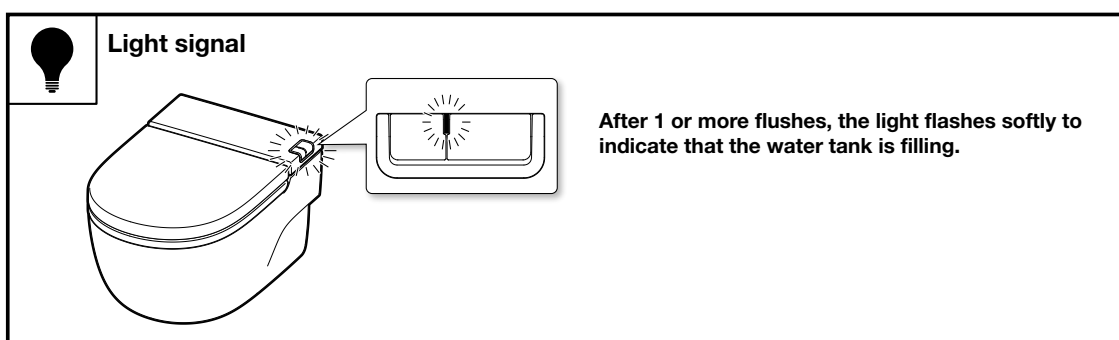
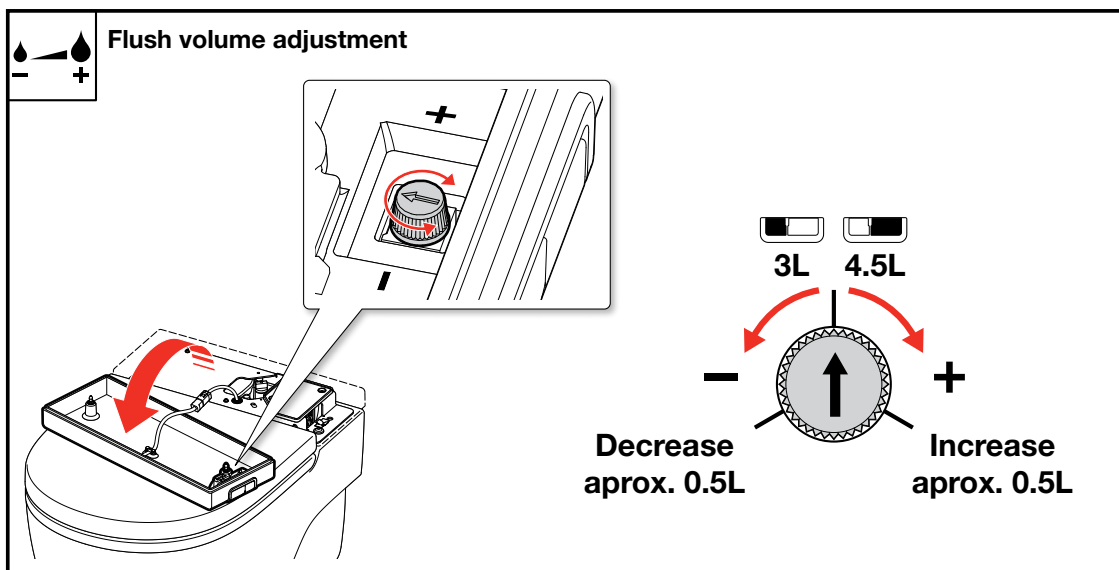
MERIDIAN IN TANK WALL HUNG PAN I SUPPORT (SOLID WALL)

MAINTENANCE



ROCA

MERIDIAN IN TANK WALL HUNG PAN I SUPPORT (SOLID WALL)



Plumbers, please ensure a copy of the installation instructions is left with the end user for future reference

Roca

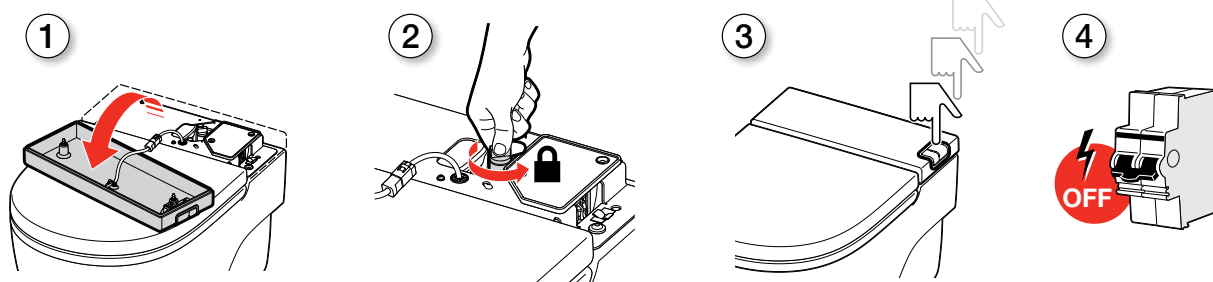
reece

ROCA

MERIDIAN IN TANK WALL HUNG PAN I SUPPORT (SOLID WALL)



In case of long periods without use



When not using for a long period (especially in cold places to avoid the risk of freezing of the water in the tank, which could damage the toilet):

- ① Remove rear cover
- ② Close the stop valve
- ③ Flush until no water flushes
- ④ Shut off power supply line



Temperature usage range

❄️ **5°C**  **45°C** ☀️

It is not recommended to install in places out of this range



Range of inlet pressure

50 kPa ~ 500 kPa

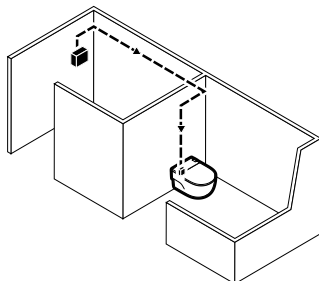
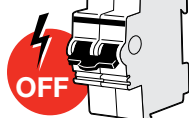
It is not recommended to install in places out of this range

ROCA

MERIDIAN IN TANK WALL HUNG PAN I SUPPORT (SOLID WALL)

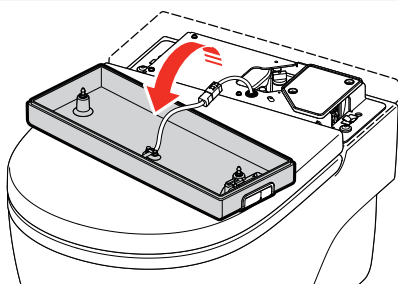


Maintenance

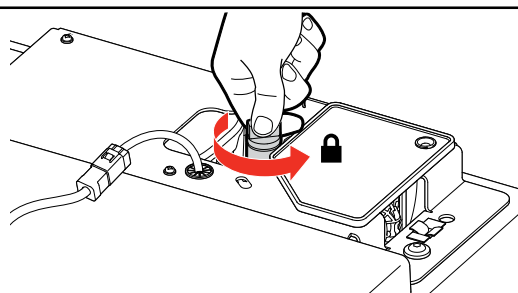


Before replacing the mechanism, shut off the toilet power supply line.

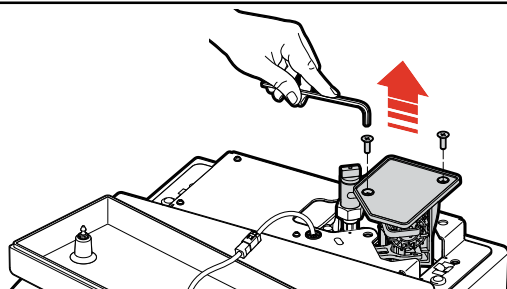
1



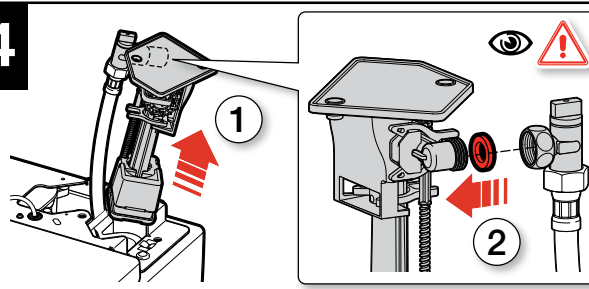
2



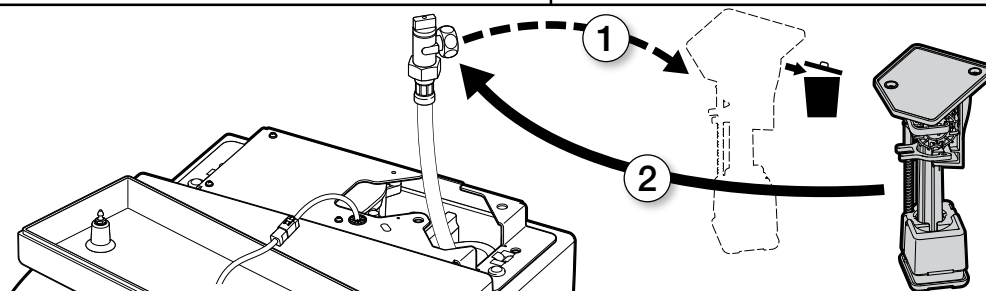
3



4



5

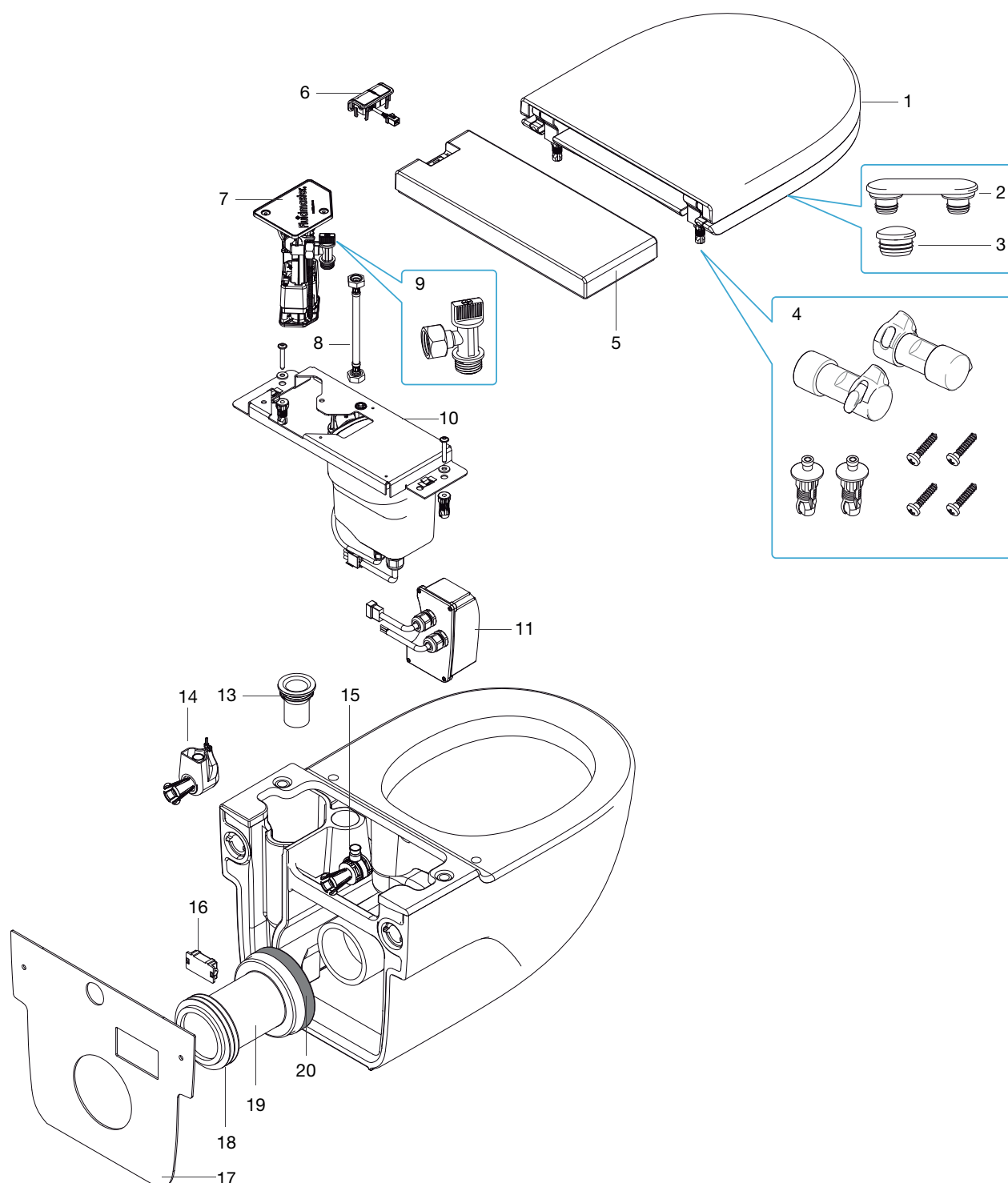


Plumbers, please ensure a copy of the installation instructions is left with the end user for future reference

ROCA

MERIDIAN IN TANK WALL HUNG PAN I SUPPORT (SOLID WALL)

SPARE PARTS







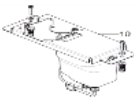
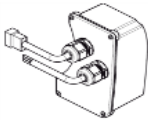

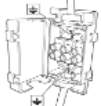





Plumbers, please ensure a copy of the installation instructions is left with the end user for future reference

ROCA

MERIDIAN IN TANK WALL HUNG PAN I SUPPORT (SOLID WALL)

SPARE PARTS

Picture	Reece Code	Product Description
	9506158	MERIDIAN IN TANK TOILET SEAT (PART 1, 2 , 3 AND 4)
 Pack of 4	9506159	MERIDIAN IN TANK SEAT BUFFER - BOTTOM FLAP (PART 2)
 Pack of 2	9506160	MERIDIAN IN TANK SEAT BUFFER - TOP FLAP (PART 3)
	9506161	MERIDIAN IN TANK TOILET SEAT FIXING SET (PART 4)
	9506162	MERIDIAN IN TANK CISTERN LID INCLUDING PUSH BUTTON (PART 5 AND 6)
	9506163	MERIDIAN IN TANK INLET VALVE (PART 7)
	9506164	MERIDIAN IN TANK ASSEMBLY BLOWER (PART 10)
	9506165	MERIDIAN IN TANK CONTROL BOX (PART 11)
	9506166	MERIDIAN IN TANK FIXING FOR WALL HUNG PAN (PART: 14 &15)
	9506168	MERIDIAN IN TANK ELECTRICAL JUNCTION BOX (PART 16)
	9506169	MERIDIAN IN TANK ADHESIVE FORM GASKET (PART 17)
	9506170	MERIDIAN IN TANK WALL FIXING BOLT SET
	9506172	MERIDIAN IN TANK WALL HUNG PAN TEMPLATE

Plumbers, please ensure a copy of the installation instructions is left with the end user for future reference