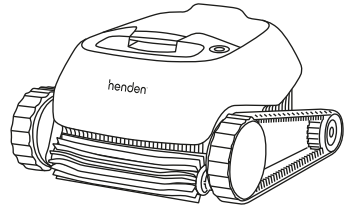


# henden™

## H2 Robotic Pool Cleaner

# QUICK START GUIDE



### Thank you for purchasing the Henden H2 Robotic Pool Cleaner.

The Henden H2 uses clever cleaning and navigation technology to keep your pool sparkling all year long. Designed for easy use and maintenance, the Henden H2 is a quality piece of pool equipment guaranteed to last.

### HELPFUL HINTS

- When working, the power supply should be placed in the shade.
- Release minimal required floating cable length to ensure proper pool coverage.
- Leave excess cable rolled outside the pool.
- After each cleaning cycle wash the filter bag or cartridge. Clogged filter bags reduce scanning and cleaning efficiency.
- Once a week unplug the cable from the power supply, unwind the tangled portions of the cable, straighten it out and leave it in the sun for several hours.
- When not in use, store the pool cleaner in a shady place upside down.

### SPECIFICATIONS

- Use the Robotic Pool Cleaner in the following water conditions only: Chlorine Max 4 ppm; pH 7.0-7.8; Temperature 6-34°C (43-93°F); NaCl Maximum = 5000 ppm.
- Motor protection: IP 68  
Minimum depth: 0.80m/2.6ft  
Maximum depth: 5m/16.4ft

**IMPORTANT**  
Please read carefully



#### CAUTIONS AND WARNINGS:

Use the originally supplied power supply only.

Do not use an extension cable in any case whatsoever.

Ensure the electrical outlet is protected by a ground fault interrupter (GFI) or an earth leakage interrupter.

Keep the power supply out of standing water.

Do not enter the pool while the Robotic Pool Cleaner is working.

Unplug the power supply before servicing.

Do not pull the Robotic Pool Cleaner from the pool using the cable.

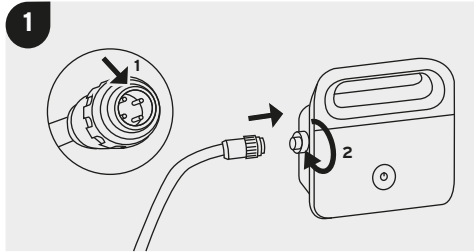
Register your product online:  
[www.hendenpools.com.au/productregistration](http://www.hendenpools.com.au/productregistration)



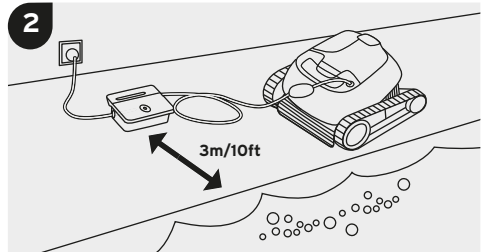
## H2 OPERATION

### Setup

Before using the Robotic Pool Cleaner for the first time, perform the following steps:



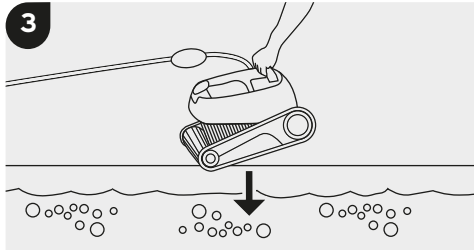
Attach the floating cable to the power supply.



Position the power supply at least 3m/10ft away from the edge of the pool.

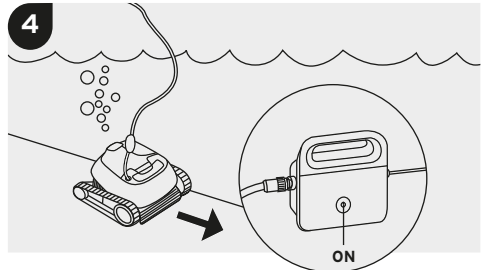
### Into the Pool

Place the Robotic Pool Cleaner into the pool. Release it and let it sink to the floor. Make sure that the floating cable is free of any obstructions.



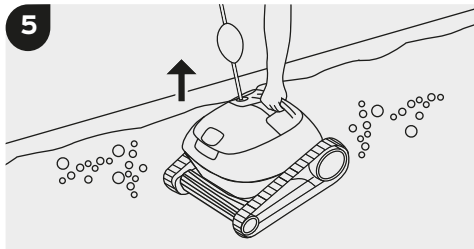
### Operation

Turn the power supply ON. The Robotic Pool Cleaner will now operate until it has reached the end of the cleaning cycle.



### Out of the Pool

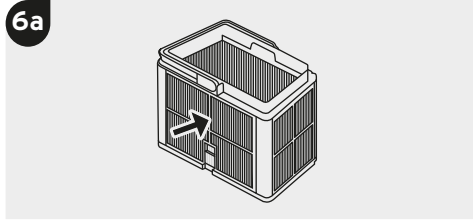
Using the floating cable, bring the Robotic Pool Cleaner to the pool's edge. Then grab the handle and remove from the pool.



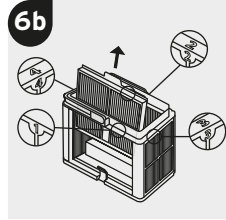
## H2 OPERATION

### Installing ultra-fine filters (optional)

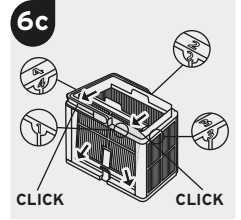
The H2 comes with a set of ultra-fine liners to enhance your cleaning experience. Install these according to the following steps:



Position your thumbs on the frame and apply pressure until they pop out.




Remove them and place them aside.

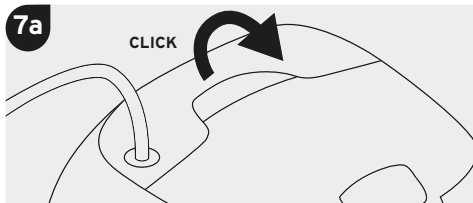


Insert your ultra-fine liners into the inside of the basket and click into place.

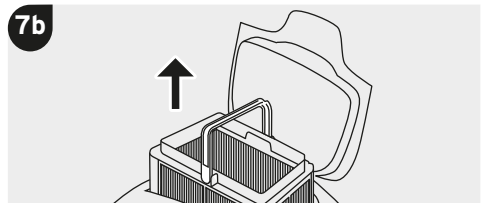
### Cleaning the Filter

It is highly recommended to clean the filter basket after each cleaning cycle. Note: Don't let the filter cartridges dry out before cleaning.

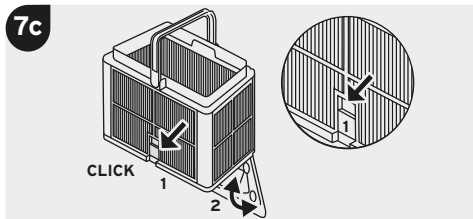
 Unplug the power supply before servicing.



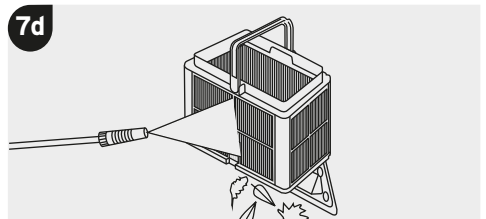
Open the filter cover.



The basket handle will automatically pop up, making it easy for you to lift the basket.



Open the latch to release the bottom lid.



Rinse well with hose. Once debris is removed close and place back into your cleaner.

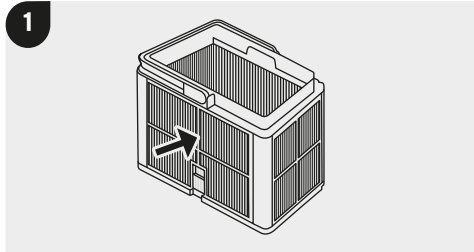
### Storage

**8** Coil the cable and store in a cool dry space upside down, or store in a caddy. DO NOT store the robot where it will be exposed to direct sunlight, excessive heat or to frost.

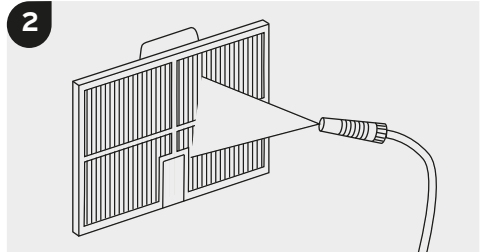
## MAINTENANCE

### Periodic Filter Cleaning

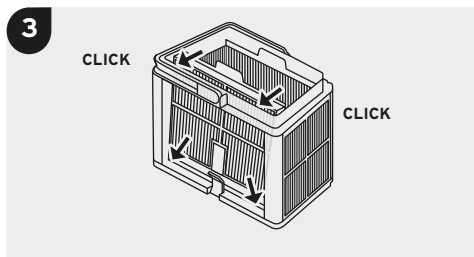
Dismantle the 4 filter panels on the basket, according to these steps:



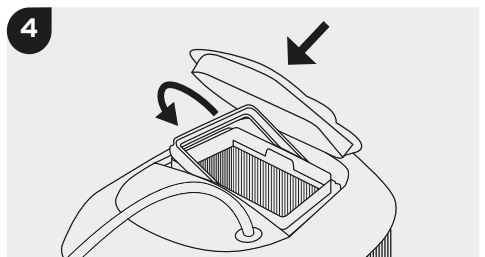
Position your thumbs on panel and apply pressure until it pops out. Repeat for all 4 panels.



Clean the filters with a hose.




Reassemble the filter panels.



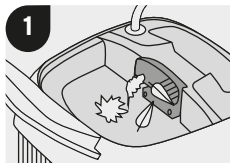
Insert the clean filter basket and close the filter cover.

### Cleaning the Impeller

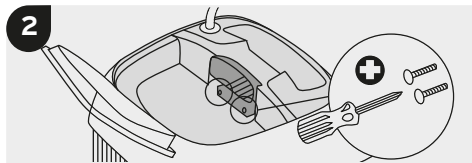
If you notice debris trapped in the impeller:

 **Unplug the power supply before servicing.**

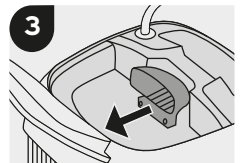
Clean the debris trapped in the impeller opening, according to the following steps:



If the debris is not reachable follow the next steps.



Using a short screwdriver open the 2 screws.



Pull the impeller cover backwards to release. Clean the debris trapped around the impeller. Assemble the impeller cover.

