



# Domaine Twin Floor Mount



## PRIOR TO INSTALLATION CHECKLIST



This product must be installed by a qualified tradesperson and we would expect the installation to be undertaken in a tradesperson like manner and finished to a tradesperson standard. This product carries a full warranty against faulty workmanship and materials.

Please inspect thoroughly before installation to ensure that the product has not been damaged and is correct. No claims for damage or incorrect items will be recognised after installation.



IT IS THE RESPONSIBILITY OF THE INSTALLER TO MAKE ANY ADJUSTMENTS TO DOORS/DRAWERS AFTER INSTALLATION IF REQUIRED.

1

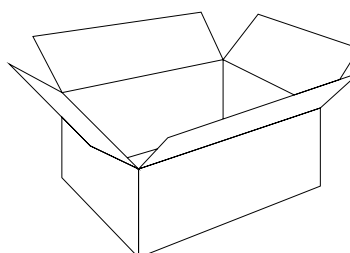
### Check Products For Any Damages

Within 48 hours of receiving your goods, unpack your ADP product and check for any possible freight damages or incorrect items.

Please contact your place of purchase to report damages or missing parts.

**No claims for damages will be recognised after installation.**

Please note: fixing screws/bolts are not supplied for installation.



2

### Positioning & Ventilation

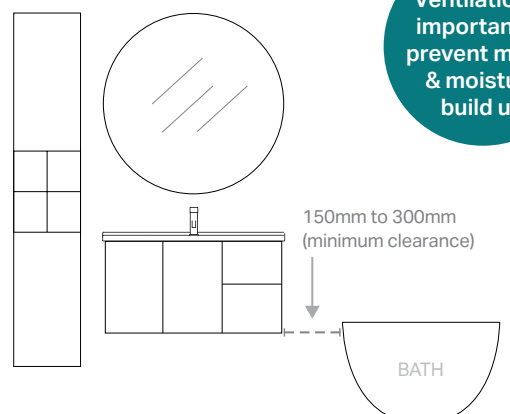
Planning your bathroom furniture placement is critical.

Furniture must be at least 300mm away from any wet areas. Materials used in the construction of our furniture units are moisture resistant, not water proof.

Do not expose furniture to shower spray.

It is important that your bathroom is adequately ventilated to eliminate moisture build up.

High humidity will lead to permanent dampness and mould resulting in a deterioration of the materials in your bathroom.



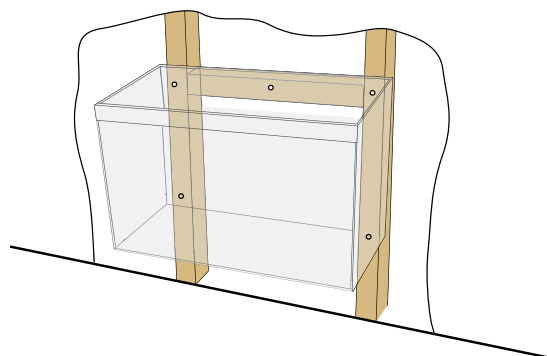
3

### Check for Support Beams

Wall hung furniture & basins require fixing to a support beam fitted between the studs to give a solid wall backing to attach the vanity to.

If necessary, fix additional support noggins at desired height for cabinet and basin fixing prior to sheeting the wall.

Ensure total width of support noggin exceeds vanity width.





## Domaine Twin Floor Mount

### 4 Check for Plumb Walls & Level Floors

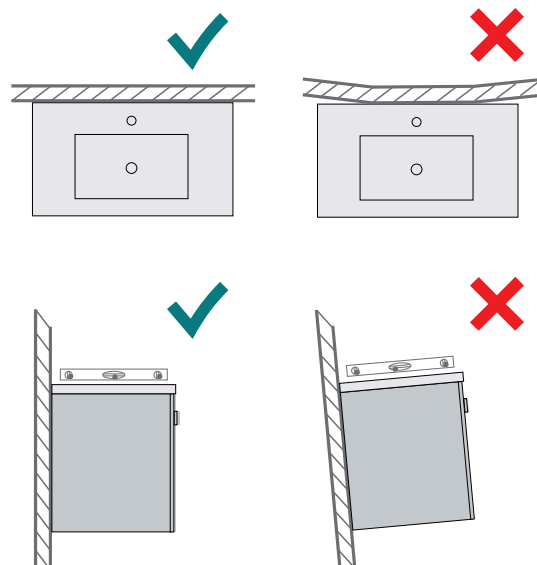
Ensure the wall is plumb and straight, ensure floor is level. If you fix the product to a non-plumb wall or floor the following could happen:

- Your door or drawers will not operate correctly.
- Door or drawers will not align.
- Basins will not sit level, which may cause water to pool or not drain properly.

If it is not possible to make the wall or floor plumb and straight you must pack the vanity out so that it does not follow the out of aligned wall.

Floor standing vanities must sit on a level floor or be packed so they sit level and true.

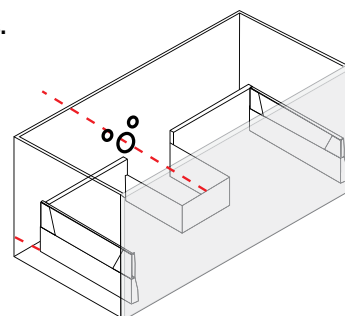
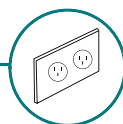
Please note if your vanity is fixed to a bowed wall, the fastening of the fixings will force your cabinet to twist and benchtop materials may crack due to increased stress on joins and materials.



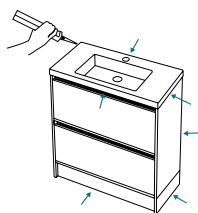
### 5 Check Plumbing Positions Align with Product Interior Configurations.

Take note of clearances behind drawers when considering water supply fittings inside cabinet.

**Please note** if your product has any electrical fittings please allow for this and talk to your electrician

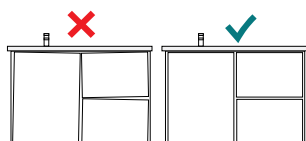


## ! IMPORTANT TIPS



**ALL AREAS WHERE CABINET/TOP MEETS WALL AND/OR FLOOR MUST BE SEALED USING A NEUTRAL CURE SILICONE.**

All edges where vanity top meets cabinet, wall or surrounding furniture must be sealed with a continuous bead of silicone.



**IT IS THE RESPONSIBILITY OF THE INSTALLER TO MAKE ANY ADJUSTMENTS TO DOORS/DRAWERS AFTER INSTALLATION IF REQUIRED.**

There may have been some movement in transportation and installation which causes doors/drawers to become unaligned.

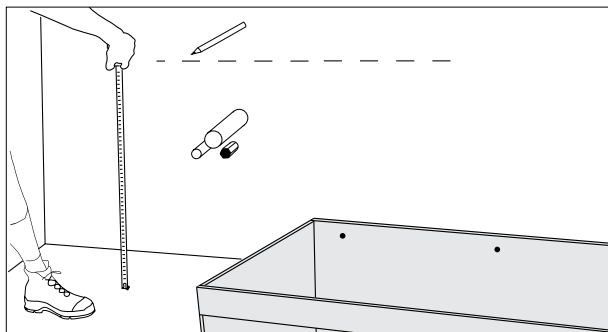
# posh

## Domaine Twin Floor Mount



### VANITY INSTALLATION

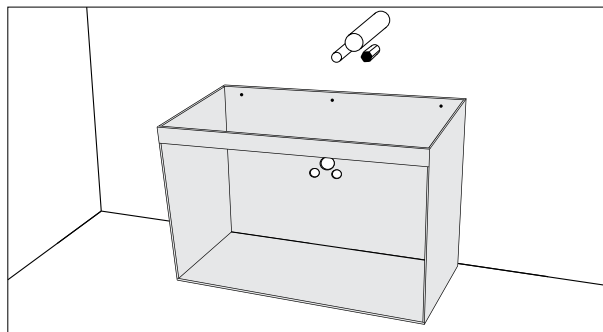
#### 1. LOCATION



After completing the Prior to Installation Checklist, mark the position of the top of the vanity. Don't forget to factor in the top/basin thickness to get the correct height.

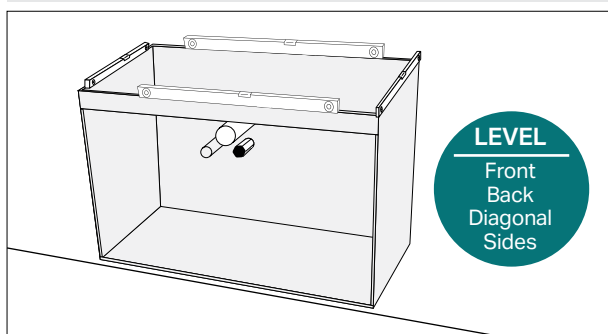
Note: Vanity must attach to a minimum of two support beams, mark these positions.

#### 2. PREPARING THE CABINET



Remove doors and drawers. Measure correct plumbing locations and drill holes for plumbing in the back panel and/or base of the cabinet with an appropriate sized hole saw. Pre-drill screw locations for fastening to wall.

#### 3. LEVELING



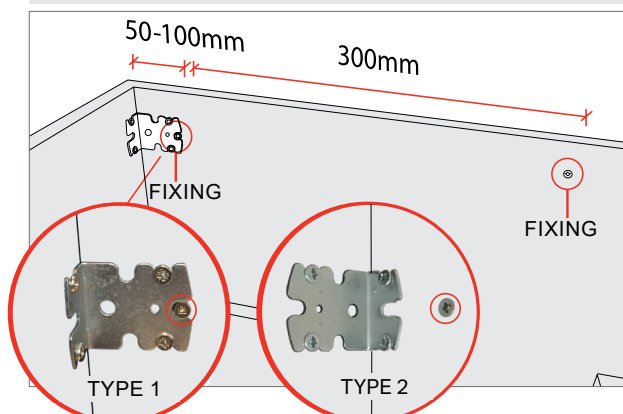
Position the vanity over the pipes in the correct position and fix with a single screw in centre of vanity to hold in place.

Check the vanity is completely level.

Wall Hung vanities: You may want use a level support/noggin to assist while leveling.

Floor Mount Vanities: You may need to pack the vanity to ensure it is sitting level & square on the floor.

#### 4. SECURING THE CABINET



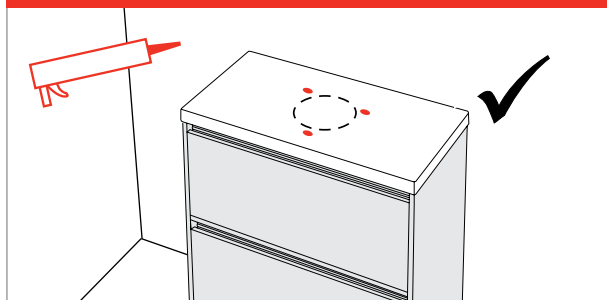
Securely fasten cabinet to wall through the back, no further than 100mm from each side of the cabinet. Upper fixings should be no lower than 50mm from the top of the back. Where possible, fasten cabinet through steel bracket in the top corner of the unit. Note: For cabinets over 900 wide you must provide additional fixing points evenly spaced at 300mm.

#### 5.A FIX VESSEL BASINS

##### NOTE

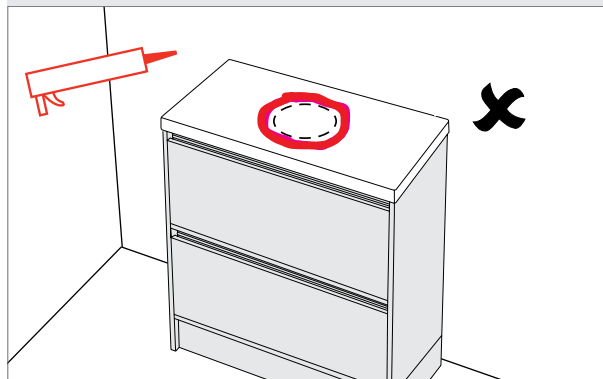
Future basin removal.

Basin replacement is an important factor to consider when fixing and sealing basins. By limiting silicon application as per instructions allows basin removal without damage to benchtops.



20mm silicon dots to hold the basin in place, limit to 3 fixing points to enable future basin removal.

#### 5.B FIX VESSEL BASINS



**DO NOT** apply a bed of silicon to fix basin to benchtop.

Plumbers, please ensure a copy of the installation instructions is left with the end user for future reference

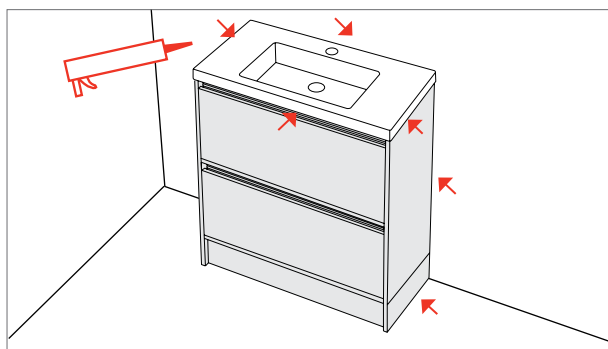
# posh

## Domaine Twin Floor Mount



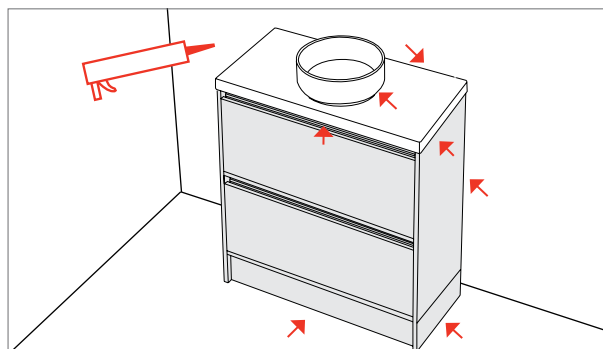
### VANITY INSTALLATION

#### 5.C SEALING CONSOLE



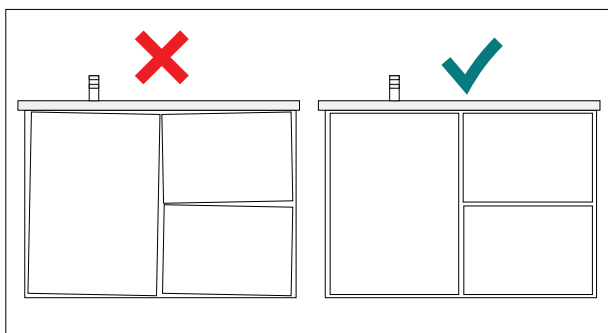
Apply silicone on the seam between the edge of the vanity top and the wall, smooth the bead, and allow to cure before use. Materials used for the construction of this unit are water resistant and not waterproof. A bead of sealant (specifically formulated for bathrooms) must be used to seal edges where water penetration can occur i.e. Between the basin and the cabinet and between the wall and the floor.

#### 5.D SEALING BASIN & BENCHTOP



When sealing a vessel or semi inset basin it is important to put a bead of silicone around the edge where the basin meets the top. As well as where the top meets the wall.

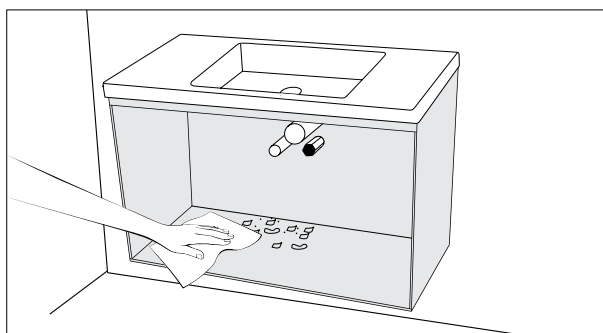
#### 6. ADJUST DOORS & DRAWERS



Install drawers and doors back onto cabinet and make adjustments to align the doors and drawers correctly.

**NOTE: IT IS THE RESPONSIBILITY OF THE INSTALLER TO MAKE ANY ADJUSTMENTS TO DOORS AFTER INSTALLATION.**

#### 7. CLEANING



Clean all building residue from the cabinet. Dry any spillage or leakage of water on or inside the cabinet during installation.

**Note:** Ensure drawer runners are free of any debris as this may effect the operation.

# posh

## Domaine Twin Floor Mount



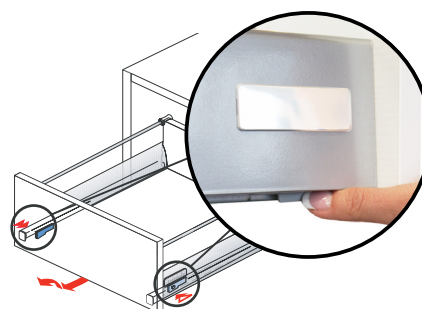
### PREMIUM SOLID SIDED DRAWERS

See video instructions at [www.stmichel.co.nz](http://www.stmichel.co.nz)

#### REMOVING DRAWER (A-TYPE)

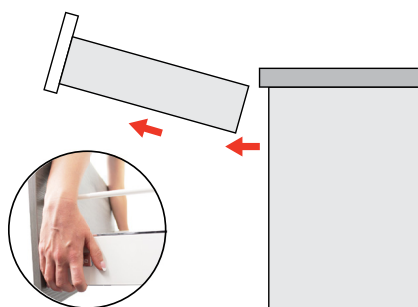


1. A Type Drawer



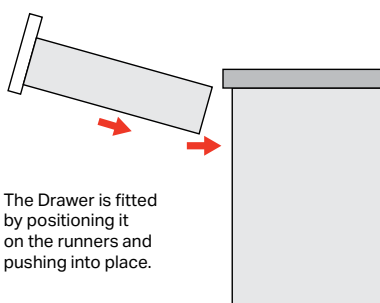
2. Press grey levers inward while pulling drawer out

**NOTE:** A-type drawer could have a rectangular waste divider.



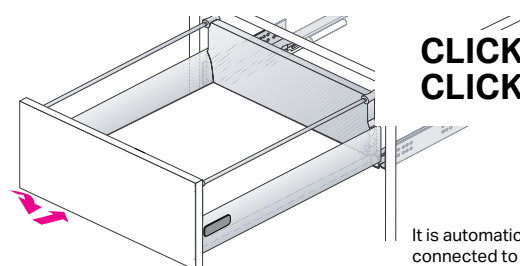
3. Lift drawer up & out

#### INSERTING DRAWER (A-TYPE)



The Drawer is fitted by positioning it on the runners and pushing into place.

1. Insert drawer on an angle



It is automatically connected to the runner by two catches. Listen for a double click

2. Fitting Drawer

# posh

## Domaine Twin Floor Mount

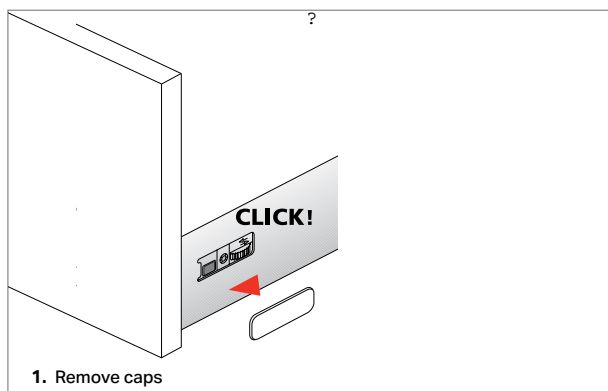


### PREMIUM SOLID SIDED DRAWERS

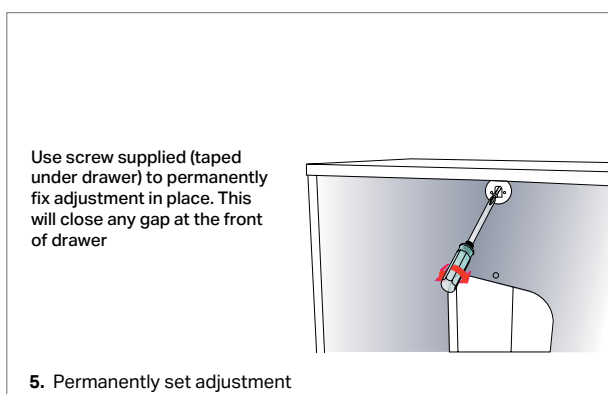
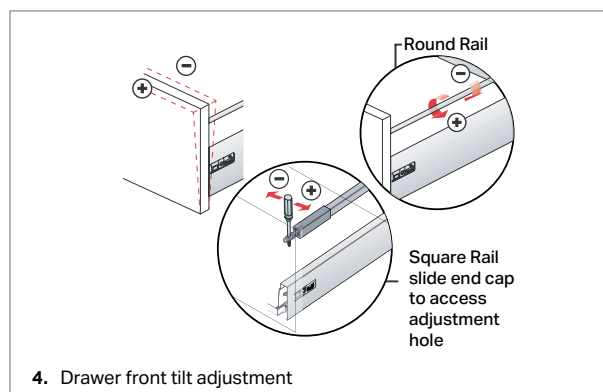
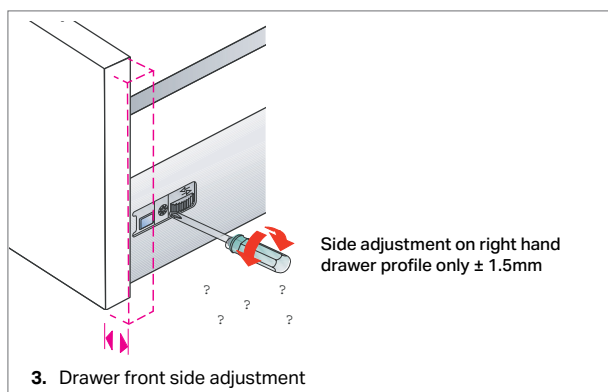
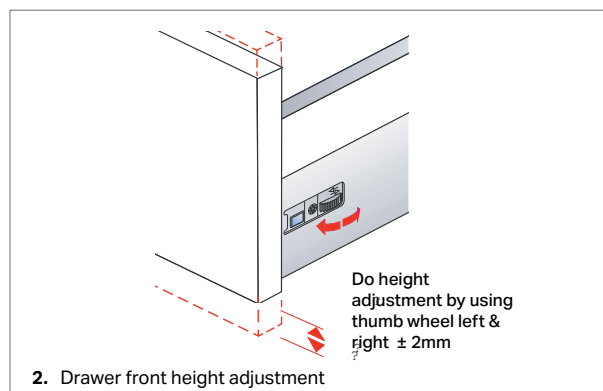
#### ADJUSTMENT (A-TYPE)

Adjust drawer front as required

**WARNING:** Avoid pushing the blue button - this will cause the drawer front panel to detach



Remove caps for adjustment & replace when you have finished.





## Domaine Twin Floor Mount



### CARE & MAINTENANCE

St Michel products are produced from materials that are well suited to the bathroom. It is, however important that your bathroom is adequately ventilated to eliminate moisture build up. High humidity will lead to permanent dampness and mould resulting in a deterioration of the materials in your bathroom. If you cannot identify basin or cabinet material used on your product, please contact your merchant or see the product information at [www.stmichel.co.nz](http://www.stmichel.co.nz).

For more detailed material information & specifications see [www.stmichel.co.nz](http://www.stmichel.co.nz)

#### VANITY TOPS / WASH BASINS

##### **Mineral Cast, Ceramic, Cherry Pie®, Matte Cherry Pie® & HPL**

Do not subject the wash basin or vanity top to water at a temperature above 55°C. Never use aggressive cleaning agents which contain strong solvents such as acid, chlorine, ammonia, drain cleaner, caustic soda, isopropyl alcohol or abrasive agents. Carefully read the cleaner product label to ensure the cleaner is safe for use on the material. Lime scale marks may be reduced by regular cleaning of the washbasin. Keep high heat away from the vanity top or wash basin and avoid metal or other sharp objects which could scratch and damage the surface.

**\*Handy Tip** – Stubborn lime scale marks can normally be removed using Bar Keeper's Friend. These cleaning products are for occasional use only.

To clean your vanity top simply wipe with a damp cloth after each use. For regular cleaning, we recommend using a soft cloth, wrung in hot water with a mild all-purpose cleaning agent. Then wipe clean with a damp cloth wrung in clean water to remove the cleaning agent and to avoid stains and stripes. For more help in removing stubborn stains and scratches refer to our product videos at [www.stmichel.co.nz](http://www.stmichel.co.nz)

**Ceramic Tops** - Due to Ceramic being hand-crafted and individually customised, and because china is fired at high temperatures, some visual distortion may be evident – but we feel that this adds to the natural beauty of the product. Due to the glazed surface of ceramic tops, scratches cannot be removed or repaired.

##### **Cherry Pie® Bench-top Surfaces, Cherry Pie Matte Basins & Matte Top Solid Basins**

For routine care & cleaning, Cherry pie® does not require any specialist cleaning regimes, most dirt and light residue will easily wipe off with a damp cloth and soapy water. The bench top should be rinsed with clean water and wiped dry. Acrylic surfaces such as Cherry Pie® are designed to develop an aged patina created by minor scratching. Regular cleaning or an abrasive cleaner will remove any light scuff marks and assist in developing an aged patina.

**Heat** - Cherry Pie® unlike marble will withstand high temperatures however sudden heat or prolonged direct heat will cause damage. To prevent damage do not place heat generating devices directly onto bench top or set close to bench top for extended periods.

**Staining** - Cherry Pie®, unlike marble and granite, is non porous and will resist most household chemicals such as cosmetics, however, some chemicals and strong dyes can cause damage and discolouration. If spillage occurs, wipe up immediately and rinse area thoroughly.

**Minor Scratching** Cherry Pie® - Take care with sharp household utensils and ceramic accessories (particularly unglazed bases, avoid sliding) These can sometimes cause scratches that will be more evident on darker Cherry Pie® bench tops. More serious scratches can be removed by a professional using an orbital sander and then re-polishing to restore.

**Matte basins** - minor scratches and difficult stubborn stains including hair dye can be buffed out with a Scotchbrite® pad in a circular motion. Wipe off residue with a damp cloth.

#### CABINETRY, HANDLES AND ACCESSORIES

St Michel cabinets are manufactured from high quality, locally sourced materials.

These materials are water resistant and not water proof. To ensure the long life of the cabinet, water must not be allowed to remain on the cabinet surfaces. All water spillages, leaks or flooding in or around the cabinet must be sponged off and dried immediately. Keep heat away from the cabinetry and avoid metal or other sharp objects which could scratch and damage the surface. Do not use abrasive cleaning agents which contain ammonia, bleach or other strong solvents. We also advise against the use of furniture polish, acetone, ethanol, benzene and coarse cleaning sponges. Carefully read the cleaner product label to ensure the cleaner is safe for use on the material.

For regular cleaning, we recommend cleaning with a soft cloth, wrung in hot water with a mild all-purpose cleaning agent. Cabinetry with structured surfaces is best cleaned along the structure to remove any dirt. Wipe clean with a damp cloth wrung in clean water to remove the cleaning agent and to avoid stains and stripes. For more help in removing stubborn stains refer to our product videos at [www.stmichel.co.nz](http://www.stmichel.co.nz)