

# Mizu Stream Heated Towel Rail - Plug-in or Hardwired

## WARNING

This product must be installed by a qualified electrician in accordance with AS/NZS 3000 wiring rules. Switch off the electrical supply at the mains before installation and maintenance. A means of disconnection must be incorporated in the fixed wiring in accordance with the wiring rules. For complete temperature control a wall mounted dimmer switch (with “off” position) is recommended. Suitable for bathroom and non-bathroom/dry areas. Not suitable for above baths, nor for installation in saunas, steam rooms or shower cubicles. Please consult with a qualified electrician to confirm appropriate compliant installation location.

Rated IP45 and suitable for indoor use only. Do not fix to damp or conductive surfaces. Site well away from curtains and fabrics. Switch off after use.

This appliance is not to be used by persons (including children) with reduced physical, sensory or mental capabilities, or lack of experience and knowledge, unless they have been given supervision or instruction concerning use of the appliance by a person responsible for their safety.

Children should be supervised to ensure that they do not play with the appliance.

**WARNING:** In order to avoid a hazard for very young children, this appliance should be installed so that the lowest heated rail is at least 600mm above the floor.

If the supply cord is damaged, it must be replaced by the manufacturer, its service agent or similarly qualified person in order to avoid a hazard.

For safety, please DO NOT use for any purpose other than as a towel rail and a towel warmer. To avoid damage DO NOT sit, stand, lean or hang on product.

## ELECTRICAL INSTALLATION

Please ensure this towel warmer is installed by a registered electrician and ensure the electrical supply, plug & switch location and product location will comply with your local regulations.

**This appliance must be fitted with an air gap phase isolation switch. For complete temperature control, a wall mounted dimmer switch (with “off” position) is recommended. Please consult with a qualified electrician for selection of an appropriate device.**

## OPERATION AND MAINTENANCE

- After installation, connect the electric power and turn on the wall switch. The towel warmer will start to work
- Turn off the power wall switch when towel warmer is not in use.
- Clean the towel warmer with a soft dry towel.
- This unit has been designed to run continuously

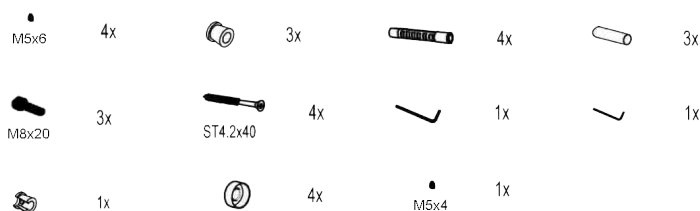
The surface temperature is high when towel warmer operates. PLEASE BE CAREFUL!

### Mizu Stream Heated Towel Rail - Plug-in or Hardwired

#### INSTALLATION INSTRUCTIONS

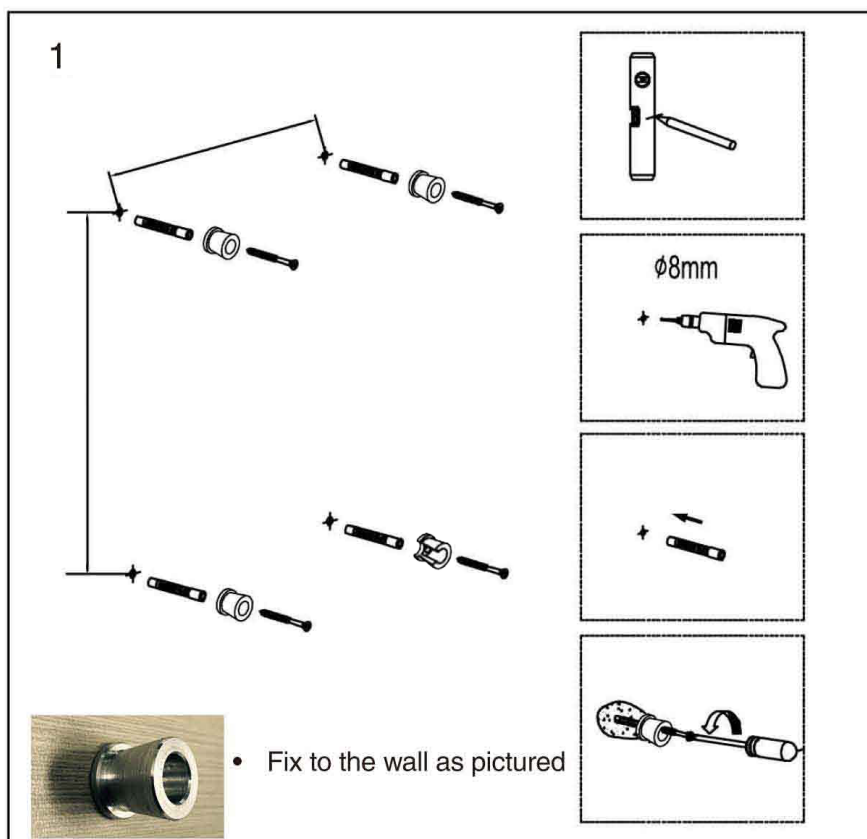
Please consult with a qualified electrician to confirm appropriate compliant installation location.

#### Parts for wall-mounted installation



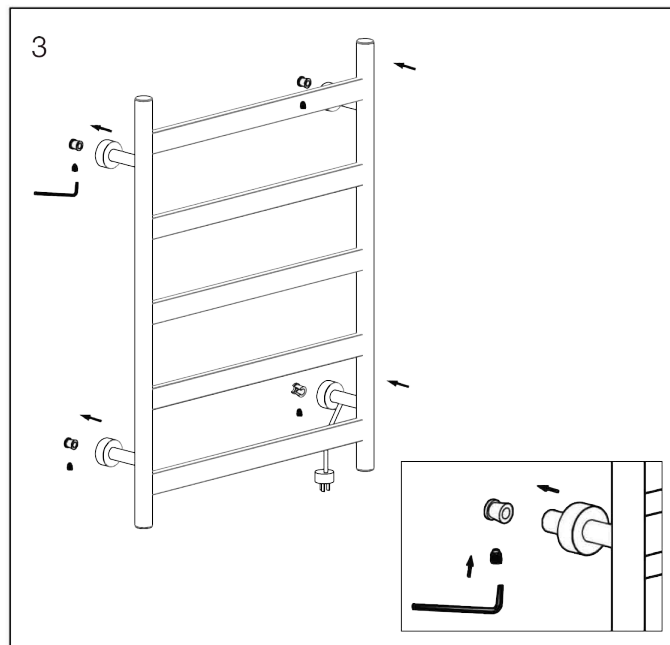
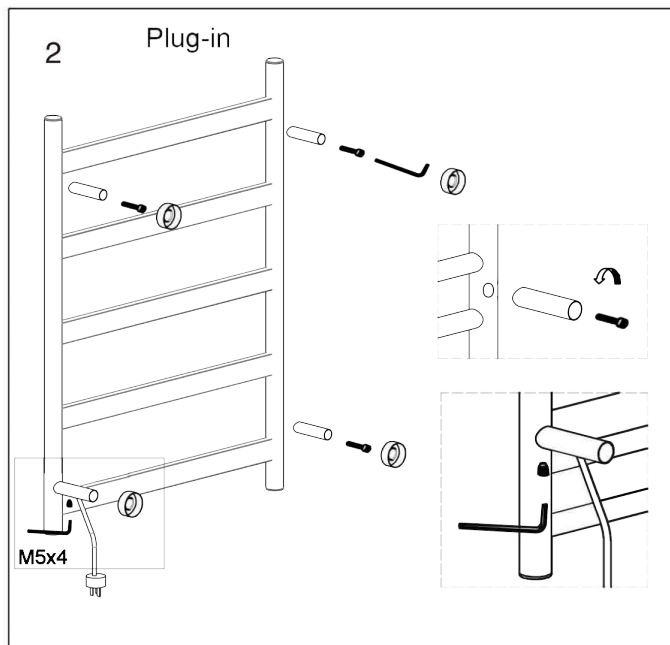
\*generic product image used

#### Plug-in Installation



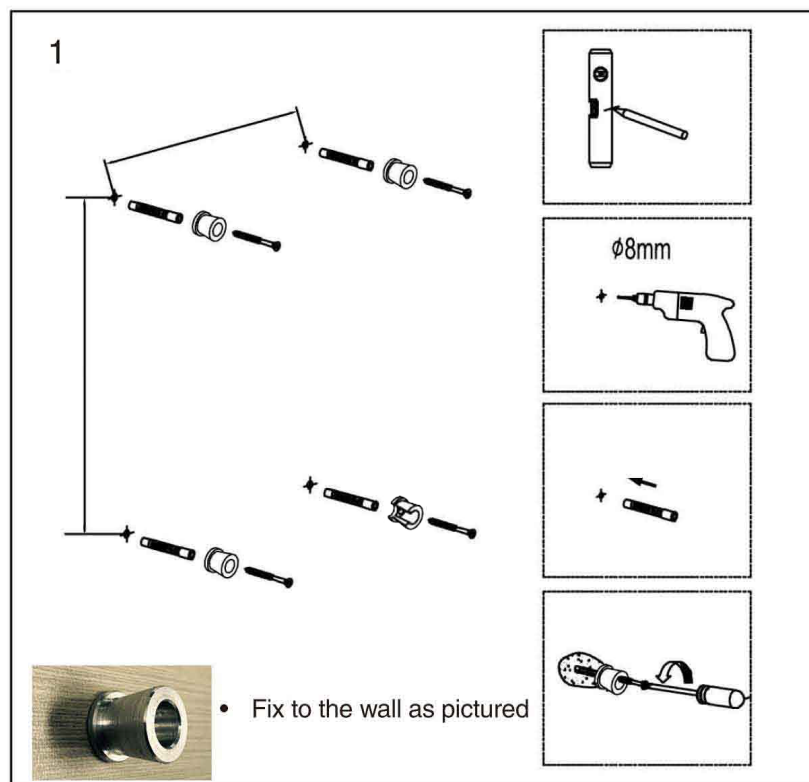
- Use the fixing point distances provided to mark out the fixing points.
- Before drilling, check that the product aligns to the marked fixing points and make adjustments if necessary.
- Note: Wall materials vary. The fixing kit supplied is suited for solid wall fixing. For timber framed walls, please ensure the product is fixed to a stud/noggin behind the wall. Where a stud/noggin is not available, please use suitable hollow wall fixing.

### Mizu Stream Heated Towel Rail - Plug-in or Hardwired



- With the allen key provided, tighten the grub screws to ensure that towel rail stays in position.

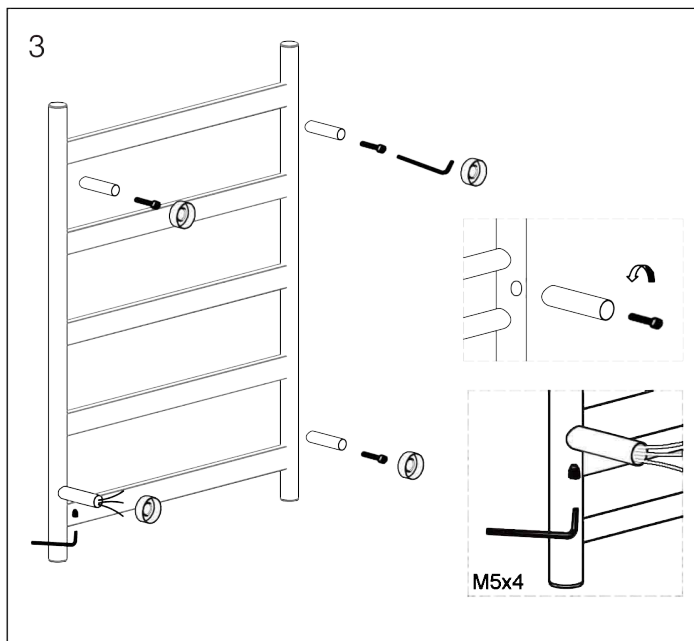
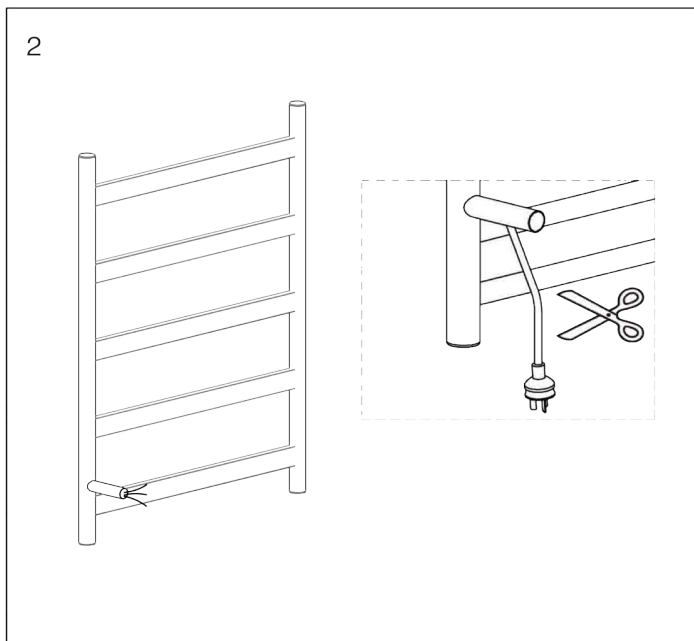
### Hardwired Installation



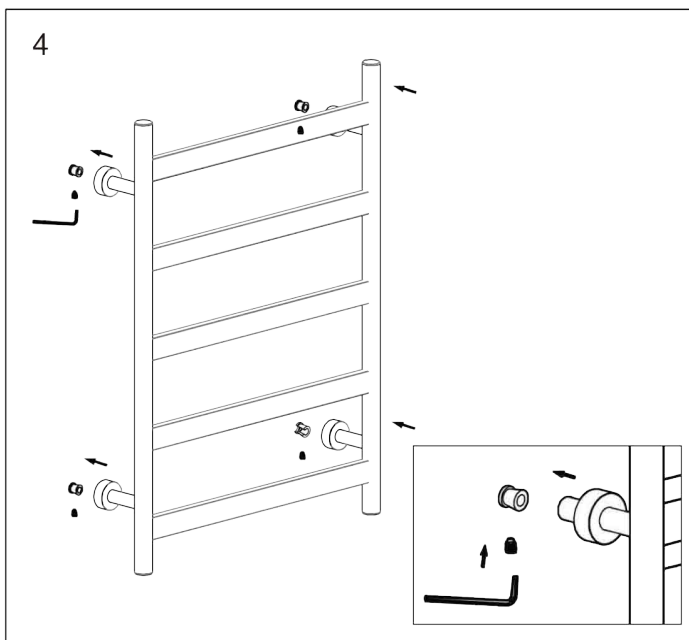
- Use the fixing point distances provided to mark out the fixing points.
- Before drilling, check that the product aligns to the marked fixing points and make adjustments if necessary.
- Note: Wall materials vary. The fixing kit supplied is suited for solid wall fixing. For timber framed walls, please ensure the product is fixed to a stud/noggin behind the wall. Where a stud/noggin is not available, please use suitable hollow wall fixing.

Electrician, please ensure a copy of the installation instructions is left with the end user for future reference

## Mizu Stream Heated Towel Rail - Plug-in or Hardwired



- Cut the power cord and connect to the power supply.



- With the allen key provided, tighten the grub screws to ensure that towel rail stays in position.