



## COMBI GIRO VALVE LEAD FREE

DOUBLE OUTLET LOOSE NUT MINI STOP. Easy installation of a double service point. Same quality and performance as AS575 but with GIRO systems.

- **VITAQ system:** more life less lime scale at higher temperatures:
  - Increase your installation life span and the flow comfort.
  - Smoother open/close operation.
  - Eliminating lime scale from building up over time.
- **GIRO system,** patented loose nut system connection, for easy installation
- Reinforced VITAQ barb cone washer.
- Metal Chrome plated handle, compact and robust.
- Double check valve, one for each outlet.
- Red and blue indexes, distinguish between hot and cold water.
- One piece stamped body, compact and resistant.
- Double O-ring on ball-stem to secure external leak tightness.



## TECHNICAL DATA SHEET COMBI GIRO VALVE

### PRODUCT SCOPE

DUAL quarter turn valve in one 15 x 15 x 20 installed upstream of a terminal fitting to shut off water supply in a quick and safe way isolating the devices to service or repair. Intended for use in residential and commercial potable water distribution networks. It includes GIRO system for an easy and quick installation as well as VITAQ system for preventing lime scale problems.

### GIRO SYSTEM

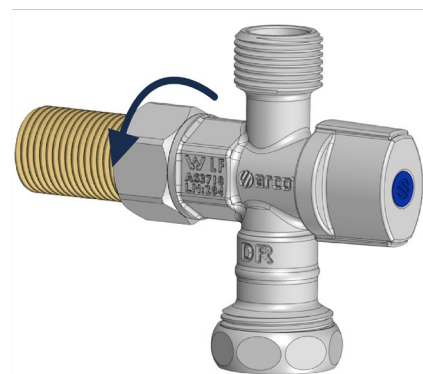
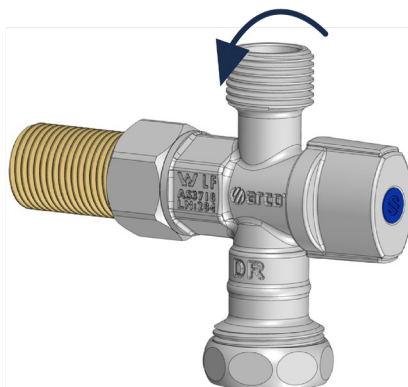
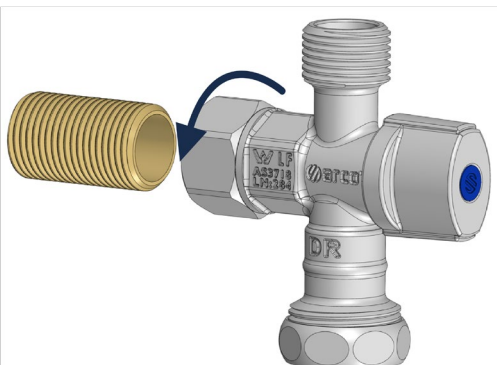
The Arco Giro range features a loose nut and compact design to enable quicker and easier installation in tight spaces. Giro also features a cone washer paired with a reinforced barb ensuring a strong seal, every time. It's resistant to hard water thanks to VITAQ technology, eliminating limescale from building up over time. Manufactured in Spain for over 50 years, Arco mini stops are made to last.



#### 1 THREAD

#### 2 ADJUST

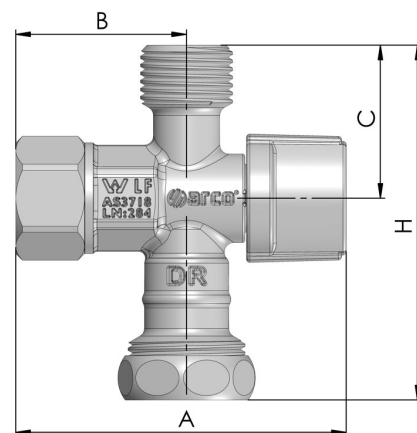
#### 3 TIGHTEN





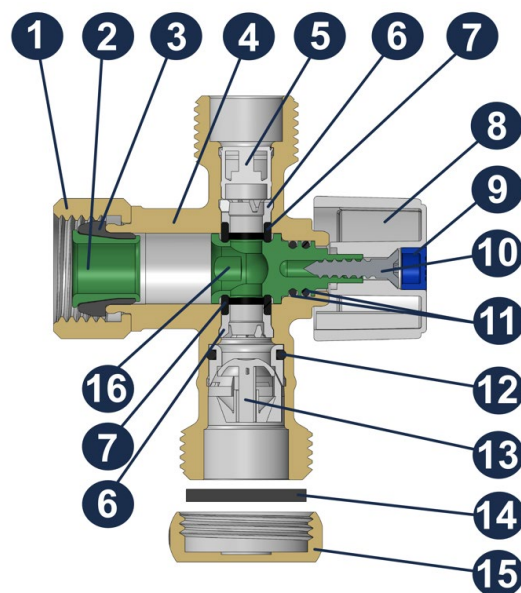
## GENERAL DIMENSIONS, PRESSURE & TEMPERATURE

Code	Size	A (mm)	B (mm)	C (mm)	H (mm)	PN (KPa)	Temp. range (°C)
AS505	1/2F x 1/2M x 3/4M	75	39	35	80	16	0 up to 80



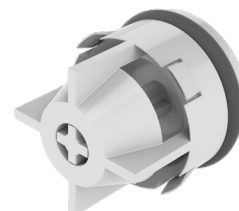
## MATERIALS

Item	Component	Material	Finishing
1	Nut	CW614N Brass	Chrome plated
2	Barb	Anti-lime polymer	VITAQ
3	Washer	EPDM	-
4	Body	CW511L Brass	Chrome plated
5	Non return valve	POM + Inox	-
6	Supporting clip	POM	-
7	Seat	NBR	-
8	Handle	ZAMAK	Chrome plated
9	Index	ABS	Blue / Red
10	Screw	Stainless steel	-
11	O-ring	EPDM	-
12	O-ring	EPDM	-
13	Non return valve	POM + Inox	-
14	Joint	NBR	-
15	Cap	CW614N Brass	Crome plated
16	Ball-Stem	Anti-lime polymer	VITAQ



## NON RETURN VALVE

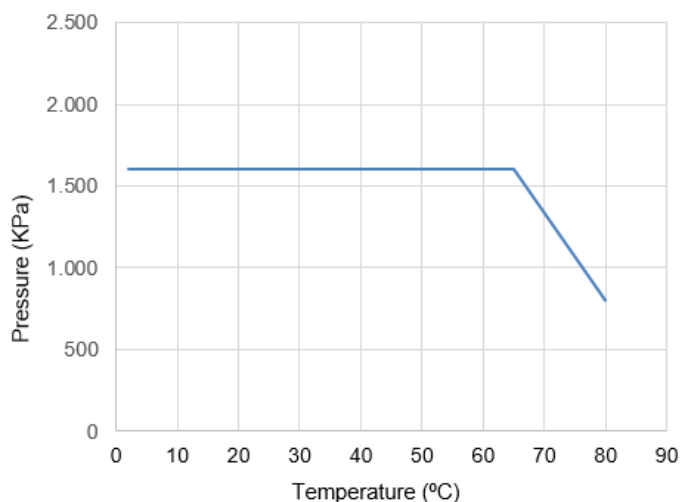
These valves incorporate a check valve system according to standard AS/NZS 2845.1:2022. The integrated check valve is installed close the outlet of the valve prevents from backflow from down stream network and devices, resulting in safer water.





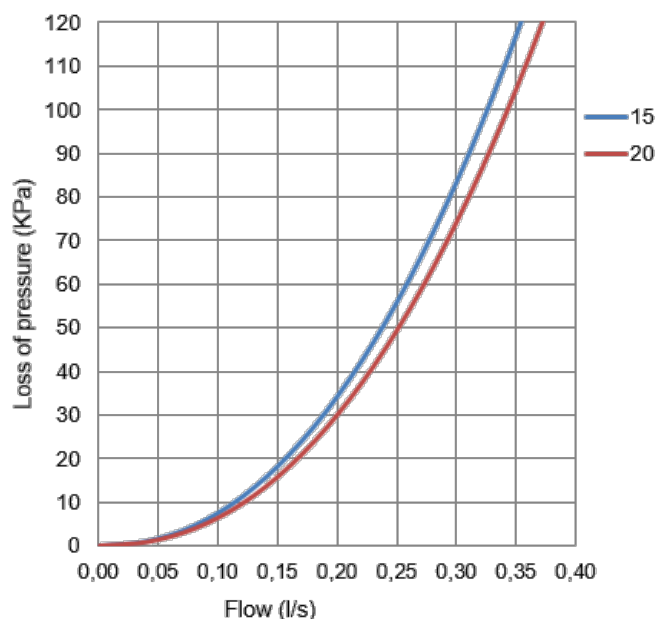
## TECHNICAL DATA

### Pressure vs temperature



### Hydraulic features.

### Flow vs Loss of pressure



### Compatibility with fluids

Fluid	Compatibility
Drinking water	Excellent

Position	15	20
Kv	1,17	1,23

Kv (m<sup>3</sup>/h), cubic meters per hour that flow through the valve generating a loss of pressure of 1 bar.

For any other fluid, please contact Arco technical Service.

## INSTALATION INSTRUCTIONS

This product is designed to be used in drinking water supply, in compliance with the Lead-Free requirements of the National Construction Code Volume 3. For installation refer to AS/NZS 3500.

Nominal Pressure 1.600 Kpa. Temperature range 0 to 80°C excluding freezing.

1. Switch off flow of water to the installation area.
2. Do not apply sealing material tape to the thread of the inflow pipe. This valve is fitted with an internal cone sealing washer.
3. Thread the valve onto the inflow pipe. Do not apply excessive torque, it can damage the washer.
4. Connect hose to fixture and to the outflow connection of the valve, ensure that connections are watertight.
5. Check operation of valve by turning handle a full quarter turn to ensure connections are watertight.



All products have an environmental impact during its life cycle, even once retired. All the components of this product can be recycled. Once the use is over, leave the valve in any recycling green point. Válvulas Arco reserves the right to change the product or any of its technical specifications without prior notice.

FT02520ING Edition 2024-07