

# Commercial Solutions

What Works and Why



*Armitage  
Shanks*

Continuing to Innovate

## A solution for every sector

The Armitage Shanks commercial range of products are designed to meet the rigorous demands of today's commercial installations. Tailored to the individual needs of each construction sector, the range blends striking aesthetics with enhanced durability and combines improved water efficiency with regulatory compliance.

Stadia

Hospitals

Offices

Leisure

Public Buildings

Schools

Hotels



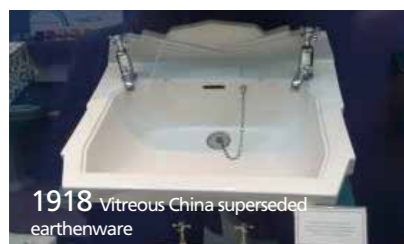
## Armitage Shanks creating bathrooms since 1817

*In the early years of the 19th century the company that would become Armitage Shanks was founded with a simple objective; to produce sanitaryware of exceptional quality.*

*Now, in the early years of the 21st century, this philosophy, supported by investment in technology and traditional manufacturing skills, still remains at the core of our business.*



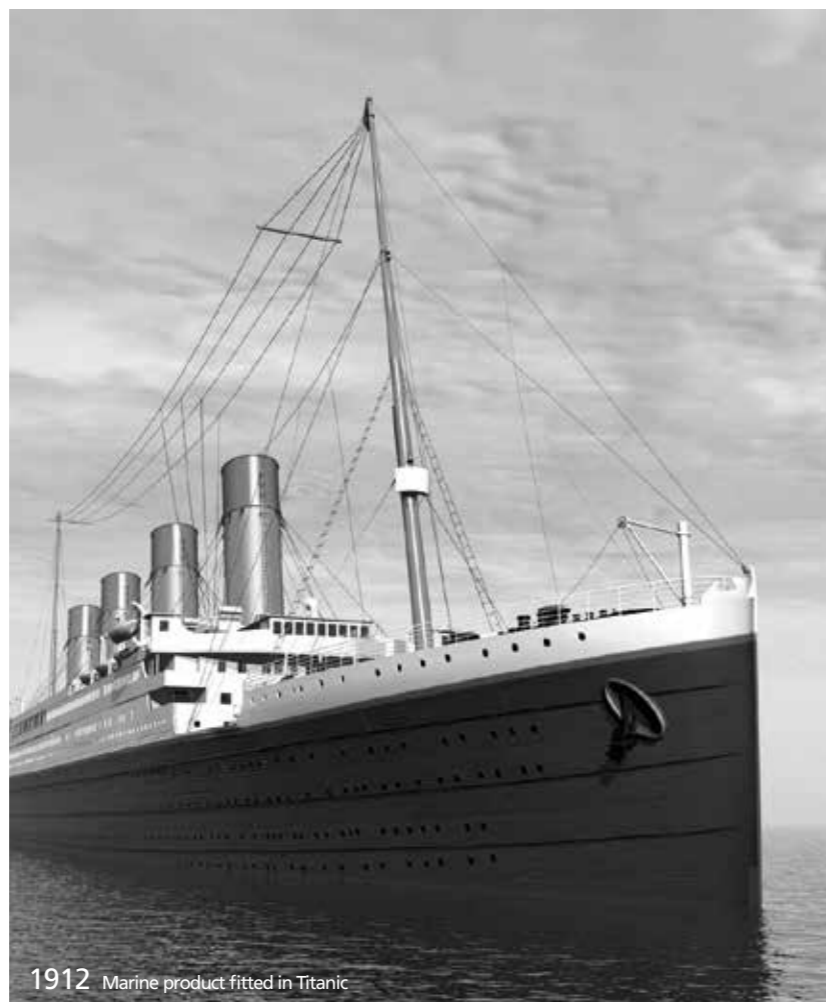
1848 Introduced hygienic basin to raise life expectation from 40 years



1918 Vitreous China superseded earthenware



1928 First sanitaryware colours introduced



1912 Marine product fitted in Titanic



1955 Export sales topped a million pounds, 50% of total business



1962 The birth of battery casting



1965 First to introduce bold colours



1969 Rimless technology invented



1969 Invented pre-plumbed IPS panel system



1986 First fully automated warehouse in the UK



1993 First to introduce fully compliant less-abled Doc M pack



1996 First pressure casting machine installed



2007 Launch of Portman21



2011 Launch of Markwik21



2014 Invention of Anti-Pseudomonas BioGuard outlet

## Every bathroom, every building, everywhere

Each type of building places a unique demand on the products and facilities within it. Portman21 meets the performance and regulatory needs of every different sector, these are just a few of them.

### HEALTHCARE

The specification of sanitaryware and fittings for healthcare use can be a critical decision. For over 50 years Armitage Shanks has specialised in developing products that meet the complex functional requirements of hospital environments and the demands of government legislation.

Healthcare specific Portman21 basins and toilets share modern ultra-hygienic designs and include innovative features and benefits which have been carefully developed in conjunction with healthcare professionals and are fully tested in healthcare environments. They are also fully compliant with Australian and New Zealand Government standards.



### SCHOOLS

Research has proven the common sense belief that clean, safe and functioning school toilets promote improved behaviour. Creating toilets pupils value, and can use when required, has a positive influence on their health, willingness to learn and attendance.

Armitage Shanks, has been involved in a number of campaigns over the years for school toilet improvement and has been a key supplier to schools since 1910. The Armitage Shanks commercial range of products have been designed to cope with heavy duty use and minimise water wastage.



### OFFICES

Forward thinking businesses, concerned with helping their staff perform at optimum levels, realise their washrooms make a significant statement about the company's, and management's, attitude towards the people who work for it. While different organisations require different approaches, the fundamental specification factors are common; fitness for purpose, water economy, return on investment, equal access for all, easy cleaning and the effective use of space.

Armitage Shanks extensive commercial product collection features hard-wearing water efficient products suitable for the smallest offices and the largest corporate headquarters.

### AS1428

The Australian Standard® AS1428. Design for Access and Mobility sets out the minimum design requirements for new building work, as required by the NCC (National Construction Code), to enable access for people with disabilities.

Armitage Shanks Portman21 products have been designed, developed and tested in consultation with less-abled groups.

These products not only meet the requirements of AS1428 but also exceed them.

The Back-to-Wall 800mm Rimless Pan not only provides comfortable transfer but a more hygienic flush.



### STADIA

Over 1.3 million people visit Cardiff's Millennium Stadium annually. The UK's first fully retractable roof encloses almost 75,000 spectators for each major rugby or football game. Providing washroom facilities for the fans is the foundation of each successful event. While every venue may not share the prestige of the Millennium Stadium, functional, attractive and cost effective washroom design is just as important for local facilities.

The Armitage Shanks commercial range is designed to cope with the demands of constant use in such heavy duty applications while minimising water wastage.



### LEISURE

The scope of buildings designed to cater for the growth in leisure activities is vast; from the small town museum, to the regional music arena, from the local golf course's clubhouse to the newest shopping centre or mega mall. Whatever size the building, the necessity to design durable, aesthetically pleasing, easy to maintain washrooms is just as important.

Water management is particularly significant in entertainment or shopping facilities and Armitage Shanks water efficient products can help reduce water wastage and utility bills.

# Designed for the future

Commercial washrooms are subject to more stringent legislation, more inconsiderate use, harsher cleaning regimes and a tougher cost/benefit analysis than their domestic counterparts. Armitage Shanks products have been designed specifically to meet these challenges.

## WATER EFFICIENCY

Most commercial buildings, according to experts, can reduce water consumption by around 50%.

The Australian environmental scheme WELS, sets the standard for best practice in water-saving and is a useful measure of a building's level of achievement.

Armitage Shanks commercial products are all (where relevant) WELS rated and achieve a rating at or towards the top of the rating scale.

By installing Armitage Shanks commercial products within a building it can have a very positive impact on water-saving and it will help to optimise the water efficiency of any project. Water-saving is a fundamental feature within the commercial collection.

- Portman21 dual flush WC's can flush on as little as 4.5/3 litres of water, a saving of up to 45%
- Sensorflow21's electronic washroom water management solution ensures water is only used when required
- Sensorflow21, Piccolo21 and Avon21 mixers are supplied with regulators to reduce their flow down to 3.78lt/pm at 300 kPa
- Piccolo21 mixers include CLICK technology with "half" and "full" flow rate stops
- Avon21 self-closing taps automatically stop water flow after a preset time, potentially saving 15%

## HYGIENE

Cleanliness and hygiene are the primary concern of public washroom users, many will even employ personal rituals aimed at avoiding physical contact with surfaces. They will use all their senses to judge hygiene; aroma, lighting, texture and colour all play a part. A washroom's physical layout and size can also be a factor as the last available toilet or urinal "that no one else wants" is often perceived as below standard, or unclean. Armitage Shanks products can help to optimise the hygiene performance of a washroom:

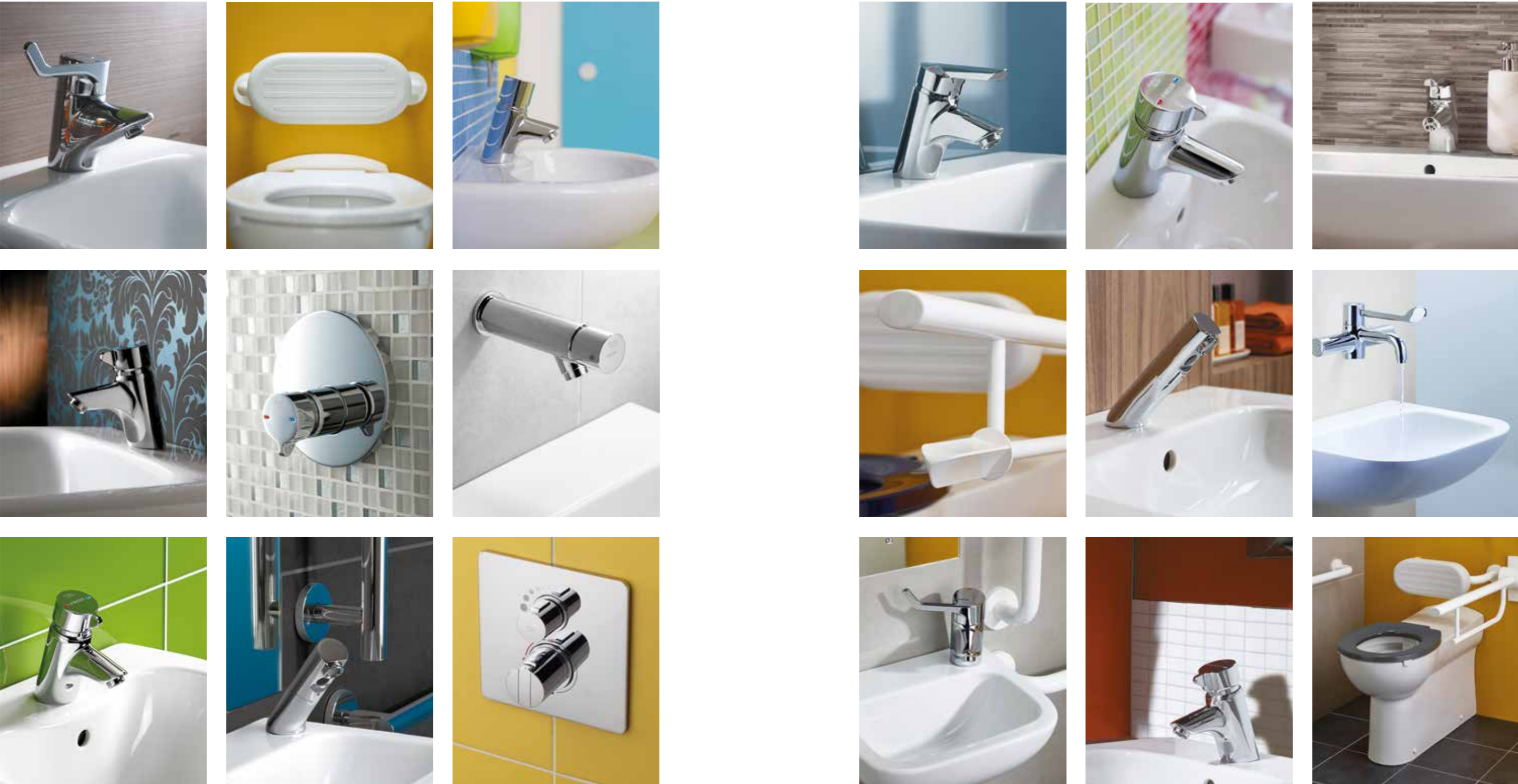
- Portman21 sanitaryware's smooth external contours eradicate dirt traps
- Portman21 sanitaryware's internal design minimises cavities that can harbour bacteria
- Portman21 WC's rimless pans eliminate a traditional bacteria haven
- Markwik21 mixers can be easily disinfected, stopping the growth of bacteria such as legionella



Grab rails not available in Australia

# Multiple choices for multiple applications

For almost every sector of the commercial washroom market there is a Portman21 product that has been designed to meet its needs. Because every piece has been developed with the performance, durability and regulatory demands of the broader commercial market in mind, many Portman21 products can be used across several different market sectors. This flexibility allows the specifier to mix and match styles to create unique bathrooms over a broad spectrum of applications.



Grab rails not available in Australia

Grab rails and accessories not available in Australia

## Form and function perfectly combined

With durability and performance as its foundation, Armitage Shanks commercial products timeless and elegant aesthetics lift them beyond the constraints of normal commercial products. The “where, what and why” of the collections’ key pieces are highlighted in the following pages.



Basins



PORTMAN21 WALL BASIN 570MM WITH SHELF

- Easy to clean design
- Shelf provides useful area
- Ideal for use in staff/public areas

Right hand taphole, no overflow, DN 32 waste hole  
**9506090**



PORTMAN21 WALL BASIN 400MM

- Versatile range of taphole and overflow configurations
- Right and left hand taphole options help reduce splashing and potentially harmful airborne bacteria
- Easy to clean design
- No overflow versions - great for clinical area use

400mm basin, with overflow, 1 centre taphole, DN 32 waste hole  
**9506079**

400mm basin, no overflow, 1 right hand taphole, DN 32 waste hole  
**9506078**

400mm basin, no overflow, 1 left hand taphole, DN 32 waste hole  
**9506154**

400mm basin, no overflow, no taphole, DN 32 waste hole  
**9506155**

PORTMAN21 WALL BASIN 500MM

- Versatile range of taphole and overflow configurations
- Right and left hand taphole options help reduce splashing and potentially harmful airborne bacteria
- Easy to clean design
- No overflow versions - great for clinical area use



500mm basin, with overflow, 1 centre taphole, DN 32 waste hole  
**9506083**

500mm basin, no overflow, 1 right hand taphole, DN 32 waste hole  
**9506080**

500mm basin, no overflow, 1 left hand taphole, DN 32 waste hole  
**9506156**

500mm basin, no overflow, no taphole, DN 32 waste hole  
**9506081**

500mm basin, no overflow, 2 taphole, DN 32 waste hole  
**9506082**

PORTMAN21 WALL BASIN 600MM

- Versatile range of taphole and overflow configurations
- Right and left hand taphole options help reduce splashing and potentially harmful airborne bacteria
- Easy to clean design
- No overflow versions - great for clinical area use



600mm basin, with overflow, 1 centre taphole, DN 32 waste hole  
**9506087**

600mm basin, no overflow, 1 right hand taphole, DN 32 waste hole  
**9506084**

600mm basin, no overflow, 1 left hand taphole, DN 32 waste hole  
**9506157**

600mm basin, no overflow, no taphole, DN 32 waste hole  
**9506085**

600mm basin, no overflow, 2 taphole, DN 32 waste hole  
**9506086**

PORTMAN21 ACCESSIBLE WALL BASIN 600MM

- Innovative grab handle incorporated into the under-basin design allows users to easily and efficiently pull themselves comfortably up to the basin
- Flat front design helps to provide a seal between the patient and the basin - thus avoiding embarrassing splashes
- Ergonomically designed for comfortable arm rest and tap use
- Shallow basin depth and fully glazed underside provides comfort for seated users legs



600mm basin, with overflow, 1 centre taphole, DN 32 waste hole  
**9506088**

600mm basin, no overflow, 1 centre taphole, DN 32 waste hole  
**9506089**

600mm basin, no overflow, no taphole, DN 32 waste hole  
**9506150**

WCs



**PORTMAN21 BACK-TO-WALL 800MM RIMLESS PAN ONLY**  
**9505784**

- Truly innovative patented rimless flushing provides ultra hygienic and efficient delivery of water
- Modern, easy to clean design
- WELS 4 star, 4.5/3 litre flush
- Average flush: 3.3 litres
- Great for disabled use



**PORTMAN21 BACK-TO-WALL 800MM RIMLESS PAN WITH SEAT SINGLE-FLAP WHITE (PACK)**  
**9505796**

**PORTMAN21 BACK-TO-WALL 800MM RIMLESS PAN WITH SEAT SINGLE-FLAP STEEL BLUE (PACK)**  
**9505797**

**PORTMAN21 BACK-TO-WALL 800MM RIMLESS PAN WITH SEAT SINGLE-FLAP GREY (PACK)**  
**9505798**

Grab rails not available in Australia



**PORTMAN21 OVERHEIGHT BACK-TO-WALL 610MM RIMLESS PAN**  
**9506123**



**PORTMAN21 OVERHEIGHT BACK-TO-WALL 610MM RIMLESS PAN WITH SEAT DOUBLE-FLAP WHITE (PACK)**  
**9506344**

- Truly innovative patented rimless flushing provides ultra hygienic and efficient delivery of water
- Modern, easy to clean design
- WELS 4 star, 4.5/3 litre flush
- Average flush: 3.3 litres
- Great for ambulant use

**SINGLE-FLAP WHITE**  
**9506151**

**SINGLE-FLAP GREY**  
**9506152**

**SINGLE-FLAP STEEL BLUE**  
**9506153**



**PORTMAN21 TOILET SEAT**

- Single-flap available in 3 colours, ideal for providing colour contrast for sight impairment
- Strong hinge design
- Complete with retaining buffers to help prevent sideways movement
- Ideal for disabled use - no cover to hinder wheelchair transfer



**PORTMAN21 TOILET SEAT SINGLE-FLAP WHITE**  
**9505785**



**PORTMAN21 TOILET SEAT SINGLE-FLAP STEEL BLUE**  
**9505786**

**PORTMAN21 TOILET SEAT SINGLE-FLAP GREY**  
**9505787**



**PORTMAN21 XL BACK-TO-WALL PAN ONLY**  
**9505788**

**PORTMAN21 XL PAN AND SEAT SINGLE-FLAP WHITE (PACK)**  
**9505799**

- Extra large toilet pan
- WELS 4 star, 4.5/3 litre flush
- Average flush: 3.3 litres
- Easy to clean design
- Great for Bariatric use

**PORTMAN21 XL TOILET SEAT AND COVER DOUBLE-FLAP WHITE**  
**9505789**

- Soft close mechanism
- Strong hinge design

# Support and Grab Rails



**PORTMAN21 HINGED SUPPORT RAIL 800MM WHITE**  
**9506075**

- Rail is made from corrosion resistant aluminium
- Load tested to 200kg (downwards and sideways)
- Anti-finger trap hinge design
- Designed to be easy to clean
- Friction hinge system helps to prevent rail dropping down

Grab rails not available in Australia



Grab rails not available in Australia



**PORTMAN21 BACK SUPPORT RAIL AND CUSHION 510 X 310MM**  
**9506140**

- Rail is made from corrosion resistant aluminium
- Loaded tested to 200kg
- Nylon fixation ends are included so rails do not require additional earthing
- Cushion is waterproof and fully sealed



**PORTMAN21 BACK SUPPORT RAIL WHITE**  
**9506074**

- Rail is made from corrosion resistant aluminium
- Loaded tested to 200kg
- Nylon fixation ends are included so rails do not require additional earthing



**CUSHION BACK SUPPORT**  
**9506077**

- Cushion is waterproof and fully sealed



**WHITE TOILET ROLL HOLDER FOR HINGED SUPPORT RAIL**  
**9506076**

- Toilet roll holder is designed for single-handed use

## Tapware and Showers



Sensor operated surgeon set not available in Australia



### MARKWIK21 HOB MOUNTED THERMOSTATIC SURGEONS SET 2500690

- TMV3 approved point-of-use thermostatic cartridge
- Unique patent pending BioGuard outlet - helping to reduce risk of Pseudomonas bacteria
- Removable spout, cartridge and body for easy autoclaving
- Easy to access and clean filters
- Cool body using Insulate Technology



### HYDRO PURGE KIT 9506138

- Available for line cleansing when commissioning



### MARKWIK21 WALL MOUNTED THERMOSTATIC SURGEONS SET LEVER OPERATED WITH S CONNECTORS 2500686

- TMV3 approved point-of-use thermostatic cartridge
- Removable spout, cartridge and body for easy autoclaving
- Unique patent pending BioGuard outlet - helping to reduce risk of Pseudomonas bacteria
- Easy to access and clean filters
- Cool body using Insulate Technology



### HYDRO PURGE KIT 9506138

- Available for line cleansing when commissioning



### MARKWIK21 THERMOSTATIC BASIN MIXER WITH COPPER TAILS 2500685

- Basin mixer with extended easy use lever particularly suitable for closed fist operation
- Suitable for healthcare and less abled bathrooms
- Sequential operation. To ensure system hygiene and user safety the water is always drawn from first cold and then the hot supply
- Can be fitted in standard taphole



### BIOGUARD OUTLET 9506204

- Available as an optional extra for greater protection against biofilm attachment



**MARKWIK21 CONCEALED THERMOSTATIC SHOWER MIXER**  
**2500687**

- TMV3 approved point-of-use thermostatic cartridge which is fully tested to some of the most rigorous of standards
- All metal back plate and handle for increased durability
- Clear hot/cold identification that won't rub-off
- Ultra safe and easy to use sequential lever mechanism



**MARKWIK21 EXPOSED THERMOSTATIC SHOWER MIXER WITH HANDSHOWER OUTLET**  
**2500688**

- TMV3 approved point-of-use thermostatic cartridge which is fully tested to some of the most rigorous of standards
- Clear hot/cold identification that won't rub-off
- Ultra safe and easy to use sequential lever mechanism



**MARKWIK21 EXPOSED THERMOSTATIC BATH MIXER WITH OUTLET**  
**2500689**

- TMV3 approved point-of-use thermostatic cartridge which is fully tested to some of the most rigorous of standards
- Ultra safe and easy to use sequential lever mechanism
- Clear hot/cold identification that won't rub-off
- Laminar flow to help reduce airborne water mist



**MARKWIK21 ANTI-VANDAL SHOWER HEAD**  
**9506211**

- Robust solid brass construction
- Anti-vandal design
- Anti-ligature for secure use and mental-health use
- Anti-scale showerhead
- WELS 3 star, 7.5 Litres/Minute



**PICCOLO21 SINGLE LEVER BASIN MIXER**  
**9506249**

- Ceramic disc technology improves performance and reduces maintenance
- Lever operation, makes for better ergonomics
- CLICK technology reduces water usage by 50%
- Clear hot & cold indices that resist wear from use and cleaning
- SPX hoses have a smooth inner bore making them more resistant to bacteria growth
- Anti-vandal outlet
- Laminar flow reduces airbourne water
- Adjustable Temperature Limiter allows the user to manually set the maximum volume of hot water to help prevent scolding.
- WELS 6 star, 3.78 Litres/Minute



**PICCOLO21 BUILT-IN SHOWER VALVE**  
**9506250**

- Ceramic disc technology improves performance and reduces maintenance
- Lever operation, makes for better ergonomics
- CLICK technology reduces water usage by 50%
- Clear hot & cold indices that resist wear from use and cleaning
- Adjustable Temperature Limiter allows the user to manually set the maximum volume of hot water to help prevent scolding.



**PICCOLO21 LONG LEVER BASIN MIXER**  
**9506251**

- Ceramic disc technology improves performance and reduces maintenance
- Lever operation, makes for better ergonomics
- CLICK technology reduces water usage by 50%
- Clear hot & cold indices that resist wear from use and cleaning
- SPX hoses have a smooth inner bore making them more resistant to bacteria growth
- AS1428 compliant ergonomic handles give precise control even when wet
- Anti-vandal outlet
- Laminar flow reduces airbourne water
- Adjustable Temperature Limiter allows the user to manually set the maximum volume of hot water to help prevent scolding.
- WELS 6 star, 3.78 Litres/Minute



**PICCOLO21 LONG LEVER BUILT-IN SHOWER VALVE**  
**9506252**

- Ceramic disc technology improves performance and reduces maintenance
- Lever operation, makes for better ergonomics
- CLICK technology reduces water usage by 50%
- Clear hot & cold indices that resist wear from use and cleaning
- AS1428 compliant ergonomic handles give precise control even when wet
- Adjustable Temperature Limiter allows the user to manually set the maximum volume of hot water to help prevent scolding.

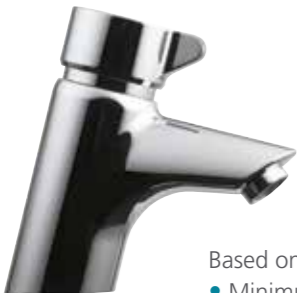


**AVON21 BIB TAP NON-MIXING**  
**9506207**

**AVON BIB TAP NON-MIXING WITH WARM WATER ETCHING ON HANDLE**  
**9506425**

- Robust solid brass construction
- Laminar flow for reduction of potentially harmful airborne water vapour
- Self-closing shut off for water economy
- 'Press' etched onto the handle for clear user direction
- Anti-vandal outlet
- Easy to adjust timing
- Warm water NSW Health compliant version available
- WELS 6 star 3.78 Litres/Minute maximum flow

Based on 350 kPa  
• Minimum run time: 0 seconds • Maximum run time: 10 seconds • Factory set run time: 5 seconds



**AVON21 BASIN MIXER**  
**9506206**

- Anti-vandal design
- Self-closing shut off for water economy
- Closed fist use
- Easy timing adjustment ring
- WELS 6 star, 3.78 Litres/Minute

Based on 350 kPa  
• Minimum run time: 0 seconds • Maximum run time: 25 seconds • Factory set run time: 5 seconds



**AVON21 PILLAR TAP**  
**9506205**

- Anti-vandal design
- Self-closing shut off for water economy
- Closed fist use
- Easy timing adjustment ring
- WELS 6 star, 3.78 Litres/Minute

Based on 350 kPa  
• Minimum run time: 0 seconds • Maximum run time: 10 seconds • Factory set run time: 5 seconds



**AVON21 BUILT-IN SHOWER VALVE NON-MIXING**  
**9506209**

- Solid all metal durable construction
- Complete with red, blue and yellow indices
- NSW Health complaint
- Self-closing shut off for water economy
- 8 Litres/Minute flow regulator included
- Easy timing adjustment ring

Based on 350 kPa  
• Minimum run time: 0 seconds • Maximum run time: 46 seconds • Factory set run time: 15 seconds



**AVON21 BUILT-IN SHOWER MIXER**  
**9506210**

- Anti-vandal design
- Suitable for concealed supply pipework
- Self-closing shut off for water economy

Based on 350 kPa  
• Minimum run time: 0 seconds • Maximum run time: 46 seconds • Factory set run time: 15 seconds



**SENSORFLOW21 DECK MOUNTED COMPACT BASIN SPOUT**  
**9506424**

- Modern angled design
- Ultra hygienic no-touch operation
- Built-in sensor, proximity activated, auto flow shut off when sensor obstructed
- Auto Cleanse facility and Smart Clean setting (remote control required)
- Copper Tails
- Requires pre-mixed water
- Mains power
- Anti-vandal outlet
- Laminar flow reduces airborne water
- WELS 6 star, 3.78 Litres/Minute
- Dedicated remote control available (see below)

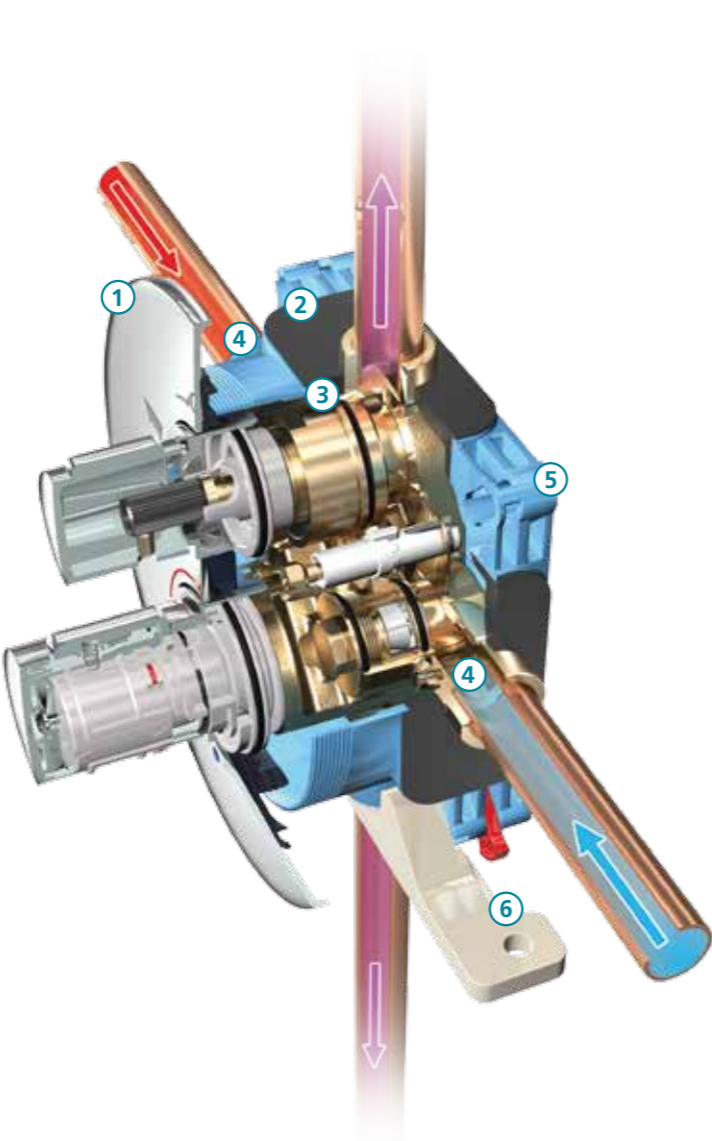
**REMOTE CONTROL FOR ELECTRONIC SENSOR MIXERS**  
**9506468**

- Easy to use
- Enable various disinfection routines
- Enable the sensor range and flow timings to be changed



EASYBOX SLIM THERMOSTATIC VALVE

- 1. Faceplate**  
Superior chromed metal faceplate with separate flow and temperature controls and recommended 40°C position for safe showering.
- 2. Watertight**  
Watertight solid brass body construction for durability.
- 3. Thermostatic cartridge**  
Proven thermostatic cartridge and flow control as used on many other Armitage Shanks showers to ensure trouble free operation.
- 4. Threaded inlet**  
Threaded inlet connections rotate for easier connection.
- 5. Outer plastic sealing box**  
Outer plastic sealing box gives increased strength and durability. It also has double sealing for superior water-tightness and to greatly reduce the possibility of leakage. The outer chromed metal faceplate is not a sealed item and can easily be removed for cleaning or servicing.
- 6. Versatile mounting bracket**  
Versatile mounting bracket (supplied) can be fitted to any of the 4 sides and fixed onto a cross bearer or upright in a cavity wall.



ARMAGLIDE2 HANDSHOWER SET WITH WALL BRACKET  
2500691

- Dual check valves included as standard – eliminating the possibility of potentially harmful back syphonage
- Single function flow without aeration to help reduce potentially harmful mist
- Easy to clean hose and handset design
- WELS 3 Star, 8.5 Litres/Minute
- Includes shower hose retaining clip that physically ensures an air gap at all times



ARMAGLIDE2 SLIDING HANDSHOWER SET  
2500761

- Dual check valves included as standard – eliminating the possibility of potentially harmful back syphonage
- Single function flow without aeration to help reduce potentially harmful mist
- Easy to clean hose and handset design
- WELS 3 Star, 8.5 Litres/Minute
- Includes shower hose retaining clip that physically ensures an air gap at all times



ARMAGLIDE2 HANDSHOWER SET WITH GRAB RAIL HOLDER  
2500763

- Dual check valves included as standard – eliminating the possibility of potentially harmful back syphonage
- Single function flow without aeration to help reduce potentially harmful mist
- Easy to clean hose and handset design
- WELS 3 Star, 8.5 Litres/Minute
- Suitable for use on all 32mm Grab Rails



ARMAGLIDE2 SHOWER HOSE RETAINING CLIP  
9506469

- Physically ensures an air gap at all times

EASYBOX SLIM SQUARE THERMOSTATIC VALVE  
9506359

- Safety stop button at 40°C
- Adjustable temperature stop
- Clear coloured markings
- Ceramic Disc flow control
- Chromed metal faceplate
- Double water sealing design
- Multiple installation options
- Point of use Thermostatic cartridge



EASYBOX SLIM SQUARE THERMOSTATIC VALVE  
WITH DIVERTER  
9506358

- Safety stop button at 40°C
- Adjustable temperature stop
- Clear coloured markings
- Ceramic Disc flow control
- Chromed metal faceplate
- Double water sealing design
- Multiple installation options
- Point of use Thermostatic cartridge



# The Complete Range

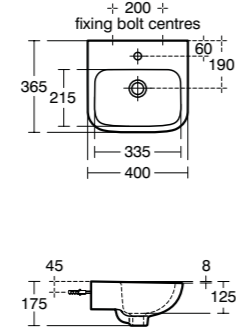
## PORTMAN21 WALL BASIN 400MM

1 CENTRE TAPHOLE WITH OVERFLOW  
9506079

1 RIGHT HAND TAPHOLE NO OVERFLOW  
9506078

1 LEFT HAND TAPHOLE NO OVERFLOW  
9506154

NO TAPHOLE NO OVERFLOW  
9506155



## PORTMAN21 WALL BASIN 500MM

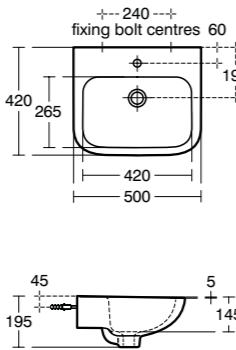
1 CENTRE TAPHOLE WITH OVERFLOW  
9506083

1 RIGHT HAND TAPHOLE NO OVERFLOW  
9506080

1 LEFT HAND TAPHOLE NO OVERFLOW  
9506156

NO TAPHOLE NO OVERFLOW  
9506081

2 TAPHOLE NO OVERFLOW  
9506082



## PORTMAN21 WALL BASIN 600MM

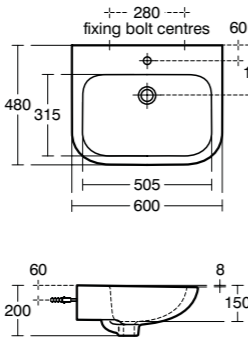
1 CENTRE TAPHOLE WITH OVERFLOW  
9506087

1 RIGHT HAND TAPHOLE NO OVERFLOW  
9506084

1 LEFT HAND TAPHOLE NO OVERFLOW  
9506157

NO TAPHOLE NO OVERFLOW  
9506085

2 TAPHOLE NO OVERFLOW  
9506086



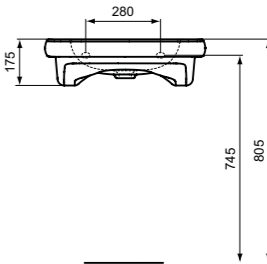
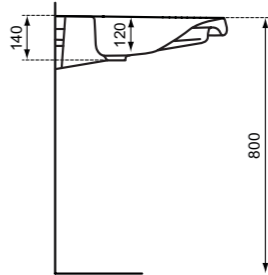
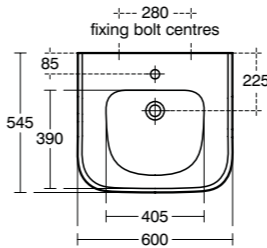
† Ideal for disabled and ambulant disabled users

## PORTMAN21 ACCESSIBLE WALL BASIN 600MM

1 CENTRE TAPHOLE WITH OVERFLOW  
9506088

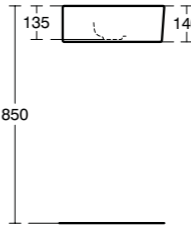
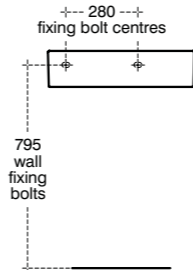
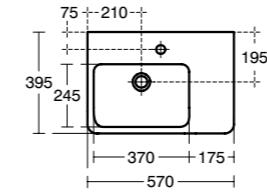
1 CENTRE TAPHOLE NO OVERFLOW  
9506089

NO TAPHOLE NO OVERFLOW  
9506150



## PORTMAN21 WALL BASIN 570MM WITH SHELF

1 RIGHT HAND TAPHOLE NO OVERFLOW  
9506090



† Ideal for disabled and ambulant disabled users

# The Complete Range

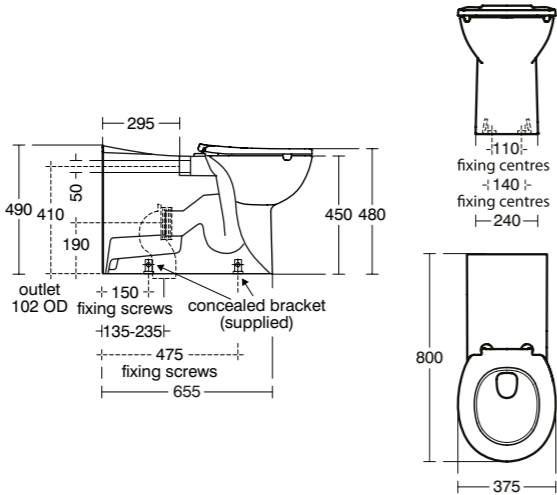
## PORTMAN21 BACK-TO-WALL RIMLESS 800MM PAN

PORTMAN21 PAN ONLY  
9505784

WITH SEAT  
SINGLE-FLAP WHITE (PACK)  
9505796

WITH SEAT  
SINGLE-FLAP STEEL BLUE (PACK)  
9505797

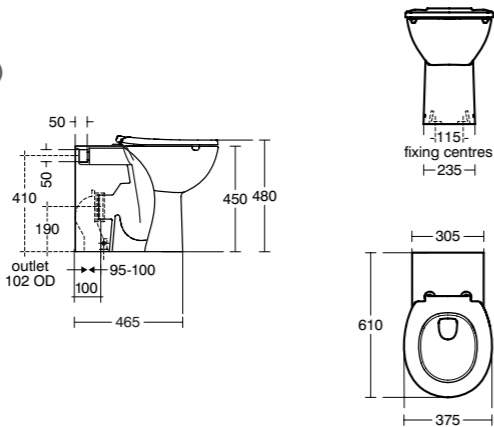
WITH SEAT  
SINGLE-FLAP GREY (PACK)  
9505798



## PORTMAN21 OVERHEIGHT BACK-TO-WALL RIMLESS 610MM PAN

PORTMAN21 PAN ONLY  
9506123

WITH SEAT DOUBLE-FLAP WHITE (PACK)  
9506344

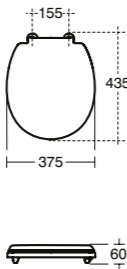


## PORTMAN21 TOILET SEAT

SINGLE-FLAP WHITE  
9505785

SINGLE-FLAP STEEL BLUE  
9505786

SINGLE-FLAP GREY  
9505787

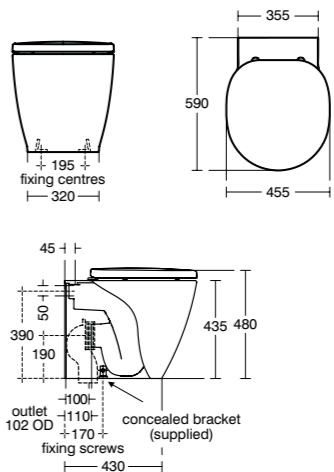


## PORTMAN21 XL BACK-TO-WALL PAN

XL BACK-TO-WALL PAN ONLY  
9505788

XL PAN AND SEAT SINGLE-FLAP WHITE (PACK)  
9505799

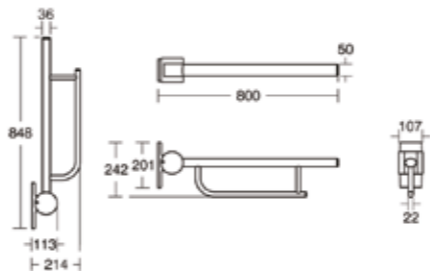
XL TOILET SEAT AND COVER DOUBLE-FLAP WHITE  
9505789



## PORTMAN21 HINGED SUPPORT RAIL 800MM WHITE

9506075

WHITE TOILET ROLL HOLDER FOR  
HINGED SUPPORT RAIL  
9506076

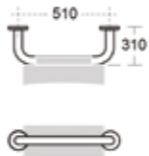


## PORTMAN21 BACK SUPPORT RAIL AND CUSHION

9506140

PORTMAN21 BACK SUPPORT RAIL WHITE  
9506074

CUSHION BACK SUPPORT  
9506077



† Ideal for disabled and ambulant disabled users  
▲ Ideal for ambulant disabled users

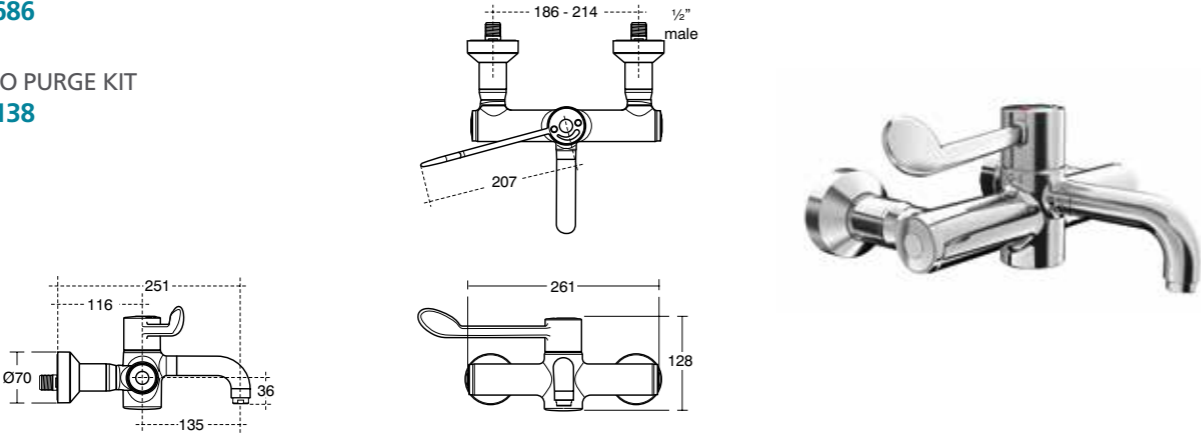
† Ideal for disabled and ambulant disabled users

# The Complete Range

## MARKWIK21 WALL MOUNTED THERMOSTATIC SURGEONS SET LEVER OPERATED WITH S CONNECTORS

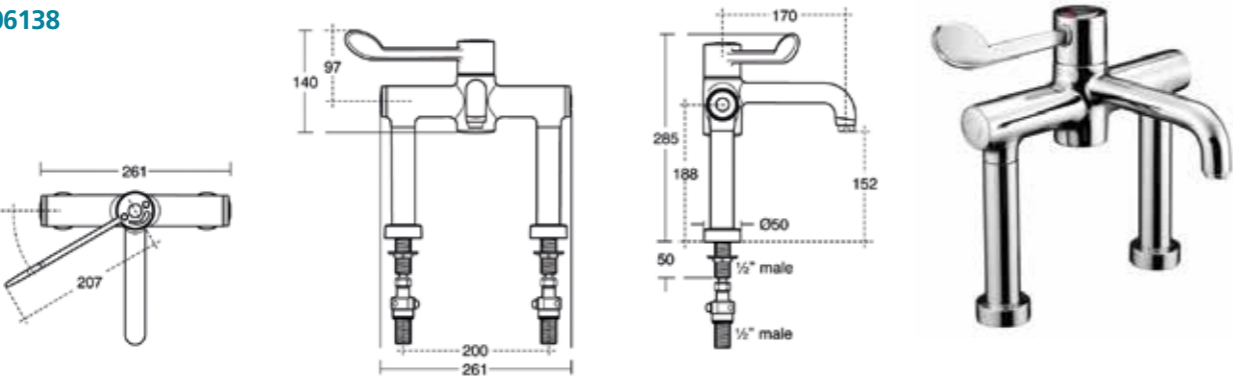
2500686

HYDRO PURGE KIT  
9506138



## MARKWIK21 HOB MOUNTED THERMOSTATIC SURGEONS SET 2500690

HYDRO PURGE KIT  
9506138



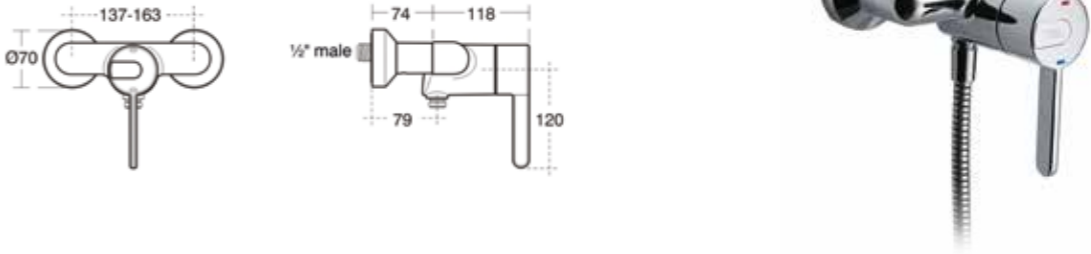
## MARKWIK21 THERMOSTATIC BASIN MIXER WITH COPPER TAILS 2500685

BIOGUARD OUTLET  
9506204

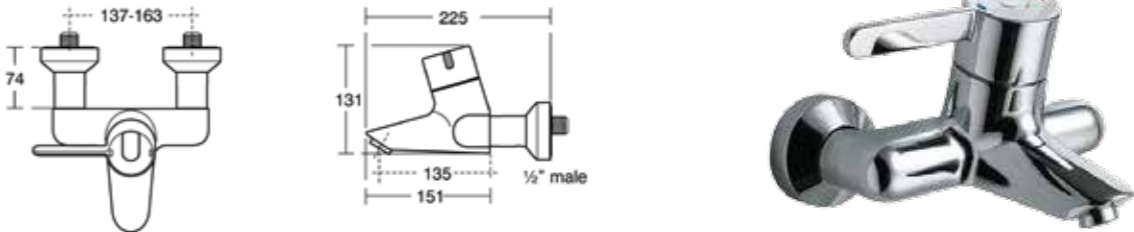


† Ideal for disabled and ambulant disabled users

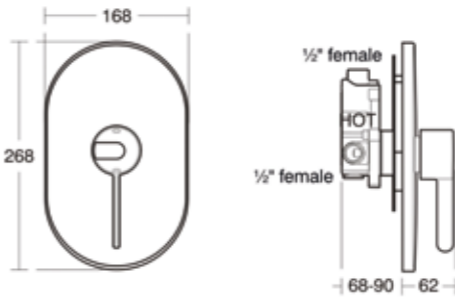
## MARKWIK21 EXPOSED THERMOSTATIC SHOWER MIXER WITH HANDSHOWER OUTLET 2500688



## MARKWIK21 EXPOSED THERMOSTATIC BATH MIXER WITH OUTLET 2500689



## MARKWIK21 CONCEALED THERMOSTATIC SHOWER MIXER 2500687



## MARKWIK21 ANTI-VANDAL SHOWER HEAD 9506211



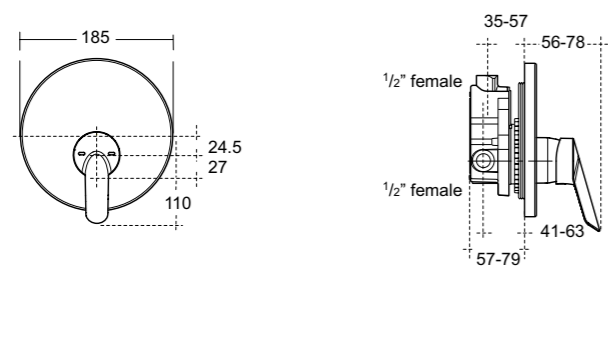
† Ideal for disabled and ambulant disabled users

# The Complete Range

PICCOLO21 SINGLE LEVER BASIN MIXER  
9506249



PICCOLO21 BUILT-IN SHOWER VALVE  
9506250

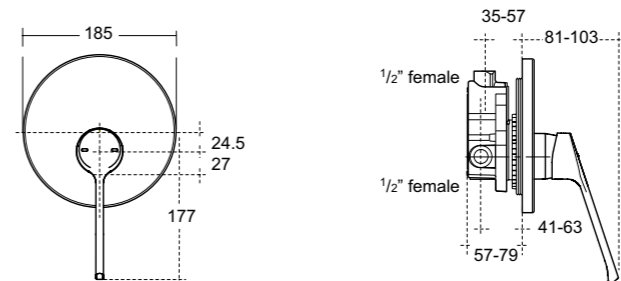


PICCOLO21 LONG LEVER BASIN MIXER  
9506251

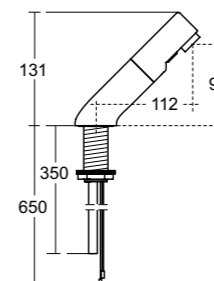


† Ideal for disabled and ambulant disabled users

PICCOLO21 LONG LEVER BUILT-IN SHOWER VALVE  
9506252



SENSORFLOW21 DECK MOUNTED COMPACT BASIN SPOUT  
9506424



REMOTE CONTROL FOR ELECTRONIC SENSOR MIXERS  
9506468

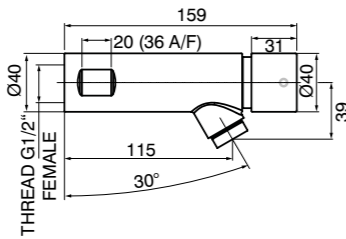


† Ideal for disabled and ambulant disabled users

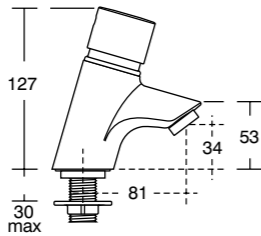
# The Complete Range

AVON21 BIB TAP NON-MIXING  
9506207

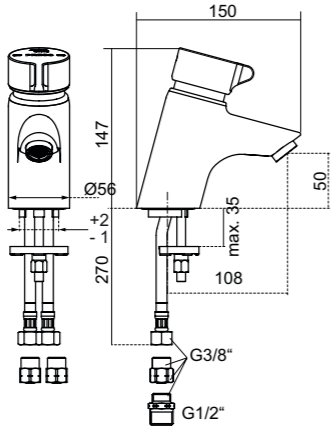
AVON BIB TAP NON-MIXING WITH WARM  
WATER ETCHING ON HANDLE  
9506425



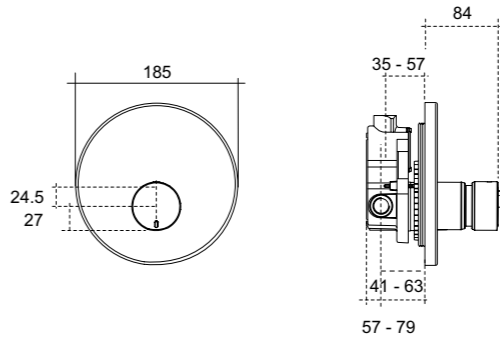
AVON21 PILLAR TAP  
9506205



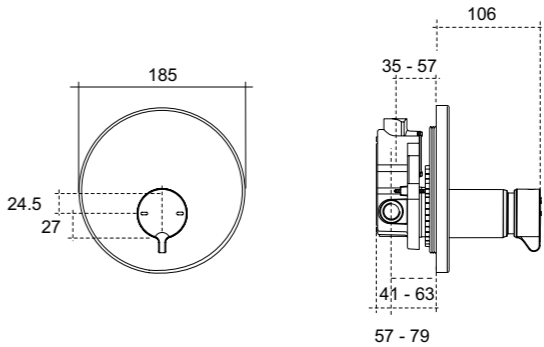
AVON21 BASIN MIXER  
9506206



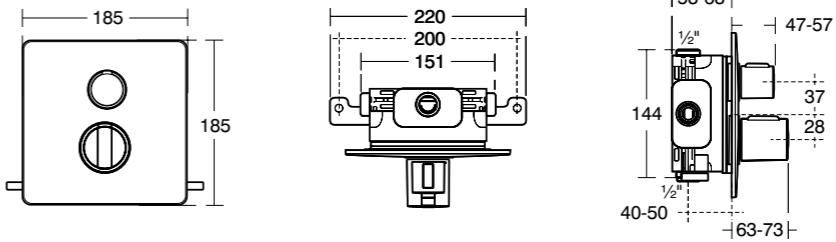
AVON21 BUILT-IN SHOWER VALVE NON-MIXING  
9506209



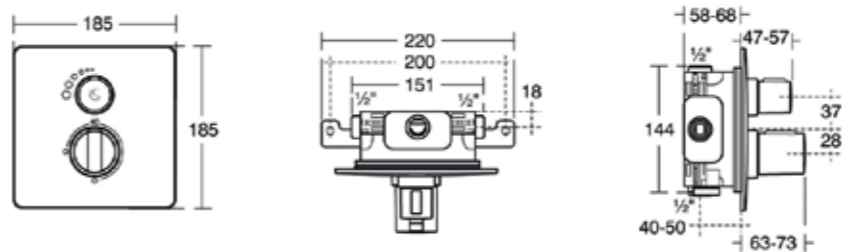
AVON21 BUILT-IN SHOWER MIXER  
9506210



EASY BOX SLIM SQUARE THERMOSTATIC VALVE  
9506359

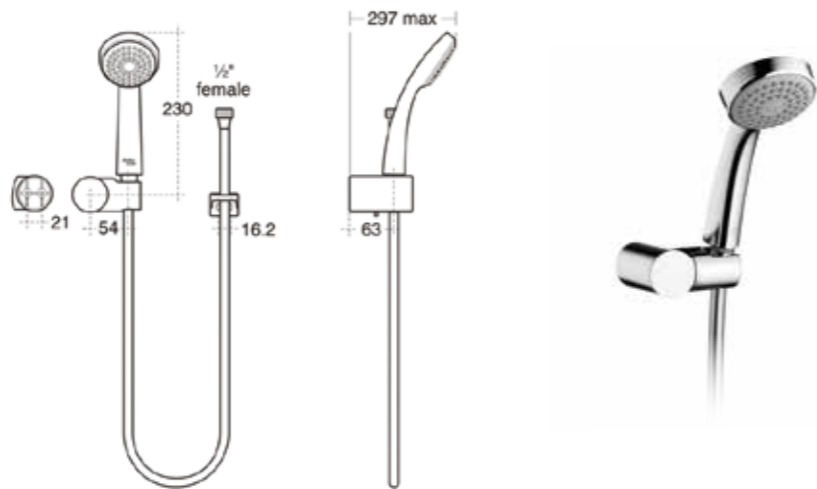


EASY BOX SLIM SQUARE THERMOSTATIC VALVE WITH DIVERTER  
9506358

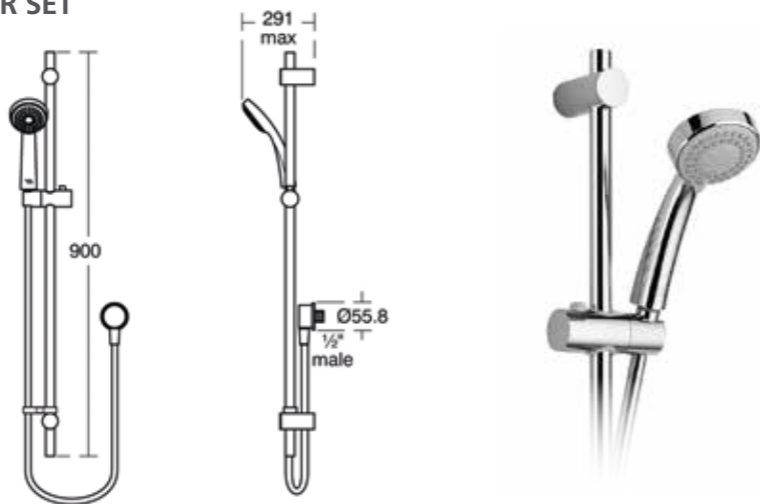


# The Complete Range

## ARMAGLIDE2 HANDSHOWER SET WITH WALL BRACKET 2500691

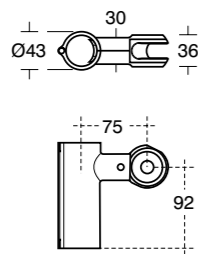


## ARMAGLIDE2 SLIDING HANDSHOWER SET 2500761



## ARMAGLIDE2 HANDSHOWER SET WITH GRAB RAIL HOLDER 2500763

## ARMAGLIDE2 SHOWER HOSE RETAINING CLIP 9506469



† Ideal for disabled and ambulant disabled users

# Product Quality Guarantee



25 years **all ceramic products**



5 years **showers, taps, mixers, grab rails and back rests**



10 years **cartridges**

Armitage Shanks products are covered by the above product replacement warranties. For full warranty details visit [www.reece.com.au/warranties](http://www.reece.com.au/warranties)



Continuing to Innovate

Armitage Shanks pursues a policy of continuing improvement in design and performance of its products. The right is therefore reserved to vary specifications without notice.

Colour reproduction is as accurate as possible within the limitations of the printing process.

© ARMITAGE SHANKS LTD  
02/16

For your nearest Reece store call **1800 032 566** or visit [www.reece.com.au](http://www.reece.com.au)

Reece Onsite customers should contact their local Reece Onsite representative for all Commercial needs.

Due to limitations in the printing process the colours in this brochure are a guide only. The manufacturer/distributor reserves the right to vary specifications or delete models from their range without prior notification. The manufacturer/distributor takes no responsibility for printing errors.

*Armitage  
Shanks*

