

# EVERHOT®

## DUAL HANDED ELECTRIC



Everhot dual handed electric water heaters feature a durable vitreous enamel lining, and reliable performance you expect from a product manufactured by Rheem. They offer outstanding value, and come in a wide range of models with a capacity to suit most domestic applications.

### FEATURES

- Complete model range (25L – 400L)
- Fast, easy like-for-like replacement
- Dual handed inlet and outlet fittings
- Mains pressure
- 25L – 160L models feature compact dimensions and easy to access fittings
- Plug in models available in 25L and 50L<sup>9</sup>
- 160L – 400L models suit connection to concessional (off-peak) tariffs
- Twin element models available in 250L, 315L and 400L
- 7 year cylinder warranty<sup>8</sup> on 25L and 50L models
- 10 year cylinder warranty<sup>8</sup> on 80L, 125L, 160L, 250L, 315L and 400L models
- Full warranty support through a comprehensive national service network

Product data: page 12



# DUAL HANDED ELECTRIC

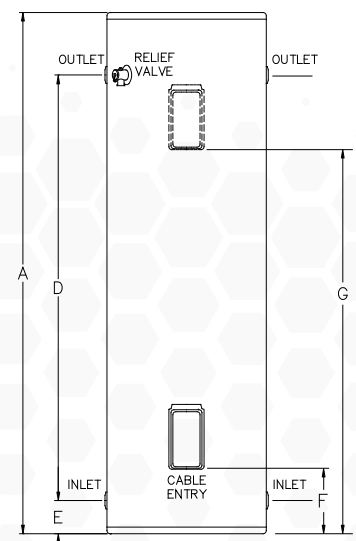
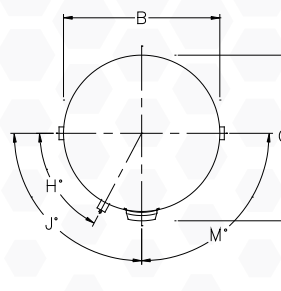
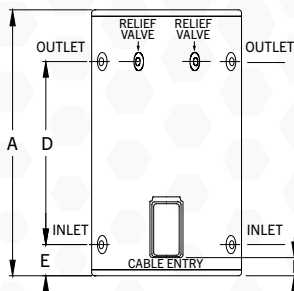
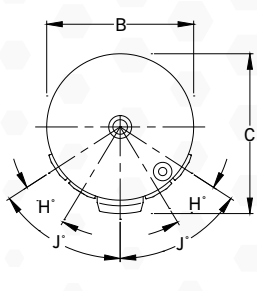
SPECIFICATIONS		25L	50L	80L	125L	160L	250L	315L	400L
Dual Handed Electric – Single Element	Everhot Model Number	291025 291025/P <sup>9</sup>	291050 291050/P <sup>9</sup>	281080	281125	281160	291250	291315	291400
	Reece Product Code	1303672 1303673 <sup>9</sup>	1303674 1303675 <sup>9</sup>	1303676	1303678 (3.6kW) and 1303677 (1.8kW)	1366115 (3.6kW) and 1366116 (2.4kW)	1303565 (3.6kW) and 1303566 (4.8kW)	1300794 (3.6kW) and 1300795 (4.8kW)	1303567
Dual Handed Electric – Twin Element	Everhot Model Number					292250		292315	292400
	Reece Product Code							1303927	1303928 (3.6kW) and 1303929 (4.8kW)
Hot Water Delivery	Litres	25	50	80	125	160	250	315	400
Boost Capacity	Litres	–	–	–	–	–	50	50	90
kW Rating	1.8	–	–	–	✓	–	–	–	–
	2.4	✓	✓	–	–	✓	–	–	–
	3.6	✓	✓	✓	✓	✓	✓	✓	–
	4.8	–	–	–	–	–	✓*	✓	✓
Relief Valve Setting	kPa	1000	1000	1000	1000	1000	1000	1000	1000
Expansion Control Valve	kPa	850	850	850	850	850	850	850	850
<b>Max Water Supply Pressure:</b>									
with ECV	kPa	680	680	680	680	680	680	680	680
without ECV	kPa	800	800	800	800	800	800	800	800
Water Hot and Cold Connections		Rp ¾	Rp ¾	Rp ¾	Rp ¾	Rp ¾	Rp ¾	Rp ¾	Rp ¾
<b>Dimensions</b>									
A	mm	430	695	875	1250	1550	1395	1640	1840
B	mm	400	400	460	480	480	640	640	690
C	mm	436	436	496	515	494	680	680	730
D	mm	106	397	475	853	1150	1109	1317	1479
E	mm	142	142	194	194	200	73	113	121
F	mm	60	60	112	112	95	103	103	105
G	mm	–	–	–	–	–	988	1228	1323
H	degrees	26	26	22	22	23	32	32	30
J	degrees	64	59	60	60	60	88	88	83
M	degrees	–	–	60	60	60	92	92	97
Approx. Weight (inc. packaging)	kg	19	26	32	45	56	82	97	120

Technical data is subject to change.

\*4.8kW element rating not available in 250L twin element model range.

## 25L – 50L Electric Models

## 80L – 400L Electric Models



- Warranty (25L and 50L): 7 Years on Cylinder, 1 Year Labour on Cylinder, 1 Year Parts and Labour warranty on all other components for Domestic (non-Commercial) installations. Conditions apply. See the Everhot warranty set out in the Owner's Guide and Installation Instructions or view online at [www.reece.com.au/Everhot](http://www.reece.com.au/Everhot).
- Warranty (80L, 125L, 160L, 250L, 315L, and 400L) 10 Years on cylinder, 1 Year Labour on Cylinder, 1 year Parts and Labour warranty on all other components for Domestic (non-Commercial) installations. Conditions apply. See the Everhot warranty set out in the Owner's Guide and Installation Instructions or view online at [www.reece.com.au/Everhot](http://www.reece.com.au/Everhot).
- 25 and 50 litre plug and lead models may only be used indoors.
- Guide only, subject to individual hot water consumption patterns.