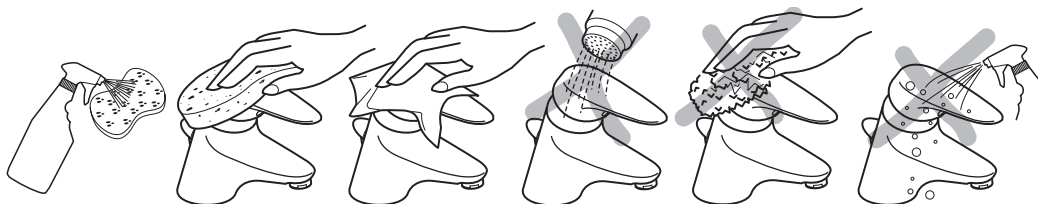




## CLEANING CHROME SURFACES

When cleaning chromed products use only a mild detergent, rinse & wipe dry with a soft cloth. Ideally clean after each use to maintained appearance.

Never use abrasive, scouring powders or scrapers. Never use cleaning agents containing alcohol, ammonia, hydrochloric acid, sulphuric acid, nitric acid, phosphoric acid or organic solvents. Use of incorrect cleaning products / methods may result in chrome damage which is not covered by the manufactured guarantee.



Customer Care Help Line  
**+44(0) 844 543 6170**

Customer Care Fax  
**+44(0) 844 543 6171**

E-MAIL  
aftersalesnonresidential@armitageshanks.co.uk

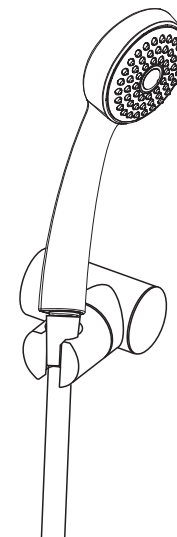
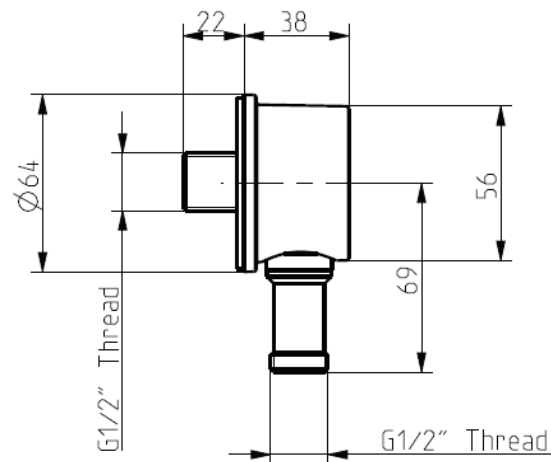
Armitage Shanks Ltd pursues a policy of continuing improvement in design and performance of its products.

The right is therefore reserved to vary specification without notice.

Armitage Shanks Ltd  
Armitage Near Rugeley  
Staffordshire  
WS15 4BT  
England  
+44(0)870 122 8822

05.15/B665306

## ARMAGLIDE 2 SHOWER KIT INSTALLATION INSTRUCTION



B8470AA Shower Set Single Function

### National Plumbing & Drainage Code

The product covered by this installation and maintenance instruction must be installed in accordance with the provision of AS/NZS 3500 & any relevant local regulations.

Installations not complying with AS/NZS 3500 may void the product performance & warranty.

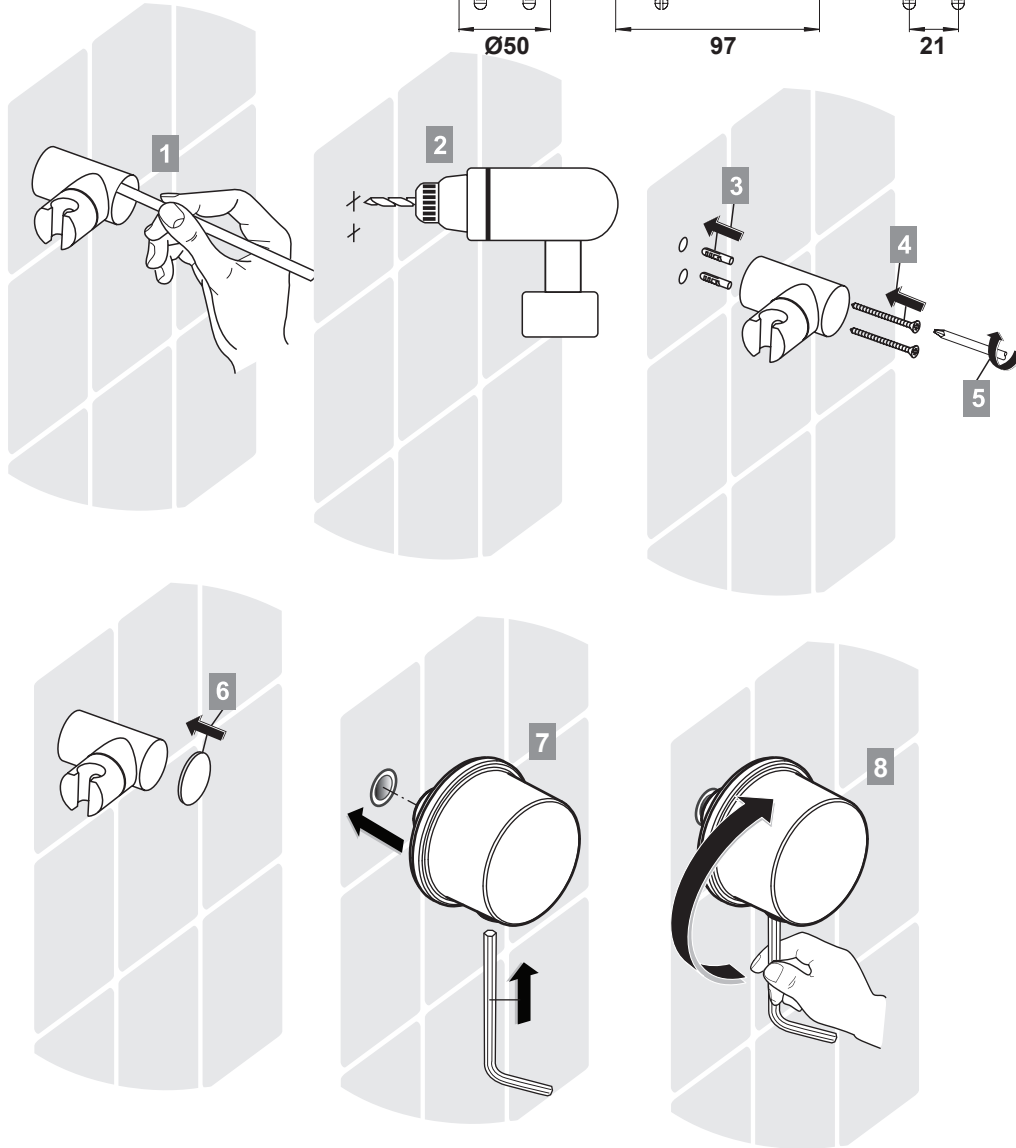
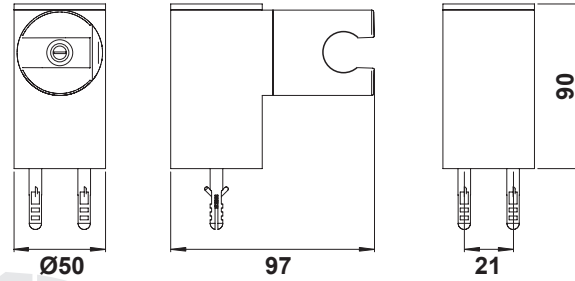
Armitage Shanks strongly recommends that this product is fitted by a professional installer.

*Armitage  
Shanks*






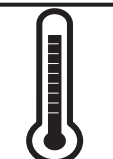
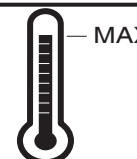
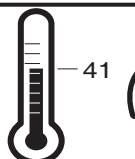

INSTALLER:

After installation please pass this instruction booklet to the user

B8470AA

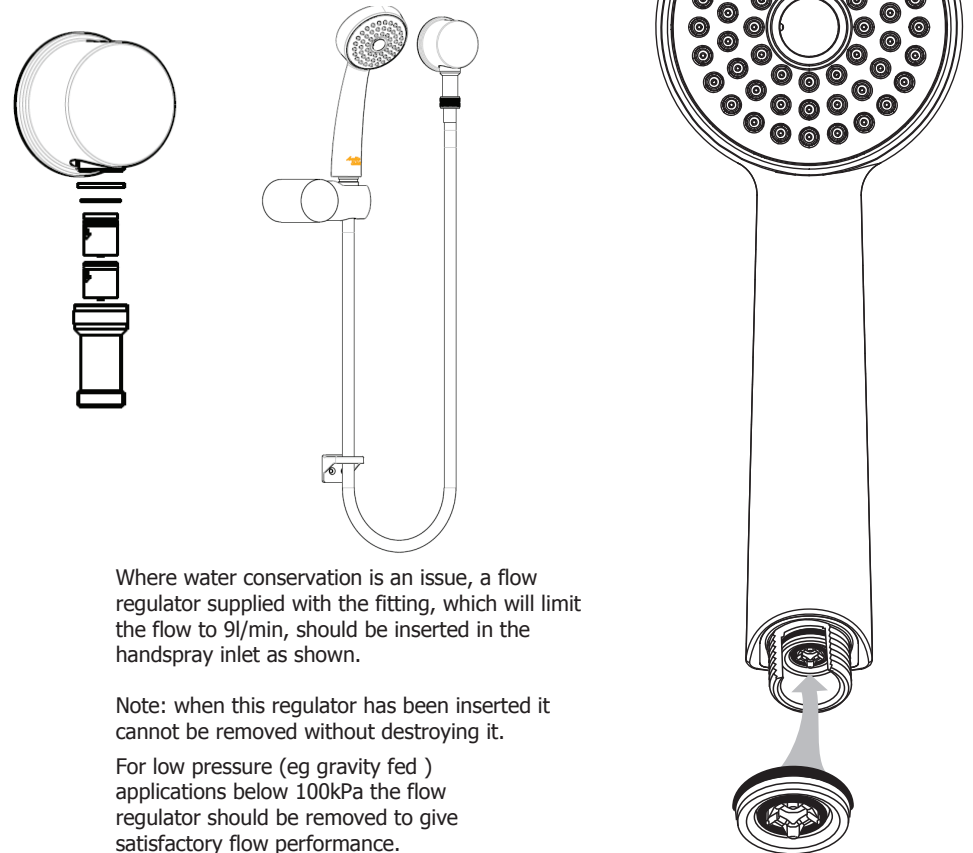


## HANDSPRAY FLOW REGULATOR

	P	kPa				
	T	°C				l/min
						9

This product is suitable for high pressure applications only.

In accordance with AS-NZS 6400 this product is supplied with a 9LPM flow regulator. With the regulator installed the product is not suitable for low pressure plumbing systems.



Where water conservation is an issue, a flow regulator supplied with the fitting, which will limit the flow to 9l/min, should be inserted in the handspray inlet as shown.

Note: when this regulator has been inserted it cannot be removed without destroying it.

For low pressure (eg gravity fed ) applications below 100kPa the flow regulator should be removed to give satisfactory flow performance.



## REECE PRODUCT QUALITY GUARANTEE

You have purchased a product from Reece Australia Pty Ltd ABN 84 004 097 090 ("Reece"). This product is covered by a 5 year replacement product warranty and a 12 month warranty over spare parts and labour.

### 5 YEAR PRODUCT WARRANTY

This warranty covers faults in the construction, material and assembly of finished products. Products which are within 5 years from the date of purchase, found upon inspection by an authorised Reece representative to be defective in construction, material or assembly, will be repaired or exchanged with an equivalent product free of charge. Replaced items become Reece's property.

This warranty also covers any spare parts included under "Manufacturer's Provisions" below.

### Manufacturer's Provisions

The following spare parts are covered by a 10 year warranty:

- Mixer Cartridge

### ONE YEAR SPARE PARTS WARRANTY

Spare parts other than those listed in the Manufacturer's Provisions above which are within 1 year from the date of purchase found upon inspection by an authorised Reece representative to be defective in construction, material or assembly will be replaced free of charge. Replaced items become Reece's property.

### AVAILABILITY OF REPLACEMENT PRODUCTS AND SPARE PARTS

All replacement products and spare parts will be available for collection without charge to the customer at the nearest Reece branch to the customer's location, or elsewhere as agreed between the customer and Reece.

### LABOUR

The labour for the replacement of products that are within one year from the date of purchase found upon inspection by an authorised Reece representative to be defective in construction, material or assembly, and in relation to all spare parts to which this warranty applies, will be supplied by Reece or the relevant supplier using licensed plumbers engaged by Reece or the relevant supplier

### WARRANTY CONDITIONS

This warranty will apply only under all of the following conditions:

- The item has been installed by a licensed plumber
- Failure is due to a fault in the manufacture of the product
- Proof of purchase (including the date of purchase) is provided
- The installation of the product is in accordance with the instructions provided
- The product has been installed in valid applications as stated in accordance with the recommended use

This warranty does not cover products purchased as an ex-display without being fully checked and tested for sale by the manufacturer.

This warranty does not include faults caused by:

- Unsuitable or improper use
- Incorrect installation or installation not in accordance with the instructions provided
- Installation or part installation by any person other than a LICENSED PLUMBER who is suitably qualified to install the product, or a Licensed Electrician where applicable.
- Normal wear and tear
- Inadequate or complete lack of maintenance
- Chemical, electrochemical or electrical influences
- Harsh detergents or abrasive cleaners used on product finishes

### EXCLUSIONS

To the fullest extent permitted by law, Reece excludes all liability for damage or injury to any person, damage to any property, and any indirect consequential or other loss or damage.

### CLAIM PROCEDURE

For all warranty queries customers are to contact the branch where the product was purchased. These details can be found on your purchase invoice.

General contact details for Reece are as follows:

Reece Australia Pty Ltd  
118 Burwood Hwy  
Burwood VIC 3125  
+61 3 9274 0000  
admin@reece.com.au

The benefits given by this warranty are in addition to the other rights and remedies that consumers may have under the Australian Consumer Law and any other applicable laws.

Our goods come with guarantees that cannot be excluded under the Australian Consumer Law. You are entitled to a replacement or refund for a major failure and for compensation for any other reasonably foreseeable loss or damage. You are also entitled to have the goods repaired or replaced if the goods fail to be of acceptable quality and the failure does not amount to a major failure.