

HVAC Lugged Butterfly Valve

DN 50-300 Non-Potable Water

Specifications

Recommended use	Dura Industrial butterfly valves are selected for use in HVAC and non-potable water applications. The Dura Industrial butterfly valve is a soft sealing valve for installation with flanges drilled in accordance with AS 2129 Table E. Engineered for long-term, maintenance-free performance.
Features	Light-weight compact design. Ductile Iron with EPDM encapsulated stainless steel seat. Epoxy coating to provide corrosion resistance. Low torque operation.
Pressure	Working - 1600kPa Shell Test - 2400kPa Seat - 1760kPa
Temperature Range	-10°C to 120°C
Warranty	12 Months
Standards	ATS 5200.012 Flange - AS2129 Table E Top Flange - ISO5211/1

Product Image

Materials

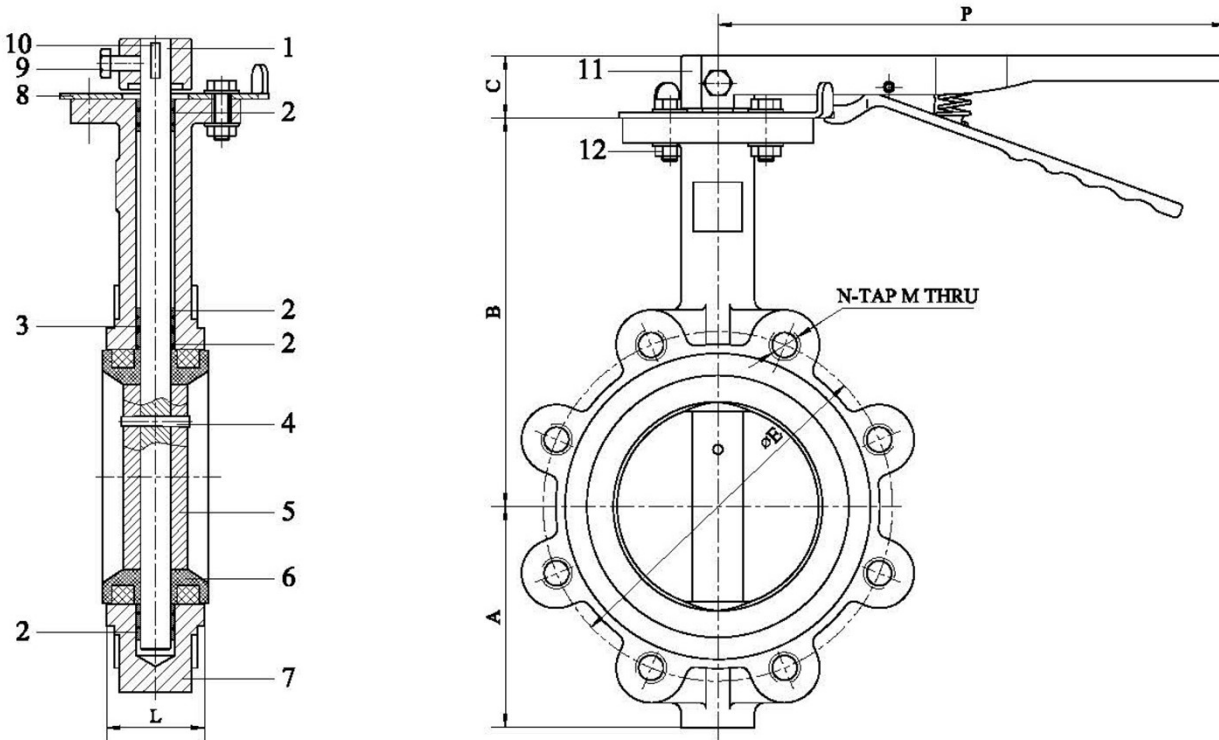
Item	Description	Material
1	Stem	Stainless Steel 410
2	Bushing	PTFE
3	O-Ring	EPDM
4	Taper Pin	Stainless Steel 316
5	Disc	CF8 Alloy
6	Seat	EPDM
7	Body	Ductile Iron
8	Locking Plate	Stainless Steel 304
9	Locking Screw	Stainless Steel 304
10	Key	Carbon Steel
11	Lever	Malleable Cast Iron
12	Bolt & Nut	Stainless Steel 304



HVAC Lugged Butterfly Valve

DN 50-300 Non-Potable Water

Product Drawing



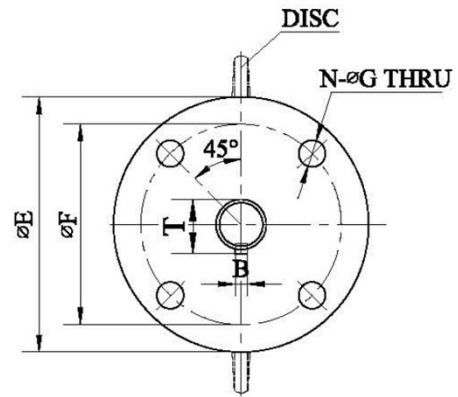
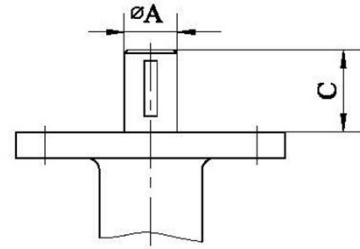
Dimensions

Code	Description	Size DN	Weight kg	Bolt Holes	A mm	B mm	C mm	AS2129 TABLE E			L mm	P mm	Torque N-M
								øE	M	N			
1103461	DURA IND BFLY VALVE LUG TE LEVER 50	50	3.5	4	76	162	28	114	M16	4	42	260	19
1103462	DURA IND BFLY VALVE LUG TE LEVER 65	65	3.75	4	89	174	28	127	M16	4	45	260	31
1103463	DURA IND BFLY VALVE LUG TE LEVER 80	80	4.3	4	95	181	28	146	M16	4	45	260	40
1103464	DURA IND BFLY VALVE LUG TE LEVER 100	100	6.7	8	114	200	28	178	M16	8	52	260	65
1103465	DURA IND BFLY VALVE LUG TE LEVER 125	125	9.1	8	127	213	28	210	M16	8	54	260	102
1103466	DURA IND BFLY VALVE LUG TE LEVER 150	150	10.75	8	139	225	28	235	M20	8	56	260	148
1103467	DURA IND BFLY VALVE LUG TE LEVER 200	200	19	8	177	260	38	292	M20	8	60	360	240
1103468	DURA IND BFLY VALVE LUG TE LEVER 250	250	29	12	203	292	38	356	M20	12	66	360	380
1103469	DURA IND BFLY VALVE LUG TE LEVER 300	300	37	12	242	337	38	406	M24	12	77	360	538

HVAC Lugged Butterfly Valve

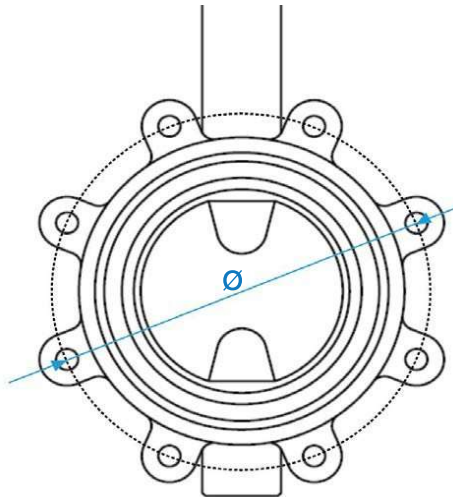
DN 50-300 Non-Potable Water

Top Flange Dimensions							
Size DN	ϕA	B	C	ϕE	ϕF	N- ϕG	T
50	12.7	3	28	65	50	4- $\phi 7$	13.9
65	12.7	3	28	65	50	4- $\phi 7$	13.9
80	12.7	3	28	65	50	4- $\phi 7$	13.9
100	15.88	5	28	90	70	4- $\phi 9.5$	17.9
125	19.05	5	28	90	70	4- $\phi 9.5$	21.05
150	19.05	5	28	90	70	4- $\phi 9.5$	21.05
200	22.23	5	38	125	102	4- $\phi 11.5$	24.2
250	28.58	8	38	125	102	4- $\phi 11.5$	31.6
300	31.75	8	38	125	102	4- $\phi 11.5$	34.8



Pitch Circle Diameter (ϕ)

Size DN	Pitch Circle Diameter (ϕ) mm
50	114
65	127
80	146
100	178
125	210
150	235
200	292
250	356
300	406



Lever Handle (Spare Part)

Code	Description	Size DN	Weight kg
1103470	DURA IND BFLY VLV LEVER ONLY 50-80	50-80	0.44
1103471	DURA IND BFLY VLV LEVER ONLY 100	100	0.56
1103472	DURA IND BFLY VLV LEVER ONLY 125-150	125-150	0.52
1103473	DURA IND BFLY VLV LEVER ONLY 200	200	1.22
1103474	DURA IND BFLY VLV LEVER ONLY 250	250	1.4
1103475	DURA IND BFLY VLV LEVER ONLY 300	300	1.36



Disclaimer: Products in this specification manual must by regulation be installed by licensed and registered trade people. The manufacturer/distributor reserves the right to vary specifications or delete models from their range without prior notification. Dimensions and set-outs listed are correct at time of publication however the manufacturer/distributor takes no responsibility for printing errors.