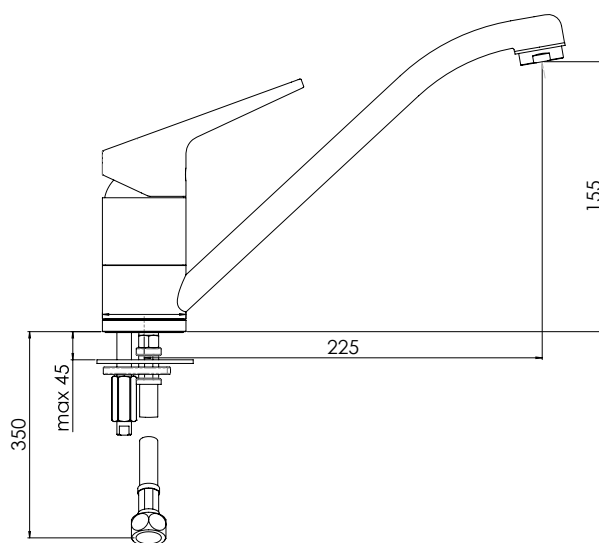


POSH

SOLUS MKII STANDARD SINK MIXER



SPECIFICATIONS

Recommended use	Domestic, hotel and commercial.
Colour availability	Chrome.
Pressure rating	Minimum operating pressure 50 kpa Maximum operating pressure 1000 kpa For best performance and longer life we recommend 350-500 kpa as per AS/NZS3500
Temperature rating	Maximum hot temperature 80° (recommended 65°) Minimum temperature 1°
WELS	Stars: 4 Flow rate: 7.5 L/min
Suitable Hot Water Units	Storage tank: Yes Continuous Flow: Yes Gravity Feed: Not recommended



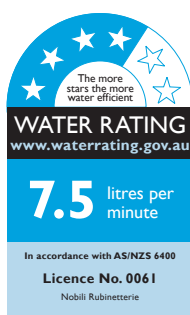
To see the complete Posh range go to www.reece.com.au/bathrooms

CLEANING RECOMMENDATIONS

We recommend the use of soapy water or approved cleaners.

This product should not be cleaned with abrasive materials.

Damage caused by any improper treatment is not covered by the product warranty- refer to Warranty Conditions



Disclaimer: Products in this specification manual must by regulation be installed by licensed and registered trade people. The manufacturer/distributor reserves the right to vary specifications or delete models from their range without prior notification. Dimensions and set-outs listed are correct at time of publication however the manufacturer/distributor takes no responsibility for printing errors.

Tech Page Version 1

Posh



POSH

SOLUS MKII STANDARD SINK MIXER

INSTALLATION INSTRUCTIONS

Note:

When a Gravity Feed hot water unit will be used in conjunction with this mixer, it is recommended that the low-pressure model be installed.

Note:

Mixer must be installed by a qualified plumber.

Important

Your mixer comes to you already factory assembled and tested. We do not recommend the dismantling of any internal part of the mixer. The mixers are factory tested and sealed so as to give the best performance.

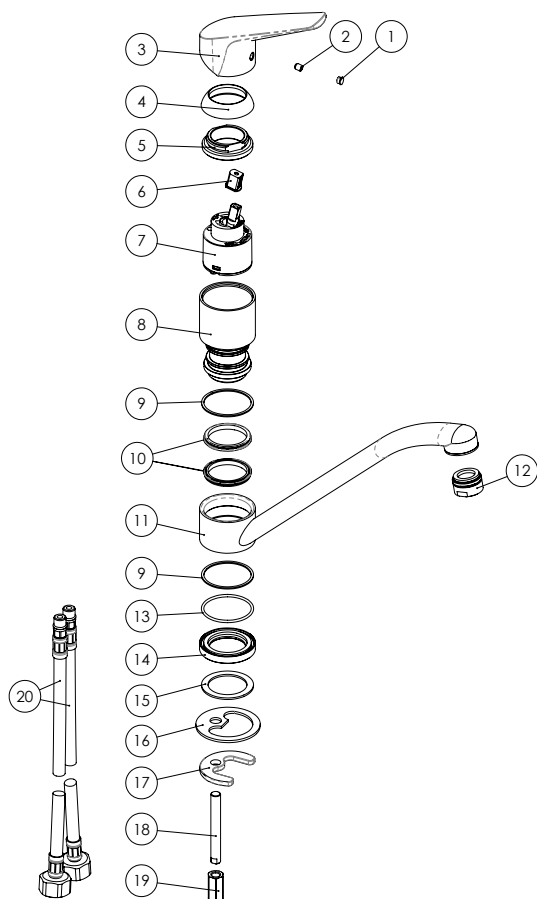
1. Please flush out new pipe work prior to connecting the new mixer.
2. All mixers should be installed with isolating stop cocks (Arco brand recommended).
3. In some areas where the incoming water exceeds 500kpa, an approved pressure limiting device must be installed. Equal pressure for hot and cold water supply is required for this single lever mixer.
4. Mixers are recommended for use on mains pressure and instantaneous systems only. For gravity feed units the low pressure model should be installed.

5. Place the base washer into position (15).
6. Fit the mixer body into the sink hole making sure first that the flexible connectors (20) are firmly tightens into base of the body.
7. Do not use teflon tape on threads.
8. From underneath apply your washer (16) prior to positioning the horse shoe plate (17) and fixing nut (19).
9. Lock the mixer onto the sink by tightening the fixing nut (19).
10. Clean aerator (12) at regular intervals, particularly if you notice a drop in pressure.

SERVICING-REPLACEMENT OF CARTRIDGE

1. Lift off indicator cap (1) and unscrew the locking screw (2).
2. Lift off lever (3) and remove dress ring and locking nut (4 & 5)
3. Lift out cartridge (7) and replace with new, making sure the two lugs on bottom of the cartridge sit properly into the allocated holes at the base of the body (8).

EXPLODED VIEW



Item	Description	Spare Part Code
1	Indicator cap	
2	Grub screw	
3	Standard mixer handle	
4	Cartridge Dome	192033
5	Locking nut for cartridge	
6	Thermal barrier	191825
7	Cartridge	192020
8	Mixer Body	
9	Washer	
10	Seal (Pair)	192038
11	Spout	
12	Aerator	
13	Seal	9500381
14	Dress Ring	
15	Washer	
16	Under Bench Washer	192047
17	Horse Shoe Plate	192047
18	Fixing Rod	
19	Fixing Nut	192047
20	Inlet Hoses	

Plumbers, please ensure a copy of the installation instructions is left with the end user for future reference

Posh

reece