

# Base.

## Base MK2 Sink Mixer Chrome

### INSTALLATION

#### Note

The installation must comply with requirements AS/NZS 3500. Mixer must be installed by a licenced plumber.

#### Important

Your mixer comes to you already factory assembled and tested. We do not recommend the dismantling of any internal part of the mixer. The mixers are factory tested and sealed so as to give the best performance.

1. Please flush out new pipe work prior to connecting the new mixer.
2. All mixers should be installed with isolating stop cocks (Arco brand recommended).
3. This tap is suitable for high pressure applications where both hot and cold water supply pressures are at 150kPa or above.
4. Place the washer into position.
5. Fit the tap body (10) into the sink hole making sure first that the flexible connectors (19,20) are firmly tightened into the base of the body.

6. Do not use teflon tap on threads.

7. From underneath apply your washer (15) prior to positioning the horse shoe plate (16).

8. Lock the mixer onto the sink or benchtop by tightening the lock nuts (18).

9. Connect the flexible hoses to the hot and cold isolating stops, hand tighten plus half a turn of the nut to provide a watertight joint. Ensure that hoses are not under tension, twisted or kinked and if bent have a minimum radius of 30mm.

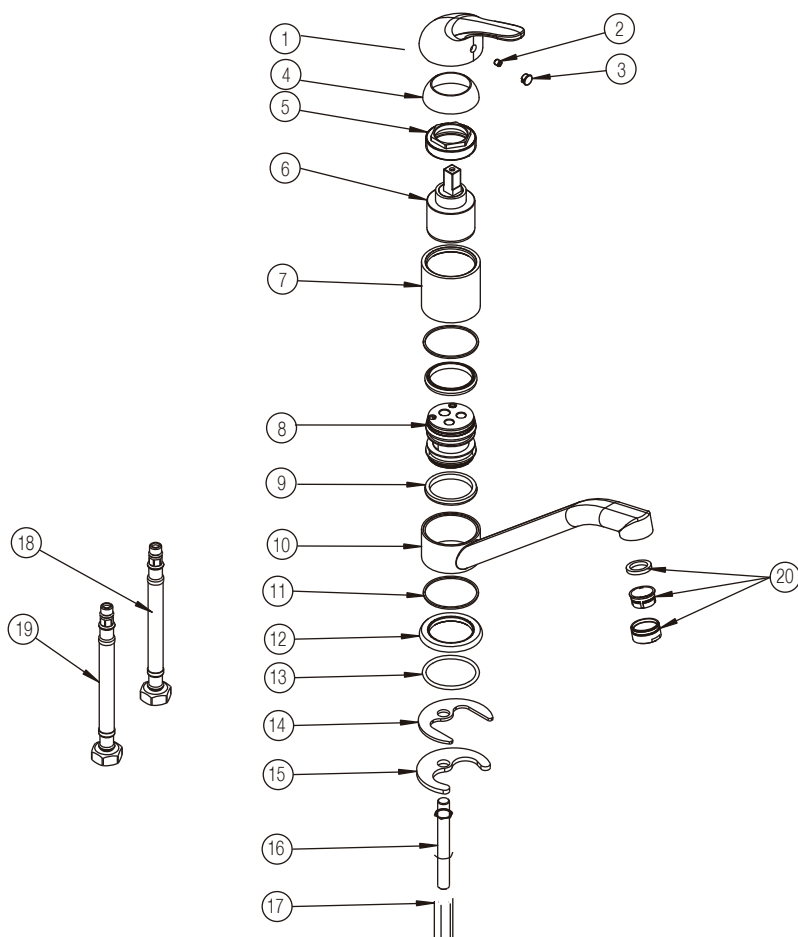
10. Check for leaks.

#### Servicing - Replacement of Cartridge

1. Remove cap (3) and unscrew the grub screw (2) using allen key.

2. Lift off handle and remove the cartridge dome (4), unscrew brass locking nut (5) and lift out cartridge (6).

3. Replace the cartridge (6), replace the brass locking nut (5), cartridge dome (4) and replace handle (1). Tighten grub screw (3) and push in indicator cap (2).



#### Exploded View

##### Item Description

##### Product Code

1-3	Sink Mixer Handle Complete	9502420
4	Cartridge Dome	
5	Cartridge Lock Nut	
6	Cartridge	9502422
7-13	Mixer Body	
14-17	Sink Mixer Fixing Kit	9502427
18	Flexible Hose (Hot)	9502424
19	Flexible Hose (Cold)	9502425
20	Aerator Complete	9502423

Plumbers, please ensure a copy of the installation instructions is left with the end user for future reference