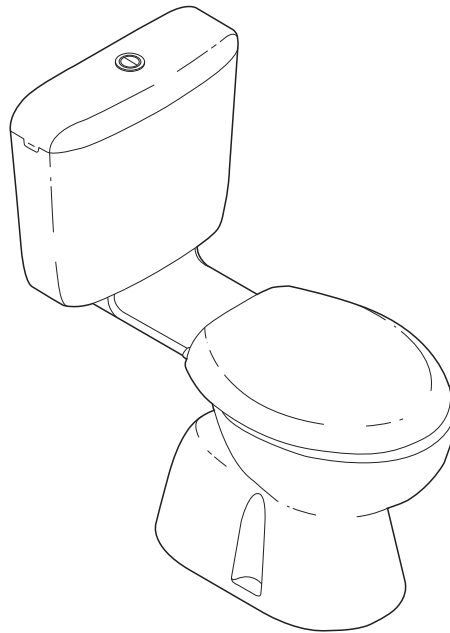
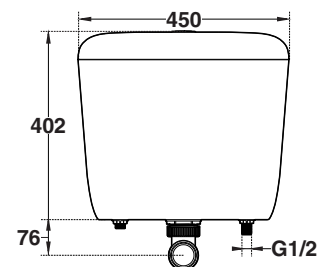
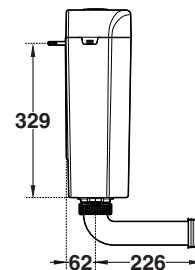
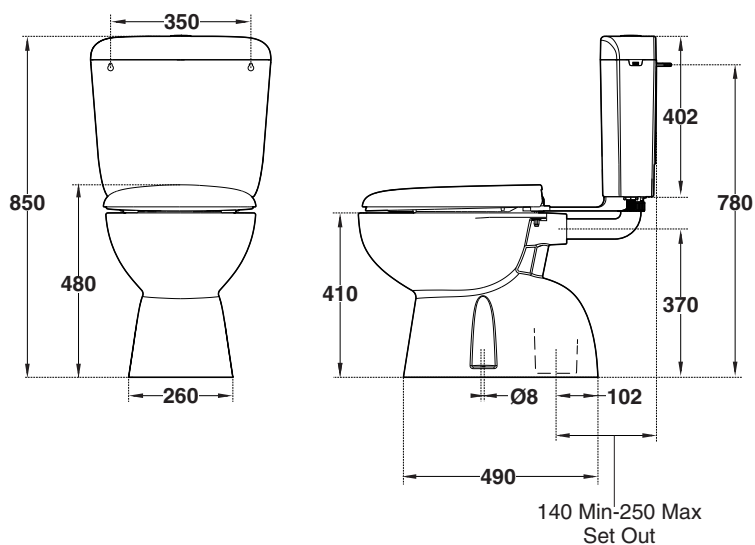
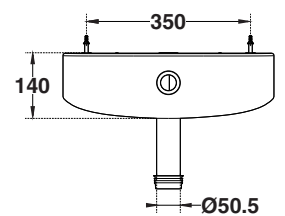
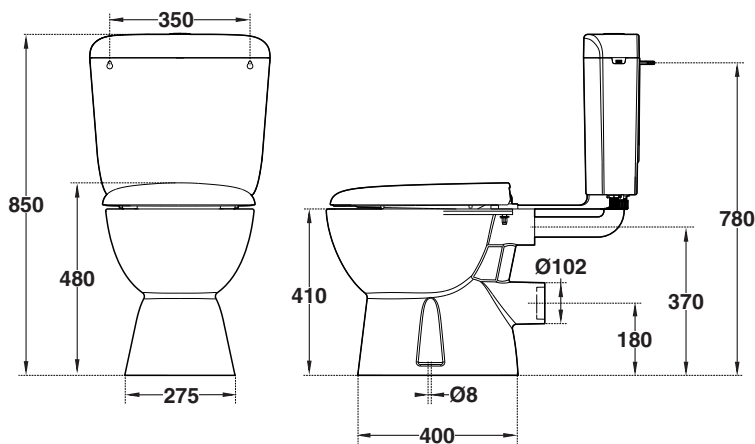


posh

Solus Link Plastic Cistern (4*)



Drawing



Solus Link Plastic Cistern (4*)

Prior To Installation



The installation of this Toilet Suite shall be in line with the normal minimum requirements in AS/NZS 3500.2



For timber stud and non-structural walls, the cistern should be fixed to a noggin or solid wall.



Flush the water supply line.

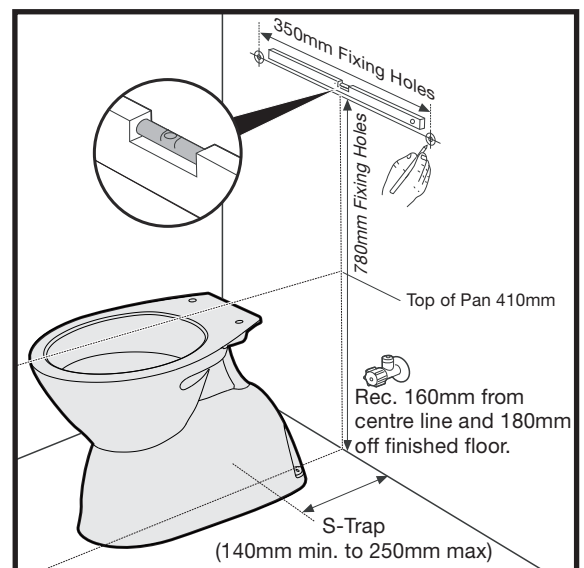
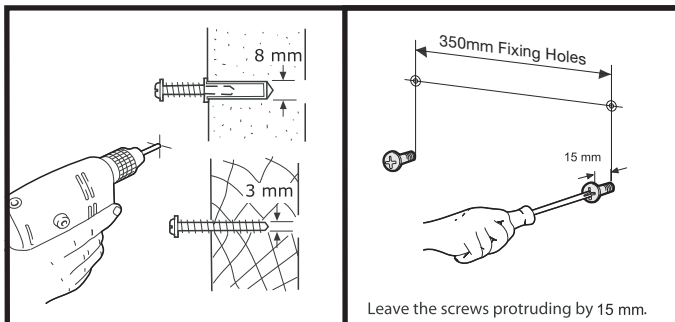
Note: The inlet valve can be changed from right to left hand side. Right side position supplied.

Note: Based on installation with Solus LL Standard height pan, if cistern is to be installed with alternate pan, refer to manufacturers dimensions and make adjustments accordingly.

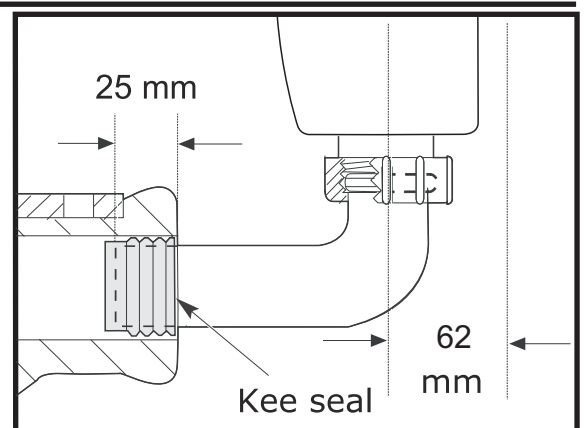
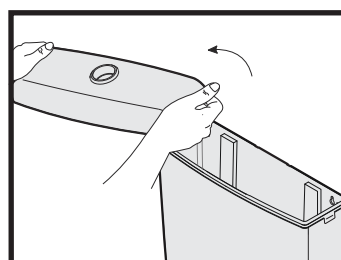
Installation

Note: Flush pipe and fittings are packed inside cistern.

1. Check that the pan is installed within dimensional tolerances. Mark out the fixing holes for the cistern.
2. In masonry, drill 8mm diameter holes and insert the plugs provided. In timber, drill 3mm diameter pilot holes.

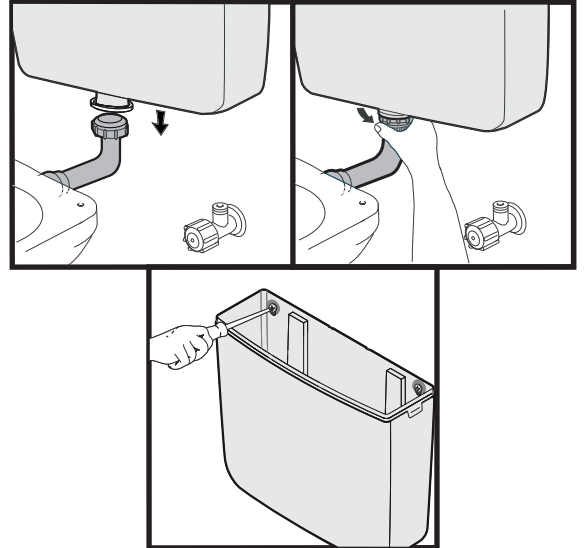


3. Cut the flush pipe to required length within dimensional tolerances. Lubricate the kee seal with soap and water and fit the pipe into the pan. Fit the coupling nut and seal onto the flush pipe.
4. Depress tabs on either side of cistern and lifting upwards to remove cistern lid.

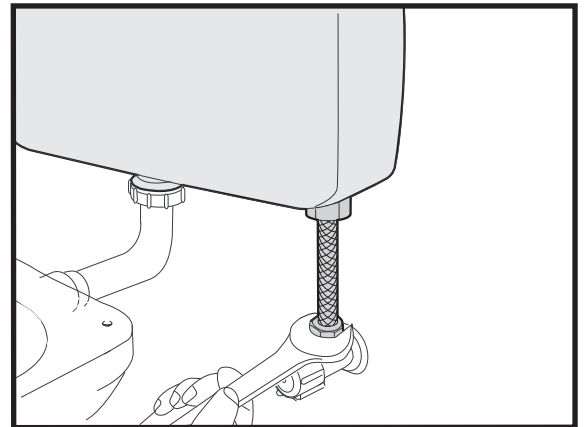
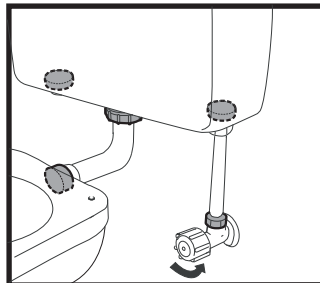


Solus Link Plastic Cistern (4*)

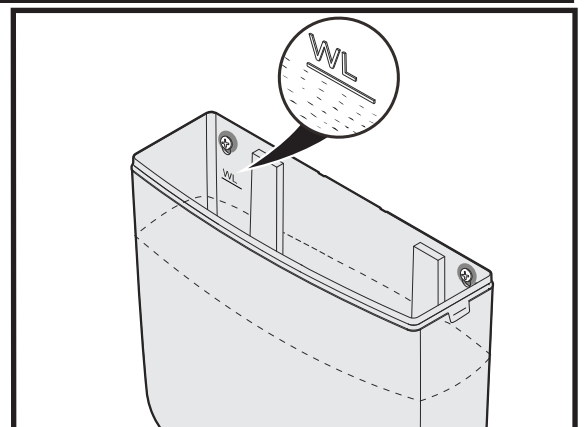
5. Lower the cistern onto the pipe and hook it over the mounting screws.
6. Hand tighten coupling nut.
7. Ensure cistern is level as mounting screws are secured.



8. Fit the water supply pipe using approved fittings.
9. Turn on the water. Operate the cistern and check for leaks.

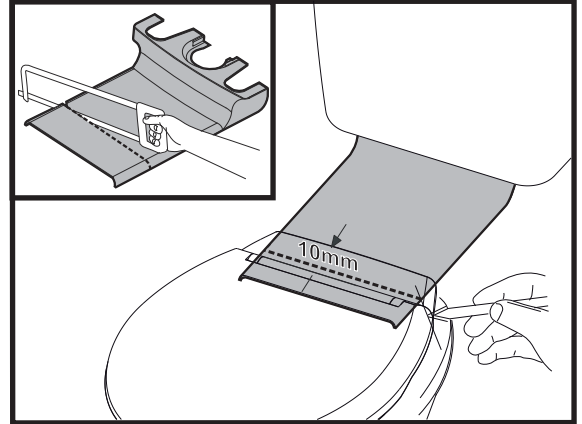
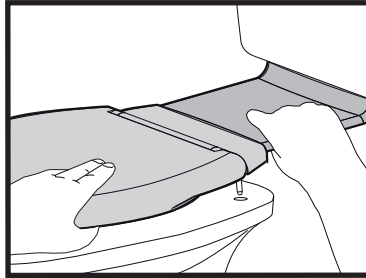


10. Water level marking (Factory setting) 4.5/3L. Ensure water level fills to marked water level line.

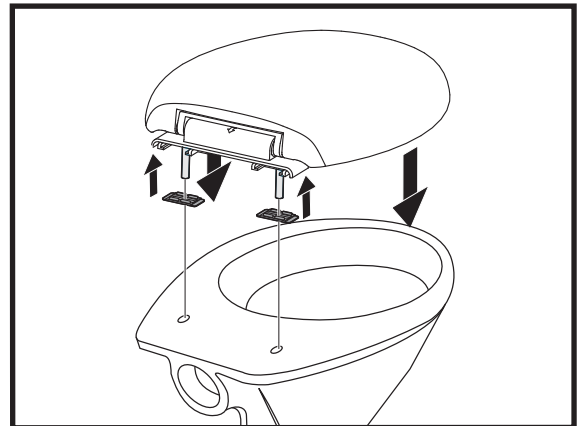
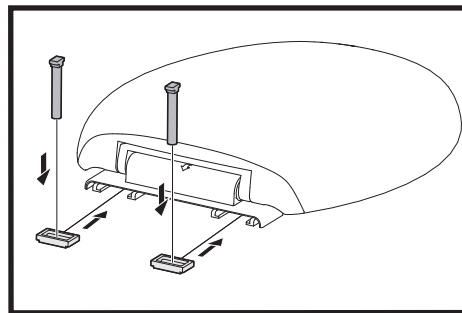


Solus Link Plastic Cistern (4*)

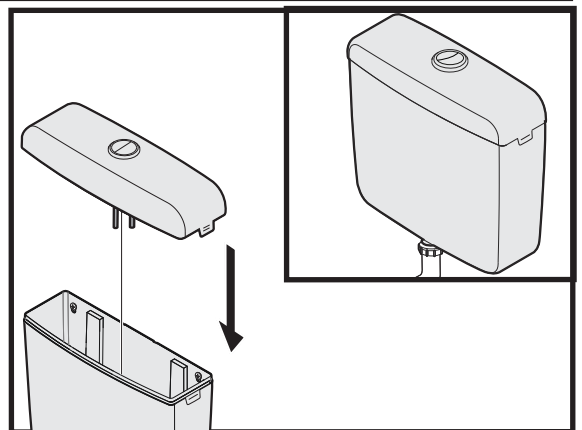
11. Push the link plate into position for marking.
12. Position the seat and mark the link plate as shown.
13. Cut the excess length of link along the guide recess provided at the bottom of link.
14. Push the link plate back into place and seat bolts into pan holes. At same time, locate and push flush pipe into pan outlet.



15. Fit plastic bolts and slide nuts onto seat.
16. Position seat onto pan and align correctly. Then fully tighten bolts to lock seat and link piece into position.



17. Carefully refit the lid, then test flush operation.



Care Details

We recommend the use of soapy water or approved cleaners. This product should not be cleaned with abrasive materials. Damage caused by any improper treatment is not covered by the product warranty. Refer to Warranty Conditions

Plumbers, please ensure a copy of the installation instruction is left with the end user for future reference.