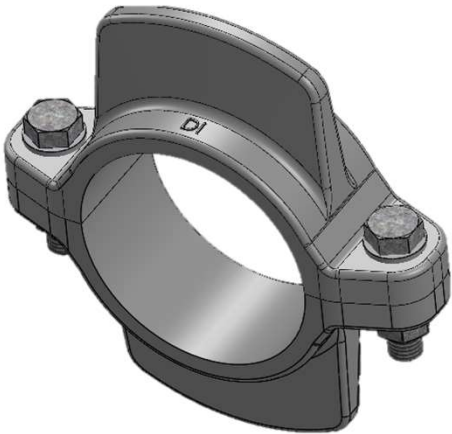


DIMAX DUCTILE IRON UNFITTED PUDDLE / WEEP FLANGE

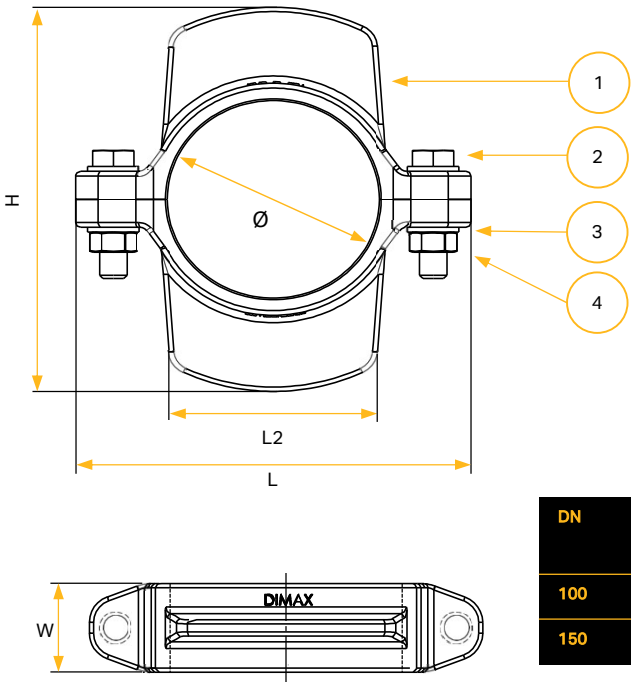
Dimensional Overview and Installation Guidelines



RANGE OVERVIEW

DIMAX Puddle / Weep Flanges are made from Ductile Iron and come complete with galvanised mild steel fasteners.
**Stainless Steel fasteners available on request.*

Normal application: To provide a water barrier when a pipe passes through a concrete wall of a water retaining structure. To act as a thrust flange when enclosed within a concrete wall, for example, a valve pit.



No	Description Material / Standard
1	Thrust Flange Casting Ductile Iron
2	M16 x 70 Hex Head Bolt Galvanised Mild Steel
3	M16 Washer Galvanised Mild Steel
4	M16 Nut Galvanised Mild Steel

DN	Ø	L mm	L2 mm	H mm	W mm	Ultimate Shear Force KN	Weight kg
100	122	230	120	240	65	116	5.5
150	177	290	160	320	65	171	9

The ultimate shear force is a theoretical value which assumes the mode of failure to be caused by shear of the circumferential pipe wall groove. The flange is assumed to remain bolted together and the shear area is calculated over a 45° circumferential plane with its root at the base of the pipe groove. Mating dimensions from AS/NZS 2280 are adopted.

Notes

It is recommended that puddle flanges are factory fitted onto pipes. AS/NZS 2280 calls for a machine groove to be cut into the outside surface of the pipe and the puddle flange machined accordingly to provide a nominal interference fit. An epoxy resin is utilised to prevent seepage along the outside surface of the pipe.

DISCLAIMER

All Reece trademarks and logos are owned by Reece Group Pty Ltd. All other brand and product names are trademarks or registered marks of their respective owners and displayed by agreement. Because we are continuously improving our products and services, Reece reserves the right to change specifications without prior notice.

Call 1800 032 566 or visit www.reece.com.au/storefinder for your nearest branch.

DIMAX DUCTILE IRON UNFITTED PUDDLE / WEEP FLANGE



Dimensional Overview and Installation Guidelines

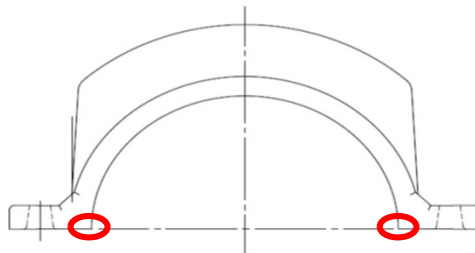
OVERVIEW

The Unfitted Weep Flange procedure documents the 'best practice' installation methodology for fitting the weep flange assemblies where required for non-factory fitted applications.

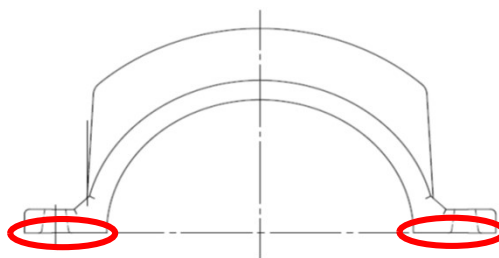
This Procedure is applicable to all unfitted weep flange assemblies where there is a need for non-factory fitted applications.

PROCEDURE

1. Disassemble unfitted weep flange assembly.
2. Where factory applied coating on the pipe is Fusion Bonded Polymeric or 2 part Epoxy coated, the coating will need to be removed at the desired weep flange location.
3. Position 1 half onto pipe location.
 - a. If weep flange half is tight on the pipe use sledge hammer to force weep flange onto pipe, if too tight the follow 2 options are available;
 - i. Light grind diameter of pipe at location of weep flange, gradually checking fit to ensure weep flange is not loose on the pipe when bolted together.
 - ii. Grind the inside edge of the weep flange, as shown below to allow for better fitment onto the pipe.



- b. Repeat step 2 for other half of the assembly.
 - c. For best fit 2mm approx. gap between mating flanges prior to tightening of the bolts.
4. If weep flange is loose on the pipe, when initially fitted, lightly grind mating flanges, highlighted below, on both weep flange halves until desired gap is achieved, ie 2mm.



5. Once desired fitment is complete remove each weep flange half, apply a thin layer of 2 part epoxy adhesive, i.e. araldite, to inside contact surfaces of both weep flange halves and refit to pipe.
6. Fit fasteners and tighten.

SAFETY

1. PERSONAL PROTECTIVE EQUIPMENT
 - Ensure that Site Personal Protective Equipment requirements are adhered to.
2. WORK AREA
 - Ensure that working area is clear of obstructions before commencing work.

ENQUIRIES AND FEEDBACK

For all enquiries and concerns, please contact local Reece Civil or Viadux representative.