



Scan to  
start your  
iW journey!

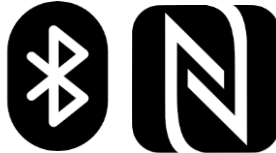


Available on the  
App Store

Available on the  
Google play



APPLICA



## Scan the QR Code

### 1. Download the APP

*Available in the APP & Play Store from the landing page*

### 2. YouTube Tutorials

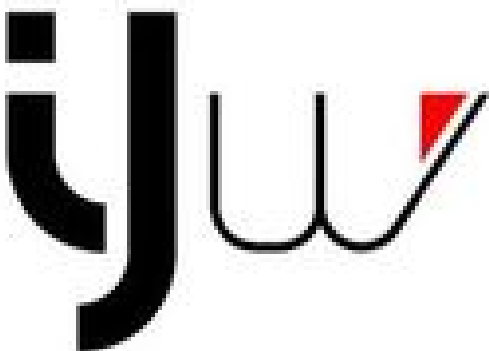
*Quick condensed videos on connectivity, setup, wiring & more!...*

### 3. Configuration Wizard

*Walk through the guided Wizard configuration setup to get started including helpful wiring diagrams*

### 2. Live Display

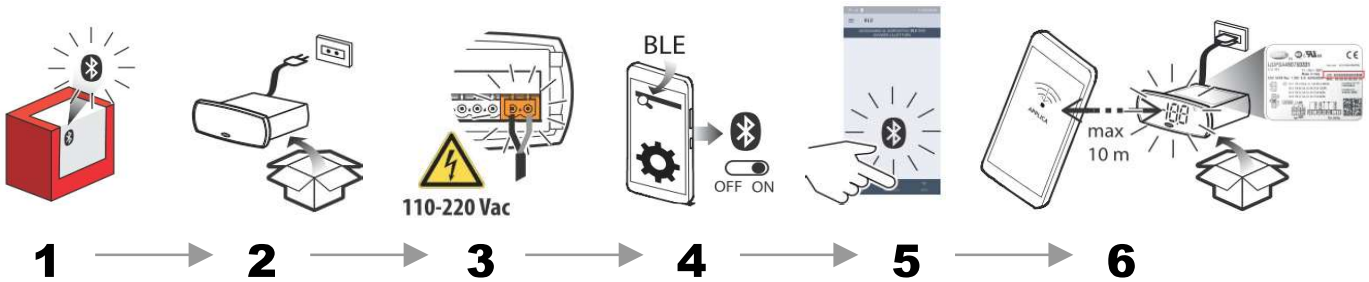
*Or skip the Wizard to land directly in the live home screen + upload a saved or shared configuration profile*



**Note: This Demo will automatically perform a factory reset after 15mins of inactivity**



Please scan the QR code and open the Carel IJW info page. Select Applica mobile app to download Carel Applica from App Store or Google Play. The Carel IJW info link also includes the latest IJW documentation and video tutorials. In case you already installed Carel Applica on your mobile device please start with the 6 easy steps below:



1. Ensure the IJW controller features Bluetooth connectivity, indicated by the Bluetooth icon on the box.
2. Unpack the IJW controller and connect 230V power supply to terminal **L** and **N**.
3. If it's safe to do, then turn on the IJW controller.
4. Please ensure the Bluetooth is turned on in your mobile.
5. Start the Carel Applica and select the connection option at the bottom of the app screen → Bluetooth
6. Carel Applica will scan for available devices. Please ensure you're in close proximity of the IJW controller of less than 10m and the IJW controller will be displayed in Carel Applica with the serial identification number printed on the IJW controller label.

Once the IJW controller is displayed, select the IJW from the list and Carel Applica will connect to the controller. While the IJW controller start's flashing "bLE" in the display. Carel Applica will now ask for access authorisation, please enter password: **22**

