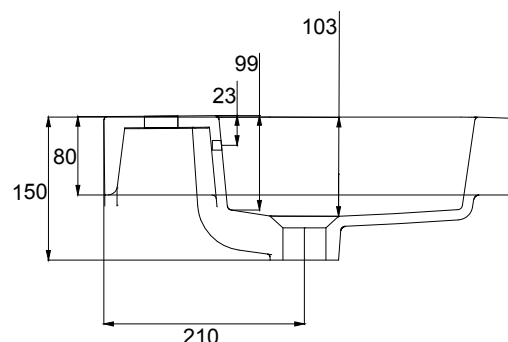
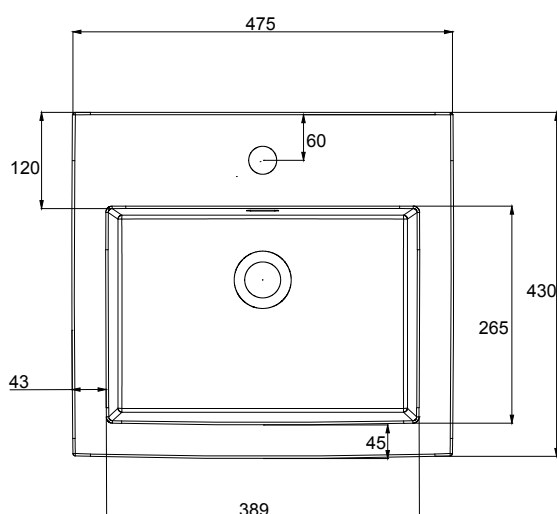


KADO

LUX SEMI INSET BASIN



Dimensions are nominal measurements only.

SPECIFICATIONS

Recommended use	Domestic, Hotel and Commercial
Material	Fine fire clay
Colour	White
Weight	11 Kg
Capacity	7 Litres
Tap hole availability	1 or 3 tap holes
Integrated overflow	Yes
Plug and waste	32/40mm overflow waste (not supplied)
Fixing	Sealed to countertop with sanitary grade silicone
Additional Information	Cut out template supplied



To see the complete KADO range go to www.reece.com.au/bathrooms

CLEANING RECOMMENDATIONS

We recommend the use of soapy water or approved cleaners.

This product should not be cleaned with abrasive materials.

Damage caused by any improper treatment is not covered by the product warranty - refer to Warranty Conditions.

INSTALLATION INSTRUCTIONS

1. Position basin onto bench top and mark off for semi inset installation.
2. Cut hole in bench top to suit waste and tapware.
3. Fit selected waste to basin. Ensure waste is sealed top and bottom.
4. Apply waterproof sealant (not supplied) to the rim of the basin and to the bench top.
5. Fit basin onto the bench top and press firmly all around to achieve good seal.
6. Remove surplus sealant.