

Villa Solid Surface Basin & Bath Installation

INSTALLATION NOTES

Prior to installation, it is important to unpack and inspect your products to ensure no damage has occurred in transit and that the product is correct.

If damage has occurred, or a visible defect exists, do not proceed with installation and contact your supplier immediately.

No claims for damages / defects will be recognised after installation.

Avoid damage to unit by storing it in a safe place until installation is required.

Make sure the product is sufficiently protected throughout installation process, damage due to negligence and improper installation methods are not covered by warranty.

The empty weight of the Villa items are:

	COUNTER-TOP BASINS					SEMI-INSET BASINS		BATHS	
	380 THIN EDGE ROUND BASIN	485 THIN EDGE OVAL BASIN	430 ROUND BASIN	550 OVAL BASIN	600 OVAL BASIN	380 ROUND BASIN	485 OVAL BASIN	1500 BATH	1725 BATH
WEIGHT	5kg	8kg	8kg	12kg	16kg	5kg	9kg	155kg	200kg

Correct handling techniques must be used for transportation, movement and installation of the Villa products.

Installation procedure is to align with standard building regulations set by local authorities and is to be carried out by a qualified tradesperson/s.

Instructions only outline installation of supplied components, waste connection procedure to be worked out by qualified tradesperson/s.



Note: Drawings are only indicative

Plumbers, please ensure a copy of the installation instructions is left with the end user for future reference

Published 24/11/2022

Villa Solid Surface Basin & Bath Installation

Basin Installation

NO claims for damages / defects will be recognised after installation.

Prior to installation it is important to unpack and inspect your products to ensure no damage has occurred in transit and that the product IS CORRECT.

If damage has occurred, or a visible defect exists, do not proceed with installation and contact your supplier IMMEDIATELY.

Step 1. Cross-check dimensions supplied in **Figure 3**.

Step 2. Prepare bench top surface and make sure it is clean and dry. Using template provided ensure cut out suits basin. See **Figure 1**.

Step 3. Apply a neat generous bead of adhesive silicone sealant around the flat surface under the basin. See **Figure 2**.

Step 4. Immediately place the basin on to the cabinet the right way up and position over cut-out.

Step 5. Once plumbing and trap are in position, place waste through the basin. With seals in place, hand-tighten lock nut to secure waste in basin. See **Figure 4**.

Step 6. Clean excess silicone around base of basin and allow to dry, following silicone instructions.

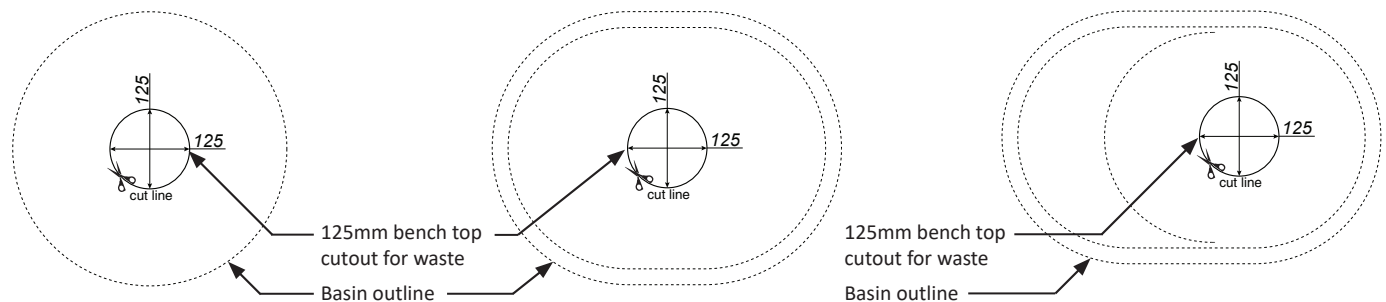
Note: Bottle trap is not included with basin

Figure 1.

VILLA 380/430 COUNTER BASINS

VILLA 485/550 COUNTER BASINS

VILLA 600 COUNTER BASIN



VILLA 380 SEMI INSET BASIN

VILLA 485 SEMI INSET BASIN

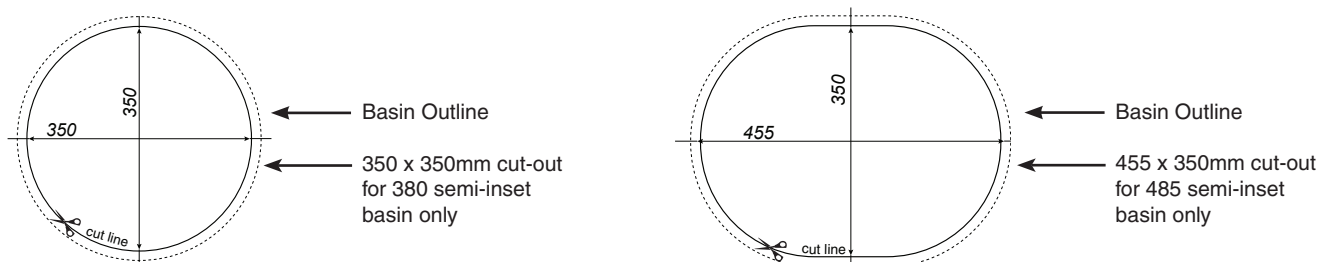
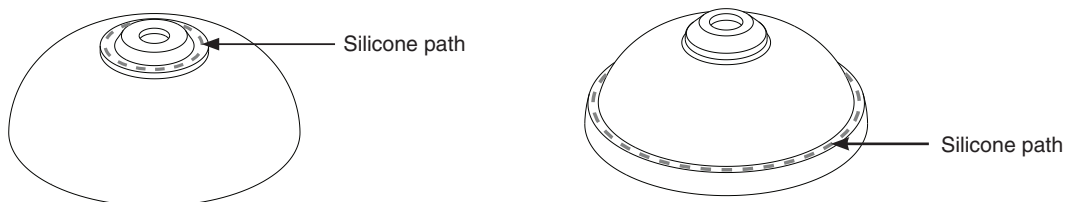


Figure 2.

Above Counter Basin

Semi Inset Basin



Note: Drawings are only indicative

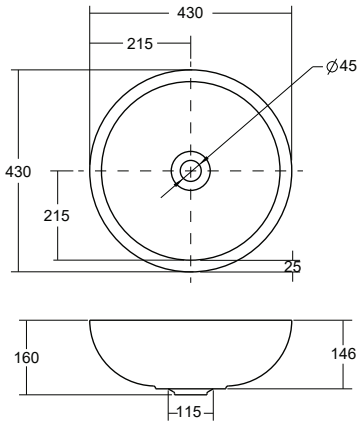
Plumbers, please ensure a copy of the installation instructions is left with the end user for future reference

Villa Solid Surface Basin & Bath Installation

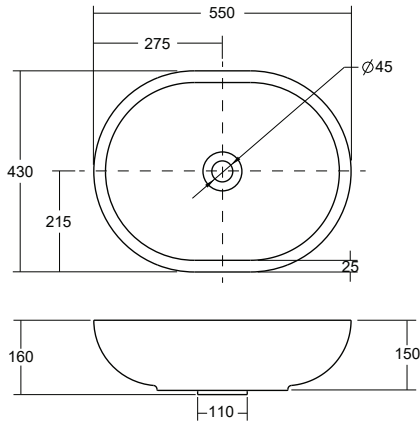
Basin Installation

Figure 3.

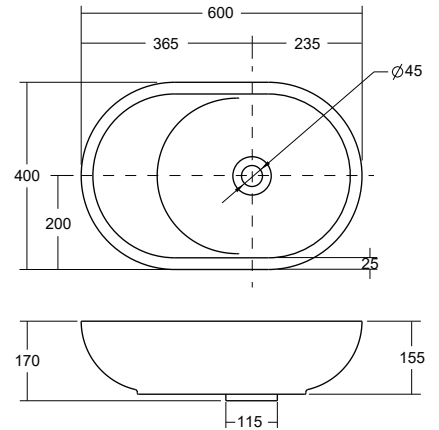
VILLA 430 COUNTER BASIN



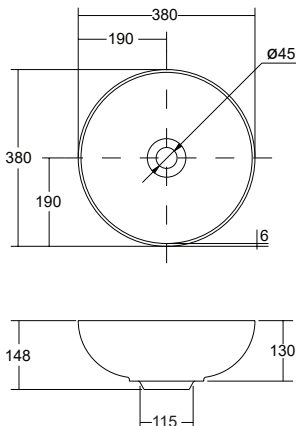
VILLA 550 COUNTER BASIN



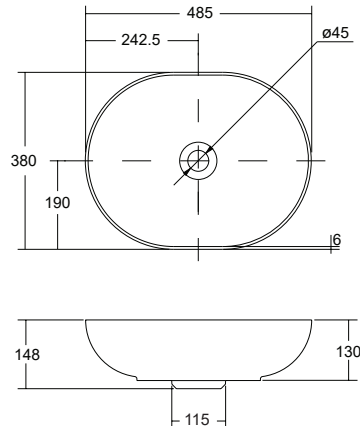
VILLA 600 COUNTER BASIN



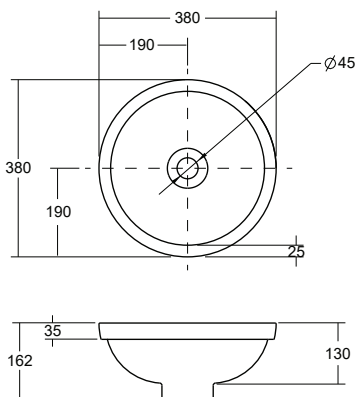
VILLA 380 COUNTER BASIN
- THIN EDGE



VILLA 485 COUNTER BASIN
- THIN EDGE



VILLA 380 SEMI-INSET BASIN



VILLA 485 SEMI-INSET BASIN

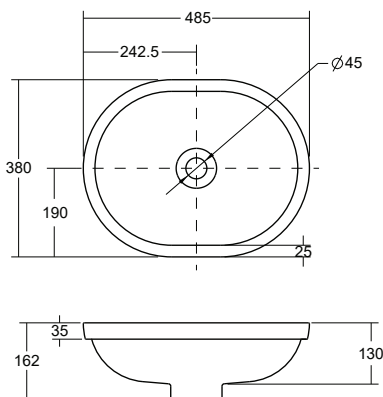
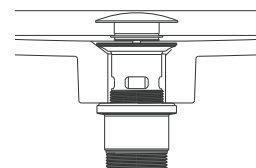
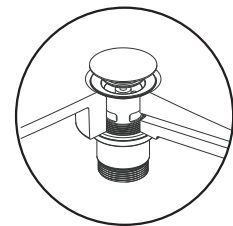
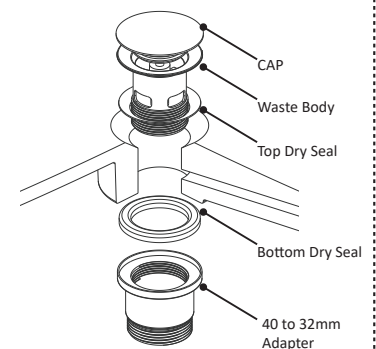


Figure 4.

*Pop up plug and waste is indicative



Note: Drawings are only indicative

Plumbers, please ensure a copy of the installation instructions is left with the end user for future reference

Villa Solid Surface Basin & Bath Installation

Bath Installation

Step 1. Preparation of intended installation area is crucial. Ensure the floor is level, free of debris and free of moisture prior to installation.

Step 2. Place bath in final location for installation and mark bath footprint and bath waste point on floor (carefully use an erasable product)

- Cross-check dimensions supplied in **Figure 2a & Figure 2b**.

Step 3. Remove excess floor material around waste outlet to allow for appropriate plumbing fixtures **Figure 1**.

- Plumbing fixtures are not included. Qualified tradesperson to select correct components for installation.
- Allow for analogous installation principles for concrete and timber/chipboard floors, ground floor or above.

Step 4. Place bath onto timber blocks at the head and base of the unit, positioning it over prepared waste point **Figure 5**.

Step 5. Once plumbing and trap are in position, place waste through the bath and hand-tighten lock nut to secure waste in bath. See **Figure 3**.

- Ensure as you tighten the waste, the plug is centred in the waste hole
- Overflow slot on waste assembly must align with bath overflow for correct overflow drainage. See **Figure 4**.
- We suggest using a SMART SEAL for assembly of the waste to the waste point, ensuring a water tight seal.

Step 6. Leak test bath and installed components prior to lowering bath off timber blocks to ensure water-tight seals.

- Allow 24hrs post-installation setting time before next allocated trade to carry out works around the bath.

Step 7. Carefully remove blocks underneath the bath and lower the bath onto floor surface.

- Re-check positioning of bath from original set-out.

Step 8. Use bathroom wet area grade silicone and seal the perimeter of the bath between the base and floor surface.

- Make sure any excess silicone is cleaned away immediately. Allow silicone sealant to cure as per instructions specified on the product.

IMPORTANT NOTE:

- Water test the bath upon completion of installation process for leaks and draining. No claims can be made once the bath has been sealed, enclosed and/or tiled.

Note: Drawings are only indicative

Plumbers, please ensure a copy of the installation instructions is left with the end user for future reference

Villa Solid Surface Basin & Bath Installation

Bath Installation

Figure 1.

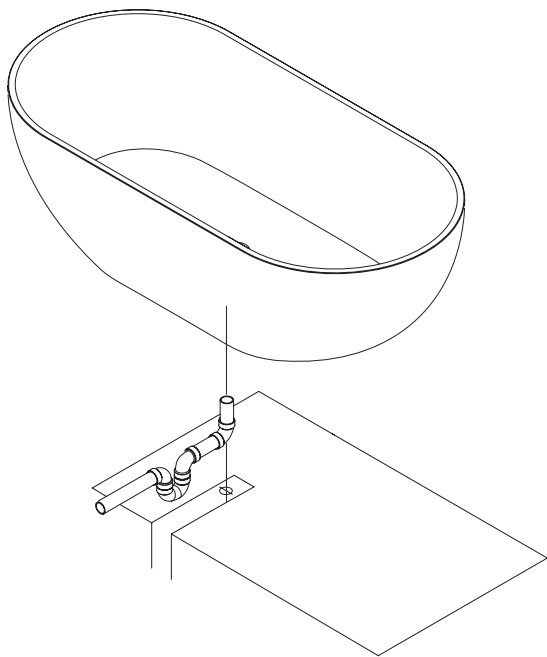


Figure 2a.

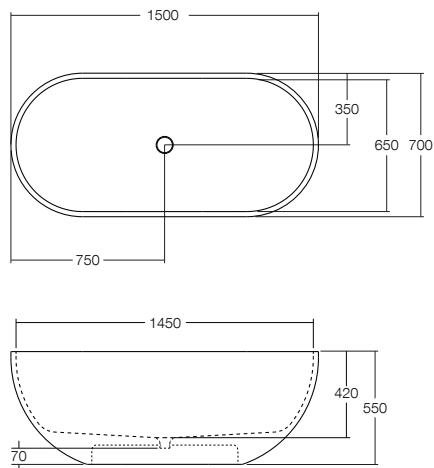


Figure 2b.

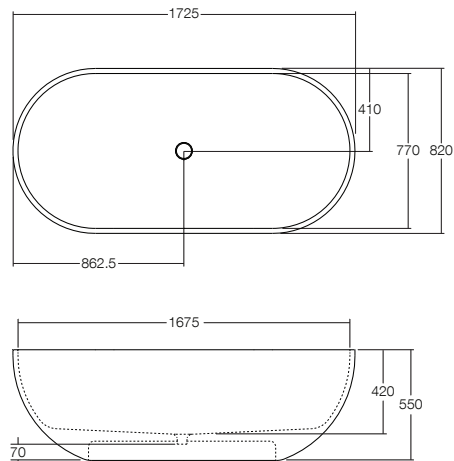


Figure 3.

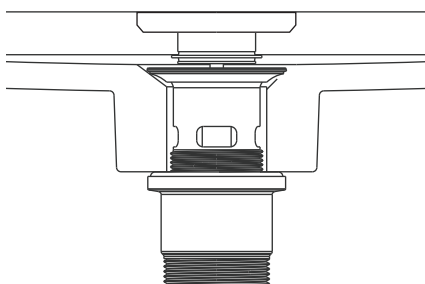


Figure 4.

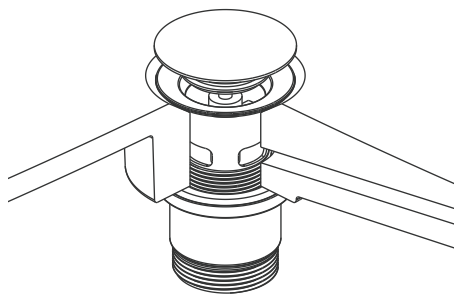
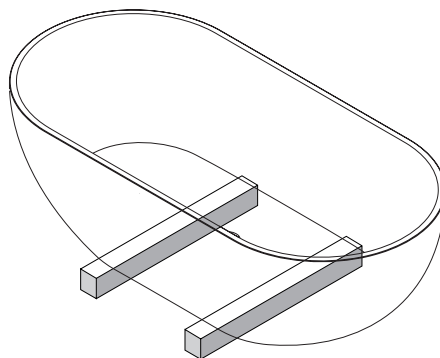


Figure 5.



Note: Drawings are only indicative

Plumbers, please ensure a copy of the installation instructions is left with the end user for future reference

Villa Solid Surface Basin & Bath Installation

DETAILED CLEANING INSTRUCTIONS

Always start your cleaning routine with the basic clean and move to a deep clean if necessary. Regular cleaning will assist to keep your solid surface looking fantastic and reduce wear and dirt build up.

To maintain a uniform appearance, it is best to give the entire surface of the product the same clean/sand. Always finish by wiping surface clean of all detergents and for best results dry with a soft clean cloth.

Never use sharp products such as steel wool or aggressive, commercial grade / strong cleaners or chemicals (eg. acetone, trichloroethylene, acids, and caustic soda) as these may damage and/or scratch the surface.

Basic Clean: Spills should be cleaned promptly. Clean with a mild detergent or soapy water and a soft cloth, sponge or non-scratch scourer*.

Deep Clean: For a deep clean and to remove cosmetics, ink and other stubborn marks or staining, use a diluted mild abrasive cleaner* with a soft cloth or non-scratch scourer* in circular motions.

Intense clean /repair: For extreme marks and light scratches a light buff in circular motions using a fine grade sand/ glass paper will restore the surface. A heavier grade of sandpaper will scratch the surface however these scratches can be removed by then using a fine grade paper. Avoid applying excessive pressure or clean/rub the same area for a prolonged time unless repairing a scratch or damage.

* Always test 'non-scratch' and 'mild abrasive' products in a non conspicuous area first to ensure suitability as brands can differ.



Regular cleaning

Use a soft cloth or sponge and mild detergent for regular cleaning



Intense clean/repair

Use finest grade sand/glass paper applying only light pressure to restore surface



Do not use heavy duty detergents, harsh chemicals, rough scourers or steel wool

Note: Drawings are only indicative

Plumbers, please ensure a copy of the installation instructions is left with the end user for future reference