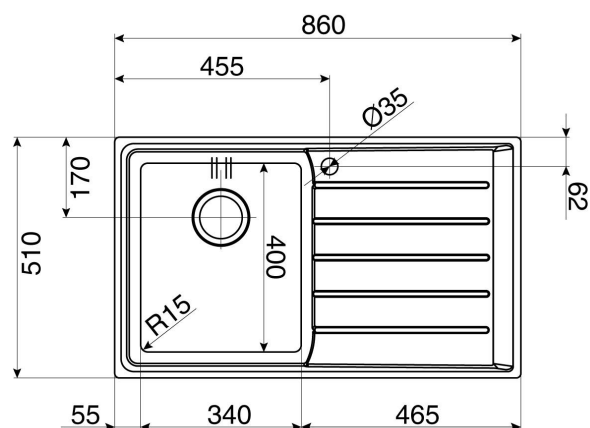


# FRANKE

## NEPTUNE PLUS INSET SINK - NPX 611



### FEATURES

<b>Model</b>	NPX 611 LHD or NPX 611 RHD
<b>Bowl configuration</b>	Sink is available with either left hand drainer or right hand drainer.
<b>Bowls</b>	Fabricated bowls with R15 corners and rear wastes
<b>Finish</b>	Satin
<b>Fixing</b>	Integrated sealing strip and clipping system

### SPECIFICATIONS

<b>Recommended use</b>	Domestic
<b>Material</b>	Type 304, 18/10 stainless steel, 1.0mm thick
<b>Formation</b>	Welded, two pieces
<b>Tap Holes</b>	1 tap hole only, Ø35mm
<b>Dimensions</b>	860 x 510mm
<b>Bowl Size</b>	340 x 400 x 220mm / 27 Litres capacity
<b>Cut Out</b>	840 x 490mm, cr = 20mm
<b>Cabinet Size</b>	600mm
<b>Waste Outlet</b>	90mm
<b>Features</b>	Sound deadening pads, overflow
<b>Accessories</b>	Please refer to website for more information
<b>Models available</b>	NPX 611 Single bowl and drainer 860mm NPX 620 Double bowl 860mm NPX 621 Double bowl and drainer 1160 mm

To see the complete Franke range go to [www.reece.com.au/bathrooms](http://www.reece.com.au/bathrooms)

### CLEANING RECOMMENDATIONS

This kitchen product should not be cleaned with abrasive materials eg. steel wool/scourers. Do not use any corrosive or abrasive cleaning agents containing acids or scouring agents. Bleaches can also discolour products and therefore should not be used. Damage caused by any improper treatment is not covered by the product warranty- refer to Warranty Conditions.

Disclaimer: Products in this specification manual must by regulation be installed by licensed and registered trade people. The manufacturer/distributor reserves the right to vary specifications or delete models from their range without prior notification. Dimensions are nominal measurements only. Dimensions and set-outs listed are correct at time of publication however the manufacturer/distributor takes no responsibility for printing errors.

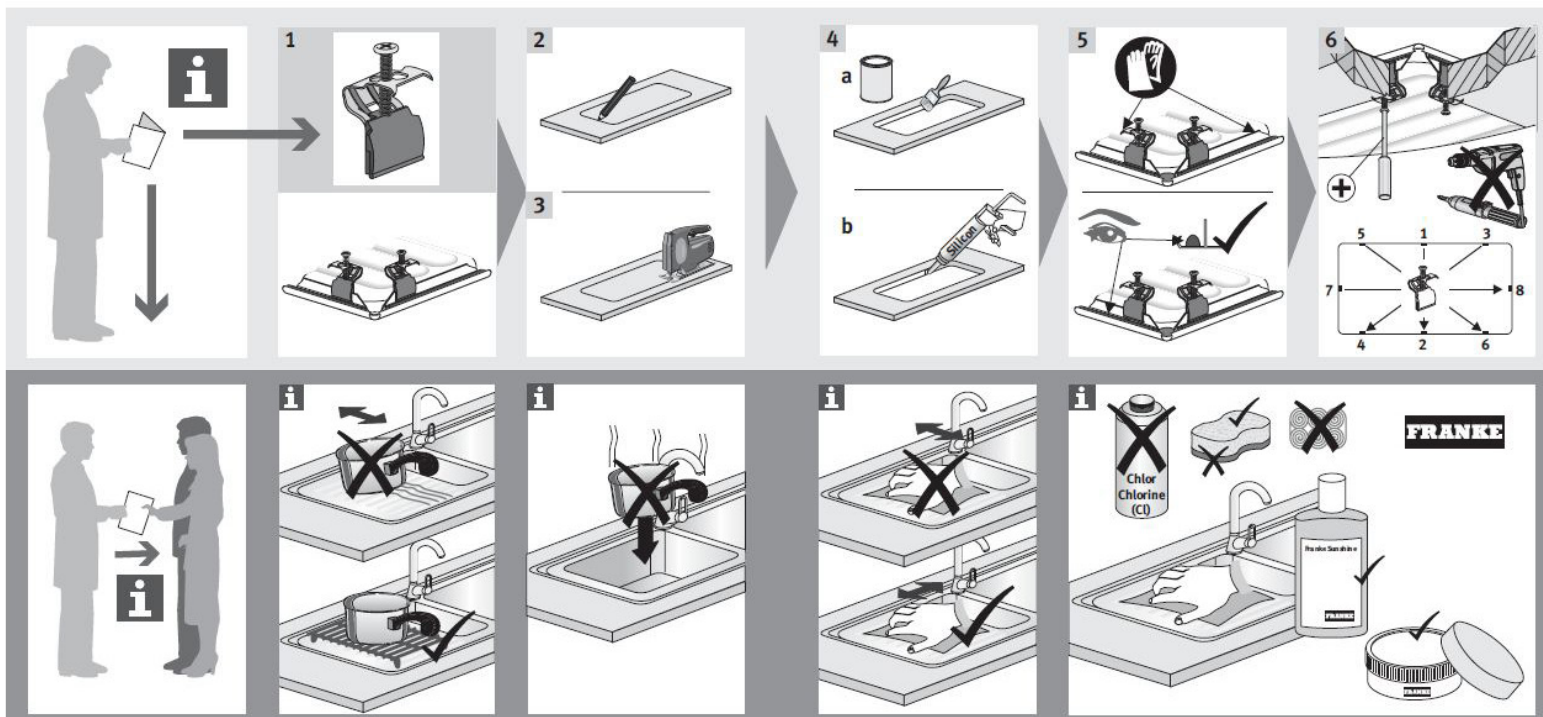
Tech Page Version 1

**FRANKE**

**reece**

# FRANKE NEPTUNE PLUS INSET SINK - NPX 611

## INSTALLATION INSTRUCTIONS



Plumbers, please ensure a copy of the installation instructions is left with the end user for future reference

