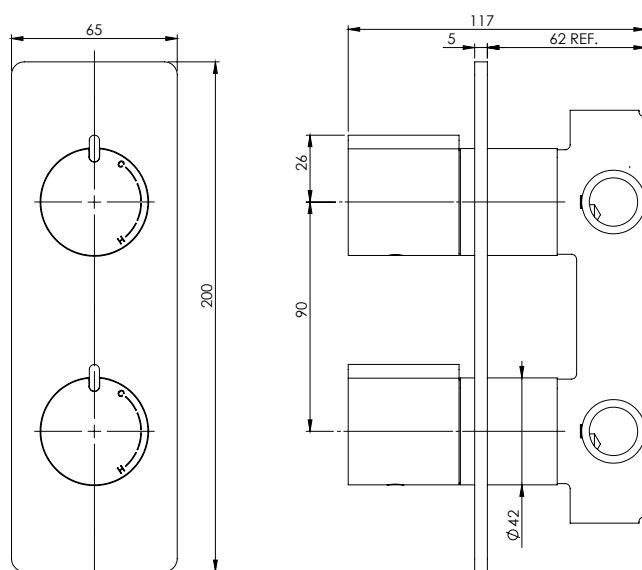


# MILLI AXON

## TWIN SHOWER / WALL MIXER



### SPECIFICATIONS

<b>Recommended Use</b>	Domestic, hotel and commercial
<b>Finish Available</b>	Chrome Handle with Chrome B/P Chrome/Black Handle with Chrome B/P Chrome/Black Handle with Black B/P
<b>Pressure Rating</b>	Maximum continuous operating pressure 500 kPa. Note: For best performance and longer life we recommend 150-500 kPa.
<b>Temperature Rating</b>	Maximum continuous working temperature 75°
<b>Suitable Hot Water</b>	Storage Tank: Yes Continuous Flow: Refer to manufacturer of continuous hot water systems Gravity Feed: No
<b>Standards</b>	AS/NZS 3718



To see the complete Milli range go to [www.reece.com.au/bathrooms](http://www.reece.com.au/bathrooms)

### CLEANING RECOMMENDATIONS


This product should not be cleaned with abrasive materials eg. steel wool/scourers. Damage caused by any improper treatment is not covered by the product warranty - refer to Warranty Conditions.

# MILLI AXON TWIN SHOWER / WALL MIXER

## INSTALLATION INSTRUCTIONS


MILLI AXON TWIN SHOWER MIXER INSTALLATION INSTRUCTIONS

### WATER SUPPLY REQUIREMENTS



**150 KPa Min.  
550 KPa Max.**

**Recommended Working Pressure**



**75°**

**Maximum hot water temperature**

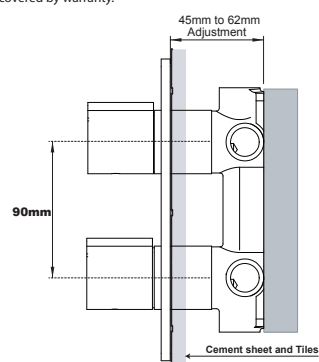
**Note:**

- If the pressure exceeds or is likely to exceed 550kpa, an approved pressure limiting device must be installed.
- Flush out all pipe work prior to installation.
- If the water temperature exceeds 75°C, an approved tempering valve must be fitted.
- Installation should comply with Australian standard AS3500.1 or relevant local authority requirements.

Failure to comply with the above may void all warranties.

**Maintenance and Care**

- Chrome plated surfaces should be cleaned with mild liquid detergent or soap and water.
- **Do not** use cream cleaners or citrus based cleaning products, as they are abrasive.
- Use of unsuitable cleaning agents may damage the surface. Any damage caused in this way will not be covered by warranty.



45mm to 62mm Adjustment

90mm

Cement sheet and Tiles

**1**

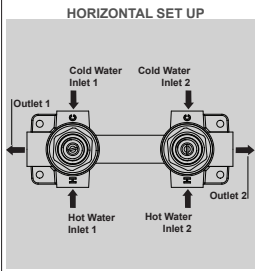
Determine preferred set up. Fasten screws to secure the shower mixer assembly in place.

Attach water supplies and water outlets.

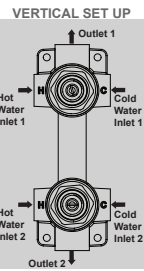
**TEST AND CHECK FOR LEAKS**

Do not remove the protective cover until final fit-off.

**HORIZONTAL SET UP**



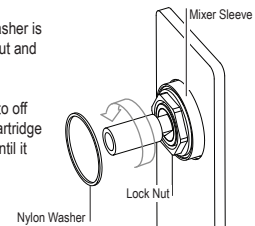
**VERTICAL SET UP**



**3**

Ensure that the nylon washer is fitted between the lock nut and the mixer sleeve.

Set the mixer assembly to off position by turning the cartridge spindle Anti-Clockwise until it stops.



Nylon Washer

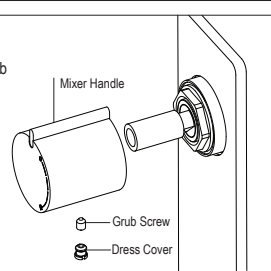
Lock Nut

Mixer Sleeve

**4**

Push on the mixer handle, fasten the grub screw firmly.

Push on the dress cover.



Mixer Handle

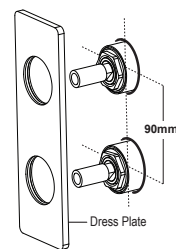
Grub Screw

Dress Cover

**2**

Create 50mm round holes 90mm apart, centre to centre, in cement sheet and tiles.

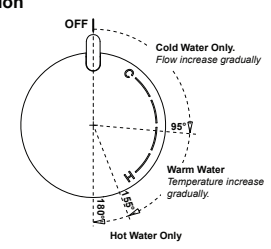
Remove the protective covers. Push the dress plate over the shower mixer assembly gently.



90mm

Dress Plate

**Mixer Operation**



OFF

Cold Water Only. Flow increase gradually

95%

Warm Water Temperature increase gradually.

100% Hot Water Only