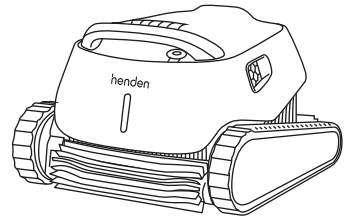




H3 Robotic Pool Cleaner

QUICK START GUIDE



Thank you for purchasing the Henden H3 Robotic Pool Cleaner.

The Henden H3 uses clever cleaning and navigation technology to keep your pool sparkling all year long. Designed for easy use and maintenance, the Henden H3 is a quality piece of pool equipment guaranteed to last.

HELPFUL HINTS

- When working, the power supply should be placed in the shade.
- Release minimal required floating cable length to ensure proper pool coverage.
- Leave excess cable rolled outside the pool.
- After each cleaning cycle wash the filter bag or cartridge. Clogged filter bags reduce scanning and cleaning efficiency.
- To remove kinks stretch the cable out completely and let it sit for at least a day in the sun.
- Once a week unplug the cable from the power supply, unwind the tangled portions of the cable, straighten it out and leave it in the sun for several hours.
- When not in use, store the pool cleaner in a shady place upside down.

SPECIFICATIONS

- Use the Robotic Pool Cleaner in the following water conditions only: Chlorine Max 4 ppm; pH 7.0-7.8; Temperature 6-34°C (43-93°F); NaCl Maximum = 5000 ppm.
- Digital Power Supply: Input: 220-240 AC Volts; 50-60 Hertz; 120 Watt; Output: <30 VDC; IP 54.
- Motor protection: IP 68
Minimum depth: 0.80m/2.6ft
Maximum depth: 5m/16.4ft

IMPORTANT
Please read carefully



CAUTIONS AND WARNINGS:

Use the originally supplied power supply only.

Do not use an extension cable in any case whatsoever.

Ensure the electrical outlet is protected by a ground fault interrupter (GFI) or an earth leakage interrupter.

Keep the power supply out of standing water.

Do not enter the pool while the Robotic Pool Cleaner is working.

Unplug the power supply before servicing.

Do not pull the Robotic Pool Cleaner from the pool using the cable.

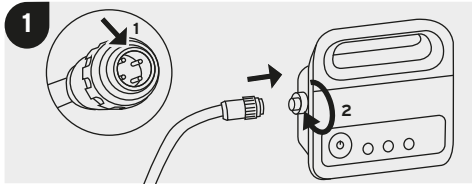
Register your product online:
www.hendenpools.com.au/productregistration



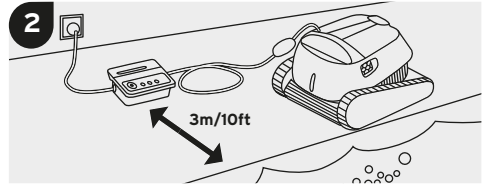
H3 OPERATION

Setup

Before using the Robotic Pool Cleaner for the first time, perform the following steps:

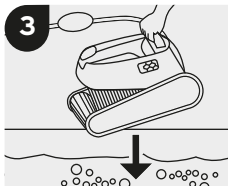


Attach the floating cable to the power supply.



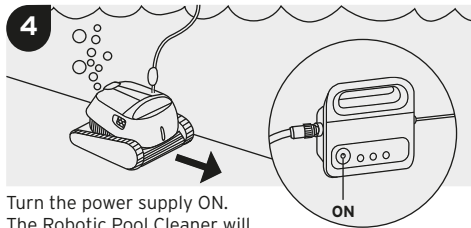
Position the power supply at least 3m/10ft away from the edge of the pool.

Into the Pool



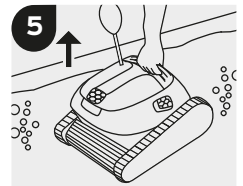
Place the Robotic Pool Cleaner into the pool. Release it and let it sink to the floor. Make sure that the floating cable is free of any obstructions.

Operation



Turn the power supply ON. The Robotic Pool Cleaner will now operate until it has reached the end of the cleaning cycle.

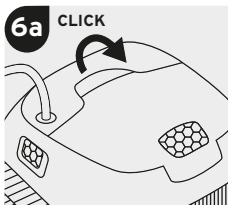
Out of the Pool



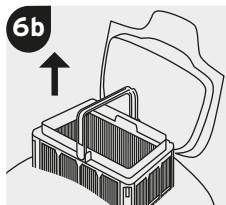
Cleaning the Basket

It is highly recommended to clean the filter basket after each cleaning cycle. Note: Don't let the ultra-fine filter cartridges dry out before cleaning.

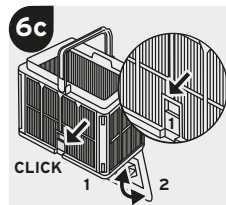
⚠ Unplug the power supply before servicing.



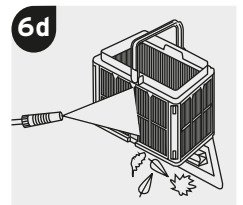
Open the filter cover.



The basket handle will automatically pop up, making it easy for you to lift the basket out.



Open the latch to release the bottom lid.



Rinse well with hose. Once debris is removed close and place back into your cleaner.

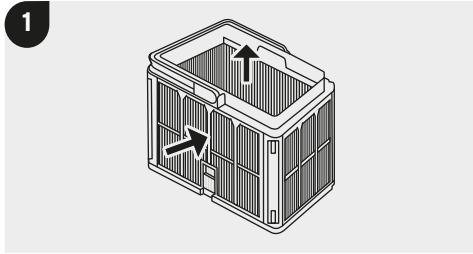
Storage

7 Coil the cable and store in a cool dry space upside down, or store in a caddy. DO NOT store the robot where it will be exposed to direct sunlight, excessive heat or to frost.

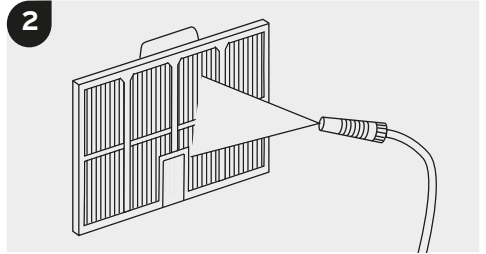
H3 MAINTENANCE

Periodic Filter Cleaning

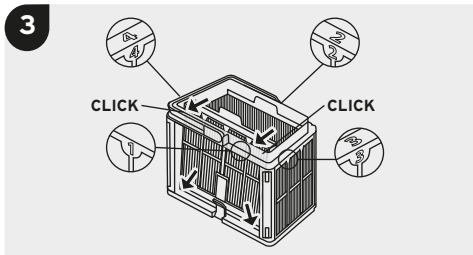
Dismantle the 4 ultra-fine filter panels on the basket according to the following steps:



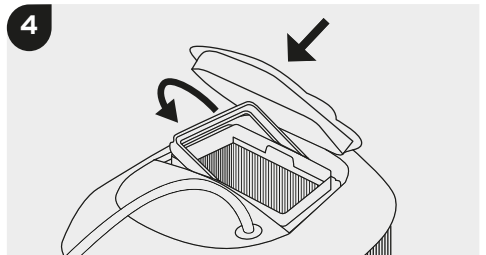
Position your thumbs on panel and apply pressure until it pops out. Repeat for all 4 panels.



Clean the filters with a hose.



Reassemble the 4 filter panels.




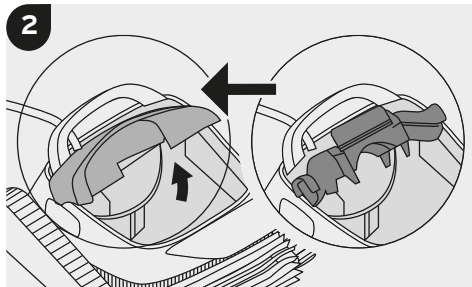
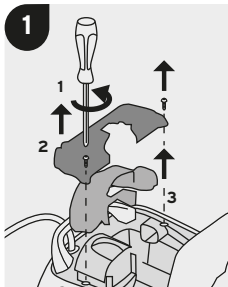
Insert the clean filter basket and close the filter cover.

Cleaning the Impeller

If you notice debris trapped in the impeller:

Clean the debris trapped in the impeller opening, according to the following steps:

 Unplug the power supply before servicing.



HENDEN H3 POWER SUPPLY

BASIC OPERATION

- Plug the Power Supply into an electrical outlet.
- Press the ON button. The LEDs will turn on and the robot will start to operate. If no programme is selected, the robot will perform a single cleaning cycle. The Power Supply will turn off automatically after 3 hours.
- You can programme the Power Supply at any time. See the relevant section below for more details on each program.

*Bluetooth is not available for this model.



WEEKLY TIMER



Your robot has a weekly timer feature that enables you to set an automatic cleaning schedule for the week ahead.

When the power supply is switched on, you can press the weekly timer button to select one of the following cleaning schedule options for the week ahead:

① One click - The robot will automatically work every day for a full cycle, that is, once a day for 7 days.

② Two clicks - The robot will automatically work every alternate day for a full cycle, that is, 4 times in a week.

③ Three clicks - The robot will automatically work every 3 days, that is, 3 times a week.

After selecting one of the above options, the robot will start to operate at the next occurrence of the programmed start time.

Note: A fourth click will cancel the cleaning schedule programme (without a visible indication).

If the robot is working in the weekly timer mode, the weekly timer button constantly blinks between cycles. At the end of the week, the power supply automatically switches off and you need to reschedule the robot.

