

mizu

Mizu Drift Sink Mixer (4*)

IMPORTANT NOTE:

Mixer must be installed to the requirements of AS/NZS 3500 by a qualified plumber. Your mixer comes to you already factory assembled and tested. We do not recommend the dismantling of any internal part of the mixer. The mixers are factory tested and sealed so as to give the best performance.

INSTALLATION INSTRUCTIONS:

1. Please flush out new pipe work prior to connecting the new mixer.
2. All mixers should be installed with isolating stop cocks (Arco).
3. This tap is suitable for high pressure applications where both hot and cold water supply pressures are at 150kPa or above.
4. Place the washer into position (15).
5. Fit the tap body into the sink hole making sure first that the flexible connectors are firmly tightened into the base of the body (22-23).
6. Do not use teflon tap on threads.
7. From underneath apply your washer (16) prior to positioning the horse shoe plate (17).
8. Lock the mixer onto the sink or benchtop by tightening the lock nut (19).

Servicing - Replacement of Cartridge

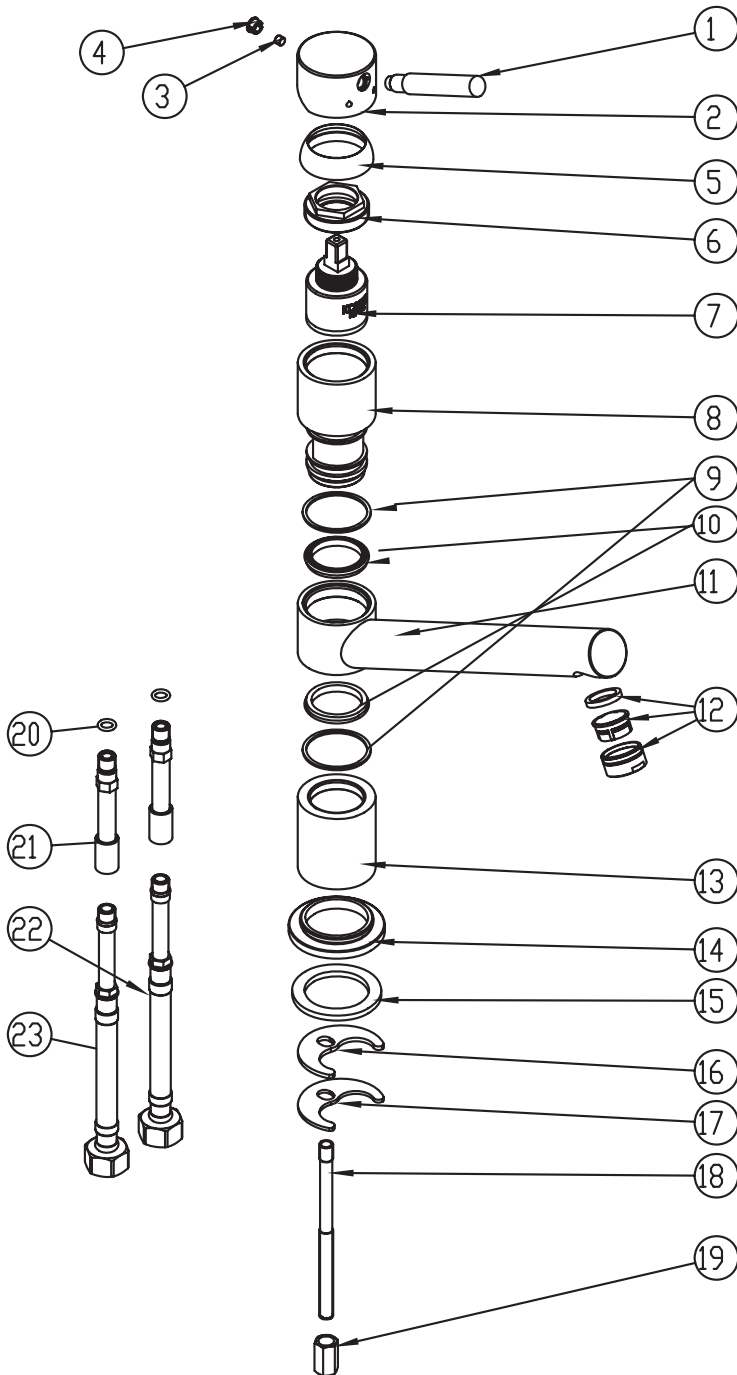
1. Remove cap (4) and unscrew the grub screw (3) using allen key.
2. Lift off handle and remove the cartridge dome, unscrew brass locking nut (6) and lift out cartridge (7).
3. Replace the cartridge (7), replace the brass locking nut (6) and replace handle. Tighten grub screw (3) and push in indicator cap (4).

mizu

Mizu Drift Sink Mixer (4*)

EXPLODED VIEW

Reference No.	Description	Reece Code
1-4	Mixer Handle Complete	Chrome - 9503175 Matte Black - 9508046
5.	Cartridge Dome	
6.	Cartridge Lock Nut	
7.	Cartridge	9503176
8, 11/13	Mixer Body	
9.	Spacer (x2)	
10.	Body O Rings (x2)	
12.	Aerator Complete	9503178
14.	Dress Ring	
15-19	Sink Mixer Fixing Kit	9503189
20-21	Tail Extensions	
22.	Flexible Hose (Hot)	9503180
23.	Flexible Hose (Cold)	9503181



Plumbers, please ensure a copy of the Installation Instructions are left with the end user for future reference